

Job Name: 23-1914 - KYTC Daviess County ID 231032
 Job Location: Owensboro, KY 42701
 Contractor: Mick-Murf Construction Inc.

Plant: 100

1/14/2026 12:52:54 PM

Tech: J. Horsley

PC: C. Goff



Structure ID: 087 (KY B 10ft)

P2 BX060060-08TS2424

CB FT REDUCER 24"X24" HOLE T/F

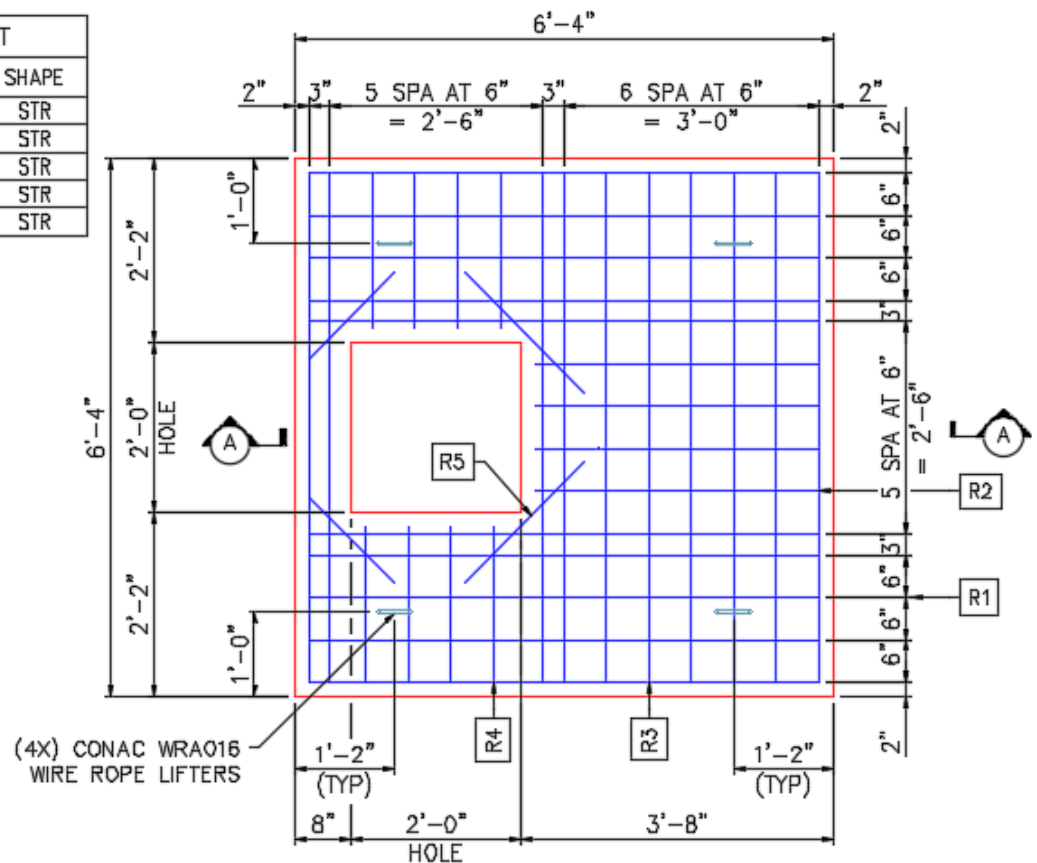
- P6) 8" x 120" - CB INLET KY B 10' TOP F/G - 9"
- P5) 24" x 120" - CB INLET KY B 10' BOTTOM LEFT T/G - 17"
- P4) 24" x 24" - FIELD ADJUSTMENT - 3"
- P3) 24" x 24" - BOX RISER 8inW F/G - 42"
- P2) 60" x 60" - CB FT REDUCER 24"X24" HOLE T/F - 8"
- P1) 60" x 60" - BOX BASE 8inW, 8inF F/n - 60"
- 1) 60" x 60" - Conseal CS-102 1.00"
- 2) 24" x 24" - Conseal CS-102 1.00"
- 2) Hole - 46
- 1) Hole - 6

- 1660 lb
- 2650 lb
- 0 lb
- 3590 lb
- 3491 lb
- 12602 lb
- 0 lb
- 0 lb
- 0 lb
- 0 lb
-
- Structure Total: 23993 lb

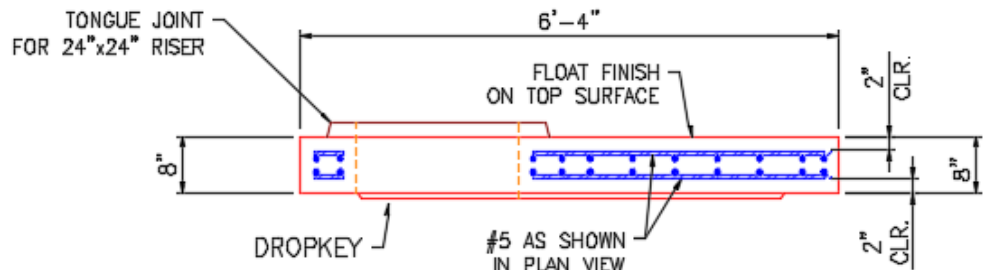
Structure Notes:

- ** KYTC STATE PROJECT **
 - 1. PER KYTC CBI TYPE B / ASTM C913 SPEC'S.
 - 2. CONCRETE = 4,000 PI AT 28 DAYS.
 - 3. NO STEPS & NO INVERT CHANNEL.
 - 5. CBI KY B F/G - BY OTHERS.
- REINFORCING PER ASTM A615 (GRADE 60).
 - TOP PHASE (As .62) #5 BARS AT 6" C.C.E.W.
 - WALLS/FLOOR (As .31) #5 BARS AT 6" C.C.E.W.

REINFORCEMENT CUT LIST				
BAR	QTY	MATERIAL	LENGTH	SHAPE
R1	16	#5 BAR	6'-0"	STR
R2	12	#5 BAR	3'-4"	STR
R3	20	#5 BAR	6'-0"	STR
R4	16	#5 BAR	1'-10"	STR
R5	4	#5 BAR	1'-6"	STR



PLAN VIEW



SECTION A-A

Coating (Int): Coating (Ext):	Seam Up: Tongue Seam Dn: Flat	Wall Thickness: 8"	Height (Ext): 8"	Weight (Net): 3491 lb Volume (Net): 0.89cu.yd
----------------------------------	----------------------------------	--------------------	------------------	--