

Job Name: 23-1914 - KYTC Daviess County ID 231032
 Job Location: Owensboro, KY 42701
 Contractor: Mick-Murf Construction Inc.

Plant: 100

Tech: J. Horsley

1/14/2026 12:52:02 PM

PC: C. Goff



Structure ID: 087 (KY B 10ft)

P1 BX6060-08BA60

BOX BASE 8inW, 8inF F/n

- P6) 8" x 120" - CB INLET KY B 10' TOP F/G - 9"
- P5) 24" x 120" - CB INLET KY B 10' BOTTOM LEFT T/G - 17"
- P4) 24" x 24" - FIELD ADJUSTMENT - 3"
- P3) 24" x 24" - BOX RISER 8inW F/G - 42"
- P2) 60" x 60" - CB FT REDUCER 24"X24" HOLE T/F - 8"
- P1) 60" x 60" - BOX BASE 8inW, 8inF F/n - 60"
- 1) 60" x 60" - Conseal CS-102 1.00"
- 2) 24" x 24" - Conseal CS-102 1.00"
- 2) Hole - 46
- 1) Hole - 6

1660 lb
 2650 lb
 0 lb
 3590 lb
 3491 lb
 12602 lb
 0 lb
 0 lb
 0 lb
 0 lb
 0 lb
 Structure Total: 23993 lb

Structure Notes:

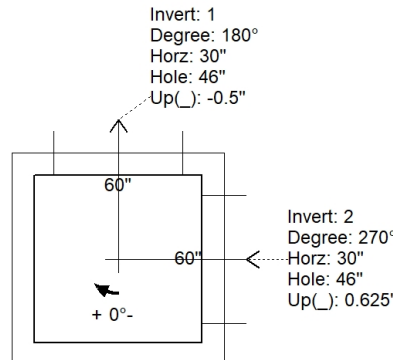
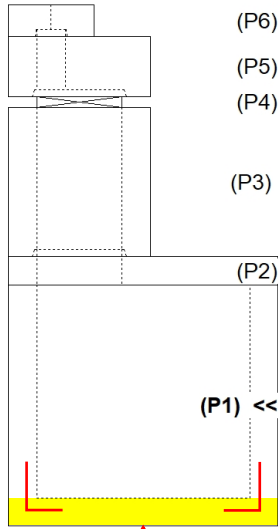
- ** KYTC STATE PROJECT **
 - 1. PER KYTC CBI TYPE B / ASTM C913 SPEC'S.
 - 2. CONCRETE = 4,000 PI AT 28 DAYS.
 - 3. NO STEPS & NO INVERT CHANNEL.
 - 5. CBI KY B F/G - BY OTHERS.
- REINFORCING PER ASTM A615 (GRADE 60).
 - TOP PHASE (As .62) #5 BARS AT 6" C.C.E.W.
 - WALLS/FLOOR (As .31) #5 BARS AT 6" C.C.E.W.

Rim: 424.69' Rim to Invert: 11.63' Slack: 0.56" Sump: 0" Step Position:

Position	Elev	Angle	Ext. (cw)	Pipe	Pipe OD	Connector	Hole	Horz Size	Up ()	Offset
Invert 1	413.06'	180°	38"	42" CMP	43"	Hole 46	46"	46"	-0.5"	0"
Invert 2	413.15'	270°	38"	42" CMP	43"	Hole 46	46"	46"	0.625"	0"
Invert 3										
Invert 4										
Invert 5										
Invert 6										
Invert 7										
Invert 8										

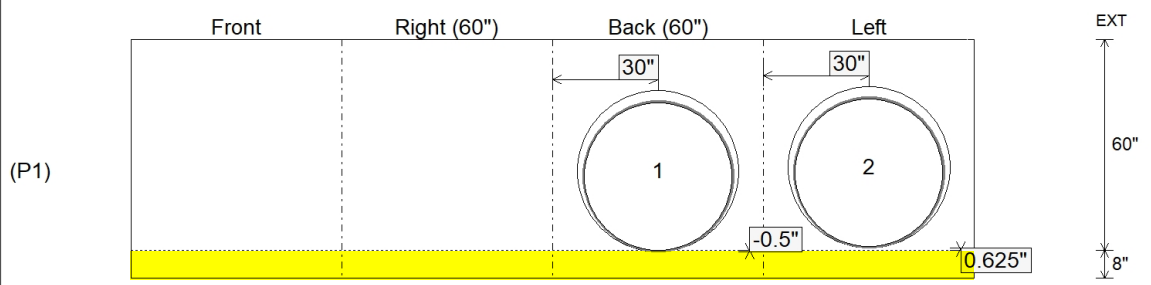
RIGHT-SIDE UP VIEW (int. dimensions)

UPSIDE-DOWN VIEW (int. dimensions)



1ST POUR (FLOOR) = 3,880 LBS
 2ND POUR (WALLS) = 8,722 LBS

INSIDE WALL DIMENSIONS



1ST POUR (FLOOR)
 STUB #5 L BARS OUT TOP
 OF FLOOR FOR
 CONNECTING WALLS

Coating (Int): Coating (Ext):	Seam Up: Flat Seam Dn: n/a	Wall Thickness: 8" Floor Height: 8"	Height (Int): 60" Height (Ext): 68"	Weight (Net): 12602 lb Volume (Net): 3.22cu.yd
----------------------------------	-------------------------------	--	--	---

Job Name: 23-1914 - KYTC Daviess County ID 231032
 Job Location: Owensboro, KY 42701
 Contractor: Mick-Murf Construction Inc.

Plant: 100

Tech: J. Horsley

1/14/2026 12:52:02 PM

PC: C. Goff



Structure ID: 087 (KY B 10ft)

P1A BX6060-08BA60

BOX BASE 8inW, 8inF F/n

- P6) 8" x 120" - CB INLET KY B 10' TOP F/G - 9"
- P5) 24" x 120" - CB INLET KY B 10' BOTTOM LEFT T/G - 17"
- P4) 24" x 24" - FIELD ADJUSTMENT - 3"
- P3) 24" x 24" - BOX RISER 8inW F/G - 42"
- P2) 60" x 60" - CB FT REDUCER 24"X24" HOLE T/F - 8"
- P1) 60" x 60" - BOX BASE 8inW, 8inF F/n - 60"
- 1) 60" x 60" - Conseal CS-102 1.00"
- 2) 24" x 24" - Conseal CS-102 1.00"
- 2) Hole - 46
- 1) Hole - 6

1660 lb
 2650 lb
 0 lb
 3590 lb
 3491 lb
 12602 lb
 0 lb
 0 lb
 0 lb
 0 lb

 Structure Total: 23993 lb

Structure Notes:

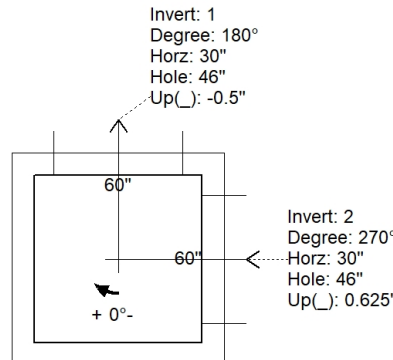
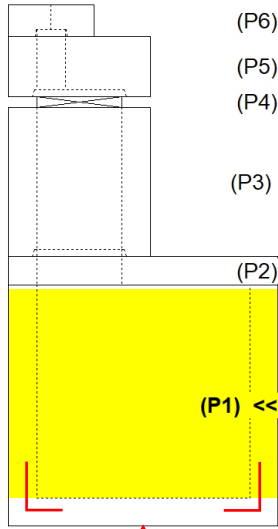
- ** KYTC STATE PROJECT **
 - 1. PER KYTC CBI TYPE B / ASTM C913 SPEC'S.
 - 2. CONCRETE = 4,000 PI AT 28 DAYS.
 - 3. NO STEPS & NO INVERT CHANNEL.
 - 5. CBI KY B F/G - BY OTHERS.
- REINFORCING PER ASTM A615 (GRADE 60).
 - TOP PHASE (As .62) #5 BARS AT 6" C.C.E.W.
 - WALLS/FLOOR (As .31) #5 BARS AT 6" C.C.E.W.

Rim: 424.69' Rim to Invert: 11.63' Slack: 0.56" Sump: 0" Step Position:

Position	Elev	Angle	Ext. (cw)	Pipe	Pipe OD	Connector	Hole	Horz Size	Up ()	Offset
Invert 1	413.06'	180°	38"	42" CMP	43"	Hole 46	46"	46"	-0.5"	0"
Invert 2	413.15'	270°	38"	42" CMP	43"	Hole 46	46"	46"	0.625"	0"
Invert 3										
Invert 4										
Invert 5										
Invert 6										
Invert 7										
Invert 8										

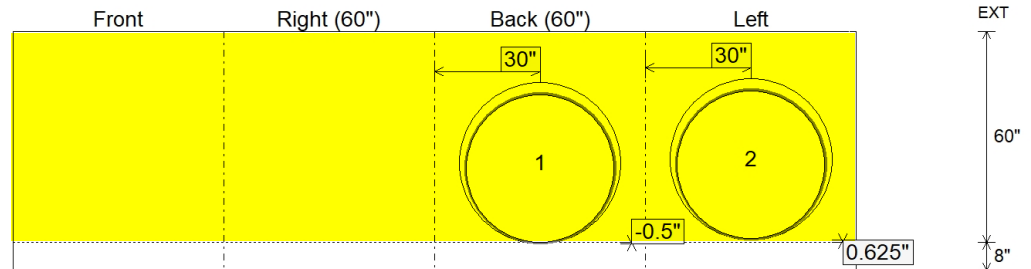
RIGHT-SIDE UP VIEW (int. dimensions)

UPSIDE-DOWN VIEW (int. dimensions)



**1ST POUR (FLOOR) = 3,880 LBS
 2ND POUR (WALLS) = 8,722 LBS**

INSIDE WALL DIMENSIONS



2ND POUR (WALLS)

Coating (Int):
 Coating (Ext):

Seam Up: Flat
 Seam Dn: n/a

Wall Thickness: 8"
 Floor Height: 8"

Height (Int): 60"
 Height (Ext): 68"

Weight (Net): 12602 lb
 Volume (Net): 3.22cu.yd