

Job Name: 23-1914 - KYTC Daviess County ID 231032
 Job Location: Owensboro, KY 42701
 Contractor: Mick-Murf Construction Inc.

Plant: 100

1/14/2026 8:21:05 AM

Tech: J. Horsley

PC: C. Goff



Structure ID: 075 (KY B 10ft)

P2 BX036036-08TS024024

CB FT REDUCER 24"X24" HOLE T/F

- P4) 8" x 120" - CB INLET KY B 10' TOP F/G - 9"
- P3) 24" x 120" - CB INLET KY B 10' BOTTOM RIGHT T/G - 17"
- P2) 36" x 36" - CB FT REDUCER 24"X24" HOLE T/F - 8"
- P1) 36" x 36" - BOX BASE 8inW, 8inF, Variable Ht F/n - 40"
- 1) 36" x 36" - Conseal CS-102 1.00"
- 1) 24" x 24" - Conseal CS-102 1.00"
- 2) Hole - 28
- 1) Hole - 6

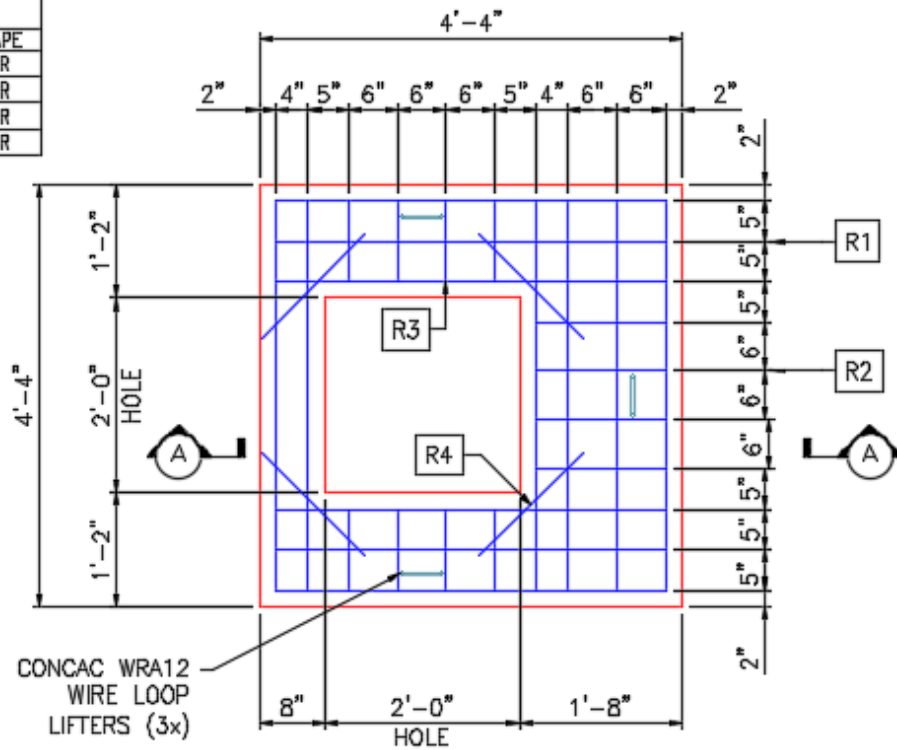
- 1660 lb
- 2650 lb
- 1429 lb
- 5695 lb
- 0 lb
- 0 lb
- 0 lb
- 0 lb
- 0 lb

Structure Total: 11434 lb

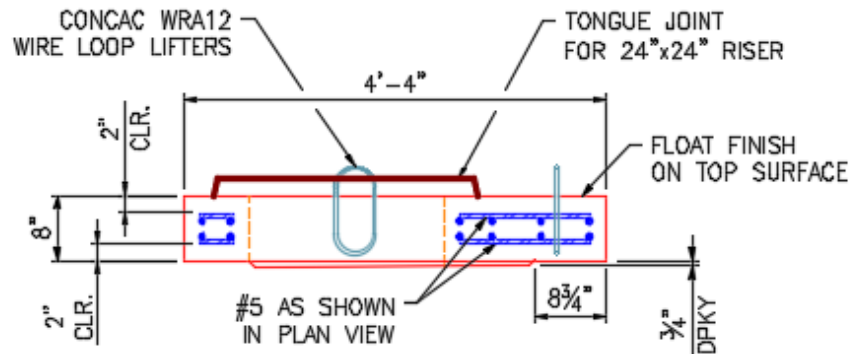
Structure Notes:

- ** KYTC STATE PROJECT **
 - 1. PER KYTC CBI TYPE B / ASTM C913 SPEC'S.
 - 2. CONCRETE = 4,000 PI AT 28 DAYS.
 - 3. NO STEPS & NO INVERT CHANNEL.
 - 5. CBI KY B F/G - BY OTHERS.
- REINFORCING PER ASTM A615 (GRADE 60).
- TOP PHASE (As .62) #5 BARS AT 6" C.C.E.W.
 - TRANS. SLAB (As .31) #5 BARS AT 6" C.C.E.W. (DBL MAT.)
 - WALLS/FLOOR (As .31) #5 BARS AT 12" C.C.E.W.

REINFORCEMENT CUT LIST				
BAR	QTY	MATERIAL	LENGTH	SHAPE
R1	24	#5 BAR	4'-0"	STR
R2	8	#5 BAR	1'-4"	STR
R3	16	#5 BAR	0'-10"	STR
R4	4	#5 BAR	1'-6"	STR



PLAN VIEW



SECTION A-A

Coating (Int):
 Coating (Ext):

Seam Up: Tongue
 Seam Dn: Flat

Wall Thickness: 8"

Height (Ext): 8"

Weight (Net): 1429 lb
 Volume (Net): 0.36cu.yd