

Job Name: 23-1914 - KYTC Daviess County ID 231032  
 Job Location: Owensboro, KY 42701  
 Contractor: Mick-Murf Construction Inc.

Plant: 100  
 1/8/2026 10:58:59 AM

Tech: J. Horsley  
 PC: C. Goff



**Structure ID: 069 (DBI-16S)**

**P2 BX024060-08LD08SP**

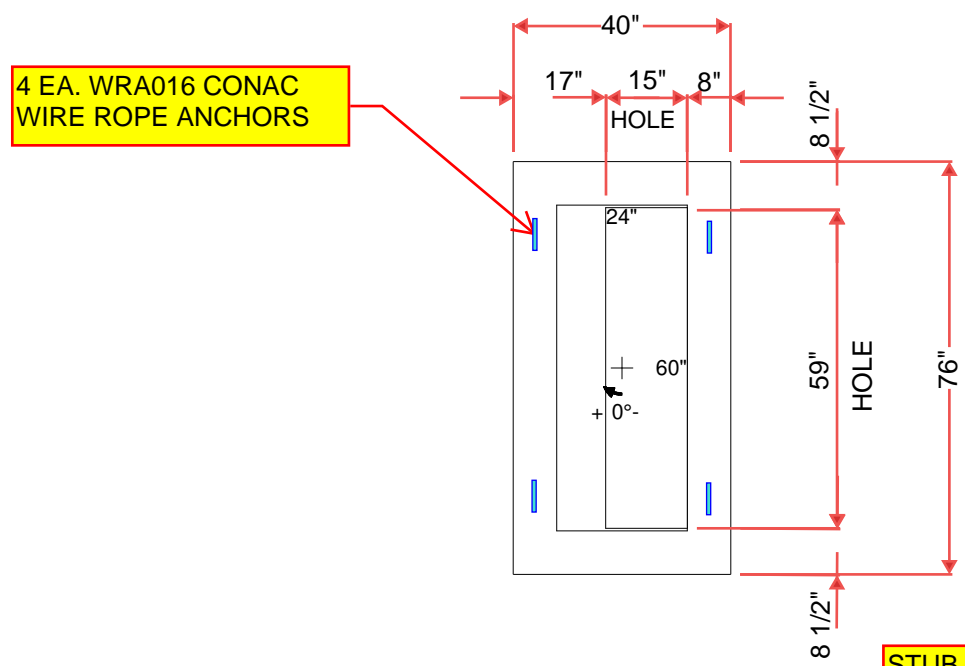
**CB FLAT TOP 8"W w/15"x59" HOLE F/F**

- P3) 15" x 59" - P.I.P. - BY OTHERS - 8"
- P2) 24" x 60" - CB FLAT TOP 8"W w/15"x59" HOLE F/F - 8"
- P1) 24" x 60" - BOX BASE 8inW, 8inF F/n - 42"
- 1) 24" x 60" - Conseal CS-102 1.00"
- 2) Hole - 22
- 1) Hole - 18
- 1) DOGHOUSE INVRTD - 16"x16"
- 1) Hole - 6

0 lb  
 1447 lb  
 6793 lb  
 0 lb  
 0 lb  
 0 lb  
 0 lb  
 0 lb  
 0 lb  
 Structure Total: 8240 lb

**Structure Notes:**  
 \*\*KYTC STATE PROJECT\*\*  
 1. KYTC DBI TYPE 16S / ASTM C-913 SPEC'S.  
 2. CONCRETE = 4,000 PSI AT 28 DAYS.  
 3. NO STEPSS & NO INVERT CHANNEL.  
 4. HOE K-230S F/G (DBI-16S) - BY OTHERS.  
 5. STUB #5 BARS 6" OUT TOP OF TOP SLAB  
 SPA AT 12" C/C AROUND 15X27 HOLE

REINFORCING PER ASTM A615 (GRADE 60).  
 - TOP SLAB (As .62) #5 BARS AT 6" C.C.E.W. (DBL MAT).  
 - WALLS (As .31) #5 BARS AT 12" C.C.E.W.  
 - FLOOR (As .31) #5 BARS AT 12" C.C.E.W.

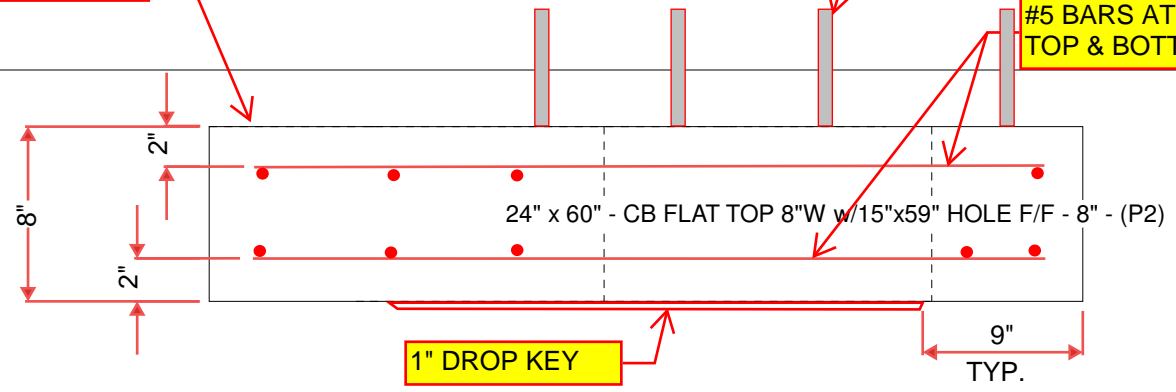


4 EA. WRA016 CONAC WIRE ROPE ANCHORS

STUB #5 BARS 6" OUT TOP OF SLAB SPA AT 12" C/C AROUND 15x27 HOLE

FLOAT FINISH ON TOP SURFACE

#5 BARS AT 6" C.C.E.W TOP & BOTTOM LAYERS



1" DROP KEY

Coating (Int): Coating (Ext):	Seam Up: Flat Seam Dn: Flat	Wall Thickness: 8"	Height (Ext): 8"	Weight (Net): 1447 lb Volume (Net): 0.37cu.yd
----------------------------------	--------------------------------	--------------------	------------------	--