

**Structure ID: 031 (KY B 10ft)**

**P1 BX2424-08BAVF**

**BOX BASE 8inW, 8inF, Variable Ht F/n**

P4) 8" x 120" - CB INLET KY B 10' TOP F/G - 9" P3) 24" x 120" - CB INLET KY B 10' BOTTOM LEFT T/G - 17" P2) 24" x 24" - FIELD ADJUSTMENT - 3" P1) 24" x 24" - BOX BASE 8inW, 8inF, Variable Ht F/n - 25" 2) 24" x 24" - Conseal CS-102 1.00" 1) Hole - 18 1) Hole - 6	1660 lb 2650 lb 0 lb 3032 lb 0 lb 0 lb 0 lb ----- Structure Total: 7343 lb
---	--

**Structure Notes:**  
 \*\* KYTC STATE PROJECT \*\*  
 1. PER KYTC CBI TYPE B / ASTM C913 SPEC'S.  
 2. CONCRETE = 4,000 PI AT 28 DAYS.  
 3. NO STEPS & NO INVERT CHANNEL.  
 5. CBI KY B F/G - BY OTHERS.

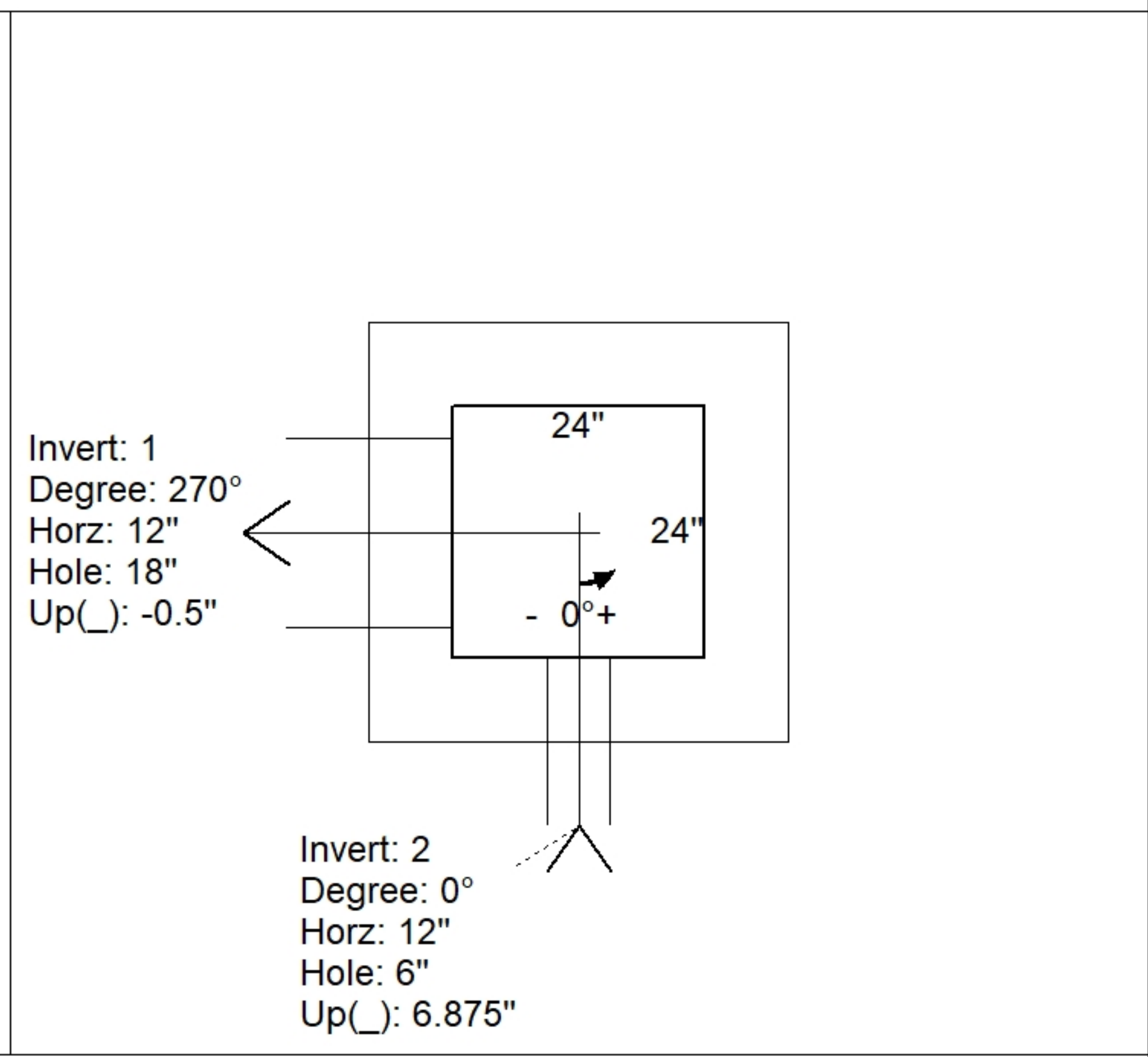
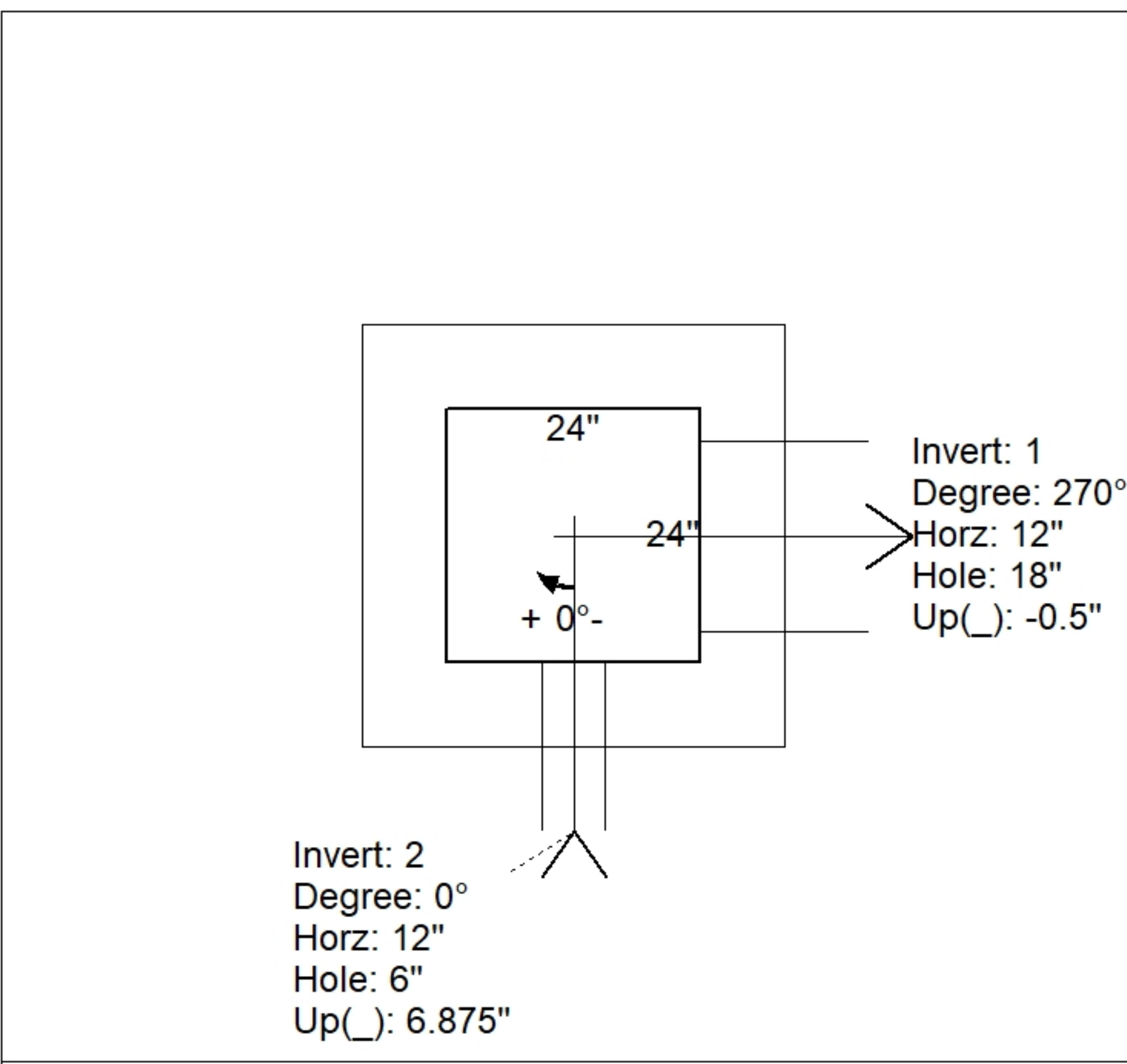
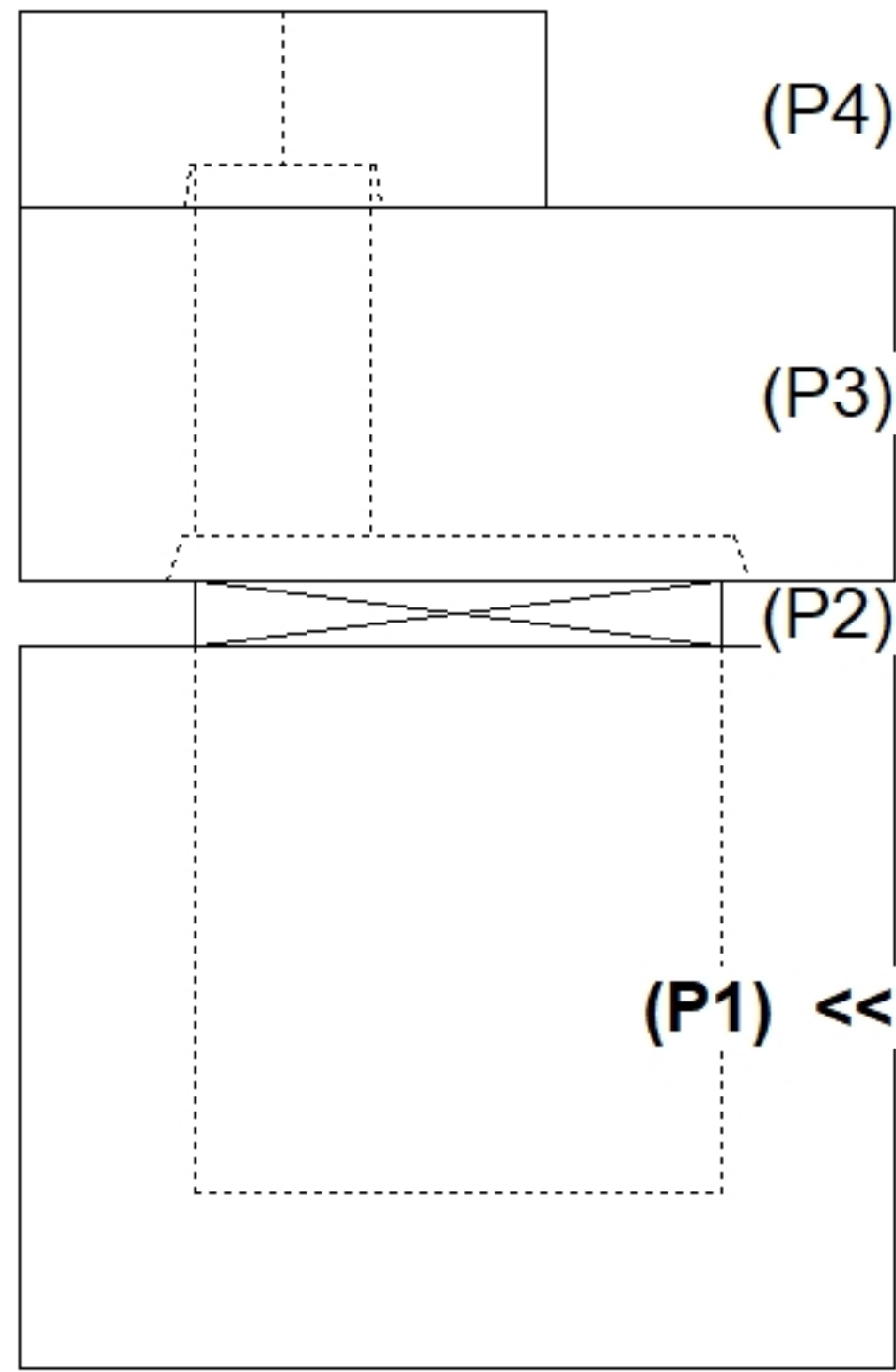
REINFORCING PER ASTM A615 (GRADE 60).  
 - TOP PHASE (As .62) #5 BARS AT 6" C.C.E.W.  
 - WALLS (As .31) #5 BARS AT 12" C.C.E.W.  
 - FLOOR (As .31) #5 BARS AT 12" C.C.E.W.

Rim: 443.47'    Rim to Invert: 4.58'    Slack: 0.96"    Sump: 0"    Step Position:

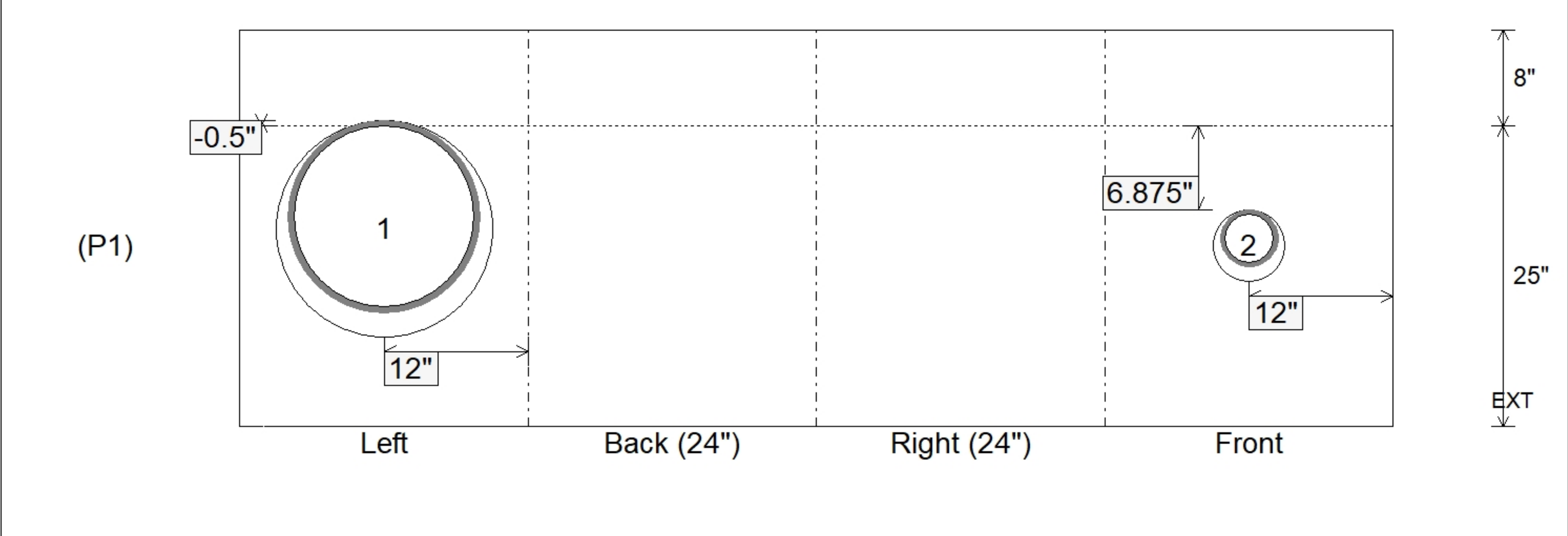
Position	Elev	Angle	Ext. (cw)	Pipe	Pipe OD	Connector	Hole	Horz Size	Up ( )	Offset
Invert 1	438.89'	270°	20"	15" CMP	16"	Hole 18	18"	18"	-0.5"	0"
Invert 2	439.5'	0°	20"	4" HDPE (perf pipe)	4.8"	Hole 6	6"	6"	6.875"	0"
Invert 3										
Invert 4										
Invert 5										
Invert 6										
Invert 7										
Invert 8										

RIGHT-SIDE UP VIEW (int. dimensions)

UPSIDE-DOWN VIEW (int. dimensions)



INSIDE WALL DIMENSIONS



Coating (Int):	Seam Up: Flat Seam Dn: n/a	Wall Thickness: 8" Floor Height: 8"	Height (Int): 25" Height (Ext): 33"
Coating (Ext):			Weight (Net): 3032 lb Volume (Net): 0.78cu.yd