

Job Name: 26-1227 - Project Colt
 Job Location: Evansville, IN
 Contractor: Russell's Excavating

Plant: 100
 5/12/2026 11:30:58 AM

Tech: Jared - F
 PC: A. Chambers



Structure ID: 109-19 MHK

P2 MH072LD10-24X36RECT

MH FLAT TOP w/24"x36" Hole F/F

- P3) 24" x 36" - CASTING HEIGHT - 4"
- P2) 72" - MH FLAT TOP w/24"x36" Hole F/F - 10"
- P1) 72" - MH BASE Custom Ht F/n - 72"
- 1) CASTING - HOE 518 F/G
- 1) 72" - Conseal CS-102 1.00"
- 1) 24" x 36" - Conseal CS-102 1.00"
- 2) Hole - 50
- 2) Hole - 6
- 6) MH Step ML-10-TDS-NCR - 10"

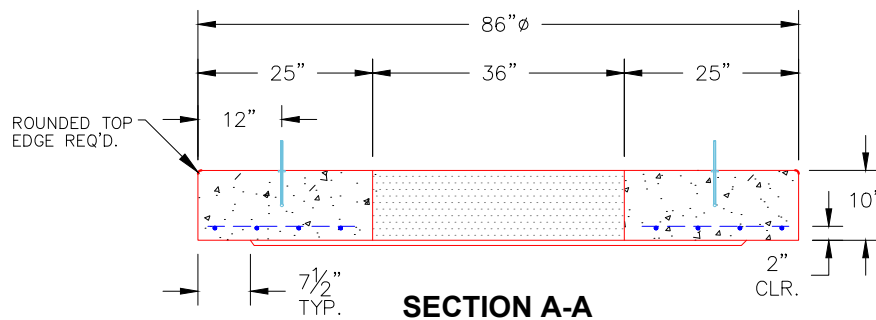
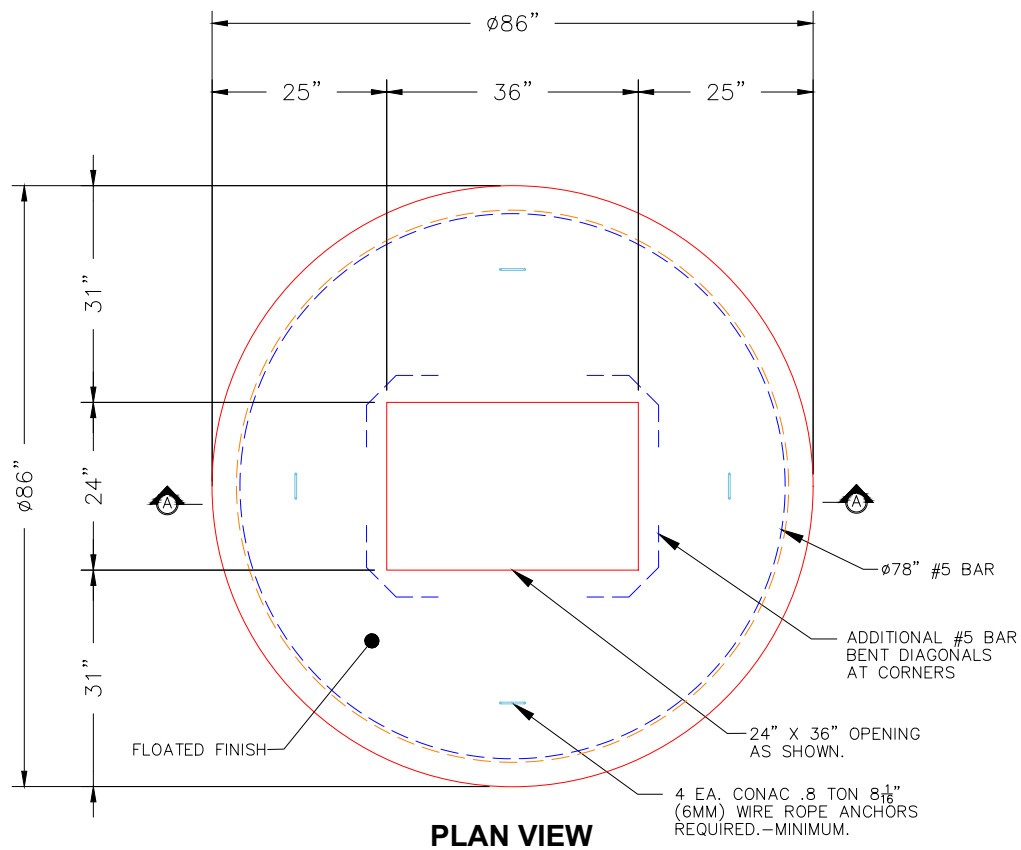
0 lb
 4149 lb
 11857 lb
 354 lb
 0 lb
 0 lb
 0 lb
 0 lb
 0 lb
 0 lb

Structure Total: 16360 lb

Structure Notes:

1. INDOT MH TYPE K / ASTM C478 SPEC'S.
2. CONCRETE = 4,000 PSI AT 28 DAYS.
3. NO INVERT CHANNEL.
4. CASTING BY ICAST (HOE 518 F/G).

REINFORCING PER ASTM A615 (GRADE 60).
 - TOP SLAB (As .62) #5 BARS AT 6" C.C.E.W..
 - RISER/WALLS (As .18)
 - FLOOR (As .37) #5 BARS AT 10" C.C.E.W.



NOTES:

1. MANUFACTURED TO ASTM C-478 (LATEST REVISION).
2. CONCRETE: 4,000 PSI AT 28 DAYS.
3. REINFORCING: #5 BAR @ 6" O.C. E.W. (GRADE 60).

Coating (Int): Coating (Ext):	Seam Up: Flat Seam Dn: Flat	Wall Thickness: 7"	Height (Ext): 10"	Weight (Net): 4149 lb Volume (Net): 1.06cu.yd
----------------------------------	--------------------------------	--------------------	-------------------	--