

Job Name: 25-4590 Uhlhorn Sewer Repairs  
 Job Location: Evansville, IN  
 Contractor: Bowen Engineering Corporation

Plant: Beaver Dam  
 5/11/2026 10:20:35 AM

Tech: S. Felletter  
 PC: A. Chambers



**Structure ID: 101 (7)**

**P2 MH060TS15-48ECC-CDARED**

**MH TRANS. SLAB ECC w/ConBlock-CDA Red T/G**

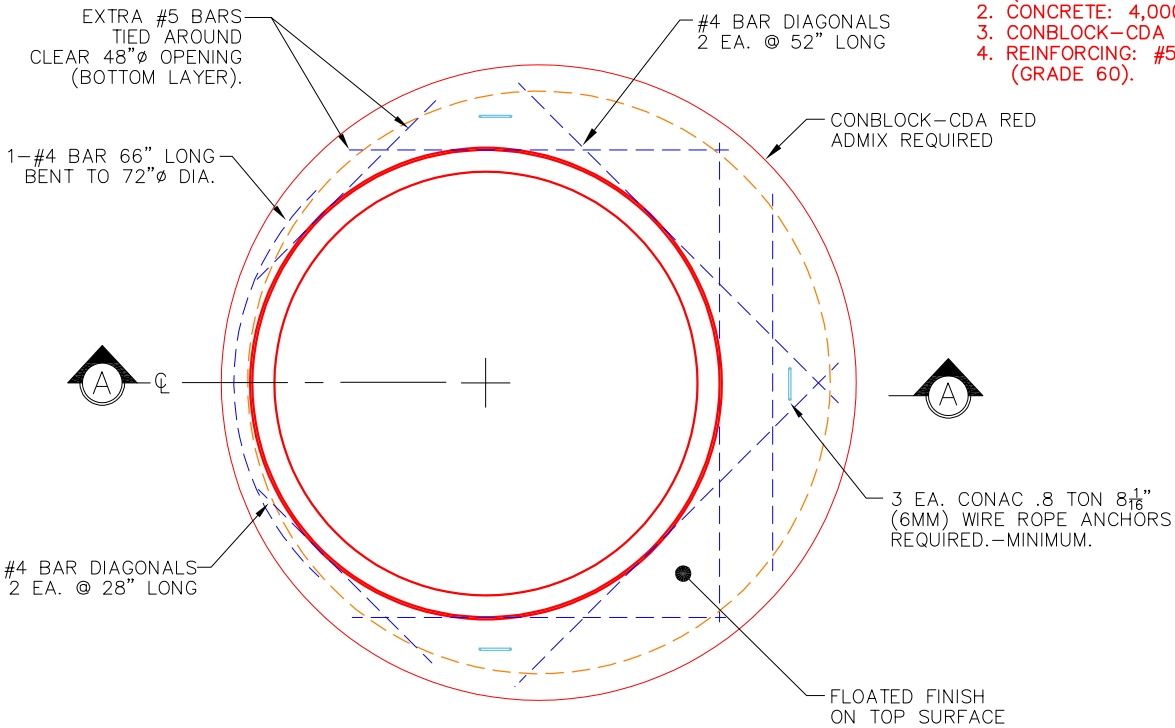
P6) 24" - CASTING HEIGHT - 7"	0 lb
P5) 48" - ECC CONE w/ 24" HOLE, w/ConBlock-CDA Red F/G - 30"	1961 lb
P4) 48" - MH RISER w/ConBlock-CDA Red T/G - 72"	5030 lb
P3) 48" - MH RISER w/ConBlock-CDA Red T/G - 72"	5030 lb
P2) 60" - MH TRANS. SLAB ECC w/ConBlock-CDA Red T/G - 15"	2204 lb
P1) 60" - MH BASE Custom Ht, w/ConBlock-CDA Red T/n - 68"	9092 lb
1) JOINT WRAP - 0.065"x6"x50' CONSEAL CS212	0 lb
1) JOINT WRAP PRIMER - CONSEAL CS-75 (1 gal.)	0 lb
1) 60" - MH INVERT CHANNEL EWSU w/ConBlock-CDA Red - FULL HEIGHT	2962 lb
1) CASTING - HOE MC-315 F/C Sanitary	258 lb
1) 60" - Conseal CS-102 1.00" (Double)	0 lb
3) 48" - Conseal CS-102 1.00" (Double)	0 lb
2) Kor-N-Seal2 - S206-30	13 lb
<b>Structure Total:</b>	<b>26550 lb</b>

**Structure Notes:**  
 1. PER ASTM C478 SPECIFICATIONS.  
 2. CONCRETE = 4,000 PSI AT 28 DAYS.  
 3. CASTING BY ICAST (HOE MC-315 F/C "SANITARY").  
 4. NO STEPS.

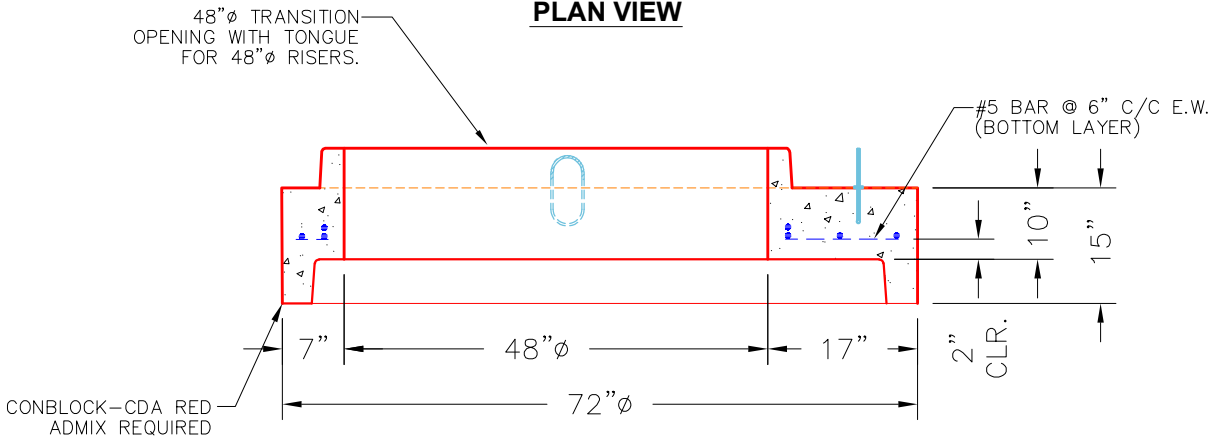
REINFORCING PER ASTM A615 (GRADE 60).  
 - TOP SLAB (As .31) #5 BARS AT 6" C.C.E.W.  
 - RISER/WALLS (As .18)  
 - FLOOR (As .37) #5 BARS AT 10" C.C.E.W.

**NOTES:**

1. MANUFACTURED TO ASTM C-478 (LATEST REVISION).
2. CONCRETE: 4,000 PSI AT 28 DAYS.
3. CONBLOCK-CDA RED ADMIXTURE REQUIRED.
4. REINFORCING: #5 BAR @ 6" C/C E.W. (GRADE 60).



**PLAN VIEW**



**SECTION A-A**

Coating (Int): Coating (Ext):	Seam Up: Tongue Seam Dn: Groove	Wall Thickness: 6"	Height (Ext): 15"	Weight (Net): 2204 lb Volume (Net): 0.56cu.yd
----------------------------------	------------------------------------	--------------------	-------------------	--