

Job Name: 26-1227 - Project Colt
 Job Location: Evansville, IN
 Contractor: Russell's Excavating

Plant: 100
 5/12/2026 11:30:55 AM

Tech: Jared - F
 PC: A. Chambers



Structure ID: 106-16 MHK

P2 MH072LD15-24ECC

MH FLAT LID w/24in ECC Hole F/G

- P3) 24" - CASTING HEIGHT - 1"
- P2) 72" - MH FLAT LID w/24in ECC Hole F/G - 15"
- P1) 72" - MH BASE Custom Ht T/n - 67"
- 1) EJ 6489 GRATE
- 1) 72" - Conseal CS-102 1.00"
- 2) Hole - 50
- 5) MH Step ML-10-TDS-NCR - 10"

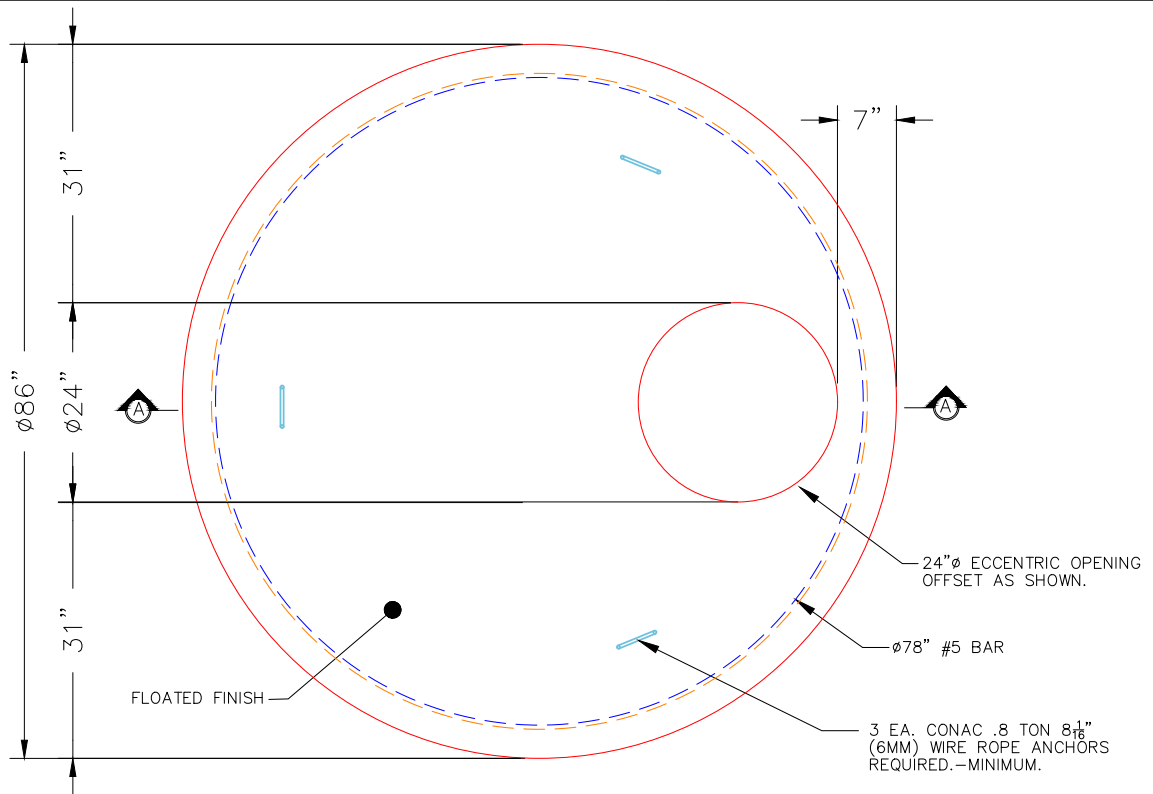
0 lb
 5098 lb
 11161 lb
 0 lb
 0 lb
 0 lb
 0 lb
 0 lb

Structure Total: 16259 lb

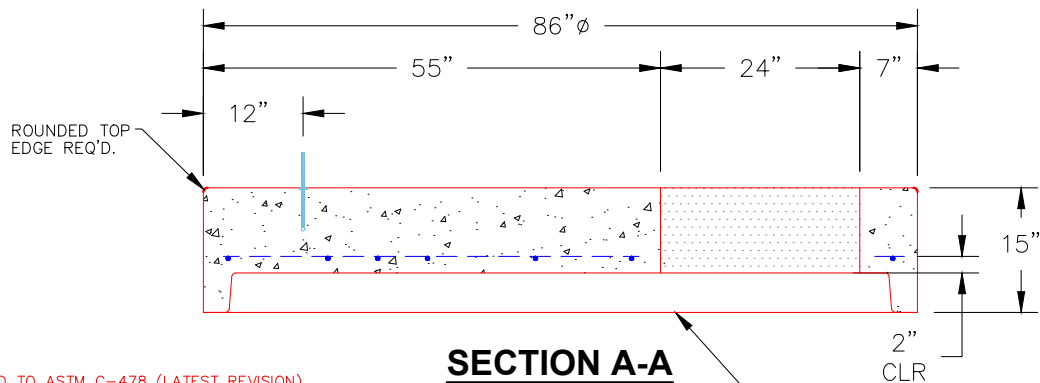
Structure Notes:

1. INDOT MH TYPE K / ASTM C478 SPEC'S.
2. CONCRETE = 4,000 PSI AT 28 DAYS.
3. NO INVERT CHANNEL.
4. CASTING BY ICAST (EJ 6489 GRATE).

REINFORCING PER ASTM A615 (GRADE 60).
 - TOP SLAB (As .62) #5 BARS AT 6" C.C.E.W..
 - RISER/WALLS (As .18)
 - FLOOR (As .37) #5 BARS AT 10" C.C.E.W.



PLAN VIEW



SECTION A-A

NOTES:

1. MANUFACTURED TO ASTM C-478 (LATEST REVISION).
2. CONCRETE: 4,000 PSI AT 28 DAYS.
3. REINFORCING: #5 BAR @ 6" O.C. E.W. (GRADE 60).

Coating (Int):
 Coating (Ext):

Seam Up: Flat
 Seam Dn: Groove

Wall Thickness: 7"

Height (Ext): 15"

Weight (Net): 5098 lb
 Volume (Net): 1.3cu.yd