

Job Name: 25-2600P2 - Quicktrip 7160
 Job Location: Louisville, KY
 Contractor: Cornell Harbison Excavating

Plant: Beaver Dam
 5/29/2026 8:27:28 AM

Tech: J. Coppage
 PC: J. Jarvis



Structure ID: DBI-13G - cust. top slab

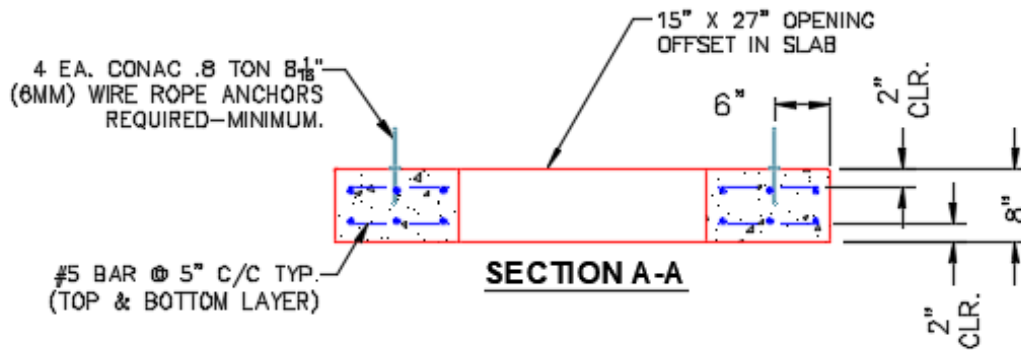
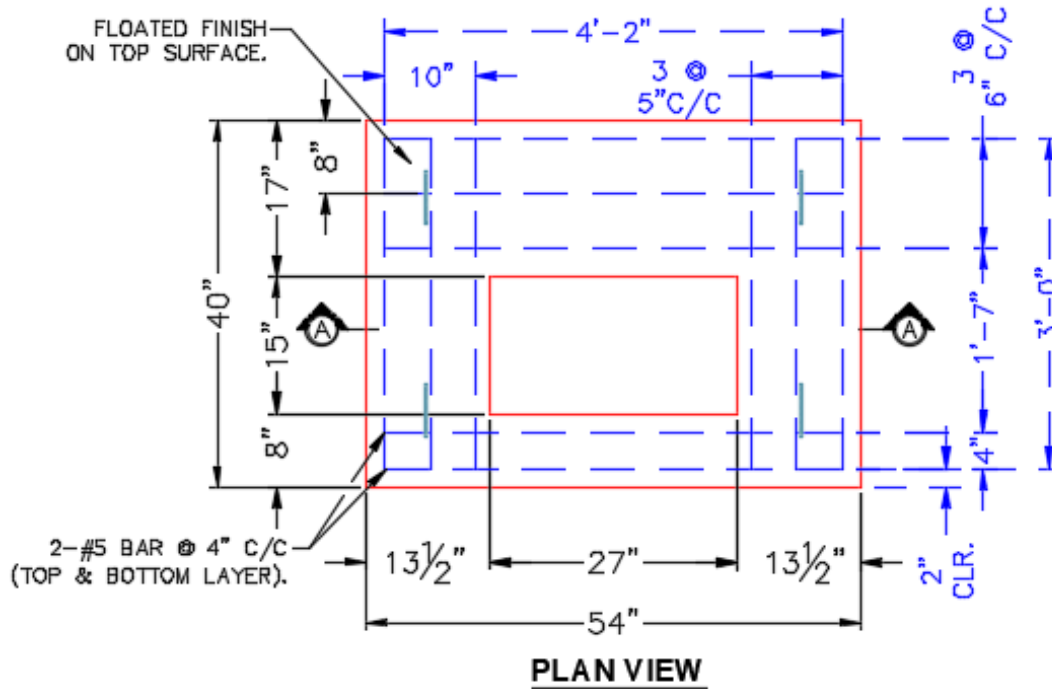
P1 CTS

Custom Top Slab 8"W w/15"x27" Hole F/F

P1) 24" x 38" - Custom Top Slab 8"W w/15"x27" Hole F/F - 8"

Structure Total: 8958 lb

Structure Notes:
 1. PER KYTC DBI-13G /ASTM C913 SPECIFICATIONS.
 2. CONCRETE = 4,000 PSI AT 28 DAYS.
 3. CASTING (HOE KY-230G F/G) SUPPLIED BY CONTRACTOR.
 REINFORCING PER ASTM AS615 (GRADE 60).
 - (As .62) #5 BARS AT 6" C.C.E.W. (DBL MAT)



#5 BAR CUT LIST
 10 EA. @ 50" LG.
 12 EA. @ 36" LG.

Coating (Int):
 Coating (Ext):

Seam Up: Flat
 Seam Dn: Flat

Wall Thickness: 8"

Height (Ext): 8"

Weight (Net): 8958 lb
 Volume (Net): 2.29cu.yd