

Job Name: 25-2397B - Sandy Springs Section 2 Sanitary  
 Job Location: Elizabethtown, KY 42701  
 Contractor: Gary Clifford

Plant: 100

5/27/2026 12:38:47 PM

Tech: J. Horsley

PC: T. Lewis



**Structure ID: MH 3**

**P1 MH048BA24**

**MH BASE T/n**

- P4) 24" - CASTING HEIGHT - 7"
- P3) 24" - GRADE RING F/F - 4"
- P2) 48" - ECC CONE w/ 24" HOLE F/G - 30"
- P1) 48" - MH BASE T/n - 24"
- 1) 48" - MH INVERT CHANNEL - FULL HEIGHT
- 1) JOINT WRAP - 0.065"x6"x50' CONSEAL CS212
- 1) JOINT WRAP PRIMER - CONSEAL CS-75 (1 gal.)
- 1) CASTING - HOE MC-315 F/C Sanitary
- 1) 48" - Conseal CS-102 1.00" (Double)
- 1) 24" - Conseal CS-102 1.00" (Double)
- 3) PSX - 12-08 DD (DBL Bands)
- 4) MH Step ML-10-TDS-NCR - 10"

0 lb  
 270 lb  
 2050 lb  
 2863 lb  
 1440 lb  
 0 lb  
 0 lb  
 258 lb  
 0 lb  
 0 lb  
 0 lb  
 24 lb  
 0 lb  
 -----  
 Structure Total: 6905 lb

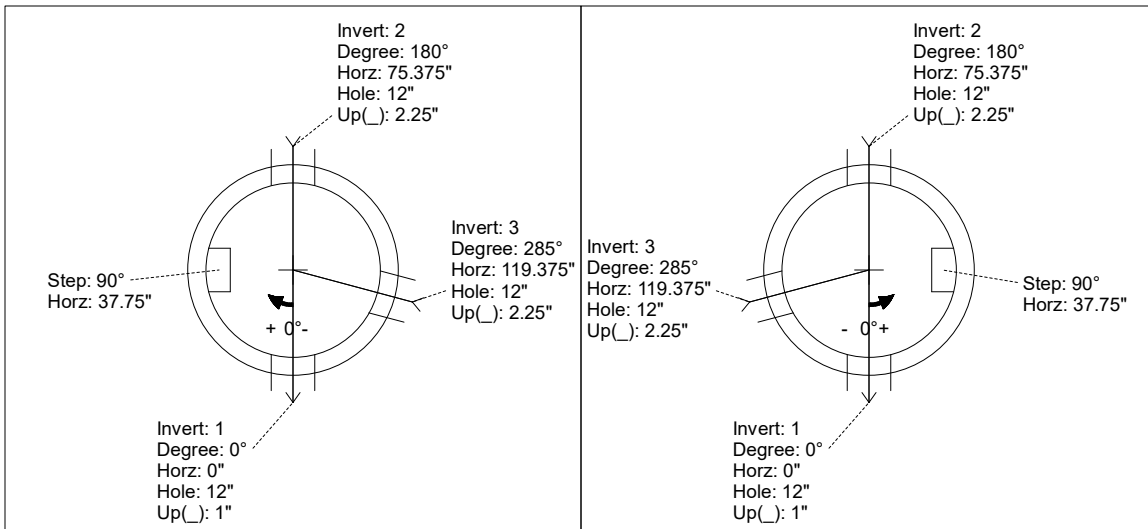
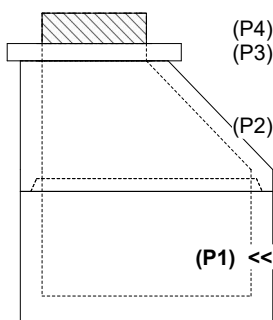
- Structure Notes:**
1. PER ASTM C-478 SPECIFICATIONS
  2. CONCRETE: 4,000 PSI AT 28 DAYS
  3. REINFORCEMENT: PER ASTM A615
  4. INVERT CHANNEL REQUIRED
  5. STEPS AT 90 DEGREES
  6. HOE MC-315 FRAME & COVER "SANITARY" SUPPLIED BY ICAST
  7. DOUBLE BANDS REQUIRED FOR EACH DIRECT DRIVE BOOT (SUPPLIED BY ICAST)

Rim: 689.5' Rim to Invert: 5.18' Slack: 0.16" Sump: 3" Step Position: 90°

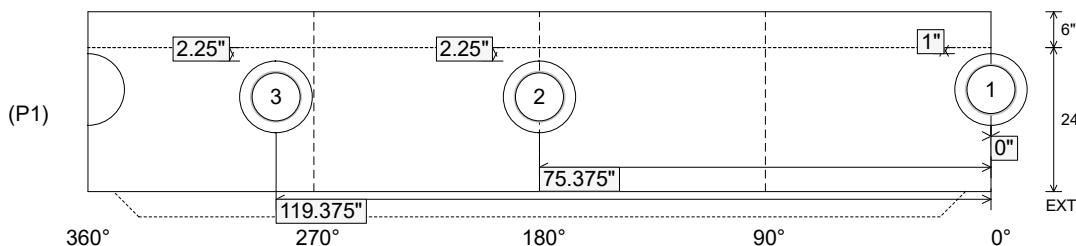
Position	Elev	Angle	Ext. (cw)	Pipe	Pipe OD	Connector	Hole	Horz Size	Up ( )	Offset
Invert 1	684.32'	0°	0"	8" PVC SDR35	8.5"	PSX 12-08 DD (DBL Bands)	12"	12.129"	1"	0"
Invert 2	684.42'	180°	91.125"	8" PVC SDR35	8.5"	PSX 12-08 DD (DBL Bands)	12"	12.129"	2.25"	0"
Invert 3	684.42'	285°	144.25"	8" PVC SDR35	8.5"	PSX 12-08 DD (DBL Bands)	12"	12.129"	2.25"	0"
Invert 4										
Invert 5										
Invert 6										
Invert 7										
Invert 8										

RIGHT-SIDE UP VIEW (int. dimensions)

UPSIDE-DOWN VIEW (int. dimensions)



INSIDE WALL DIMENSIONS



Coating (Int):  
 Coating (Ext):

Seam Up: Tongue  
 Seam Dn: n/a

Wall Thickness: 5"  
 Floor Height: 6"

Height (Int): 24"  
 Height (Ext): 30"

Weight (Net): 2863 lb  
 Volume (Net): 0.73cu.yd

Job Name: 25-2397B - Sandy Springs Section 2 Sanitary  
 Job Location: Elizabethtown, KY 42701  
 Contractor: Gary Clifford

Plant: 100

Tech: J. Horsley

5/27/2026 12:38:47 PM

PC: T. Lewis



**Structure ID: MH 3**

**P1 MH048BA24**

**MH BASE T/n**

- P4) 24" - CASTING HEIGHT - 7" 0 lb
  - P3) 24" - GRADE RING F/F - 4" 270 lb
  - P2) 48" - ECC CONE w/ 24" HOLE F/G - 30" 2050 lb
  - P1) 48" - MH BASE T/n - 24" 2863 lb
  - 1) 48" - MH INVERT CHANNEL - FULL HEIGHT 1440 lb
  - 1) JOINT WRAP - 0.065"x6"x50' CONSEAL CS212 0 lb
  - 1) JOINT WRAP PRIMER - CONSEAL CS-75 (1 gal.) 0 lb
  - 1) CASTING - HOE MC-315 F/C Sanitary 258 lb
  - 1) 48" - Conseal CS-102 1.00" (Double) 0 lb
  - 1) 24" - Conseal CS-102 1.00" (Double) 0 lb
  - 3) PSX - 12-08 DD (DBL Bands) 24 lb
  - 4) MH Step ML-10-TDS-NCR - 10" 0 lb
- Structure Total: 6905 lb

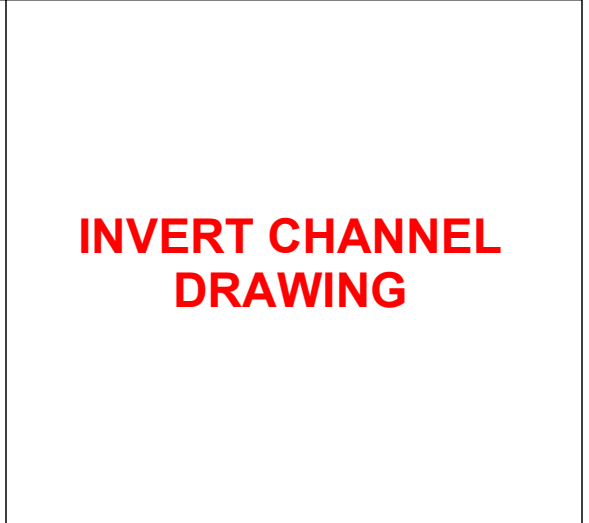
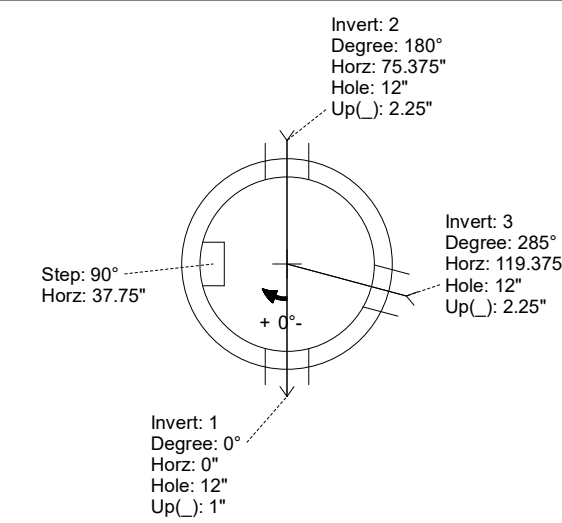
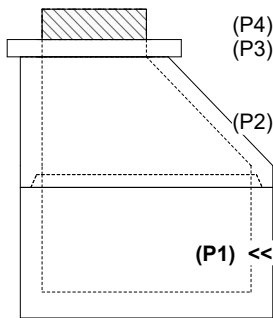
- Structure Notes:**
1. PER ASTM C-478 SPECIFICATIONS
  2. CONCRETE: 4,000 PSI AT 28 DAYS
  3. REINFORCEMENT: PER ASTM A615
  4. INVERT CHANNEL REQUIRED
  5. STEPS AT 90 DEGREES
  6. HOE MC-315 FRAME & COVER "SANITARY" SUPPLIED BY ICAST
  7. DOUBLE BANDS REQUIRED FOR EACH DIRECT DRIVE BOOT (SUPPLIED BY ICAST)

Rim: 689.5' Rim to Invert: 5.18' Slack: 0.16" Sump: 3" Step Position: 90°

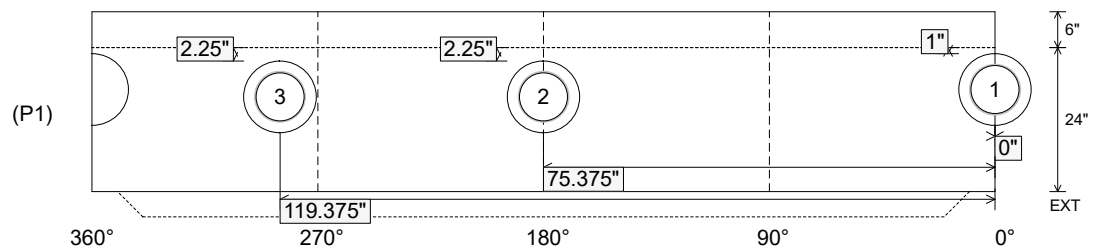
Position	Elev	Angle	Ext. (cw)	Pipe	Pipe OD	Connector	Hole	Horz Size	Up ( )	Offset
Invert 1	684.32'	0°	0"	8" PVC SDR35	8.5"	PSX 12-08 DD (DBL Bands)	12"	12.129"	1"	0"
Invert 2	684.42'	180°	91.125"	8" PVC SDR35	8.5"	PSX 12-08 DD (DBL Bands)	12"	12.129"	2.25"	0"
Invert 3	684.42'	285°	144.25"	8" PVC SDR35	8.5"	PSX 12-08 DD (DBL Bands)	12"	12.129"	2.25"	0"
Invert 4										
Invert 5										
Invert 6										
Invert 7										
Invert 8										

RIGHT-SIDE UP VIEW (int. dimensions)

UPSIDE-DOWN VIEW (int. dimensions)



INSIDE WALL DIMENSIONS



Coating (Int): Coating (Ext):	Seam Up: Tongue Seam Dn: n/a	Wall Thickness: 5" Floor Height: 6"	Height (Int): 24" Height (Ext): 30"	Weight (Net): 2863 lb Volume (Net): 0.73cu.yd
----------------------------------	---------------------------------	--	--	--