

Job Name: 25-2397B - Sandy Springs Section 2 Sanitary
 Job Location: Elizabethtown, KY 42701
 Contractor: Gary Clifford

Plant: 100

5/27/2026 12:38:46 PM

Tech: J. Horsley

PC: T. Lewis



Structure ID: MH 2

P1 MH048BA30

MH BASE T/n

- P4) 24" - CASTING HEIGHT - 7"
- P3) 24" - GRADE RING F/F - 4"
- P2) 48" - ECC CONE w/ 24" HOLE F/G - 42"
- P1) 48" - MH BASE T/n - 30"
- 1) 48" - MH INVERT CHANNEL - FULL HEIGHT
- 1) JOINT WRAP - 0.065"x6"x50' CONSEAL CS212
- 1) JOINT WRAP PRIMER - CONSEAL CS-75 (1 gal.)
- 1) CASTING - HOE MC-315 F/C Sanitary
- 1) 48" - Conseal CS-102 1.00" (Double)
- 1) 24" - Conseal CS-102 1.00" (Double)
- 3) PSX - 12-08 DD (DBL Bands)
- 6) MH Step ML-10-TDS-NCR - 10"

0 lb
 270 lb
 3200 lb
 3282 lb
 1440 lb
 0 lb
 0 lb
 258 lb
 0 lb
 0 lb
 24 lb
 0 lb

 Structure Total: 8474 lb

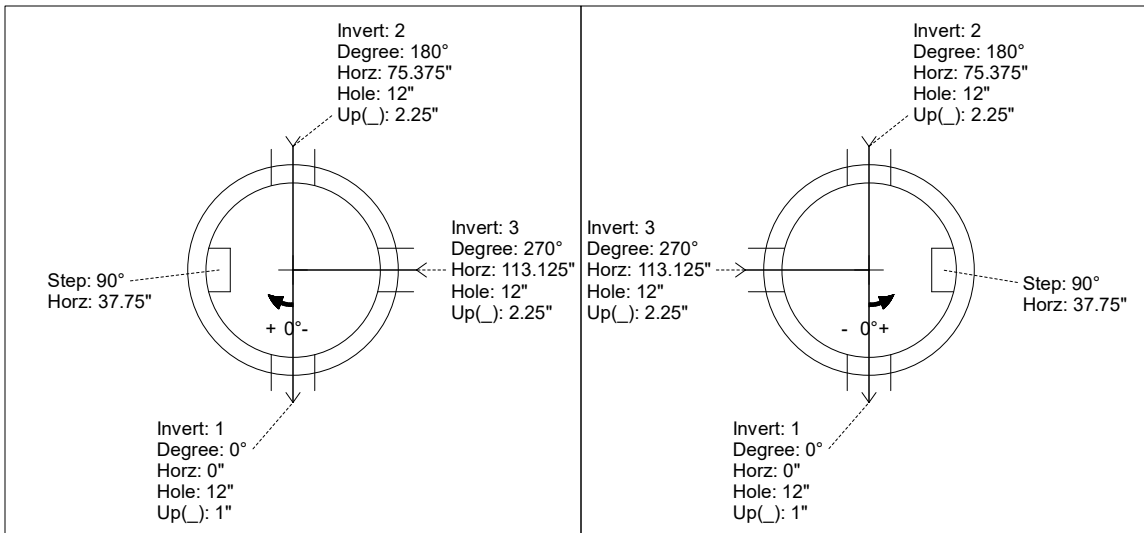
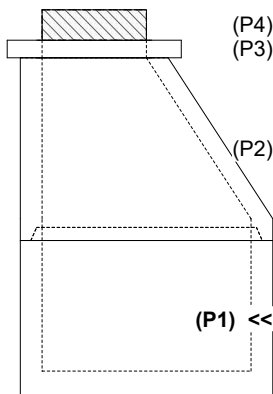
- Structure Notes:**
1. PER ASTM C-478 SPECIFICATIONS
 2. CONCRETE: 4,000 PSI AT 28 DAYS
 3. REINFORCEMENT: PER ASTM A615
 4. INVERT CHANNEL REQUIRED
 5. STEPS AT 90 DEGREES
 6. HOE MC-315 FRAME & COVER "SANITARY" SUPPLIED BY ICAST
 7. DOUBLE BANDS REQUIRED FOR EACH DIRECT DRIVE BOOT (SUPPLIED BY ICAST)

Rim: 690' Rim to Invert: 6.83' Slack: 1.96" Sump: 3" Step Position: 90°

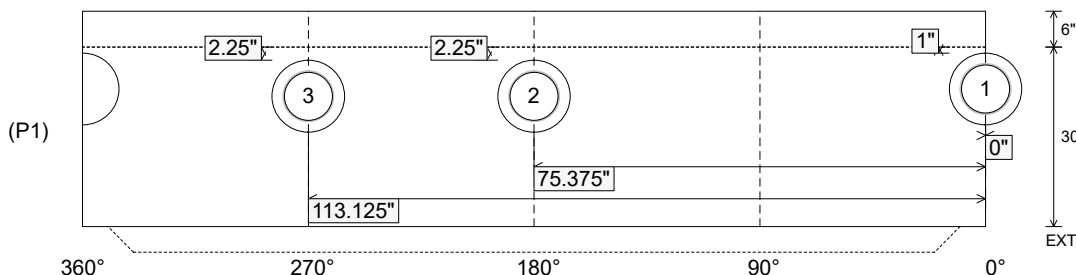
Position	Elev	Angle	Ext. (cw)	Pipe	Pipe OD	Connector	Hole	Horz Size	Up ()	Offset
Invert 1	683.17'	0°	0"	8" PVC SDR35	8.5"	PSX 12-08 DD (DBL Bands)	12"	12.129"	1"	0"
Invert 2	683.27'	180°	91.125"	8" PVC SDR35	8.5"	PSX 12-08 DD (DBL Bands)	12"	12.129"	2.25"	0"
Invert 3	683.27'	270°	136.625"	8" PVC SDR35	8.5"	PSX 12-08 DD (DBL Bands)	12"	12.129"	2.25"	0"
Invert 4										
Invert 5										
Invert 6										
Invert 7										
Invert 8										

RIGHT-SIDE UP VIEW (int. dimensions)

UPSIDE-DOWN VIEW (int. dimensions)



INSIDE WALL DIMENSIONS



Coating (Int):
 Coating (Ext):

Seam Up: Tongue
 Seam Dn: n/a

Wall Thickness: 5"
 Floor Height: 6"

Height (Int): 30"
 Height (Ext): 36"

Weight (Net): 3282 lb
 Volume (Net): 0.84cu.yd

Job Name: 25-2397B - Sandy Springs Section 2 Sanitary
 Job Location: Elizabethtown, KY 42701
 Contractor: Gary Clifford

Plant: 100

5/27/2026 12:38:46 PM

Tech: J. Horsley

PC: T. Lewis



Structure ID: MH 2

P1 MH048BA30

MH BASE T/n

- P4) 24" - CASTING HEIGHT - 7"
- P3) 24" - GRADE RING F/F - 4"
- P2) 48" - ECC CONE w/ 24" HOLE F/G - 42"
- P1) 48" - MH BASE T/n - 30"
- 1) 48" - MH INVERT CHANNEL - FULL HEIGHT
- 1) JOINT WRAP - 0.065"x6"x50' CONSEAL CS212
- 1) JOINT WRAP PRIMER - CONSEAL CS-75 (1 gal.)
- 1) CASTING - HOE MC-315 F/C Sanitary
- 1) 48" - Conseal CS-102 1.00" (Double)
- 1) 24" - Conseal CS-102 1.00" (Double)
- 3) PSX - 12-08 DD (DBL Bands)
- 6) MH Step ML-10-TDS-NCR - 10"

0 lb
 270 lb
 3200 lb
 3282 lb
 1440 lb
 0 lb
 0 lb
 258 lb
 0 lb
 0 lb
 24 lb
 0 lb

 Structure Total: 8474 lb

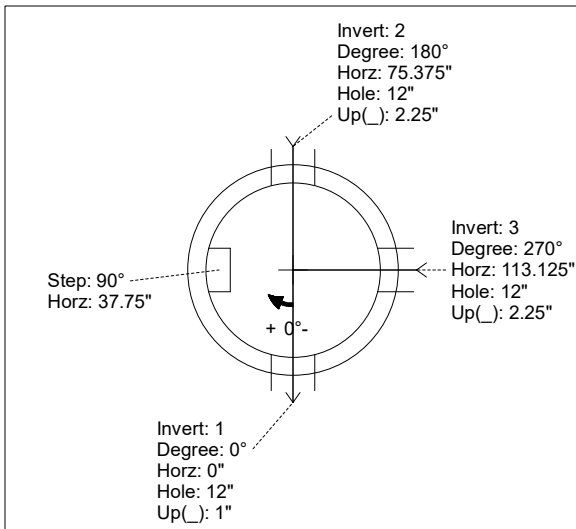
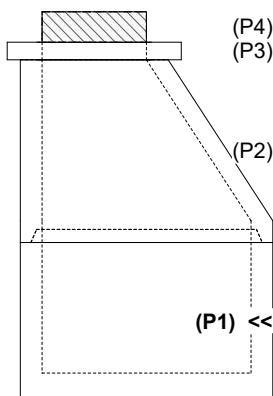
- Structure Notes:**
1. PER ASTM C-478 SPECIFICATIONS
 2. CONCRETE: 4,000 PSI AT 28 DAYS
 3. REINFORCEMENT: PER ASTM A615
 4. INVERT CHANNEL REQUIRED
 5. STEPS AT 90 DEGREES
 6. HOE MC-315 FRAME & COVER "SANITARY" SUPPLIED BY ICAST
 7. DOUBLE BANDS REQUIRED FOR EACH DIRECT DRIVE BOOT (SUPPLIED BY ICAST)

Rim: 690' Rim to Invert: 6.83' Slack: 1.96" Sump: 3" Step Position: 90°

Position	Elev	Angle	Ext. (cw)	Pipe	Pipe OD	Connector	Hole	Horz Size	Up ()	Offset
Invert 1	683.17'	0°	0"	8" PVC SDR35	8.5"	PSX 12-08 DD (DBL Bands)	12"	12.129"	1"	0"
Invert 2	683.27'	180°	91.125"	8" PVC SDR35	8.5"	PSX 12-08 DD (DBL Bands)	12"	12.129"	2.25"	0"
Invert 3	683.27'	270°	136.625"	8" PVC SDR35	8.5"	PSX 12-08 DD (DBL Bands)	12"	12.129"	2.25"	0"
Invert 4										
Invert 5										
Invert 6										
Invert 7										
Invert 8										

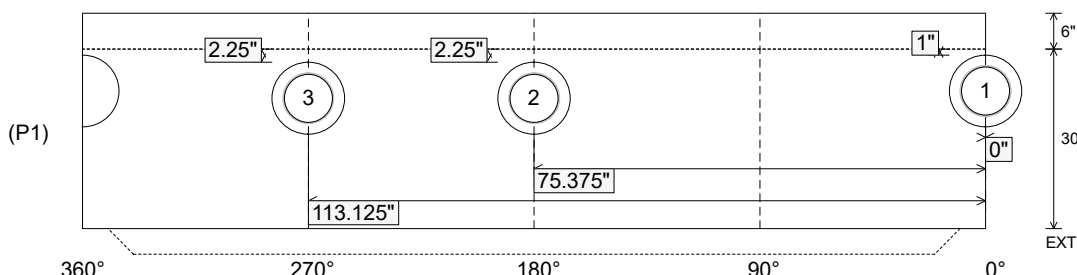
RIGHT-SIDE UP VIEW (int. dimensions)

UPSIDE-DOWN VIEW (int. dimensions)



INVERT CHANNEL DRAWING

INSIDE WALL DIMENSIONS



Coating (Int):
 Coating (Ext):

Seam Up: Tongue
 Seam Dn: n/a

Wall Thickness: 5"
 Floor Height: 6"

Height (Int): 30"
 Height (Ext): 36"

Weight (Net): 3282 lb
 Volume (Net): 0.84cu.yd