

Job Name: 26-2074 - Christian Co. Ball Field Line K  
 Job Location: Hopkinsville, KY  
 Contractor: Herring Construction, Inc.

Plant: 100

5/8/2026 6:13:58 AM

Tech: J. Horsley

PC: E. Bradley



**Structure ID: KST3 JBB**

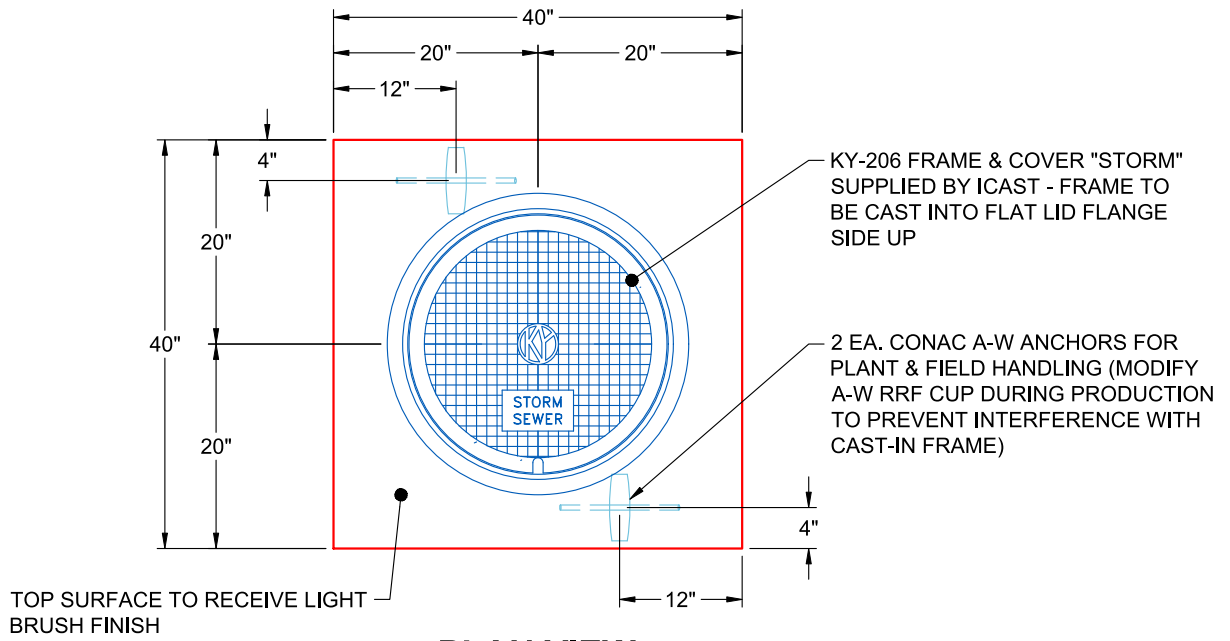
**P2 BX024024-08LD08S**

**BX FLAT LID 8inW SPEC. (KY-206 CAST IN) F/F**

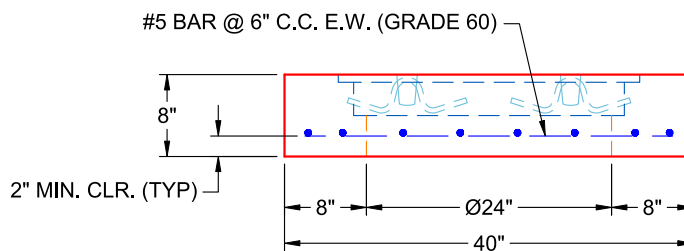
- P3) 23.5" - CASTING (cast in) - 0"
- P2) 24" x 24" - BX FLAT LID 8inW SPEC. (KY-206 CAST IN) F/F - 8"
- P1) 24" x 24" - BOX BASE 8inW, 8inF, Variable Ht F/n - 51"
- 1) This Structure Includes a Cast-in Item - HOE KY-206 Frame (Supplied by iCast)
- 1) CASTING - HOE KY-206 F/C (KY TY1)
- 1) 24" x 24" - Conseal CS-102 1.00"
- 1) Hole - 24
- 1) Hole - 18
- 1) Hole - 20

0 lb  
 925 lb  
 4847 lb  
 0 lb  
 206 lb  
 0 lb  
 0 lb  
 0 lb  
 0 lb  
 0 lb  
 -----  
 Structure Total: 5978 lb

- Structure Notes:**
1. PER KYTC JB TY B / ASTM C-913 SPECIFICATIONS
  2. CONCRETE: 4,000 PSI AT 28 DAYS
  3. REINFORCEMENT: #5 BAR @ 6" C.C. E.W. (GRADE 60) - 2" MIN. REBAR CLEARANCE (TYP)
  4. HOE KY-206 FRAME & COVER "STORM" SUPPLIED BY ICAST - FRAME TO BE CAST INTO FLAT LID FLANGE SIDE UP
  5. LIFTERS: 2 EA. CONAC A-W ANCHORS FOR PLANT & FIELD HANDLING - INSTALLED AS SHOWN
  6. TOP SURFACE TO RECEIVE LIGHT BRUSH FINISH



**PLAN VIEW  
(RIGHT SIDE UP)**



**FRONT VIEW  
(RIGHT SIDE UP)**

Coating (Int):  
 Coating (Ext):

Seam Up: Flat  
 Seam Dn: Flat

Wall Thickness: 8"

Height (Ext): 8"

Weight (Net): 925 lb  
 Volume (Net): 0.24cu.yd

**Job Number:**

26-2074

**Job Name:**

Christian Co. Ball Field Line K

**Structure:**

KST3 JBB

**Note:**

HOE KY-206 Frame Supplied By  
iCast To Be Cast Into Flat Lid Flange  
Side Up