

Job Name: 25-4731 - Mantra Journey Dispensary
 Job Location: Bardstown, KY 40004
 Contractor: Hale Contracting

Plant: 100

5/15/2026 12:12:18 PM

Tech: Jared - A

PC: T. Ryan



Structure ID: ST-3 (4)

P2 MH048LD07-18x36RECT

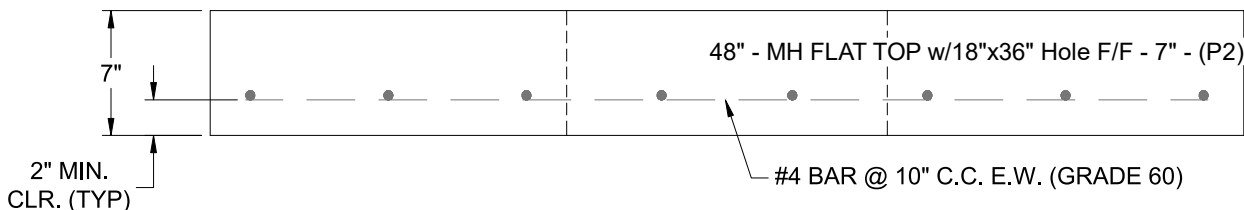
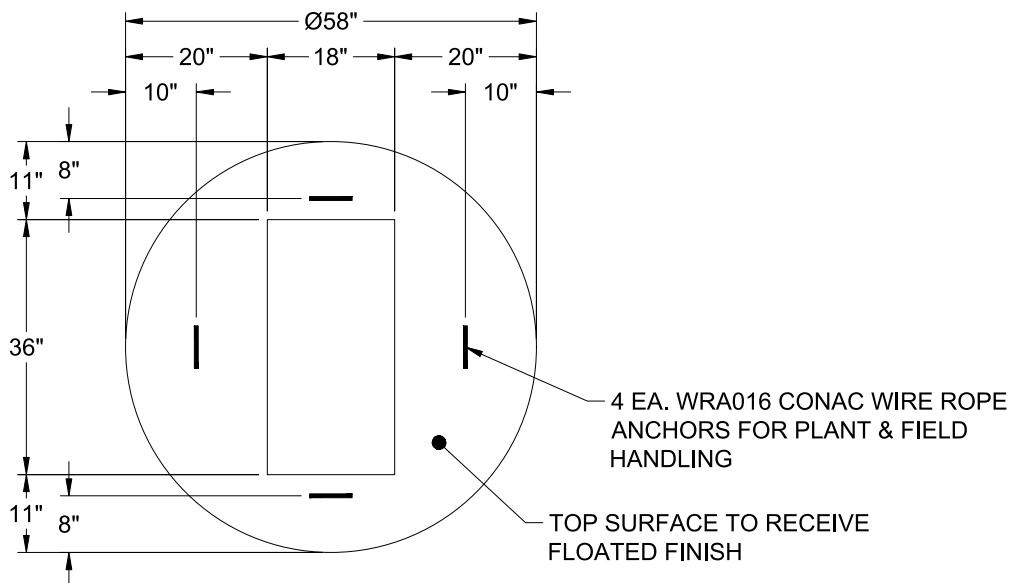
MH FLAT TOP w/18"x36" Hole F/F

- P3) 18" x 36" - CASTING HEIGHT - 5.5"
- P2) 48" - MH FLAT TOP w/18"x36" Hole F/F - 7"
- P1) 48" - MH BASE Custom Ht F/n - 27"
- 1) CASTING - HOE 580-LV F/G
- 1) 48" - Conseal CS-102 1.00"
- 1) 18" x 36" - Conseal CS-102 1.00"
- 1) Hole - 16

- 0 lb
- 1171 lb
- 3131 lb
- 514 lb
- 0 lb
- 0 lb
- 0 lb
- 0 lb

Structure Total: 4816 lb

- Structure Notes:
1. PER ASTM C-478 SPECIFICATIONS
 2. CONCRETE: 4,000 PSI AT 28 DAYS
 3. REINFORCEMENT: #4 BAR @ 10" C.C. E.W. (GRADE 60) - 2" MIN. REBAR CLEARANCE (TYP)
 4. HOE 580-LV FRAME & L-VANE GRATES SUPPLIED BY ICAST
 5. LIFTERS: 4 EA. WRA016 CONAC WIRE ROPE ANCHORS FOR PLANT & FIELD HANDLING
 6. TOP SURFACE TO RECEIVE FLOATED FINISH



Coating (Int):
 Coating (Ext):

Seam Up: Flat
 Seam Dn: Flat

Wall Thickness: 5"

Height (Ext): 7"

Weight (Net): 1171 lb
 Volume (Net): 0.3cu.yd