

Job Name: 25-4731 - Mantra Journey Dispensary  
 Job Location: Bardstown, KY 40004  
 Contractor: Hale Contracting

Plant: 100

5/15/2026 12:12:17 PM

Tech: Jared - A

PC: T. Ryan



**Structure ID: ST-1 (2)**

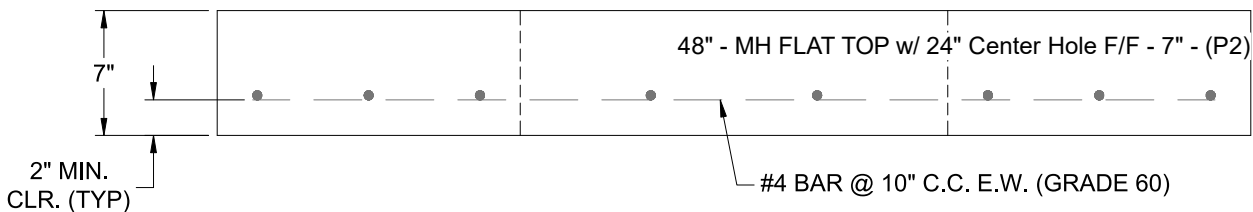
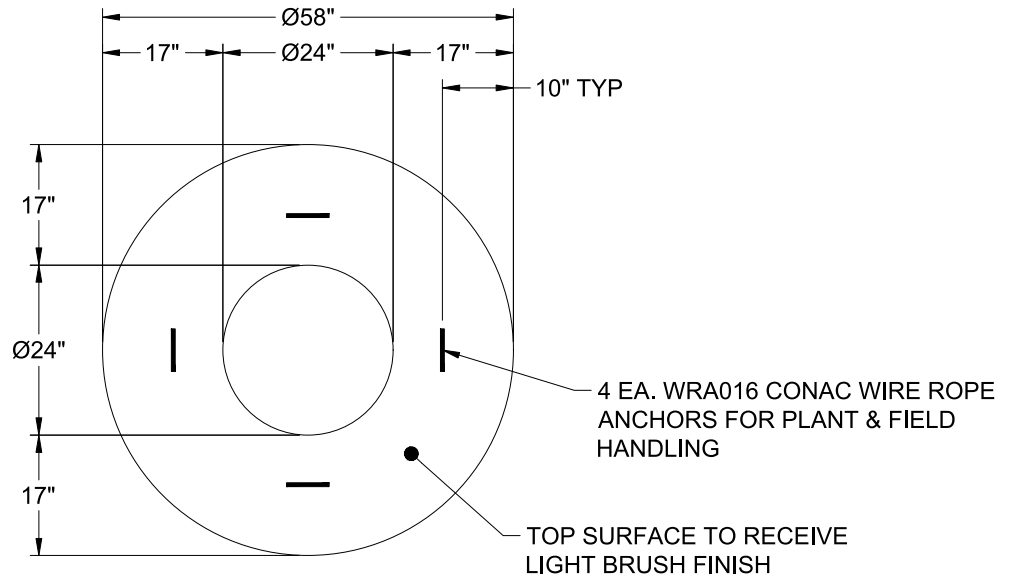
**P2 MH048LD07**

**MH FLAT TOP w/ 24" Center Hole F/F**

- P3) 24" - CASTING HEIGHT - 7"
- P2) 48" - MH FLAT TOP w/ 24" Center Hole F/F - 7"
- P1) 48" - MH BASE Custom Ht F/n - 28"
- 1) SECONDARY POUR - Weir Wall (48" X 8.4" X 4")
- 1) 48" - Conseal CS-102 1.00"
- 1) 24" - Conseal CS-102 1.00"
- 2) Hole - 24
- 2) Hole - 12

	0 lb
	1700 lb
	2789 lb
	140 lb
	0 lb
	0 lb
	0 lb
	0 lb
Structure Total:	4629 lb

- Structure Notes:
1. PER ASTM C-478 SPECIFICATIONS
  2. CONCRETE: 4,000 PSI AT 28 DAYS
  3. REINFORCEMENT: #4 BAR @ 10" C.C. E.W. (GRADE 60) - 2" MIN. REBAR CLEARANCE (TYP)
  4. HOE MC-420 FRAME & COVER "STORM" SUPPLIED BY ICAST
  5. LIFTERS: 4 EA. WRA016 CONAC WIRE ROPE ANCHORS FOR PLANT & FIELD HANDLING
  6. TOP SURFACE TO RECEIVE FLOATED FINISH



Coating (Int): Coating (Ext):	Seam Up: Flat Seam Dn: Flat	Wall Thickness: 5"	Height (Ext): 7"	Weight (Net): 1700 lb Volume (Net): 0.42cu.yd
----------------------------------	--------------------------------	--------------------	------------------	--