

Job Name: 25-4590 Uhlhorn Sewer Repairs
 Job Location: Evansville, IN
 Contractor: Bowen Engineering Corporation

Plant: Beaver Dam
 5/11/2026 10:20:34 AM

Tech: S. Felletter
 PC: A. Chambers



Structure ID: 100 (6)

P2 MH060TS15-48ECC-CDARED

MH TRANS. SLAB ECC w/ConBlock-CDA Red T/G

- P6) 24" - CASTING HEIGHT - 7"
- P5) 48" - ECC CONE w/ 24" HOLE, w/ConBlock-CDA Red F/G - 30"
- P4) 48" - MH RISER w/ConBlock-CDA Red T/G - 72"
- P3) 48" - MH RISER w/ConBlock-CDA Red T/G - 72"
- P2) 60" - MH TRANS. SLAB ECC w/ConBlock-CDA Red T/G - 15"
- P1) 60" - MH BASE Custom Ht, w/ConBlock-CDA Red T/n - 67"
- 1) JOINT WRAP - 0.065"x6"x50' CONSEAL CS212
- 1) JOINT WRAP PRIMER - CONSEAL CS-75 (1 gal.)
- 1) 60" - MH INVERT CHANNEL EWSU w/ConBlock-CDA Red - FULL HEIGHT
- 1) CASTING - HOE MC-315 F/C Sanitary
- 1) 60" - Conseal CS-102 1.00" (Double)
- 3) 48" - Conseal CS-102 1.00" (Double)
- 1) Kor-N-Seal2 - S206-30
- 1) Kor-N-Seal2 - S206-22L

0 lb
 1961 lb
 5030 lb
 5030 lb
 2204 lb
 9162 lb
 0 lb
 0 lb
 2962 lb
 258 lb
 0 lb
 0 lb
 6 lb
 6 lb

Structure Total: 26621 lb

Structure Notes:

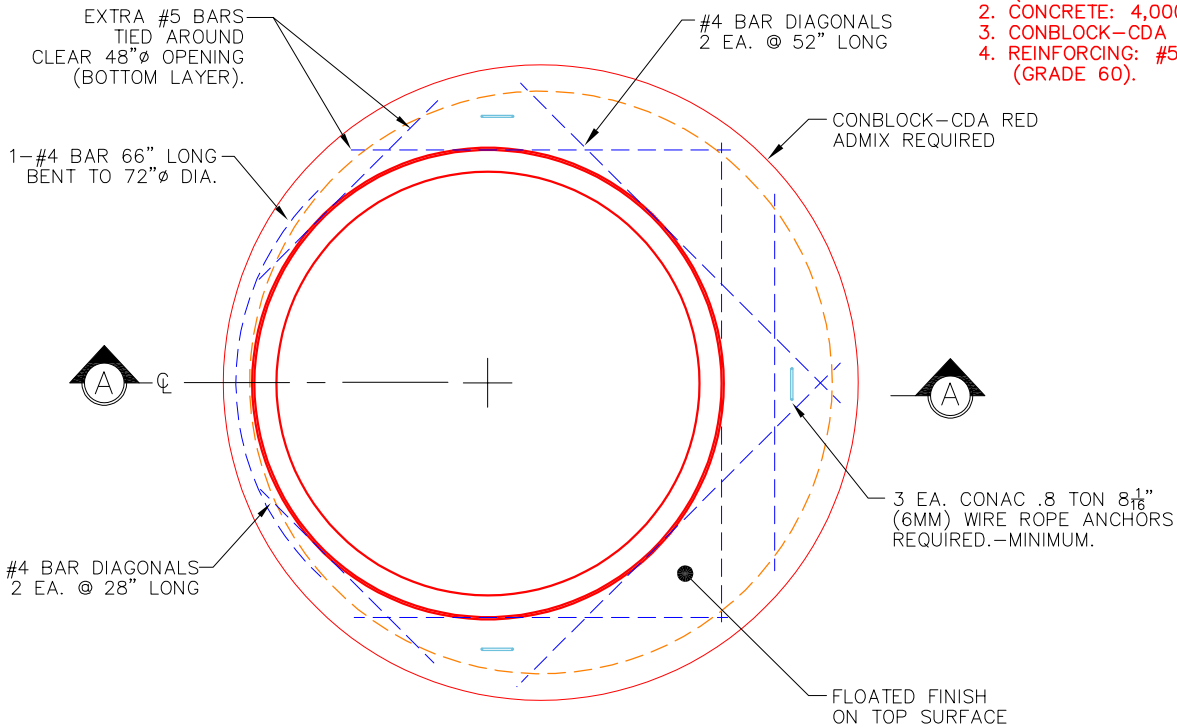
1. PER ASTM C478 SPECIFICATIONS.
2. CONCRETE = 4,000 PSI AT 28 DAYS.
3. CASTING BY ICAST (HOE MC-315 F/C "SANITARY").
4. NO STEPS.

REINFORCING PER ASTM A615 (GRADE 60).

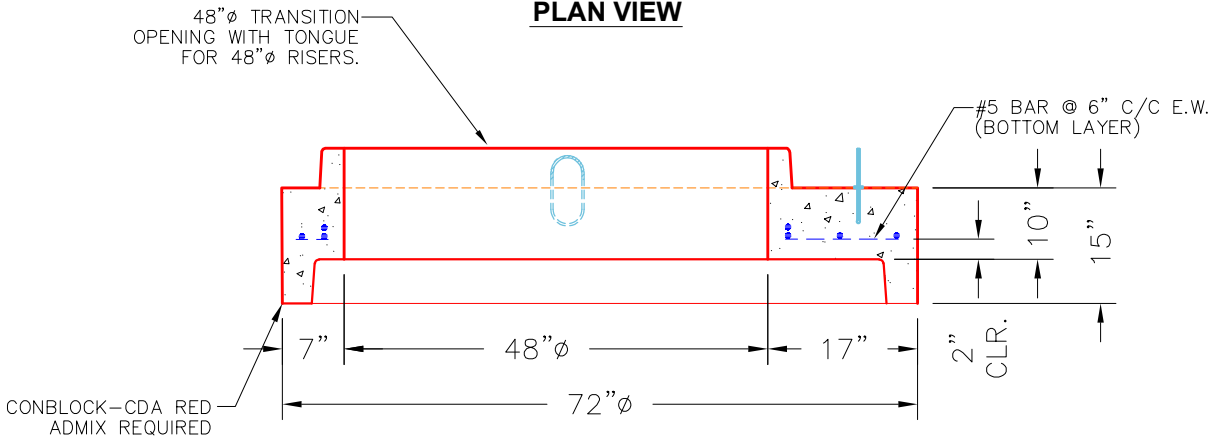
- TOP SLAB (As .31) #5 BARS AT 6" C.C.E.W.
- RISER/WALLS (As .18)
- FLOOR (As .37) #5 BARS AT 10" C.C.E.W.

NOTES:

1. MANUFACTURED TO ASTM C-478 (LATEST REVISION).
2. CONCRETE: 4,000 PSI AT 28 DAYS.
3. CONBLOCK-CDA RED ADMIXTURE REQUIRED.
4. REINFORCING: #5 BAR @ 6" C/C E.W. (GRADE 60).



PLAN VIEW



SECTION A-A

Coating (Int):
 Coating (Ext):

Seam Up: Tongue
 Seam Dn: Groove

Wall Thickness: 6"

Height (Ext): 15"

Weight (Net): 2204 lb
 Volume (Net): 0.56cu.yd