

Job Name: 25-3452 - Churchill Downs Skye Terrace Improvements
 Job Location: Louisville, KY 40208
 Contractor: Louisville Paving and Construction

Plant: 100
 4/30/2026 1:23:03 PM

Tech: Jared - F
 PC: J. Jarvis



Structure ID: S213

P3 MH060LD13

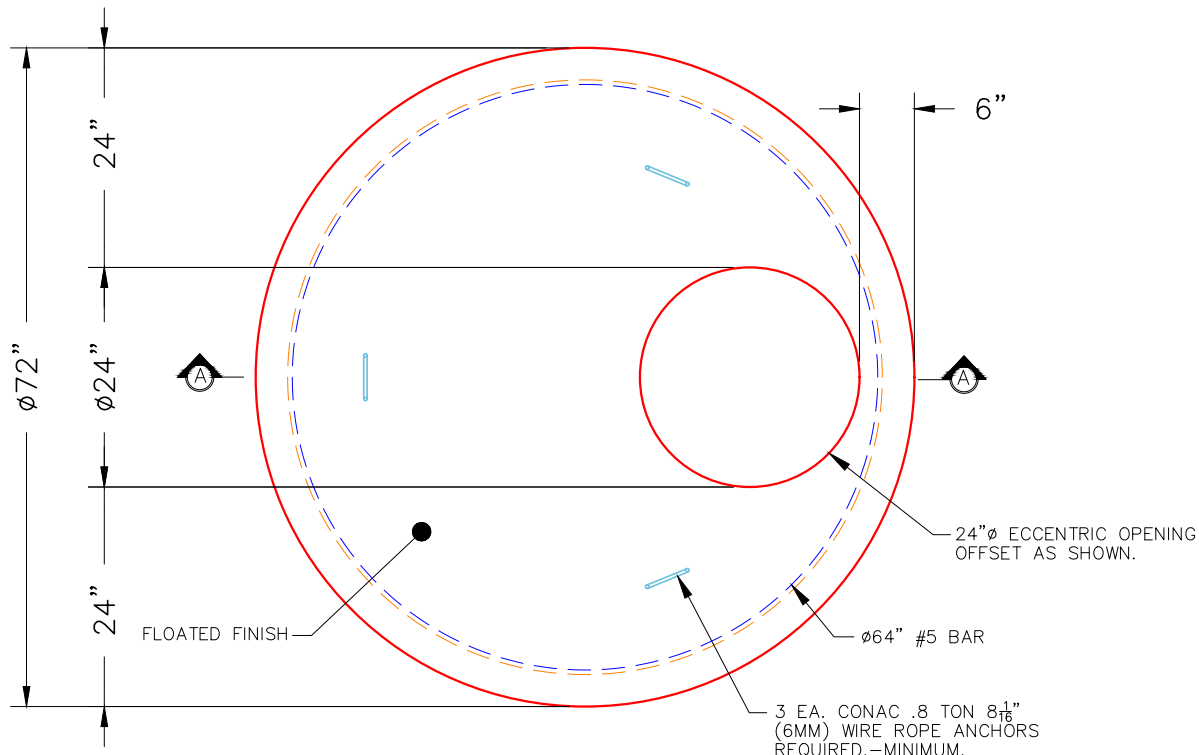
MH FLAT TOP w/ 24" ECC Hole F/G

- P5) 24" - CASTING HEIGHT - 7"
- P4) 24" - GRADE RING F/F - 4"
- P3) 60" - MH FLAT TOP w/ 24" ECC Hole F/G - 13"
- P2) 60" - MH RISER T/G - 36"
- P1) 60" - MH BASE Custom Ht T/n - 43"
- 1) CASTING - HOE MC-420 F/C Storm
- 2) 60" - Conseal CS-102 1.00"
- 2) Hole - 30
- 1) Hole - 16
- 7) MH Step ML-10-TDS-NCR - 10"

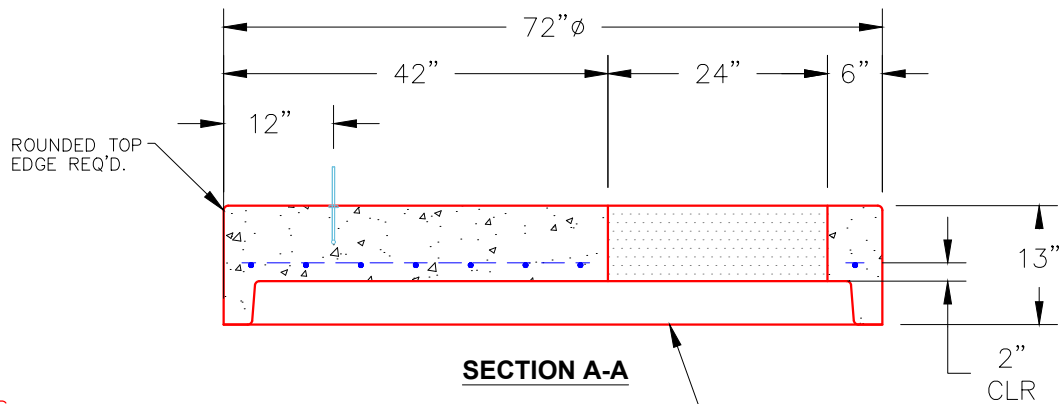
0 lb
 270 lb
 2869 lb
 3656 lb
 6482 lb
 340 lb
 0 lb
 0 lb
 0 lb
 0 lb
 0 lb
 Structure Total: 13617 lb

Structure Notes:
 1. PER ASTM C478 SPECIFICATIONS.
 2. CONCRETE = 4,000 PSI AT 28 DAYS.
 3. NO INVERT CHANNEL.
 4. CASTING BY ICAST (HOE MC-420 F/C STORM)

REINFORCING PER ASTM A615 (GRADE 60).
 - TOP SLAB (As .62) #5 BARS AT 6" C.C.E.W..
 - RISER/WALLS (As .18)
 - FLOOR (As .37) #5 BARS AT 10" C.C.E.W.



PLAN VIEW



SECTION A-A

NOTES:

- 1. MANUFACTURED TO ASTM C-478 (LATEST REVISION).
- 2. CONCRETE: 4,000 PSI AT 28 DAYS.
- 3. REINFORCING: #5 BAR @ 6" O.C. E.W. (GRADE 60).

Coating (Int):
 Coating (Ext):

Seam Up: Flat
 Seam Dn: Groove

Wall Thickness: 6"

Height (Ext): 13"

Weight (Net): 2869 lb
 Volume (Net): 0.73cu.yd