

Job Name: 26-1230 - Wheelwright WWTP & LS Improvements
 Job Location: Wheelwright, KY
 Contractor: Endesol, Inc.

Plant: 100

5/7/2026 6:25:31 PM

Tech: Jared - F

PC: E. Bradley



Structure ID: 5

P1 BX4266-06BAVF

BOX BASE 6inW, 6inF, Variable Ht F/n

P1) 42" x 66" - BOX BASE 6inW, 6inF, Variable Ht - 32"

- 1) SECONDARY POUR - WALLS
- 1) SECONDARY POUR - INTERNAL WALLS
- 3) Hole - 10
- 1) Hole - 12

5812 lb
 0 lb
 0 lb
 0 lb
 0 lb

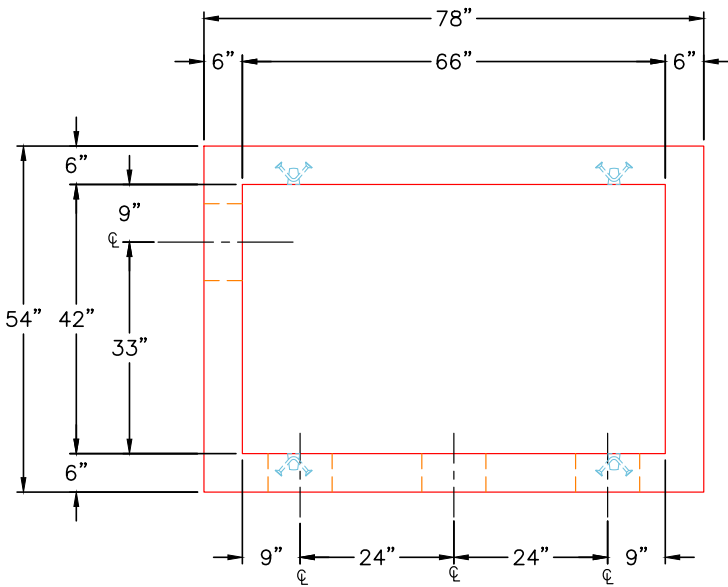
 Structure Total: 5812 lb

Structure Notes:

- 1. PER ASTM C913 SPECIFICATIONS.
- 2. CONCRETE = 4,000 PSI AT 28 DAYS.

REINFORCING PER ASTM A615 (GRADE 60).
 - WALLS (As .12) #4 BARS AT 12" C.C.E.W. (DOUBLE MAT)
 - FLOOR (As .12) #4 BARS AT 12" C.C.E.W. (DOUBLE MAT)

Rim: 981' Rim to Invert: 2.67' Slack: 0.04' Sump: 2' Step Position:

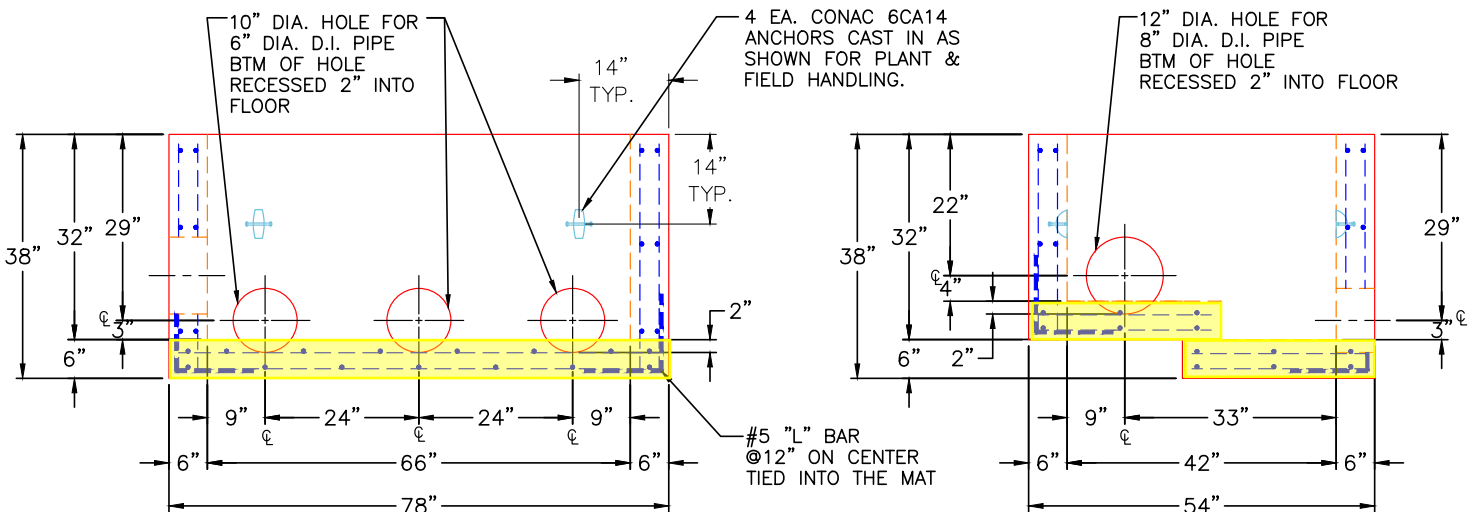


PLAN VIEW

GENERAL NOTES:

- 1. MANUFACTURED TO ASTM C-913 (LATEST REVISION).
- 2. CONCRETE: 4,000 PSI AT 28 DAYS.
- 3. REINFORCING: #4 BAR @ 12" E.W. O.C. DOUBLE MAT (GRADE 60).
- 4. WEIGHT:
 FIRST POUR - 2,340 LBS.
 SECOND POUR - 3,335 LBS.
 THIRD POUR - 1,345 LBS.
 TOTAL - 7,020 LBS.

FIRST POUR DRAWING



FRONT VIEW

LEFT VIEW

Coating (Int):
 Coating (Ext):

Seam Up: Flat
 Seam Dn: n/a

Wall Thickness: 6"
 Floor Height: 6"

Height (Int): 34"
 Height (Ext): 40"

Weight (Net): 6053 lb
 Volume (Net): 1.55cu.yd

Job Name: 26-1230 - Wheelwright WWTP & LS Improvements
 Job Location: Wheelwright, KY
 Contractor: Endesol, Inc.

Plant: 100

5/7/2026 6:25:31 PM

Tech: Jared - F

PC: E. Bradley



Structure ID: 5

P1 BX4266-06BAVF

BOX BASE 6inW, 6inF, Variable Ht F/n

P1) 42" x 66" - BOX BASE 6inW, 6inF, Variable Ht - 32"

- 1) SECONDARY POUR - WALLS
- 1) SECONDARY POUR - INTERNAL WALLS
- 3) Hole - 10
- 1) Hole - 12

5812 lb
 0 lb
 0 lb
 0 lb
 0 lb

 5812 lb

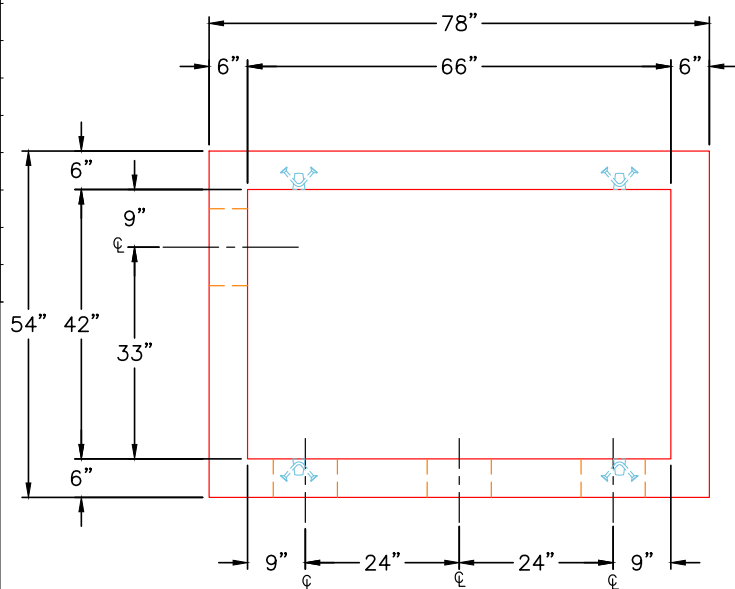
Structure Total:

Structure Notes:

- 1. PER ASTM C913 SPECIFICATIONS.
- 2. CONCRETE = 4,000 PSI AT 28 DAYS.

REINFORCING PER ASTM A615 (GRADE 60).
 - WALLS (As .12) #4 BARS AT 12" C.C.E.W. (DOUBLE MAT)
 - FLOOR (As .12) #4 BARS AT 12" C.C.E.W. (DOUBLE MAT)

Rim: 981' Rim to Invert: 2.67' Slack: 0.04" Sump: 2" Step Position:

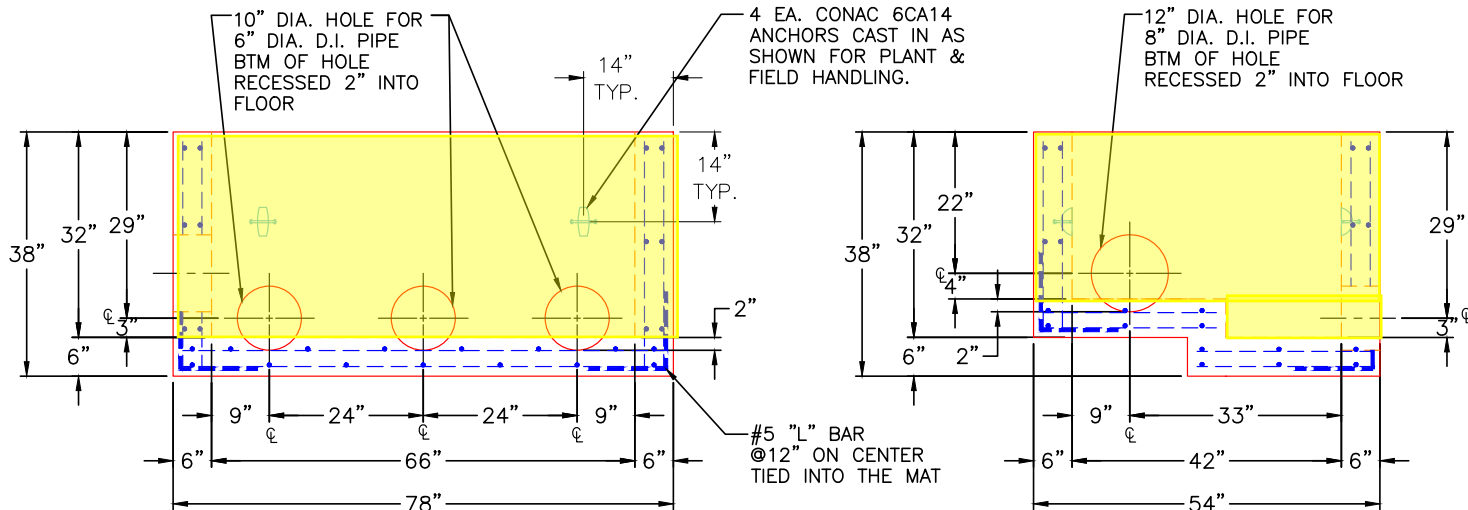


PLAN VIEW

GENERAL NOTES:

- 1. MANUFACTURED TO ASTM C-913 (LATEST REVISION).
- 2. CONCRETE: 4,000 PSI AT 28 DAYS.
- 3. REINFORCING: #4 BAR @ 12" E.W. O.C. DOUBLE MAT (GRADE 60).
- 4. WEIGHT:
 FIRST POUR - 2,340 LBS.
 SECOND POUR - 3,335 LBS.
 THIRD POUR - 1,345 LBS.
 TOTAL - 7,020 LBS.

SECOND POUR DRAWING



FRONT VIEW

LEFT VIEW

Coating (Int):
 Coating (Ext):

Seam Up: Flat
 Seam Dn: n/a

Wall Thickness: 6"
 Floor Height: 6"

Height (Int): 34"
 Height (Ext): 40"

Weight (Net): 6053 lb
 Volume (Net): 1.55cu.yd

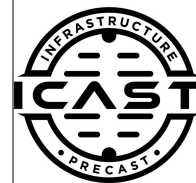
Job Name: 26-1230 - Wheelwright WWTP & LS Improvements
 Job Location: Wheelwright, KY
 Contractor: Endesol, Inc.

Plant: 100

Tech: Jared - F

5/7/2026 6:25:31 PM

PC: E. Bradley



Structure ID: 5

P1 BX4266-06BAVF

BOX BASE 6inW, 6inF, Variable Ht F/n

- P1) 42" x 66" - BOX BASE 6inW, 6inF, Variable Ht - 32"
- 1) SECONDARY POUR - WALLS
- 1) SECONDARY POUR - INTERNAL WALLS
- 3) Hole - 10
- 1) Hole - 12

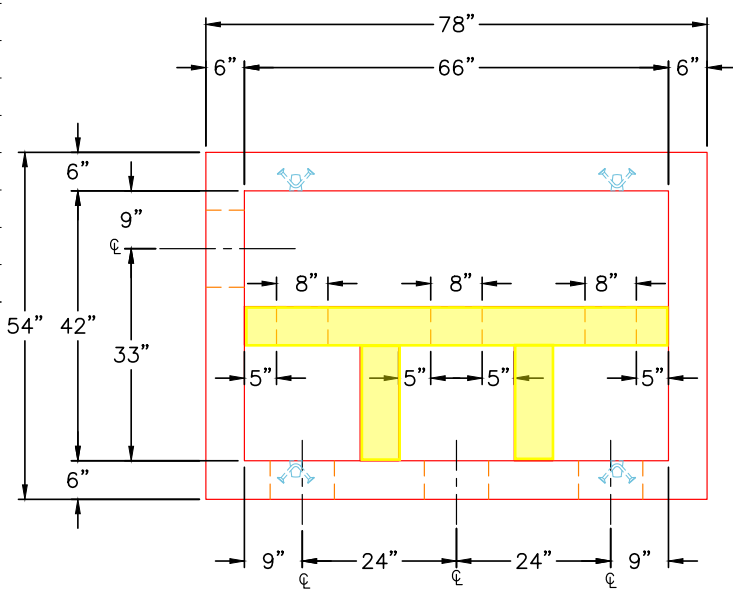
5812 lb
 0 lb
 0 lb
 0 lb
 0 lb

 Structure Total: 5812 lb

Structure Notes:

1. PER ASTM C913 SPECIFICATIONS.
 2. CONCRETE = 4,000 PSI AT 28 DAYS.
- REINFORCING PER ASTM A615 (GRADE 60).
 - WALLS (As .12) #4 BARS AT 12" C.C.E.W. (DOUBLE MAT)
 - FLOOR (As .12) #4 BARS AT 12" C.C.E.W. (DOUBLE MAT)

Rim: 981' Rim to Invert: 2.67' Slack: 0.04' Sump: 2' Step Position:

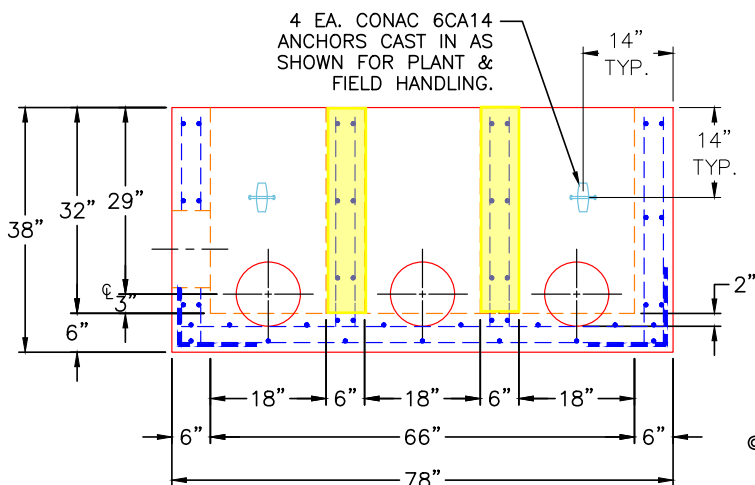


PLAN VIEW

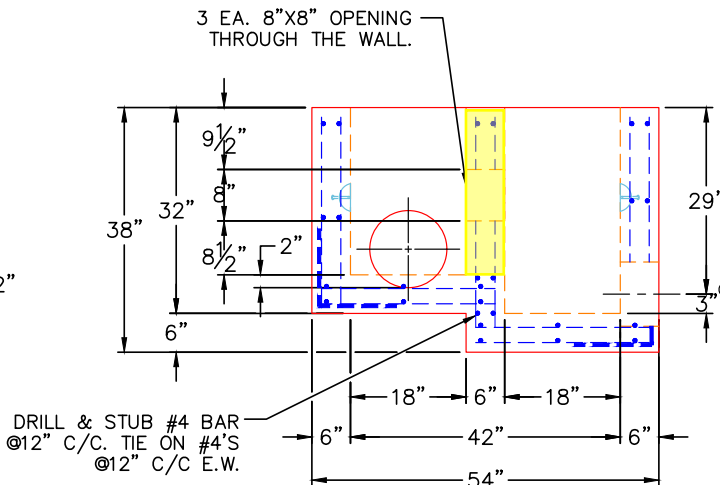
GENERAL NOTES:

1. MANUFACTURED TO ASTM C-913 (LATEST REVISION).
2. CONCRETE: 4,000 PSI AT 28 DAYS.
3. REINFORCING: #4 BAR @ 12" E.W. O.C. DOUBLE MAT (GRADE 60).
4. WEIGHT:
 FIRST POUR - 2,340 LBS.
 SECOND POUR - 3,335 LBS.
 THIRD POUR - 1,345 LBS.
 TOTAL - 7,020 LBS.

THIRD POUR DRAWING



FRONT VIEW



LEFT VIEW

Coating (Int):
 Coating (Ext):

Seam Up: Flat
 Seam Dn: n/a

Wall Thickness: 6"
 Floor Height: 6"

Height (Int): 34"
 Height (Ext): 40"

Weight (Net): 6053 lb
 Volume (Net): 1.55cu.yd