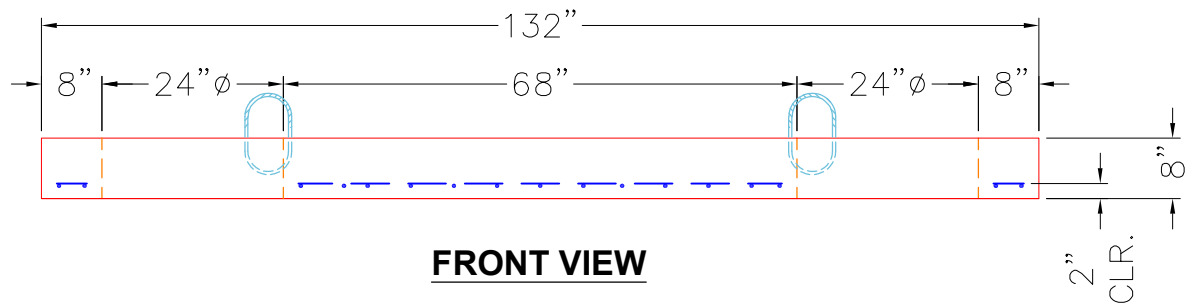



**TOP VIEW**



**FRONT VIEW**

**NOTES:**

1. PER ASTM C-890-13 LATEST REVISION. (H-20 TRAFFIC RATED DESIGN)
2. CONCRETE = 5,000 PSI AT 28 DAYS.
3. REINFORCING: #5 BAR @ 8" C/C E.W. (GRADE 60). PER ASTM A615

<b>PRODUCTION WORK ORDER</b>		PRODUCT I.D.: BX060120-06LD08	DESCRIPTION: 72" X 132" X 8" GREASE TRAP TOP SLAB	
	<b>QUALITY CONTROL CHECKLIST</b>	PRODUCT VIEW: RIGHT SIDE UP	CUSTOMER: INFINITY PIPELINE INC	
	<input type="checkbox"/> ALL DIMENSIONS CORRECT.	PLANT: BEAVER DAM, KY.	PROJECT: 1,000 GAL GREASE TRAP	
	<input type="checkbox"/> LIFTERS INSTALLED.	WEIGHT: 5,775 LBS.	STRUCTURE: QL1 OW1000	
	<input type="checkbox"/> HOLE LOCATION(S) CORRECT.	TOP SECTION JOINT: N/A	ORDER NO: 26-1790	
	<input type="checkbox"/> REINFORCING CORRECT.	BASE SECTION JOINT: N/A	PC: E. BRADLEY	DRAWING: S. FELLETTER
	<input type="checkbox"/> FLAT ON BOTTOM OF SLAB. <input type="checkbox"/> LIGHT BRUSHED FINISH. <input type="checkbox"/> SURFACE QUALITY ACCEPTABLE.	QC CHECK INITIALS:	DATE: 05/12/26	SCALE: NTS
			PG. 1 of 1	