

Job Name: 25-4279 - KYTC Christian Co (251031)  
 Job Location: Hopkinsville, KY  
 Contractor: CITCO Water

Plant: 100  
 5/8/2026 11:22:37 AM

Tech: Jared- F  
 PC: C. Goff



**Structure ID: FM**

**P2 MH060LD13SCDARED**

**MH FLAT TOP w/36"x42" Hatch w/ConBlock-CDA Red F/G**

- P2) 60" - MH FLAT TOP w/36"x42" Hatch w/ConBlock-CDA Red F/G - 13"
- P1) 60" - MH BASE Custom Ht, w/ConBlock-CDA Red T/n - 59"
- 1) JOINT WRAP PRIMER - CONSEAL CS-75 (1 gal.)
- 1) JOINT WRAP - 0.065"x6"x50' CONSEAL CS212
- 1) ADMIXTURE CONBLOCK CDA RED
- 1) 60" - Conseal CS-102 1.00" (Double)
- 2) Hole - 8

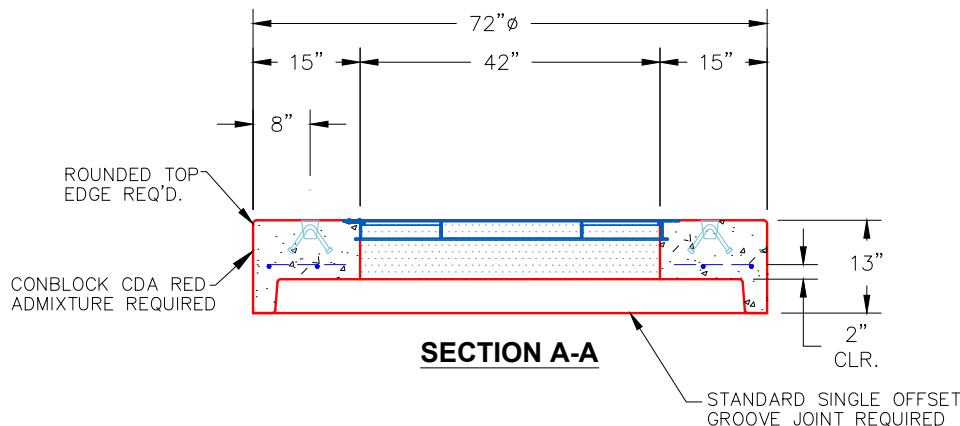
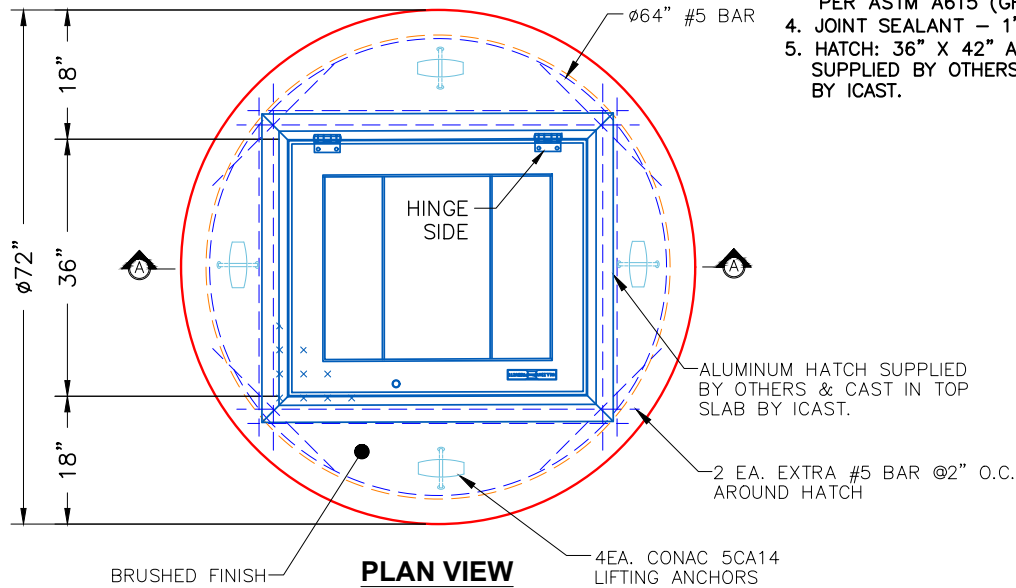
1993 lb  
 8842 lb  
 0 lb  
 0 lb  
 0 lb  
 0 lb  
 0 lb  
 0 lb  
 -----  
 Structure Total: 10834 lb

**Structure Notes:**  
 1. PER ASTM C478 SPECIFICATIONS.  
 2. CONCRETE = 4,000 PSI AT 28 DAYS.  
 3. NO STEPS AND NO INVERT CHANNEL.  
 4. ADMIXTURE = CONBLOCK CDA RED.  
 5. ALUMINUM HATCH SUPPLIED BY OTHERS & CAST IN TOP SLAB BY ICAST. CENTERED LOCATION TO BE VERIFIED.

REINFORCING PER ASTM A615 (GRADE 60).  
 - TOP SLAB (As .62) #5 BARS AT 6" C.C.E.W.  
 - RISER/WALLS (As .18)  
 - FLOOR (As .31) #5 BARS AT 12" C.C.E.W.

**GENERAL NOTES:**

1. MANUFACTURED TO ASTM C-478 (LATEST REVISION).
2. CONCRETE: 4,000 PSI AT 28 DAYS.
3. CONBLOCK CDA RED ADMIXTURE REQUIRED.
4. REINFORCMENT: #5 BAR @ 6" C.C.E.W. PER ASTM A615 (GRADE 60).
4. JOINT SEALANT - 1" CS-102- DOUBLE
5. HATCH: 36" X 42" ALUMINUM HATCH SUPPLIED BY OTHERS & CAST IN TOP SLAB BY ICAST.



Coating (Int): Coating (Ext):	Seam Up: Flat Seam Dn: Groove	Wall Thickness: 6"	Height (Ext): 13"	Weight (Net): 1993 lb Volume (Net): 0.51cu.yd
----------------------------------	----------------------------------	--------------------	-------------------	--