

Job Name: 26-1763 - MSU Commons Vault
 Job Location: Murray, KY
 Contractor: West Kentucky Industrial & Plumbing

Plant: 100
 5/22/2026 5:03:53 PM

Tech: Jared - F
 PC: T. Lewis



Structure ID: QL2 MV

P1 BX048108-08BAVF

BOX BASE 8inW, 8inF, Variable Ht F/n

- P3) 24" x 24" - HATCH (CAST FLUSH) - 3"
- P2) 48" x 108" - BX FLAT TOP 8"W w/24"x24" HATCH - 8"
- P1) 48" x 108" - BOX BASE 8inW, 8inF, Variable Ht - 72"
- 1) JOINT WRAP - 0.065"x6"x50' CONSEAL CS212
- 1) JOINT WRAP PRIMER - CONSEAL CS-75 (1 gal.)
- 1) HATCH (Alum.) - HALLIDAY W1S 24"x24"
- 1) SECONDARY POUR - WALLS
- 1) 24" x 24" - Conseal CS-102 1.00" (Double)
- 2) Hole - 8

100 lb
 4941 lb
 21887 lb
 0 lb
 0 lb
 46 lb
 0 lb
 0 lb
 0 lb

Structure Total: 26973 lb

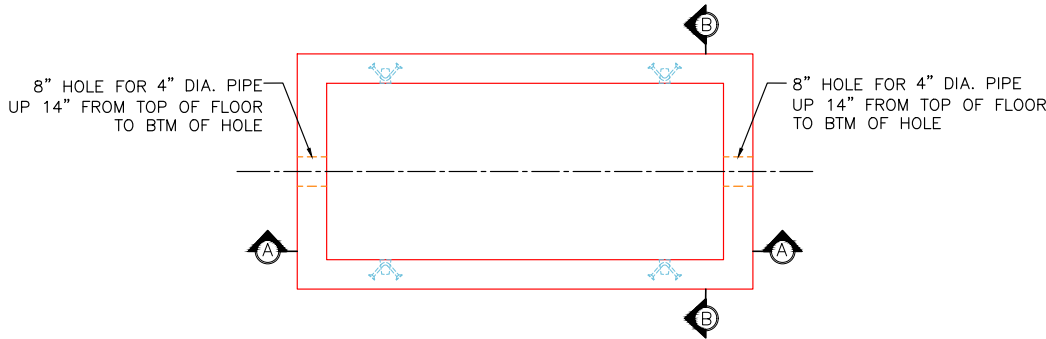
Structure Notes:

1. PER ASTM C913 SPECIFICATIONS.
2. CONCRETE = 4,000 PSI AT 28 DAYS.
3. HATCH PROVIDED BY ICAST (HALLIDAY W1S 24"x24")
-
- REINFORCING PER ASTM A615 (GRADE 60).
- TOP SLAB #5 BAR @ 6" C.C.E.W.
- WALLS #5 BAR @ 12" C.C.E.W.
- FLOOR #5 BAR @ 12" C.C.E.W.

Rim: 6.667' Rim to Invert: 5.507' Slack: 0" Sump: 13.92" Step Position:

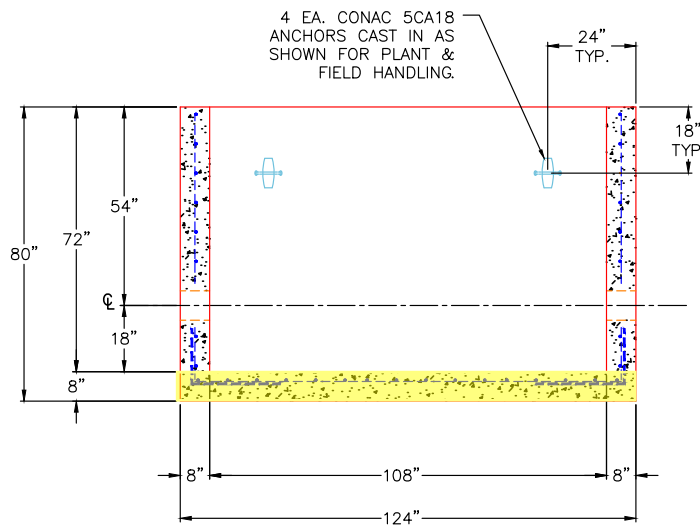
GENERAL NOTES:

1. MANUFACTURED TO ASTM C-913 (LATEST REVISION).
2. CONCRETE: 4,000 PSI AT 28 DAYS.
3. REINFORCING: #5 BAR @ 12" E.W. O.C. (GRADE 60).
4. WEIGHT:
 FIRST POUR - 5,327 LBS
 SECOND POUR - 16,560 LBS.
 TOTAL - 21,887 LBS.

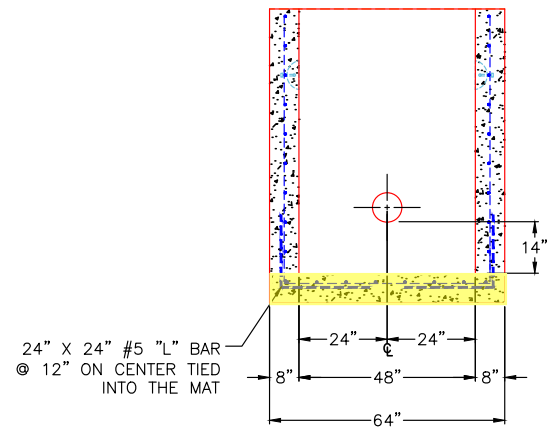


PLAN VIEW
 (RIGHT-SIDE-UP VIEW)

FIRST POUR DRAWING



SECTION A-A
 (RIGHT-SIDE-UP VIEW)



SECTION B-B
 (RIGHT-SIDE-UP VIEW)

Coating (Int):
 Coating (Ext):

Seam Up: Flat
 Seam Dn: n/a

Wall Thickness: 8"
 Floor Height: 8"

Height (Int): 72"
 Height (Ext): 80"

Weight (Net): 21887 lb
 Volume (Net): 5.59cu.yd

Job Name: 26-1763 - MSU Commons Vault
 Job Location: Murray, KY
 Contractor: West Kentucky Industrial & Plumbing

Plant: 100
 5/22/2026 5:03:53 PM

Tech: Jared - F
 PC: T. Lewis



Structure ID: QL2 MV

P1 BX048108-08BAVF

BOX BASE 8inW, 8inF, Variable Ht F/n

- P3) 24" x 24" - HATCH (CAST FLUSH) - 3"
- P2) 48" x 108" - BX FLAT TOP 8"W w/24"x24" HATCH - 8"
- P1) 48" x 108" - BOX BASE 8inW, 8inF, Variable Ht - 72"
- 1) JOINT WRAP - 0.065"x6"x50' CONSEAL CS212
- 1) JOINT WRAP PRIMER - CONSEAL CS-75 (1 gal.)
- 1) HATCH (Alum.) - HALLIDAY W1S 24"x24"
- 1) SECONDARY POUR - WALLS
- 1) 24" x 24" - Conseal CS-102 1.00" (Double)
- 2) Hole - 8

100 lb
 4941 lb
 21887 lb
 0 lb
 0 lb
 46 lb
 0 lb
 0 lb
 0 lb

Structure Total: 26973 lb

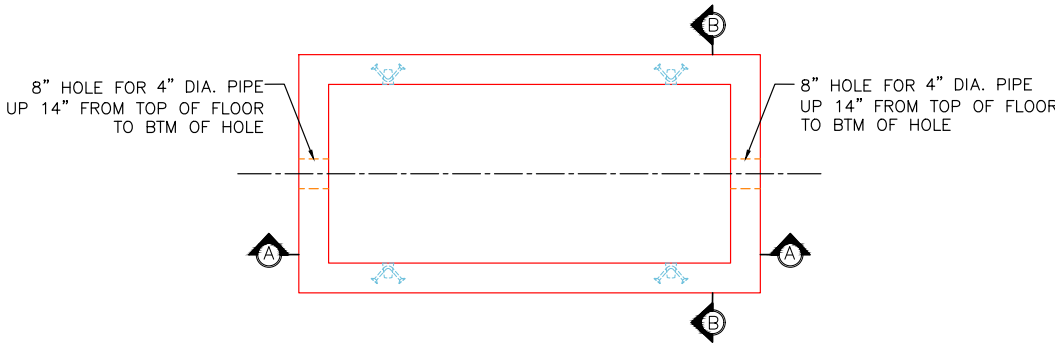
Structure Notes:

1. PER ASTM C913 SPECIFICATIONS.
2. CONCRETE = 4,000 PSI AT 28 DAYS.
3. HATCH PROVIDED BY ICAST (HALLIDAY W1S 24"x24")
- REINFORCING PER ASTM A615 (GRADE 60).
 - TOP SLAB #5 BAR @ 6" C.C.E.W.
 - WALLS #5 BAR @ 12" C.C.E.W.
 - FLOOR #5 BAR @ 12" C.C.E.W.

Rim: 6.667' Rim to Invert: 5.507' Slack: 0" Sump: 13.92" Step Position:

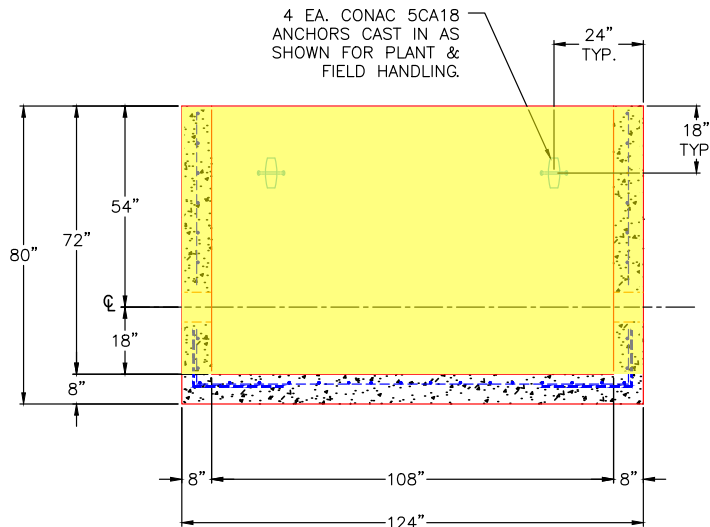
GENERAL NOTES:

1. MANUFACTURED TO ASTM C-913 (LATEST REVISION).
2. CONCRETE: 4,000 PSI AT 28 DAYS.
3. REINFORCING: #5 BAR @ 12" E.W. O.C. (GRADE 60).
4. WEIGHT:
 FIRST POUR - 5,327 LBS.
 SECOND POUR - 16,560 LBS.
 TOTAL - 21,887 LBS.

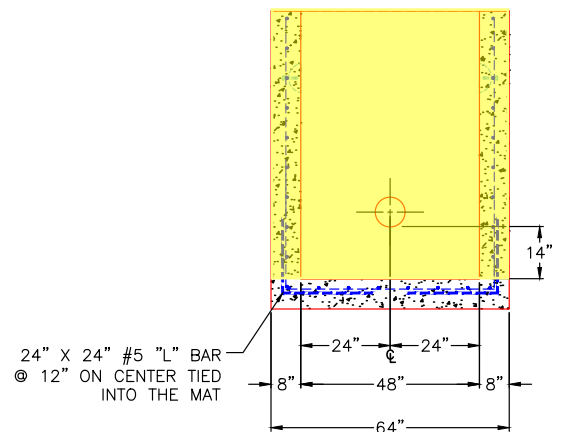


PLAN VIEW
 (RIGHT-SIDE-UP VIEW)

SECOND POUR DRAWING



SECTION A-A
 (RIGHT-SIDE-UP VIEW)



SECTION B-B
 (RIGHT-SIDE-UP VIEW)

Coating (Int):
 Coating (Ext):

Seam Up: Flat
 Seam Dn: n/a

Wall Thickness: 8"
 Floor Height: 8"

Height (Int): 72"
 Height (Ext): 80"

Weight (Net): 21887 lb
 Volume (Net): 5.59cu.yd