

Job Name: 26-1230 - Wheelwright WWTP & LS Improvements
 Job Location: Wheelwright, KY
 Contractor: Endesol, Inc.

Plant: 100

5/7/2026 6:25:30 PM

Tech: Jared - F

PC: E. Bradley



Structure ID: 3

P1 BX118118-08BAVF

BOX BASE 8inW, 8inF, Variable Ht F/n

P1) 118" x 118" - BOX BASE 8inW, 8inF, Variable Ht - 72"

- 1) Conseal CS-102 1.00" (Double)
- 1) SECONDARY POUR - WALLS
- 1) Hole - 12
- 1) Hole - 16

36203 lb
 0 lb
 0 lb
 0 lb
 0 lb

 Structure Total: 36203 lb

Structure Notes:

- 1. PER ASTM C913 SPECIFICATIONS.
- 2. CONCRETE = 4,000 PSI AT 28 DAYS.

REINFORCING PER ASTM A615 (GRADE 60).
 - WALLS (As .12) #5 BARS AT 8" C.C.E.W.
 - FLOOR (As .12) #5 BARS AT 8" C.C.E.W.

NOTE:

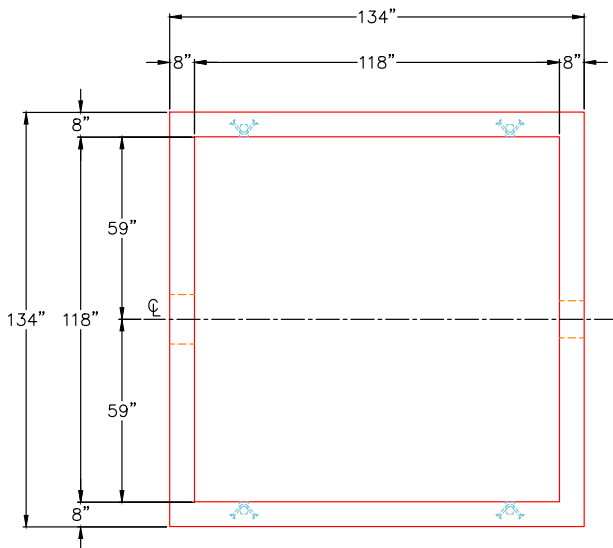
- a) Fiberglass baffles & 15" Dia. PVC stilling well are to be installed by others.
- b) Stainless steel plate with V-Notch to be provided by others.

Rim: 977.82' Rim to Invert: 4.06' Slack: 0" Sump: 23.28" Step Position:

GENERAL NOTES:

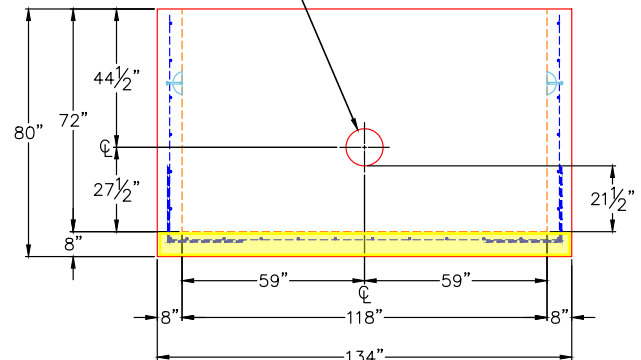
- 1. MANUFACTURED TO ASTM C-913 (LATEST REVISION).
- 2. CONCRETE: 4,000 PSI AT 28 DAYS.
- 3. REINFORCING: #5 BAR @ 8" E.W. O.C. (GRADE 60).
- 4. WEIGHT:
 FIRST POUR - 12,053 LBS.
 SECOND POUR - 24,150 LBS.
 TOTAL - 36,203 LBS.

FIRST POUR DRAWING



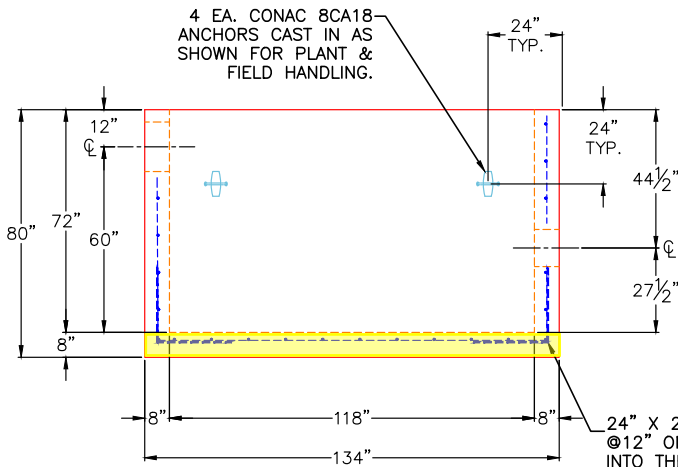
PLAN VIEW

12" HOLE FOR 8" DIA. DI PIPE
 UP 21.5" FROM TOP OF FLOOR TO BTM OF HOLE



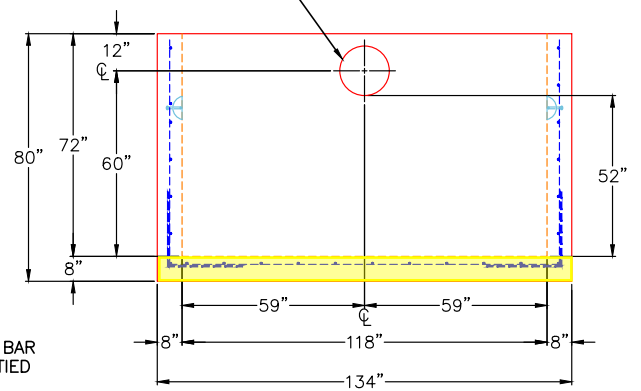
RIGHT VIEW

4 EA. CONAC 8CA18 ANCHORS CAST IN AS SHOWN FOR PLANT & FIELD HANDLING.



FRONT VIEW

16" HOLE FOR 12" DIA. DI PIPE
 UP 52" FROM TOP OF FLOOR TO BTM OF HOLE



LEFT VIEW

Coating (Int):
 Coating (Ext):

Seam Up: Flat
 Seam Dn: n/a

Wall Thickness: 8"
 Floor Height: 8"

Height (Int): 72"
 Height (Ext): 80"

Weight (Net): 36203 lb
 Volume (Net): 9.25cu.yd

Job Name: 26-1230 - Wheelwright WWTP & LS Improvements
 Job Location: Wheelwright, KY
 Contractor: Endesol, Inc.

Plant: 100

5/7/2026 6:25:30 PM

Tech: Jared - F

PC: E. Bradley



Structure ID: 3

P1 BX118118-08BAVF

BOX BASE 8inW, 8inF, Variable Ht F/n

P1) 118" x 118" - BOX BASE 8inW, 8inF, Variable Ht - 72"

- 1) Conseal CS-102 1.00" (Double)
- 1) SECONDARY POUR - WALLS
- 1) Hole - 12
- 1) Hole - 16

36203 lb
 0 lb
 0 lb
 0 lb
 0 lb

 Structure Total: 36203 lb

Structure Notes:

- 1. PER ASTM C913 SPECIFICATIONS.
- 2. CONCRETE = 4,000 PSI AT 28 DAYS.

REINFORCING PER ASTM A615 (GRADE 60).
 - WALLS (As .12) #5 BARS AT 8" C.C.E.W.
 - FLOOR (As .12) #5 BARS AT 8" C.C.E.W.

NOTE:

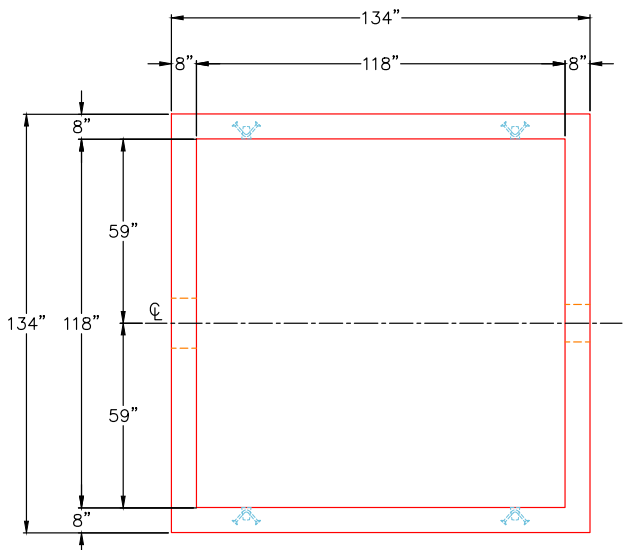
- a) Fiberglass baffles & 15" Dia. PVC stilling well are to be installed by others.
- b) Stainless steel plate with V-Notch to be provided by others.

Rim: 977.82' Rim to Invert: 4.06' Slack: 0" Sump: 23.28" Step Position:

GENERAL NOTES:

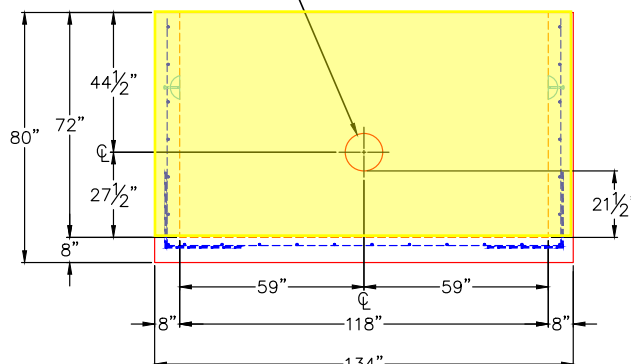
- 1. MANUFACTURED TO ASTM C-913 (LATEST REVISION).
- 2. CONCRETE: 4,000 PSI AT 28 DAYS.
- 3. REINFORCING: #5 BAR @ 8" E.W. O.C. (GRADE 60).
- 4. WEIGHT:
 FIRST POUR - 12,053 LBS.
 SECOND POUR - 24,150 LBS.
 TOTAL - 36,203 LBS.

SECOND POUR DRAWING



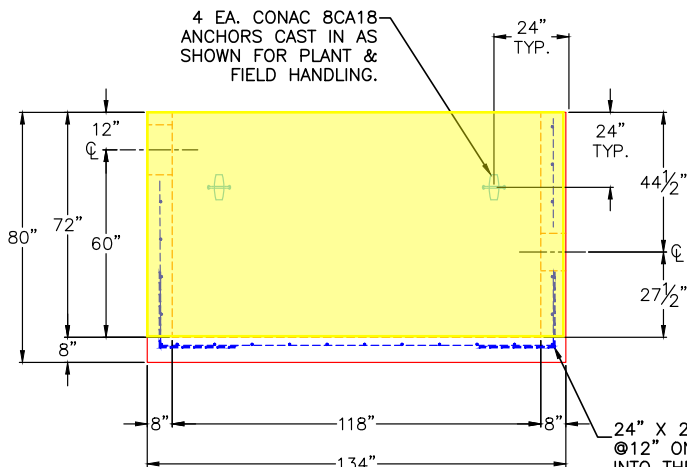
PLAN VIEW

12" HOLE FOR 8" DIA. DI PIPE
 UP 21.5" FROM TOP OF FLOOR TO BTM OF HOLE



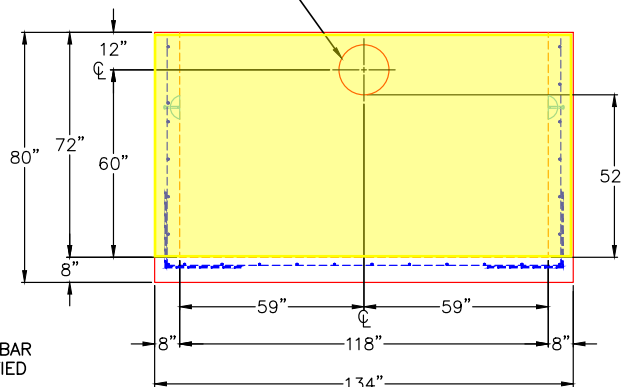
RIGHT VIEW

4 EA. CONAC 8CA18 ANCHORS CAST IN AS SHOWN FOR PLANT & FIELD HANDLING.



FRONT VIEW

16" HOLE FOR 12" DIA. DI PIPE
 UP 52" FROM TOP OF FLOOR TO BTM OF HOLE



LEFT VIEW

Coating (Int):
 Coating (Ext):

Seam Up: Flat
 Seam Dn: n/a

Wall Thickness: 8"
 Floor Height: 8"

Height (Int): 72"
 Height (Ext): 80"

Weight (Net): 36203 lb
 Volume (Net): 9.25cu.yd