

Job Name: 25-2397B - Sandy Springs Section 2 Sanitary
 Job Location: Elizabethtown, KY 42701
 Contractor: Gary Clifford

Plant: 100

Tech: J. Horsley

5/27/2026 12:38:46 PM

PC: T. Lewis



Structure ID: MH 1

P2 CFB

18" x 12" x 84" Footer Block F/n

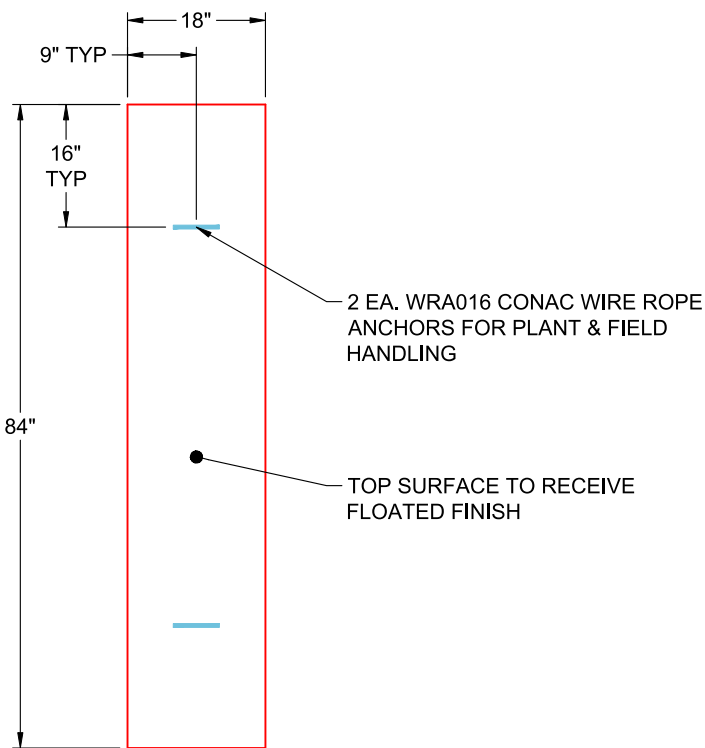
P6) 24" - CASTING HEIGHT - 7"	0 lb
P5) 48" - ECC CONE w/ 24" HOLE F/G - 30"	2050 lb
P4) 72" - MH Transition Slab 48" Hole T/G - 15"	3864 lb
P3) 72" - MH RISER Custom Ht T/F - 64"	8207 lb
P2) 72" - 18" x 12" x 84" Footer Block F/n - 12" (2 Ea.)	3046 lb (1523 lb Ea.)
P1) 72" - P.I.P. By Others - Pipe Backfill F/n - 31"	0 lb
1) JOINT WRAP - 0.065"x6"x50' CONSEAL CS212	0 lb
1) JOINT WRAP PRIMER - CONSEAL CS-75 (1 gal.)	0 lb
1) CASTING - HOE MC-315 F/C Sanitary	258 lb
1) 72" - Conseal CS-102 1.00" (Double)	0 lb
1) 48" - Conseal CS-102 1.00" (Double)	0 lb
1) 24" - Conseal CS-102 1.00" (Double)	0 lb
2) DOGHOUSE - 62 x 19	0 lb
1) PSX - 12-08 DD (DBL Bands)	8 lb
9) MH Step ML-10-TDS-NCR - 10"	0 lb
Structure Total:	17425 lb

Structure Notes:

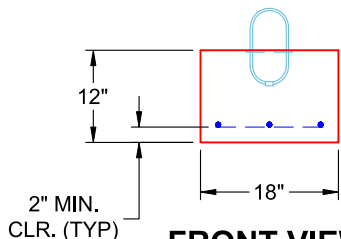
1. PER ASTM C-913 SPECIFICATIONS
2. CONCRETE: 4,000 PSI AT 28 DAYS
3. REINFORCEMENT: #5 BAR @ 12" C.C. E.W. (GRADE 60) - 2" MIN. REBAR CLEARANCE (TYP)
4. LIFTERS: 2 EA. WRA016 CONAC WIRE ROPE ANCHORS FOR PLANT & FIELD HANDLING
5. TOP SURFACE TO RECEIVE FLOATED FINISH

Rim: 689.3' Rim to Invert: 12.69' Slack: 0.28" Sump: 7" Step Position: 270°

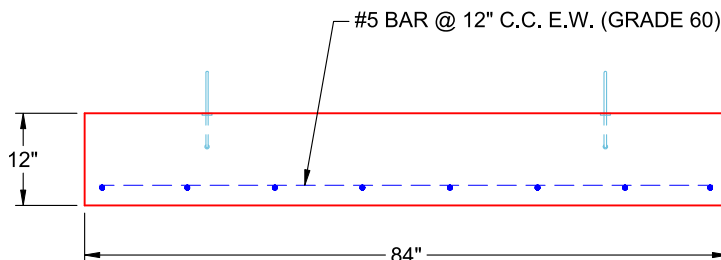
2 FOOTER BLOCKS REQUIRED FOR MH 1



**PLAN VIEW
(RIGHT SIDE UP)**



**FRONT VIEW
(RIGHT SIDE UP)**



**SIDE VIEW
(RIGHT SIDE UP)**