

Job Name: 24-1164 Paddy's Run Flood PS
 Job Location: Louisville, Ky.
 Contractor: Core & Main LP (Lou)

Plant: Beaver Dam, Ky.
 5/18/2026 11:42:52 AM

Tech: S. Felletter
 PC:



Structure ID: MH 3 (2+08)

P2 MH048LD12ECC

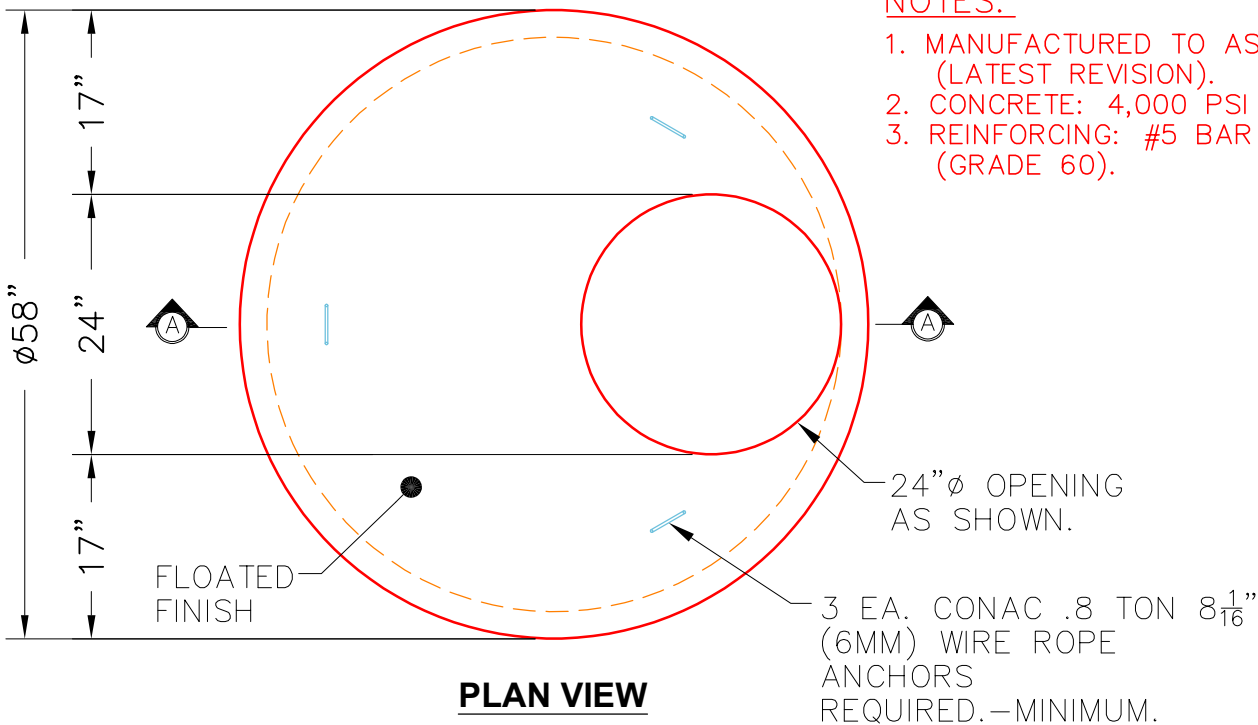
MH FLAT TOP w/ 24" ECC Hole F/G

- P3) 24" - CASTING HEIGHT - 7"
- P2) 48" - MH FLAT TOP w/ 24" ECC Hole F/G - 12"
- P1) 48" - MH BASE Custom Ht T/n - 39"
- 1) 48" - STORM INVERT CHANNEL - 1/4 HEIGHT
- 1) JOINT WRAP - 0.065"x6"x50' CONSEAL CS212
- 1) JOINT WRAP PRIMER - CONSEAL CS-75 (1 gal.)
- 1) Chimney Seal - Trelleborg FlexRib Chimney Seal
- 1) CASTING - HOE WT-420-MSD F/C Storm
- 1) 48" - Conseal CS-102 1.00" (Double)
- 1) 24" - Conseal CS-102 1.00" (Double)
- 2) PSX - 18M DD
- 1) PSX - 12-06 NYLO
- 3) MH Step ML-10-TDS-NCR - 10"

0 lb
 1561 lb
 3789 lb
 1075 lb
 0 lb
 0 lb
 10 lb
 340 lb
 0 lb
 0 lb
 16 lb
 8 lb
 0 lb

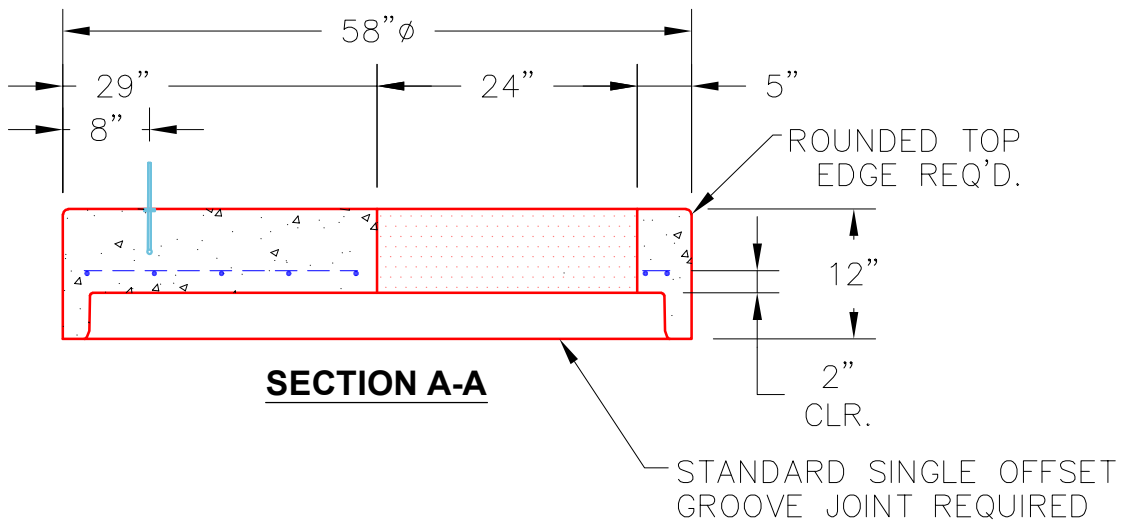
 Structure Total: 6799 lb

Structure Notes: 1. PER ASTM C478 & MSD SPECIFICATIONS.
 2. CONCRETE = 5,000 PSI AT 28 DAYS.
 3. CASTING BY ICST (HOE MC-420).
 REINFORCING PER ASTM A615 (GRADE 60).
 - CONE (As .12).
 - RISER/WALLS (As .12).
 - FLOOR (As .31) #5 BARS AT 12" C.C.E.W.



NOTES:

1. MANUFACTURED TO ASTM C-478 (LATEST REVISION).
2. CONCRETE: 4,000 PSI AT 28 DAYS.
3. REINFORCING: #5 BAR @ 6" C.C. E.W. (GRADE 60).



Coating (Int): Coating (Ext):	Seam Up: Flat Seam Dn: Groove	Wall Thickness: 5"	Height (Ext): 12"	Weight (Net): 1561 lb Volume (Net): 0.42cu.yd
----------------------------------	----------------------------------	--------------------	-------------------	--