

Job Name: 26-2131 ADS Zaxby's
 Job Location: Paris, TN
 Contractor: ADS Advanced Drainage Systems, Inc.

Plant: Beaver Dam
 5/20/2026 10:38:55 AM

Tech: S. Felletter
 PC: T. Lewis



Structure ID: A1

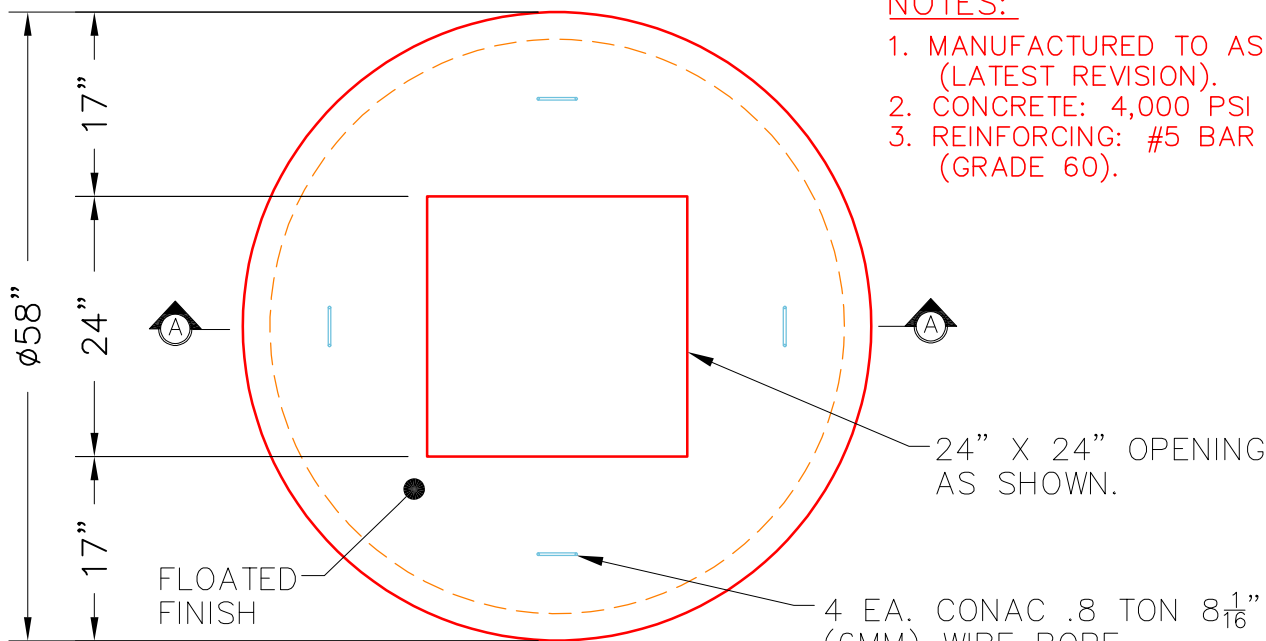
P4 MH048LD12-24SQ

MH FLAT TOP w/24"x24" Hole F/G

- P5) 24" x 24" - CASTING HEIGHT - 4"
- P4) 48" - MH FLAT TOP w/24"x24" Hole F/G - 12"
- P3) 48" - MH RISER SPECIAL T/G - 66"
- P2) 48" - MH RISER Custom Ht T/G - 41"
- P1) 48" - MH BASE T/h - 18"
- 1) JOINT WRAP - 0.065"x6"x50' CONSEAL CS212
- 1) JOINT WRAP PRIMER - CONSEAL CS-75 (1 gal.)
- 1) ASSEMBLY REQUIRED
- 1) CASTING - HOE 280T F/G
- 3) 48" - Conseal CS-102 1.00" (Double)
- 1) 24" x 24" - Conseal CS-102 1.00" (Double)
- 1) Hole - 26
- 1) Hole - 24

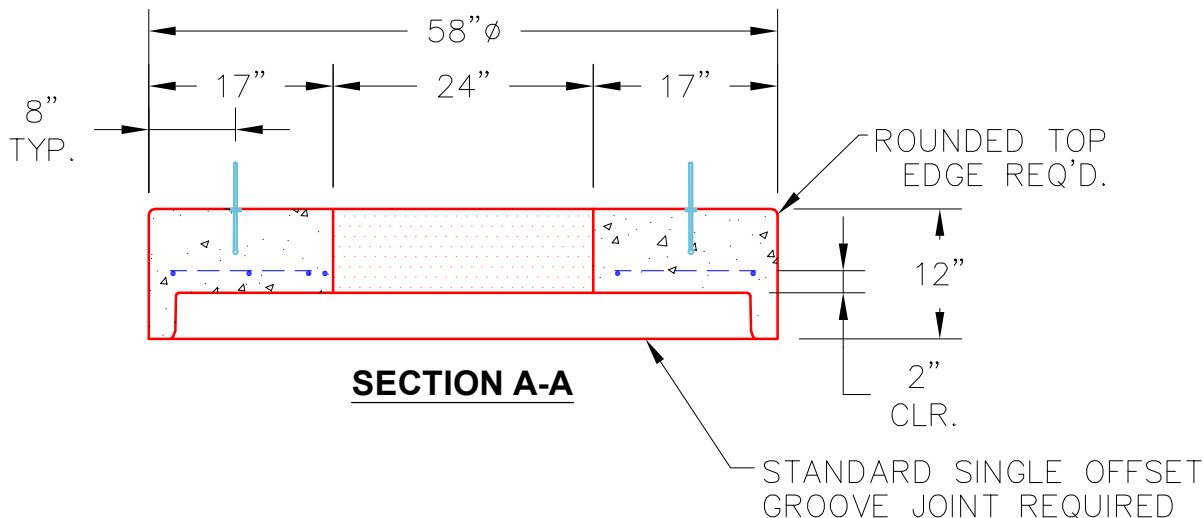
- | | |
|--|--|
| <ul style="list-style-type: none"> 0 lb 1500 lb 4180 lb 2864 lb 2588 lb 0 lb 0 lb 0 lb 182 lb 0 lb 0 lb 0 lb 0 lb 0 lb | <p>Structure Notes:</p> <ol style="list-style-type: none"> 1. PER ASTM C478 SPECIFICATIONS. 2. CONCRETE = 4,000 PSI AT 28 DAYS. 3. NO INVERT CHANNEL. 4. CASTING BY ICAST (HOE 280T F/G). 5. P2 & P3 RISERS TO BE MECHANICALLY ATTACHED BEFORE INSTALL. 6. LIFTING ANCHORS TO BE INSTALLED ON THE OUTSIDE OF THE STRUCTURE. <p>REINFORCING PER ASTM A615 (GRADE 60).
 - TOP SLAB (As .62) #5 BARS AT 6" C.C.E.W.
 - RISER/WALLS (As .12).
 - FLOOR (As .31) #5 BARS AT 12" C.C.E.W.</p> |
|--|--|

Structure Total: 11314 lb



NOTES:

1. MANUFACTURED TO ASTM C-478 (LATEST REVISION).
2. CONCRETE: 4,000 PSI AT 28 DAYS.
3. REINFORCING: #5 BAR @ 6" C.C. E.W. (GRADE 60).



Coating (Int): Coating (Ext):	Seam Up: Flat Seam Dn: Groove	Wall Thickness: 5"	Height (Ext): 12"	Weight (Net): 1500 lb Volume (Net): 0.37cu.yd
----------------------------------	----------------------------------	--------------------	-------------------	--