

|   |                      |                 |  |
|---|----------------------|-----------------|--|
| Job Name: 26-1699 - ECTC Culinary Kitchen | Plant: 100           | Tech: Jared - A |  |
| Job Location: Elizabethtown, KY           | 5/20/2026 8:22:31 AM | PC: M. Sullivan |  |
| Contractor: Advanced Mechanical LLC       |                      |                 |  |

**Structure ID: 1 GT2500**

**P1 BX072144-06W06F-VF**

**BOX BASE 6inW, 6inF, Variable Ht F/n**

|   |                 |
|---|-----------------|
| P3) 24" - CASTING HEIGHT - 7"   | 0 lb            |
| P2) 72" x 144" - CB FLAT TOP 6"W w/(2) 24" HOLES (Grease Trap) F/F - 8" | 8190 lb         |
| P1) 72" x 144" - BOX BASE 6inW, 6inF, Variable Ht F/n - 72"             | 22925 lb        |
| 1) SECONDARY POUR - Base Walls  | 0 lb            |
| 1) SECONDARY POUR - 6" Thick Baffle Wall                                | 2481 lb         |
| 2) CASTING - HOE MC-375 F/C Grease                                      | 542 lb          |
| 1) 72" x 144" - Conseal CS-102 1.00" (Double)                           | 0 lb            |
| 1) 24" - Conseal CS-102 1.00" (Double)                                  | 0 lb            |
| 2) PSX - 16M NYLO   | 16 lb           |
| <b>Structure Total:</b>   | <b>34154 lb</b> |

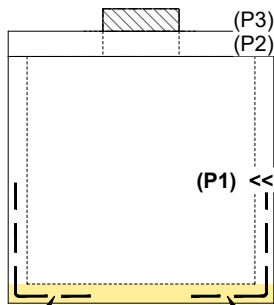
- Structure Notes:**
- PER ASTM C-890-13 SPECIFICATIONS
  - CONCRETE: 4,500 PSI AT 28 DAYS
  - REINFORCEMENT: #5 BAR @ 8" C.C. E.W. (GRADE 60) - 2" MIN. REBAR CLEARANCE (TYP)
  - NO STEPS
  - 2 EA. HOE MC-375 FRAMES & COVERS "GREASE" SUPPLIED BY ICAST
  - WET STICK 24" X 36" #5 L-BAR SPACED @ 12" C.C. E.W. (GRADE 60) OUT OF FLOOR FOR WALL POUR TIE-IN (SEE L-BAR DETAIL)

**FIRST POUR (FLOOR): 6,598 LBS**  
**SECOND POUR (WALLS): 16,327 LBS**  
**THIRD POUR (BAFFLE WALL): 2,481 LBS**

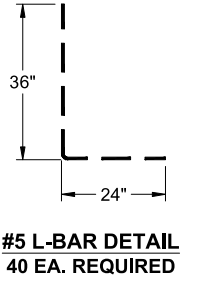
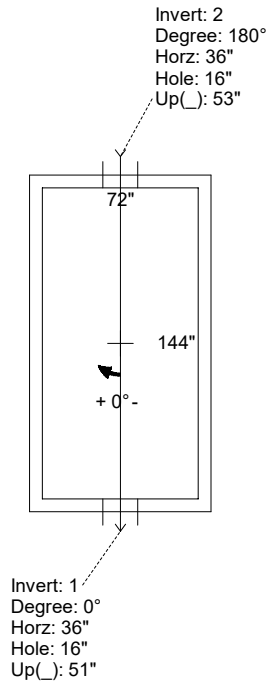
Rim: 7.25' Rim to Invert: 2.833' Slack: 0" Sump: 53.004" Step Position:

| Position | Elev   | Angle | Ext. (cw) | Pipe          | Pipe OD | Connector    | Hole | Horz Size | Up ( ) | Offset |
|----------|--------|-------|-----------|---------------|---------|--------------|------|-----------|--------|--------|
| Invert 1 | 4.417' | 0°    | 42"       | 12" PVC SDR35 | 12.5"   | PSX 16M NYLO | 16"  | 16"       | 51"    | 0"     |
| Invert 2 | 4.583' | 180°  | 42"       | 12" PVC SDR35 | 12.5"   | PSX 16M NYLO | 16"  | 16"       | 53"    | 0"     |
| Invert 3 |        |       |           |               |         |              |      |           |        |        |

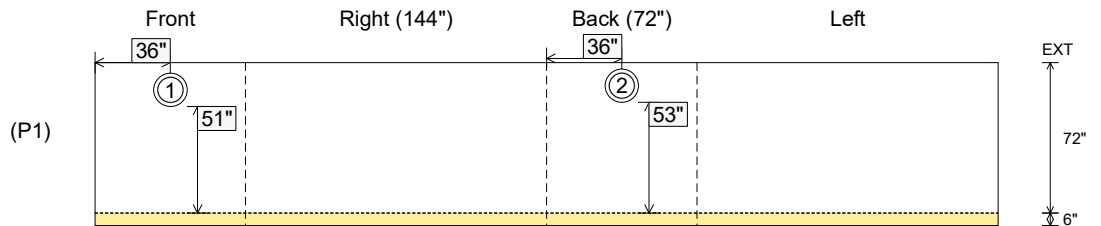
**RIGHT-SIDE UP VIEW (int. dimensions)**



WET STICK 24" X 36" #5 L-BARS @ 12" C.C. E.W. (GRADE 60) OUT OF FLOOR FOR WALL POUR TIE-IN



**INSIDE WALL DIMENSIONS**



|                |               |                    |                   |                         |
|----------------|---------------|--------------------|-------------------|-------------------------|
| Coating (Int): | Seam Up: Flat | Wall Thickness: 6" | Height (Int): 72" | Weight (Net): 22925 lb  |
| Coating (Ext): | Seam Dn: n/a  | Floor Height: 6"   | Height (Ext): 78" | Volume (Net): 5.86cu.yd |

Job Name: 26-1699 - ECTC Culinary Kitchen  
 Job Location: Elizabethtown, KY  
 Contractor: Advanced Mechanical LLC

Plant: 100

5/20/2026 8:22:31 AM

Tech: Jared - A

PC: M. Sullivan



**Structure ID: 1 GT2500**

**P1 BX072144-06W06F-VF**

**BOX BASE 6inW, 6inF, Variable Ht F/n**

- P3) 24" - CASTING HEIGHT - 7"
- P2) 72" x 144" - CB FLAT TOP 6"W w/(2) 24" HOLES (Grease Trap) F/F - 8"
- P1) 72" x 144" - BOX BASE 6inW, 6inF, Variable Ht F/n - 72"
- 1) SECONDARY POUR - Base Walls
- 1) SECONDARY POUR - 6" Thick Baffle Wall
- 2) CASTING - HOE MC-375 F/C Grease
- 1) 72" x 144" - Conseal CS-102 1.00" (Double)
- 1) 24" - Conseal CS-102 1.00" (Double)
- 2) PSX - 16M NYLO

0 lb  
 8190 lb  
 22925 lb  
 0 lb  
 2481 lb  
 542 lb  
 0 lb  
 0 lb  
 16 lb  
 -----  
 Structure Total: 34154 lb

Structure Notes:

1. PER ASTM C-890-13 SPECIFICATIONS
2. CONCRETE: 4,500 PSI AT 28 DAYS
3. REINFORCEMENT: #5 BAR @ 8" C.C. E.W. (GRADE 60) - 2" MIN. REBAR CLEARANCE (TYP)
4. NO STEPS
5. 2 EA. HOE MC-375 FRAMES & COVERS "GREASE" SUPPLIED BY ICAST
6. PLACE STRIP OF CS-231 1" BUTYL PRIOR TO WALL POUR TO CREATE WATERTIGHT SEAL
7. LIFTERS: 4 EA. 6CA14 CONAC A-ANCHORS FOR PLANT & FIELD HANDLING - INSTALLED IN 90° & 270° WALLS, MIN. 16" FROM TOP OF WALLS

**FIRST POUR (FLOOR): 6,598 LBS**

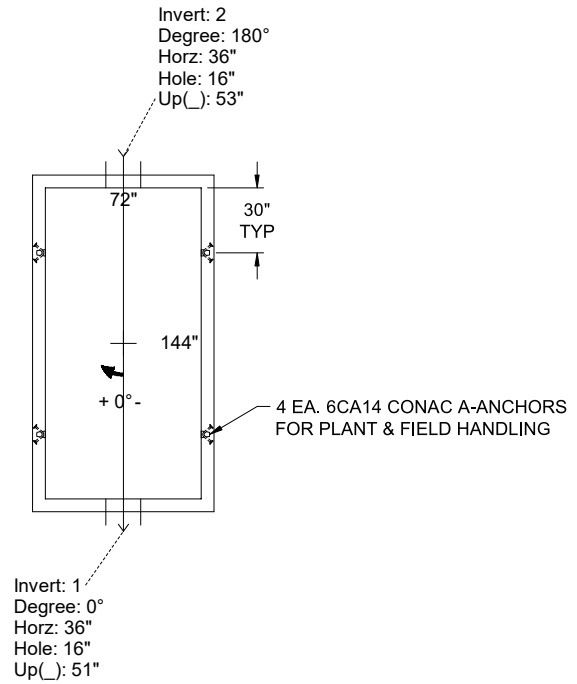
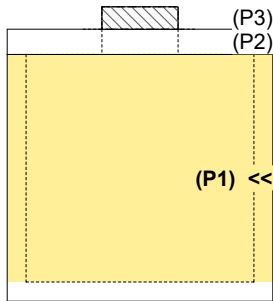
**SECOND POUR (WALLS): 16,327 LBS**

**THIRD POUR (BAFFLE WALL): 2,481 LBS**

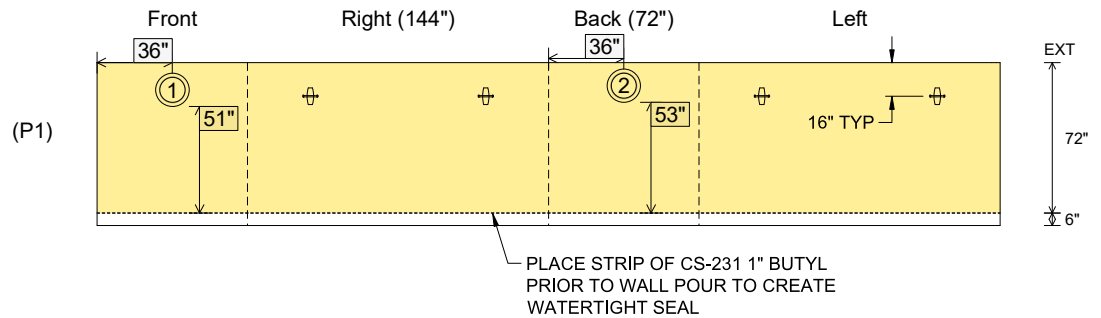
Rim: 7.25' Rim to Invert: 2.833' Slack: 0" Sump: 53.004" Step Position:

| Position | Elev   | Angle | Ext. (cw) | Pipe          | Pipe OD | Connector    | Hole | Horz Size | Up ( ) | Offset |
|----------|--------|-------|-----------|---------------|---------|--------------|------|-----------|--------|--------|
| Invert 1 | 4.417' | 0°    | 42"       | 12" PVC SDR35 | 12.5"   | PSX 16M NYLO | 16"  | 16"       | 51"    | 0"     |
| Invert 2 | 4.583' | 180°  | 42"       | 12" PVC SDR35 | 12.5"   | PSX 16M NYLO | 16"  | 16"       | 53"    | 0"     |
| Invert 3 |        |       |           |               |         |              |      |           |        |        |

**RIGHT-SIDE UP VIEW (int. dimensions)**



**INSIDE WALL DIMENSIONS**



Coating (Int):  
 Coating (Ext):

Seam Up: Flat  
 Seam Dn: n/a

Wall Thickness: 6"  
 Floor Height: 6"

Height (Int): 72"  
 Height (Ext): 78"

Weight (Net): 22925 lb  
 Volume (Net): 5.86cu.yd

Job Name: 26-1699 - ECTC Culinary Kitchen  
 Job Location: Elizabethtown, KY  
 Contractor: Advanced Mechanical LLC

Plant: 100

5/20/2026 8:22:31 AM

Tech: Jared - A

PC: M. Sullivan



**Structure ID: 1 GT2500**

**P1 BX072144-06W06F-VF**

**BOX BASE 6inW, 6inF, Variable Ht F/n**

- P3) 24" - CASTING HEIGHT - 7"
- P2) 72" x 144" - CB FLAT TOP 6"W w/(2) 24" HOLES (Grease Trap) F/F - 8"
- P1) 72" x 144" - BOX BASE 6inW, 6inF, Variable Ht F/n - 72"
- 1) SECONDARY POUR - Base Walls
- 1) SECONDARY POUR - 6" Thick Baffle Wall
- 2) CASTING - HOE MC-375 F/C Grease
- 1) 72" x 144" - Conseal CS-102 1.00" (Double)
- 1) 24" - Conseal CS-102 1.00" (Double)
- 2) PSX - 16M NYLO

0 lb  
 8190 lb  
 22925 lb  
 0 lb  
 2481 lb  
 542 lb  
 0 lb  
 0 lb  
 16 lb  
 -----  
 Structure Total: 34154 lb

Structure Notes:

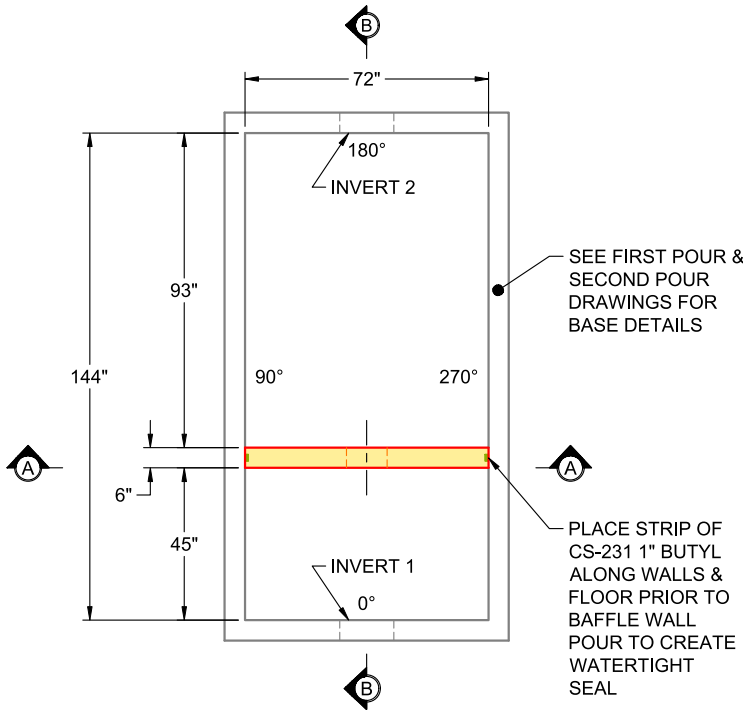
1. PER ASTM C-890-13 SPECIFICATIONS
2. CONCRETE: 4,500 PSI AT 28 DAYS
3. REINFORCEMENT: #4 BAR @ 12" C.C. E.W. (GRADE 60) - 2" MIN. REBAR CLEARANCE (TYP)
4. PLACE STRIP OF CS-231 1" BUTYL PRIOR TO BAFFLE WALL POUR TO CREATE WATERTIGHT SEAL
5. DRILL & DOWEL #4 BAR @ 12" C.C. E.W. (GRADE 60) INTO BASE FLOOR FOR BAFFLE WALL POUR TIE-IN - MIN. 4" PENETRATION INTO FLOOR

**FIRST POUR (FLOOR): 6,598 LBS**  
**SECOND POUR (WALLS): 16,327 LBS**  
**THIRD POUR (BAFFLE WALL): 2,481 LBS**

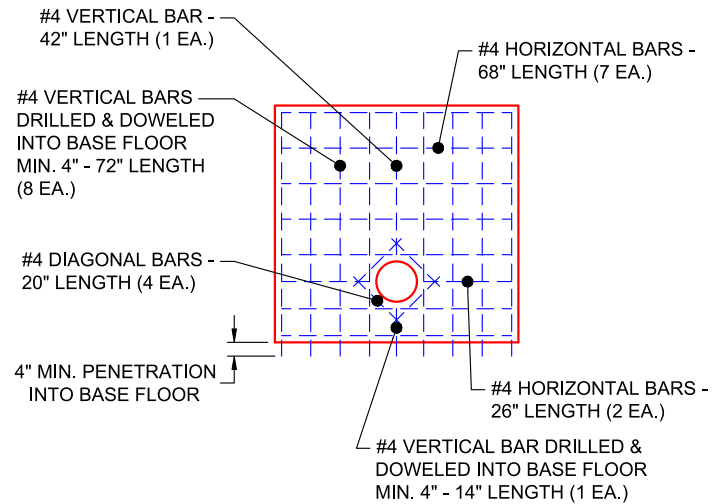
Structure Total: 34154 lb

Rim: 7.25' Rim to Invert: 2.833' Slack: 0" Sump: 53.004" Step Position:

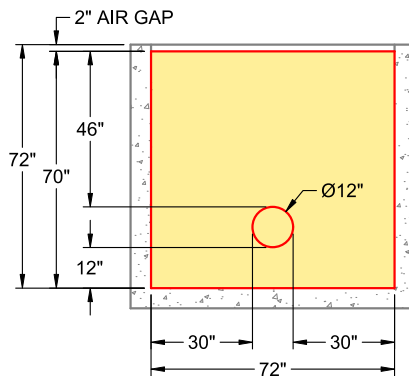
| Position | Elev   | Angle | Ext. (cw) | Pipe          | Pipe OD | Connector    | Hole | Horz Size | Up (L) | Offset |
|----------|--------|-------|-----------|---------------|---------|--------------|------|-----------|--------|--------|
| Invert 1 | 4.417' | 0°    | 42"       | 12" PVC SDR35 | 12.5"   | PSX 16M NYLO | 16"  | 16"       | 51"    | 0"     |
| Invert 2 | 4.583' | 180°  | 42"       | 12" PVC SDR35 | 12.5"   | PSX 16M NYLO | 16"  | 16"       | 53"    | 0"     |
| Invert 3 |        |       |           |               |         |              |      |           |        |        |



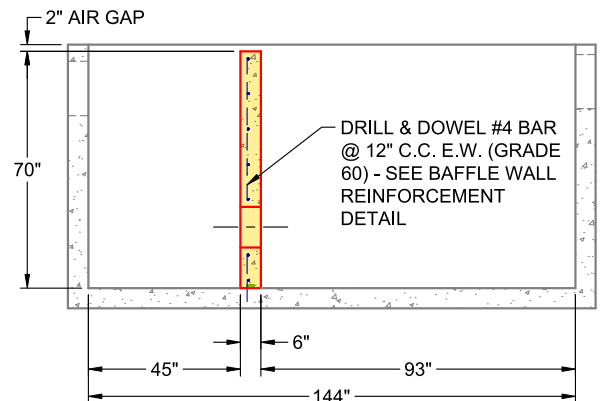
**PLAN VIEW  
(RIGHT SIDE UP)**



**BAFFLE WALL REINFORCEMENT  
#4 BAR @ 12" C.C. E.W. (GRADE 60)**



**SECTION A-A  
(RIGHT SIDE UP)**



**SECTION B-B  
(RIGHT SIDE UP)**