

Job Name: 25-2952 - KYTC Jefferson Co Call 106 (251315)
 Job Location: Indiana, KY
 Contractor: Louisville Paving and Construction

Plant: 100

5/12/2026 1:01:37 PM

Tech: J. Horsley - A

PC: J. Jarvis



Structure ID: 81

P3 BX024030-08LD08-15X27

CB FLAT TOP 8"W w/15"x27" HOLE F/F

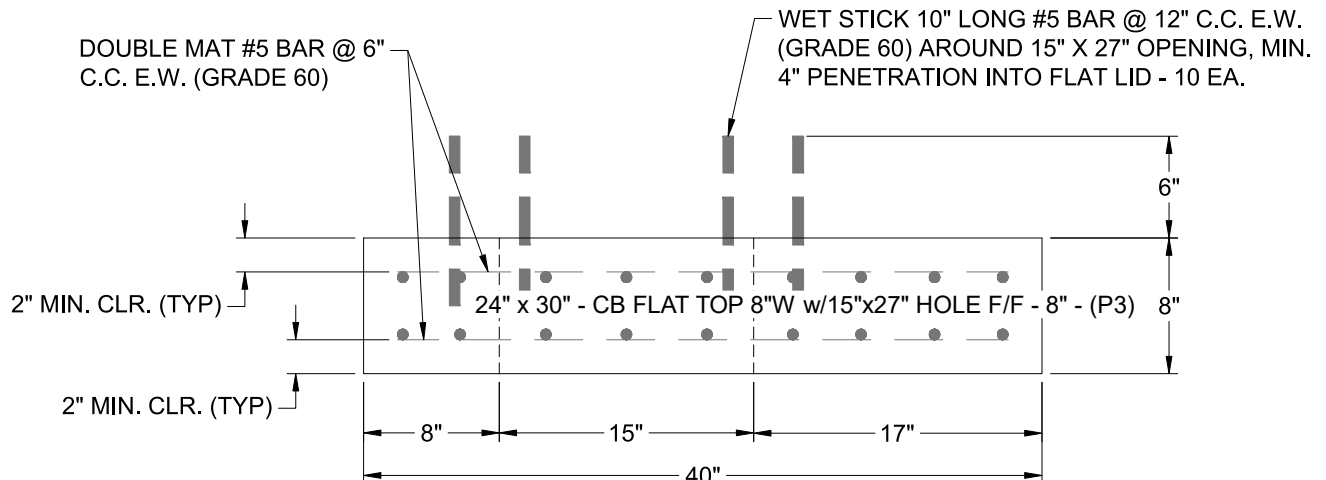
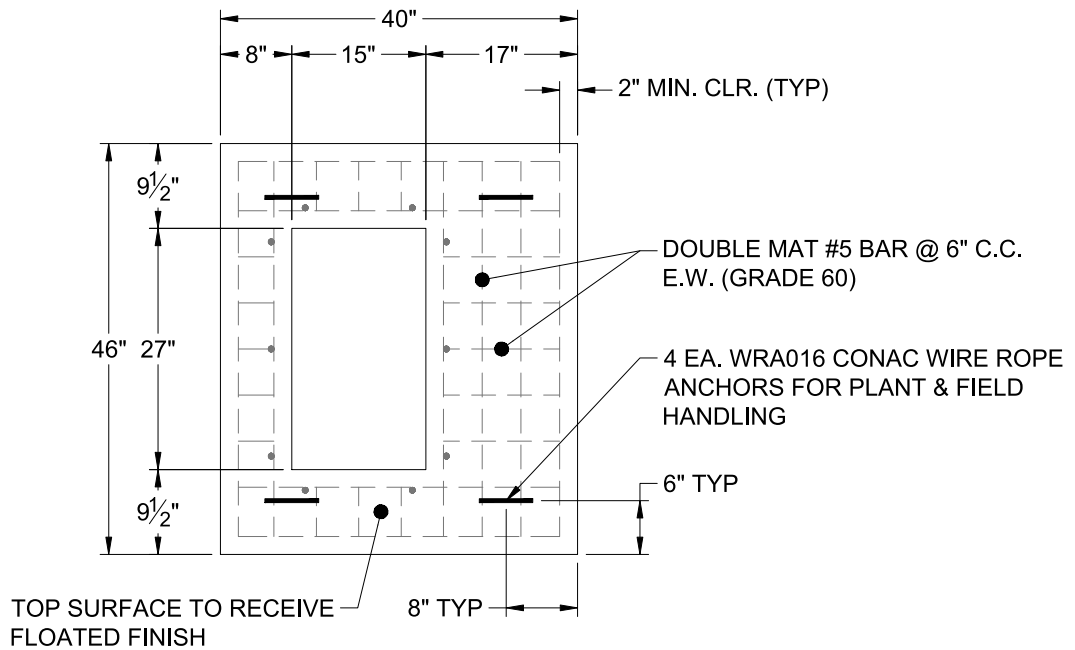
- P4) 15" x 27" - P.I.P. - BY OTHERS - 8"
- P3) 24" x 30" - CB FLAT TOP 8"W w/15"x27" HOLE F/F - 8"
- P2) 24" x 30" - BOX RISER 8inW F/G - 36"
- P1) 24" x 30" - BOX BASE 8inW, 8inF, Variable Ht T/n - 44"
- 2) 24" x 30" - Conseal CS-102 1.00"
- 1) 15" x 27" - Conseal CS-102 1.00"
- 3) Hole - 20
- 1) Hole - 18
- 2) Hole - 4

- 0 lb
- 963 lb
- 3366 lb
- 4540 lb
- 0 lb
- 0 lb
- 0 lb
- 0 lb
- 0 lb
- 0 lb

Structure Total: 8870 lb

Structure Notes:

- **KYTC STATE PROJECT**
- 1. PER KYTC DBI TYPE 13G / ASTM C-913 SPECS
- 2. CONCRETE: 4,000 PSI AT 28 DAYS
- 3. REINFORCEMENT: DOUBLE MAT #5 BAR @ 6" C.C. E.W. (GRADE 60) - 2" MIN. REBAR CLEARANCE (TYP)
- 4. HOE KY-230G FRAME & GRATE SUPPLIED BY OTHERS
- 5. STUB #5 BAR SPACED @ 12" C.C. (GRADE 60) 6" OUT TOP OF FLAT LID AROUND 15" X 27" OPENING FOR FIELD POUR TIE-IN
- 6. LIFTERS: 4 EA. WRA016 CONAC WIRE ROPE ANCHORS FOR PLANT & FIELD HANDLING
- 7. TOP SURFACE TO RECEIVE FLOATED FINISH



Coating (Int):
 Coating (Ext):

Seam Up: Flat
 Seam Dn: Flat

Wall Thickness: 8"

Height (Ext): 8"

Weight (Net): 963 lb
 Volume (Net): 0.25cu.yd