

Job Name: 25-1684P10 KYTC Jefferson Co. Call 200  
 Job Location: I-264 Louisville, Ky.  
 Contractor: Cleary Construction, Inc.

Plant: Beaver Dam, Ky.  
 5/20/2026 9:14:56 AM

Tech: J. Coppage  
 PC: J. Jarvis



**Structure ID: 403+46 RT CBIA-MOD INLET 51**

**P1 BX2436-08BVF BOX BASE 8inW, 8inF, Variable Ht**

- P3) 24" x 120" - CB INLET KY A 10' TOP LEFT - 10"
- P2) 24" x 120" - CB INLET KY A 10' BOTTOM LEFT - 18"
- P1) 24" x 36" - BOX BASE 8inW, 8inF, Variable Ht - 20"
- 1) 24" x 36" - Conseal CS-102 1.00"
- 1) Hole - 18"

**Structure Notes:**  
 -KYTC STATE PROJECT 251007  
 -REINFORCING: #5 BAR @ 12" C/C E.W. (TYP.)  
 -CS-102 BUTYL REQUIRED (SUPPLIED BY ICAST).  
 -KYTC CERTIFICATIONS REQUIRED.

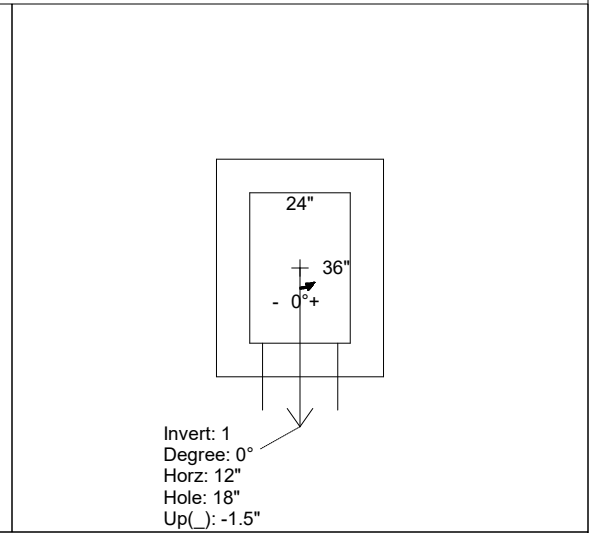
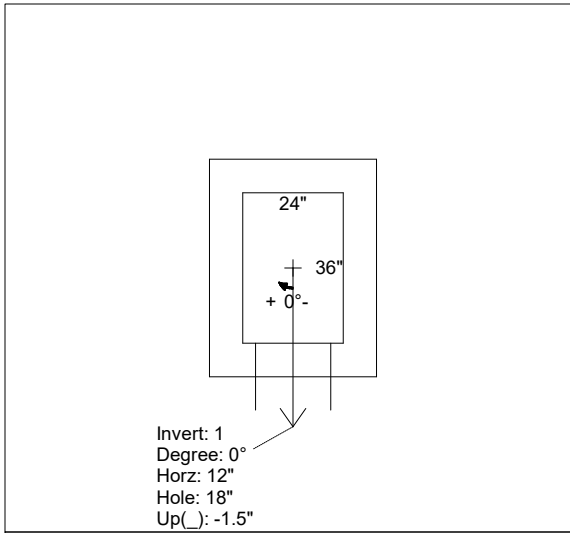
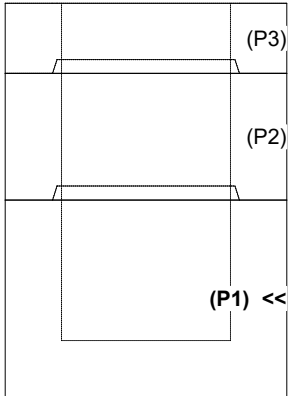
Structure Total: 11936 lb

Rim: 593.36' Rim to Invert: 4.31' Slack: 3.72" Sump: 0" Step Position:

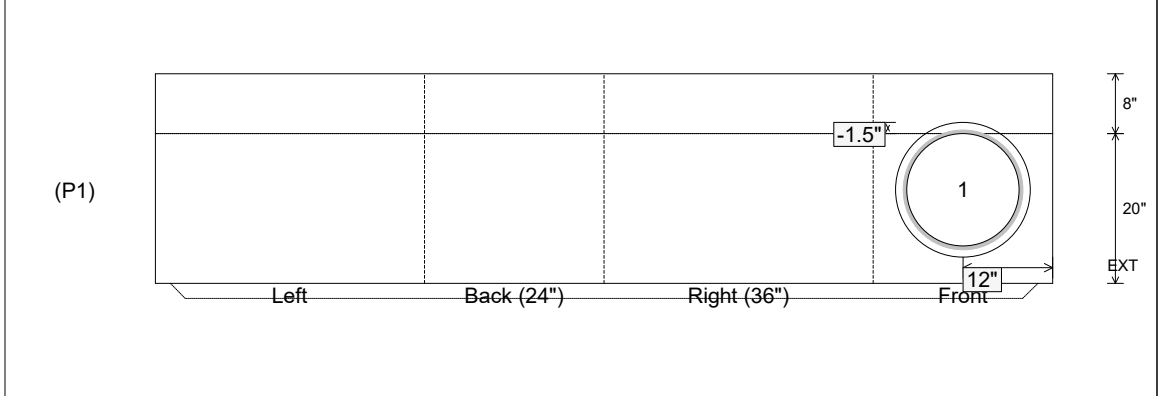
Position	Elev	Angle	Ext. (cw)	Pipe	Pipe OD	Connector	Hole	Horz Size	Up (Δ)	Offset
Invert 1	589.05'	0°	20"	15" CMP	16"	Hole 18	18"	18"	-1.5"	0"
Invert 2										
Invert 3										
Invert 4										
Invert 5										
Invert 6										
Invert 7										
Invert 8										

RIGHT-SIDE UP VIEW (int. dimensions)

UPSIDE-DOWN VIEW (int. dimensions)



INSIDE WALL DIMENSIONS



Coating (Int): Coating (Ext):	Seam Up: Tongue Seam Dn: n/a	Wall Thickness: 8" Floor Height: 8"	Height (Int): 20" Height (Ext): 28"	Weight (Net): 3266 lb Volume (Net): 0.83cu.yd
----------------------------------	---------------------------------	--	--	--