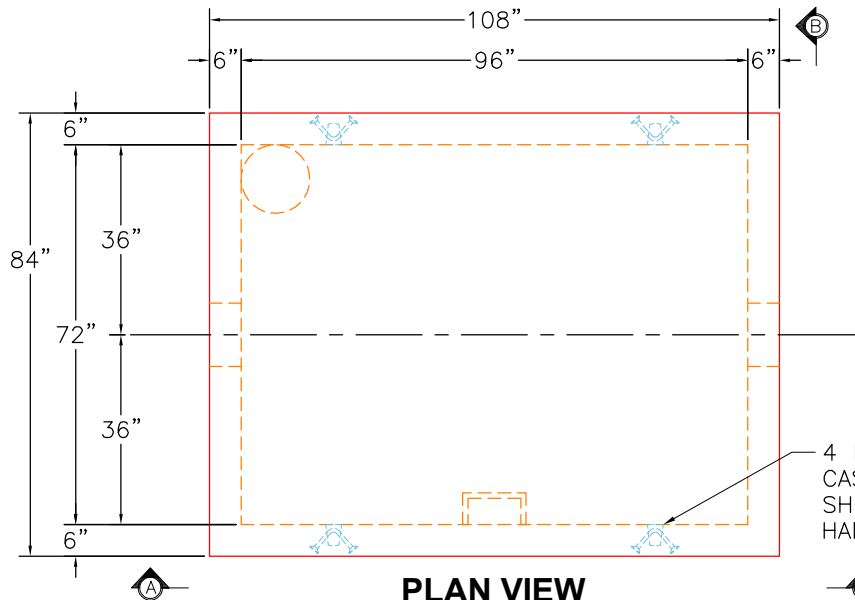


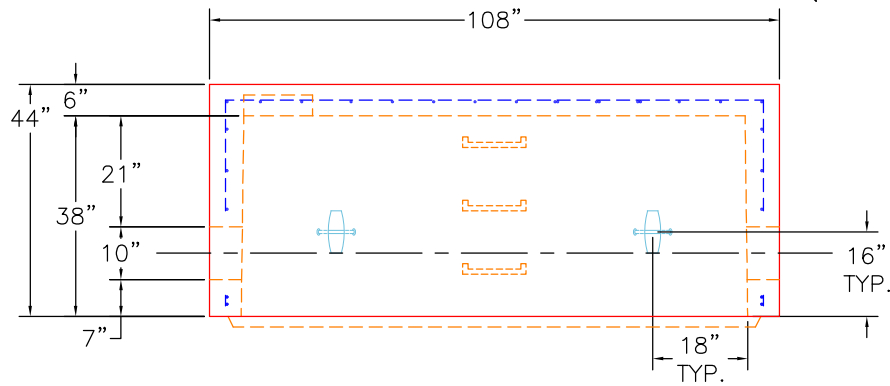
**GENERAL NOTES:**

1. MANUFACTURED TO ASTM C-913 (LATEST REVISION).
2. CONCRETE: 4,000 PSI AT 28 DAYS.
3. REINFORCING: #5 BAR @ 8" O.C.E.W. PER ASTM A615. (GRADE 60).
4. WEIGHT: 11,850 LBS
5. DOUBLE ROLL CS-102 JOINT SEALANT.

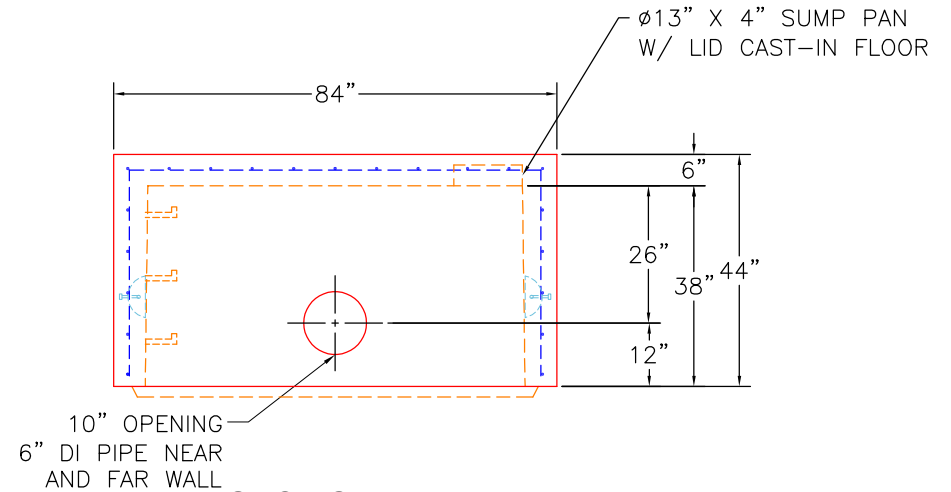


**PLAN VIEW**  
UPSIDE DOWN


4 EA. CONAC 5CA14 ANCHORS  
CAST IN THE BASE SECTION AS  
SHOWN FOR PLANT & FIELD  
HANDLING.



**SECTION A-A**



**SECTION B-B**

<p>PRODUCTION WORK ORDER</p>		<p>PRODUCT I.D.: BX7296-06W06-VF</p>	<p>DESCRIPTION: 6' X 8' VAULT BASE SECTION</p>		
	<p>QUALITY CONTROL CHECKLIST</p>	<p>PRODUCT VIEW: UPSIDE DOWN</p>	<p>CUSTOMER: CORE &amp; MAIN</p>		
	<ul style="list-style-type: none"> <li><input type="checkbox"/> ALL DIMENSIONS CORRECT.</li> <li><input type="checkbox"/> LIFTERS INSTALLED.</li> <li><input type="checkbox"/> OPENING CORRECT LOCATION(S).</li> <li><input type="checkbox"/> REINFORCING CORRECT.</li> <li><input type="checkbox"/> SURFACE QUALITY ACCEPTABLE.</li> <li><input type="checkbox"/> EDGES CHAMFERED.</li> <li><input type="checkbox"/> ALL PATCHWORK ACCEPTABLE.</li> </ul>	<p>PLANT: BEAVER DAM, KY.</p>	<p>PROJECT: GLADEVILLE VAULT</p>		
		<p>WEIGHT: 11,850 LBS.</p>	<p>STRUCTURE: VAULT</p>		
		<p>TOP SECTION JOINT: TONGUE</p>	<p>ORDER NO: 26-2098</p>		
		<p>BASE SECTION JOINT: N/A</p>	<p>PC: C. GOFF</p>	<p>DRAWING: J. COPPAGE</p>	
		<p>QC CHECK INITIALS:</p>	<p>DATE: 05/18/26</p>	<p>SCALE: NTS</p>	<p>PG. 1 of 1</p>