

Job Name: 26-2008 - EVWR South Yard
 Job Location: Evansville, IN
 Contractor: Chastain Excavating

Plant: 100
 5/18/2026 2:54:58 PM

Tech: Jared - A
 PC: T. Lewis



Structure ID: QL1 ST-DCB

P2 BX028064-06LD06-24x24

BX FLAT LID 6inW w/24"x24" HOLE F/F

- P3) 24" x 24" - CASTING HEIGHT - 4"
- P2) 28" x 64" - BX FLAT LID 6inW w/24"x24" HOLE F/F - 6"
- P1) 28" x 64" - BOX BASE 6inW, 6inF, Variable Ht F/n - 36"
- 1) CASTING - HOE 280T F/G
- 1) 28" x 64" - Conseal CS-102 1.00"
- 1) 24" x 24" - Conseal CS-102 1.00"
- 1) Hole - 29
- 2) Hole - 26

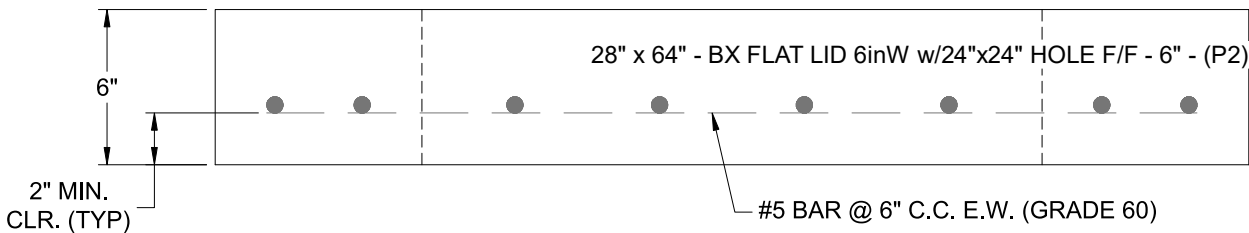
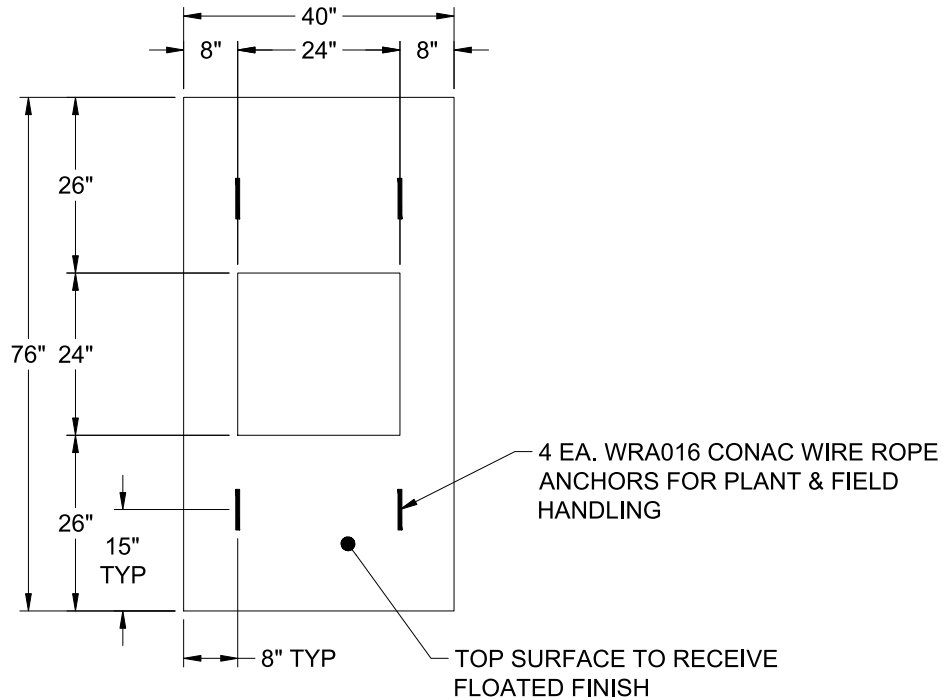
0 lb
 1241 lb
 4433 lb
 182 lb
 0 lb
 0 lb
 0 lb
 0 lb

 5856 lb

Structure Total:

Structure Notes:

1. PER ASTM C-913 SPECIFICATIONS
2. CONCRETE: 4,000 PSI AT 28 DAYS
3. REINFORCEMENT: #5 BAR @ 6" C.C. E.W. (GRADE 60) - 2" MIN. REBAR CLEARANCE (TYP)
4. HOE 280T FRAME & GRATE SUPPLIED BY ICAST
5. LIFTERS: 4 EA. WRA016 CONAC WIRE ROPE ANCHORS FOR PLANT & FIELD HANDLING
6. TOP SURFACE TO RECEIVE FLOATED FINISH



Coating (Int): Coating (Ext):	Seam Up: Flat Seam Dn: Flat	Wall Thickness: 6"	Height (Ext): 6"	Weight (Net): 1241 lb Volume (Net): 0.32cu.yd
----------------------------------	--------------------------------	--------------------	------------------	--