

Job Name: 25-4733 - The Paddock  
 Job Location: Springfield, KY  
 Contractor: Core & Main LP (Lou)

Plant: 100  
 5/14/2026 1:08:52 PM

Tech: Jared - F  
 PC: T. Lewis



**Structure ID: SSWR-6**

**P1 MH048BA30**

**MH BASE T/n**

- P4) 24" - CASTING HEIGHT - 7" 0 lb
  - P3) 24" - GRADE RING F/F - 3" 202 lb
  - P2) 48" - ECC CONE w/ 24" HOLE F/G - 36" 3000 lb
  - P1) 48" - MH BASE T/n - 30" 3282 lb
  - 1) JOINT WRAP - 0.065"x6"x50' CONSEAL CS212 0 lb
  - 1) JOINT WRAP PRIMER - CONSEAL CS-75 (1 gal.) 0 lb
  - 1) 48" - MH INVERT CHANNEL - FULL HEIGHT 1440 lb
  - 1) CASTING - HOE MC-315 F/C Sanitary 258 lb
  - 1) 48" - Conseal CS-102 1.00" (Double) 0 lb
  - 2) PSX - 12M NYLO 16 lb
  - 1) PSX - 12-06 NYLO 8 lb
  - 5) MH Step ML-10-TDS-NCR - 10" 0 lb
- Structure Total: 8207 lb

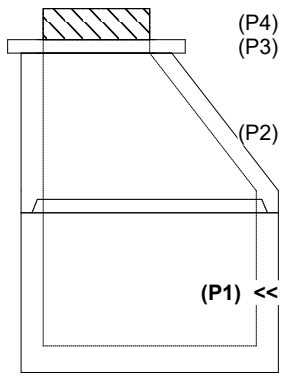
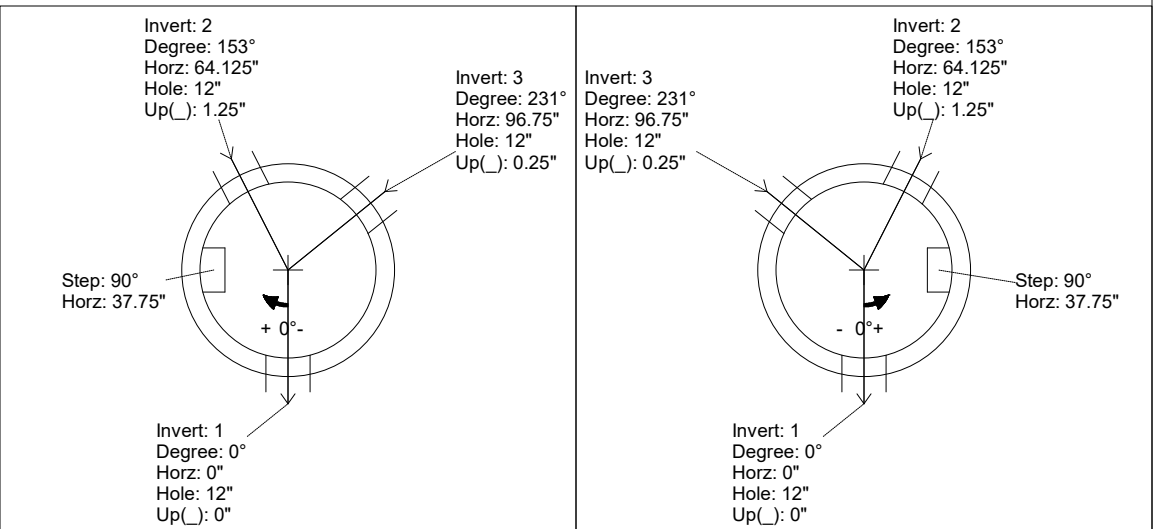
**Structure Notes:**  
 1. PER ASTM C478 SPECIFICATIONS.  
 2. CONCRETE = 4,000 PSI AT 28 DAYS.  
 3. CASTING BY ICAST (HOE MC-315 F/C SANITARY).  
  
 REINFORCING PER ASTM A615 (GRADE 60).  
 - CONE (As .12)  
 - RISER/WALLS (As .12)  
 - FLOOR (As .31) #5 BARS AT 12" C.C.E.W.

Rim: 892.81' Rim to Invert: 6.18' Slack: 0.16" Sump: 2" Step Position: 90°

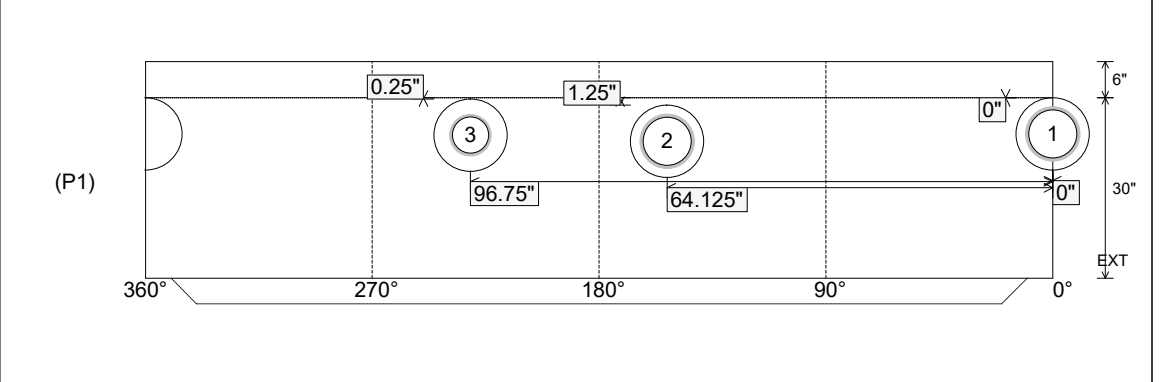
Position	Elev	Angle	Ext. (cw)	Pipe	Pipe OD	Connector	Hole	Horz Size	Up ( )	Offset
Invert 1	886.63'	0°	0"	8" PVC C900	9.05"	PSX 12M NYLO	12"	12.129"	0"	0"
Invert 2	886.73'	153°	77.5"	8" PVC C900	9.05"	PSX 12M NYLO	12"	12.129"	1.25"	0"
Invert 3	886.73'	231°	116.875"	6" PVC C900	6.9"	PSX 12-06 NYLO	12"	12.129"	0.25"	0"
Invert 4										
Invert 5										
Invert 6										
Invert 7										
Invert 8										

RIGHT-SIDE UP VIEW (int. dimensions)

UPSIDE-DOWN VIEW (int. dimensions)



INSIDE WALL DIMENSIONS



Coating (Int): Coating (Ext):	Seam Up: Tongue Seam Dn: n/a	Wall Thickness: 5" Floor Height: 6"	Height (Int): 30" Height (Ext): 36"	Weight (Net): 3282 lb Volume (Net): 0.84cu.yd
----------------------------------	---------------------------------	--	--	--

Job Name: 25-4733 - The Paddock  
 Job Location: Springfield, KY  
 Contractor: Core & Main LP (Lou)

Plant: 100  
 5/14/2026 1:08:52 PM

Tech: Jared - F  
 PC: T. Lewis



**Structure ID: SSWR-6**

**P1 MH048BA30**

**MH BASE T/n**

- P4) 24" - CASTING HEIGHT - 7"
- P3) 24" - GRADE RING F/F - 3"
- P2) 48" - ECC CONE w/ 24" HOLE F/G - 36"
- P1) 48" - MH BASE T/n - 30"
- 1) JOINT WRAP - 0.065"x6"x50' CONSEAL CS212
- 1) JOINT WRAP PRIMER - CONSEAL CS-75 (1 gal.)
- 1) 48" - MH INVERT CHANNEL - FULL HEIGHT
- 1) CASTING - HOE MC-315 F/C Sanitary
- 1) 48" - Conseal CS-102 1.00" (Double)
- 2) PSX - 12M NYLO
- 1) PSX - 12-06 NYLO
- 5) MH Step ML-10-TDS-NCR - 10"

0 lb  
 202 lb  
 3000 lb  
 3282 lb  
 0 lb  
 0 lb  
 1440 lb  
 258 lb  
 0 lb  
 16 lb  
 8 lb  
 0 lb  
 -----  
 Structure Total: 8207 lb

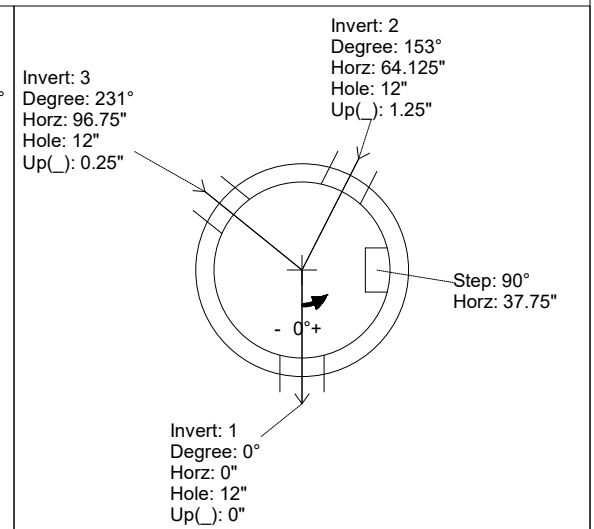
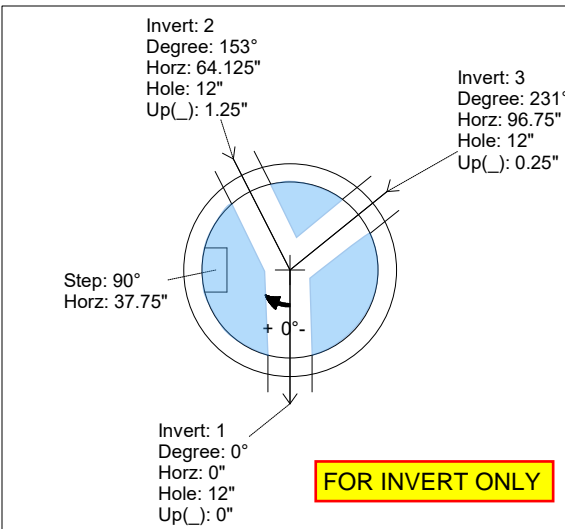
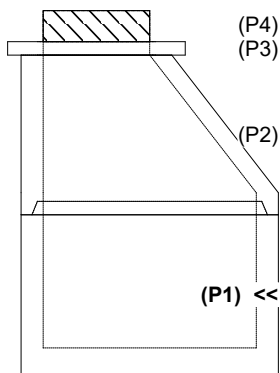
**Structure Notes:**  
 1. PER ASTM C478 SPECIFICATIONS.  
 2. CONCRETE = 4,000 PSI AT 28 DAYS.  
 3. CASTING BY ICAST (HOE MC-315 F/C SANITARY).  
 REINFORCING PER ASTM A615 (GRADE 60).  
 - CONE (As .12)  
 - RISER/WALLS (As .12)  
 - FLOOR (As .31) #5 BARS AT 12" C.C.E.W.

Rim: 892.81' Rim to Invert: 6.18' Slack: 0.16" Sump: 2" Step Position: 90°

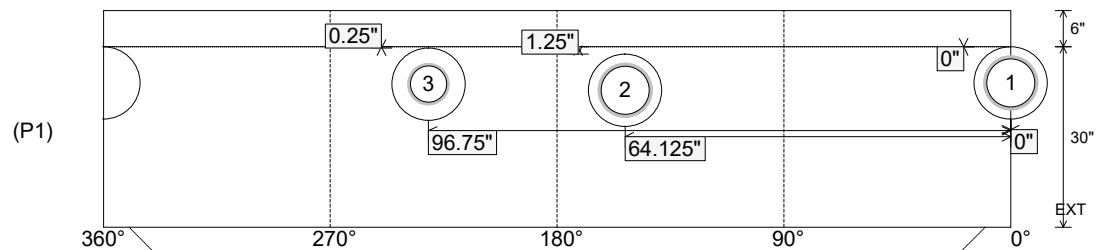
Position	Elev	Angle	Ext. (cw)	Pipe	Pipe OD	Connector	Hole	Horz Size	Up ( )	Offset
Invert 1	886.63'	0°	0"	8" PVC C900	9.05"	PSX 12M NYLO	12"	12.129"	0"	0"
Invert 2	886.73'	153°	77.5"	8" PVC C900	9.05"	PSX 12M NYLO	12"	12.129"	1.25"	0"
Invert 3	886.73'	231°	116.875"	6" PVC C900	6.9"	PSX 12-06 NYLO	12"	12.129"	0.25"	0"
Invert 4										
Invert 5										
Invert 6										
Invert 7										
Invert 8										

RIGHT-SIDE UP VIEW (int. dimensions)

UPSIDE-DOWN VIEW (int. dimensions)



INSIDE WALL DIMENSIONS



Coating (Int):  
 Coating (Ext):

Seam Up: Tongue  
 Seam Dn: n/a

Wall Thickness: 5"  
 Floor Height: 6"

Height (Int): 30"  
 Height (Ext): 36"

Weight (Net): 3282 lb  
 Volume (Net): 0.84cu.yd