

Job Name: 25-4733 - The Paddock
 Job Location: Springfield, KY
 Contractor: Core & Main LP (Lou)

Plant: 100
 5/14/2026 8:16:17 PM

Tech: Jared - F
 PC: T. Lewis



Structure ID: OCS-B1

P3 BX036036-06LD08S

BX FLAT LID 8inW w/HOE 280T CAST IN F/F

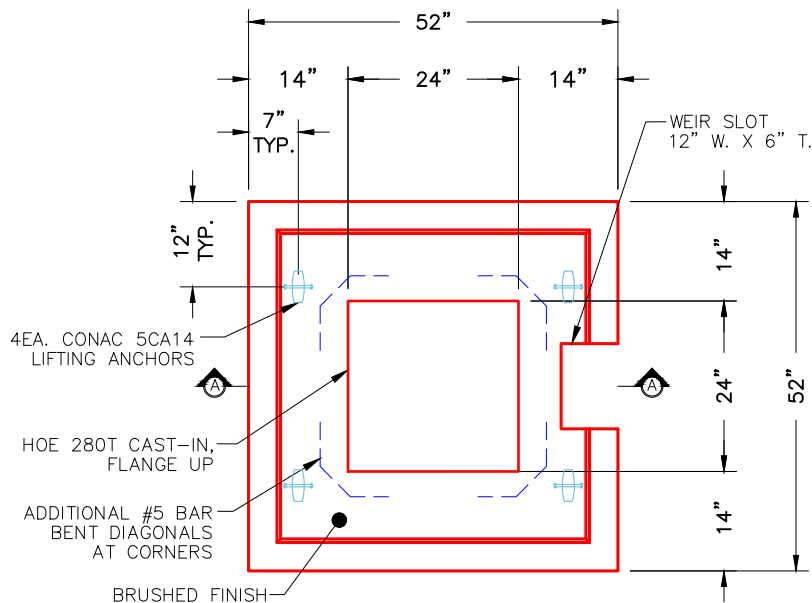
- P4) 24" x 24" - CASTING HEIGHT - 0"
- P3) 36" x 36" - BX FLAT LID 8inW w/HOE 280T CAST IN F/F - 6"
- P2) 36" x 36" - BOX RISER 8inW, Variable Ht F/G - 44"
- P1) 36" x 36" - BOX BASE 8inW, 8inF, Variable Ht T/n - 34"
- 1) CASTING - HOE 280T F/G
- 2) 36" x 36" - Conseal CS-102 1.00"
- 1) 24" x 24" - Conseal CS-102 1.00"
- 1) Hole - 30
- 1) Orifice - 4"
- 1) Weir n/n - 12"x30"

0 lb
 1023 lb
 5005 lb
 5349 lb
 182 lb
 0 lb
 0 lb
 0 lb
 0 lb
 0 lb
 0 lb
 11560 lb

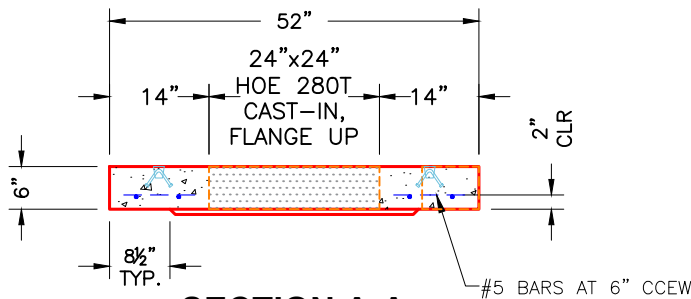
Structure Total:

Structure Notes:
 1. PER ASTM C913 SPECIFICATIONS.
 2. CONCRETE = 4,000 PSI AT 28 DAYS.
 3. NO STEPS AND NO INVERT CHANNEL.
 4. CASTING BY ICAST (HOE 280T F/G-CAST-IN, FLANGE UP).

 REINFORCING PER ASTM A615 (GRADE 60).
 - TOP SLAB (As .62) #5 BARS AT 6" C.C.E.W.
 - WALLS (As .12) #5 BARS AT 12" C.C.E.W.
 - FLOOR (As .12) #5 BARS AT 12" C.C.E.W.



PLAN VIEW



SECTION A-A

NOTES:

- 1. MANUFACTURED TO ASTM C-913 (LATEST REVISION).
- 2. CONCRETE: 4,000 PSI AT 28 DAYS.
- 3. REINFORCING: #5 BAR @ 6" O.C. E.W. (GRADE 60).

Coating (Int):
 Coating (Ext):

Seam Up: Flat
 Seam Dn: Flat

Wall Thickness: 8"

Height (Ext): 6"

Weight (Net): 1023 lb
 Volume (Net): 0.26cu.yd