

Job Name: 25-4733 - The Paddock
 Job Location: Springfield, KY
 Contractor: Core & Main LP (Lou)

Plant: 100
 5/14/2026 8:16:01 PM

Tech: Jared - F
 PC: T. Lewis



Structure ID: OCS-B1

P1 BX3636-08BAVF

BOX BASE 8inW, 8inF, Variable Ht T/n

- P4) 24" x 24" - CASTING HEIGHT - 0"
- P3) 36" x 36" - BX FLAT LID 8inW w/HOE 280T CAST IN F/F - 6"
- P2) 36" x 36" - BOX RISER 8inW, Variable Ht F/G - 44"
- P1) 36" x 36" - BOX BASE 8inW, 8inF, Variable Ht T/n - 34"
- 1) CASTING - HOE 280T F/G
- 2) 36" x 36" - Conseal CS-102 1.00"
- 1) 24" x 24" - Conseal CS-102 1.00"
- 1) Hole - 30
- 1) Orifice - 4"
- 1) Weir n/n - 12"x30"

0 lb
 1023 lb
 5005 lb
 5349 lb
 182 lb
 0 lb
 0 lb
 0 lb
 0 lb
 0 lb
 0 lb
 11560 lb

Structure Notes:
 1. PER ASTM C913 SPECIFICATIONS.
 2. CONCRETE = 4,000 PSI AT 28 DAYS.
 3. NO STEPS AND NO INVERT CHANNEL.
 4. CASTING BY ICAST (HOE 280T F/G-CAST-IN, FLANGE UP).

REINFORCING PER ASTM A615 (GRADE 60).
 - TOP SLAB (As .62) #5 BARS AT 6" C.C.E.W.
 - WALLS (As .12) #5 BARS AT 12" C.C.E.W.
 - FLOOR (As .12) #5 BARS AT 12" C.C.E.W.

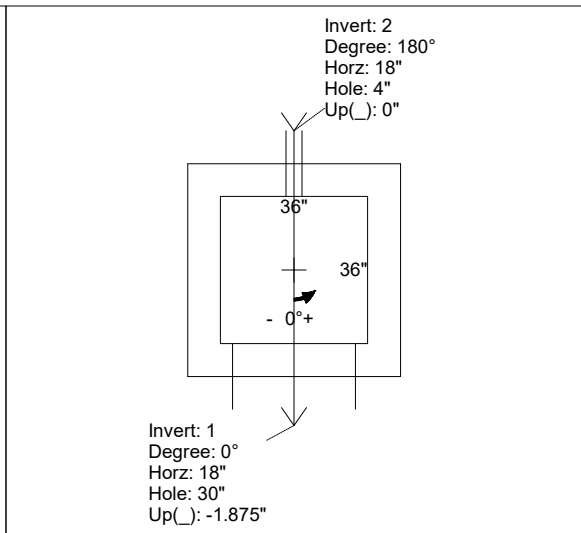
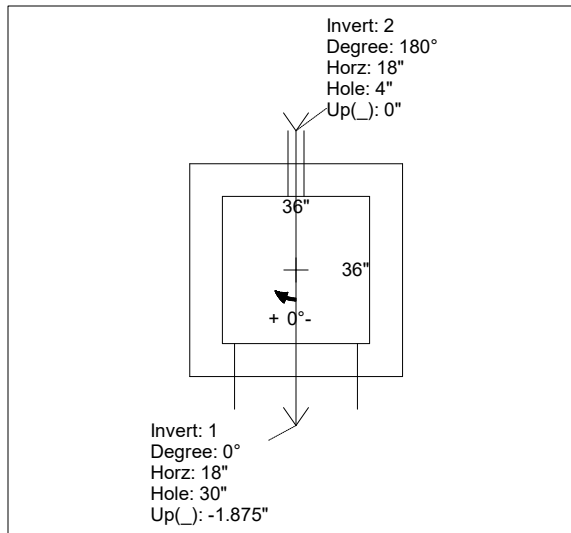
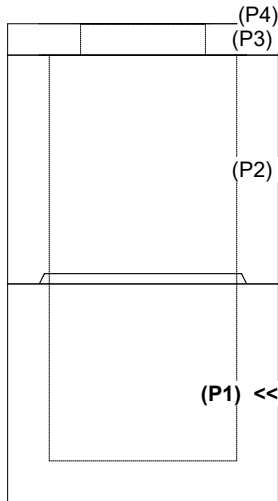
Structure Total:

Rim: 881' Rim to Invert: 7' Slack: 0" Sump: 0" Step Position:

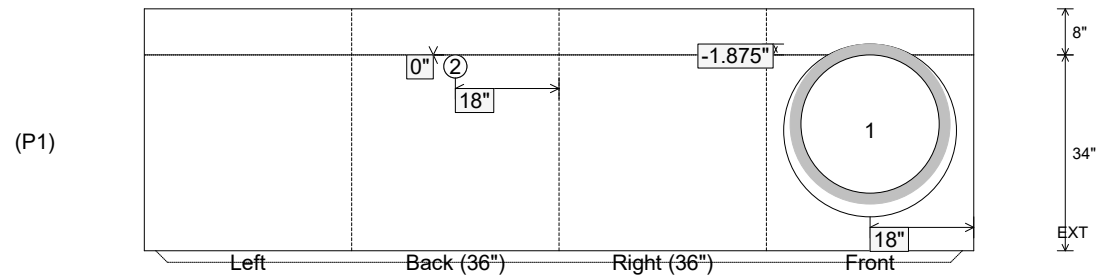
Position	Elev	Angle	Ext. (cw)	Pipe	Pipe OD	Connector	Hole	Horz Size	Up ()	Offset
Invert 1	874'	0°	26"	24" HDPE	27.8"	Hole 30	30"	30"	-1.875"	0"
Invert 2	874'	180°	26"	4" Orifice	4"	Orifice 4"	4"	4"	0"	0"
Invert 3										
Invert 4										
Invert 5										
Invert 6										
Invert 7										
Invert 8										

RIGHT-SIDE UP VIEW (int. dimensions)

UPSIDE-DOWN VIEW (int. dimensions)



INSIDE WALL DIMENSIONS



Coating (Int):
 Coating (Ext):

Seam Up: Tongue
 Seam Dn: n/a

Wall Thickness: 8"
 Floor Height: 8"

Height (Int): 34"
 Height (Ext): 42"

Weight (Net): 5349 lb
 Volume (Net): 1.37cu.yd