

Job Name: 25-3452 - Churchill Downs Skye Terrace Improvements  
 Job Location: Louisville, KY 40208  
 Contractor: Louisville Paving and Construction

Plant: 100  
 4/30/2026 1:21:53 PM

Tech: Jared - F  
 PC: J. Jarvis



**Structure ID: S213**

**P1 MH060BAVF**

**MH BASE Custom Ht T/n**

- P5) 24" - CASTING HEIGHT - 7"
- P4) 24" - GRADE RING F/F - 4"
- P3) 60" - MH FLAT TOP w/ 24" ECC Hole F/G - 13"
- P2) 60" - MH RISER T/G - 36"
- P1) 60" - MH BASE Custom Ht T/n - 43"
- 1) CASTING - HOE MC-420 F/C Storm
- 2) 60" - Conseal CS-102 1.00"
- 2) Hole - 30
- 1) Hole - 16
- 7) MH Step ML-10-TDS-NCR - 10"

0 lb  
 270 lb  
 2869 lb  
 3656 lb  
 6482 lb  
 340 lb  
 0 lb  
 0 lb  
 0 lb  
 0 lb  
 -----  
 Structure Total: 13617 lb

**Structure Notes:**  
 1. PER ASTM C478 SPECIFICATIONS.  
 2. CONCRETE = 4,000 PSI AT 28 DAYS.  
 3. NO INVERT CHANNEL.  
 4. CASTING BY ICAST (HOE MC-420 F/C STORM)

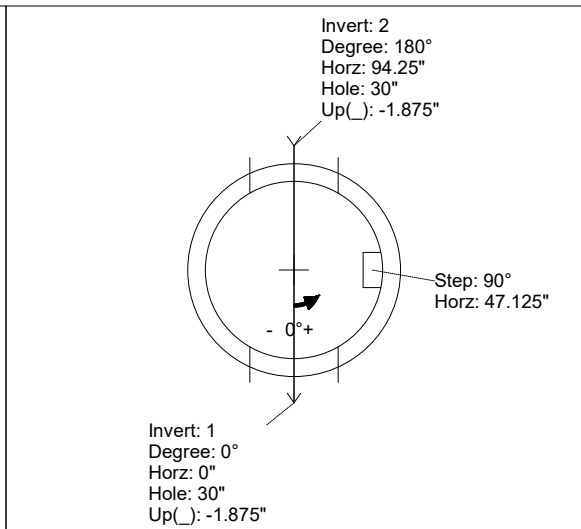
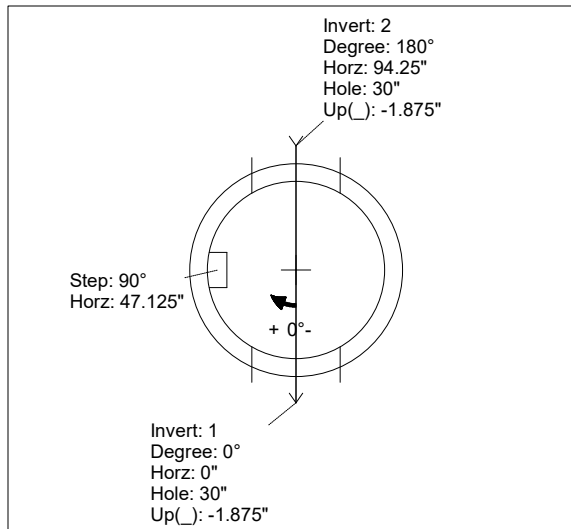
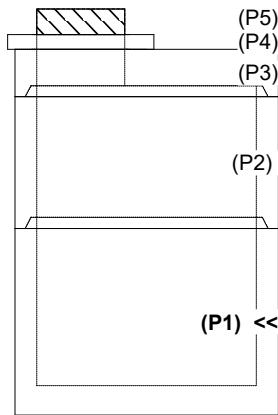
REINFORCING PER ASTM A615 (GRADE 60).  
 - TOP SLAB (As .62) #5 BARS AT 6" C.C.E.W..  
 - RISER/WALLS (As .18)  
 - FLOOR (As .37) #5 BARS AT 10" C.C.E.W.

Rim: 454.46' Rim to Invert: 8.66' Slack: 0.92" Sump: 0" Step Position: 90°

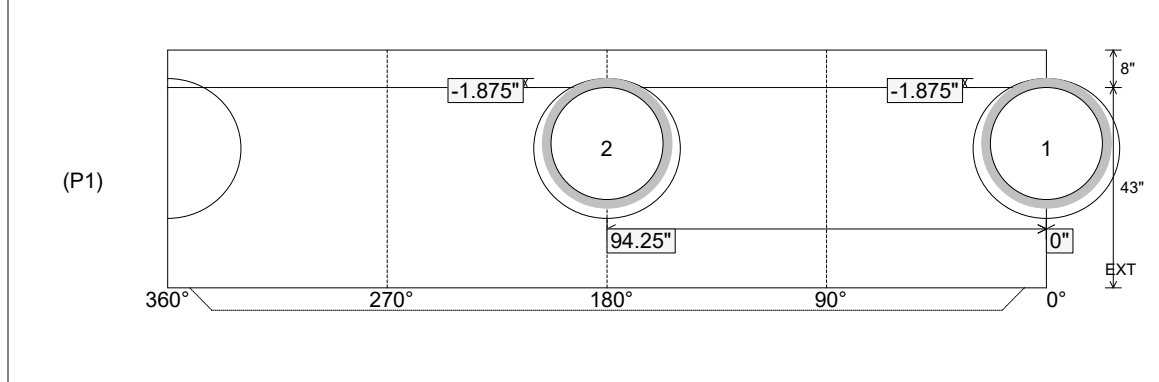
Position	Elev	Angle	Ext. (cw)	Pipe	Pipe OD	Connector	Hole	Horz Size	Up ( )	Offset
Invert 1	445.8'	0°	0"	24" HDPE	27.8"	Hole 30	30"	31.416"	-1.875"	0"
Invert 2	445.8'	180°	113.125"	24" HDPE	27.8"	Hole 30	30"	31.416"	-1.875"	0"
Invert 3										
Invert 4										
Invert 5										
Invert 6										
Invert 7										
Invert 8										

RIGHT-SIDE UP VIEW (int. dimensions)

UPSIDE-DOWN VIEW (int. dimensions)



INSIDE WALL DIMENSIONS



Coating (Int): Coating (Ext):	Seam Up: Tongue Seam Dn: n/a	Wall Thickness: 6" Floor Height: 8"	Height (Int): 43" Height (Ext): 51"	Weight (Net): 6482 lb Volume (Net): 1.66cu.yd
----------------------------------	---------------------------------	--	--	--