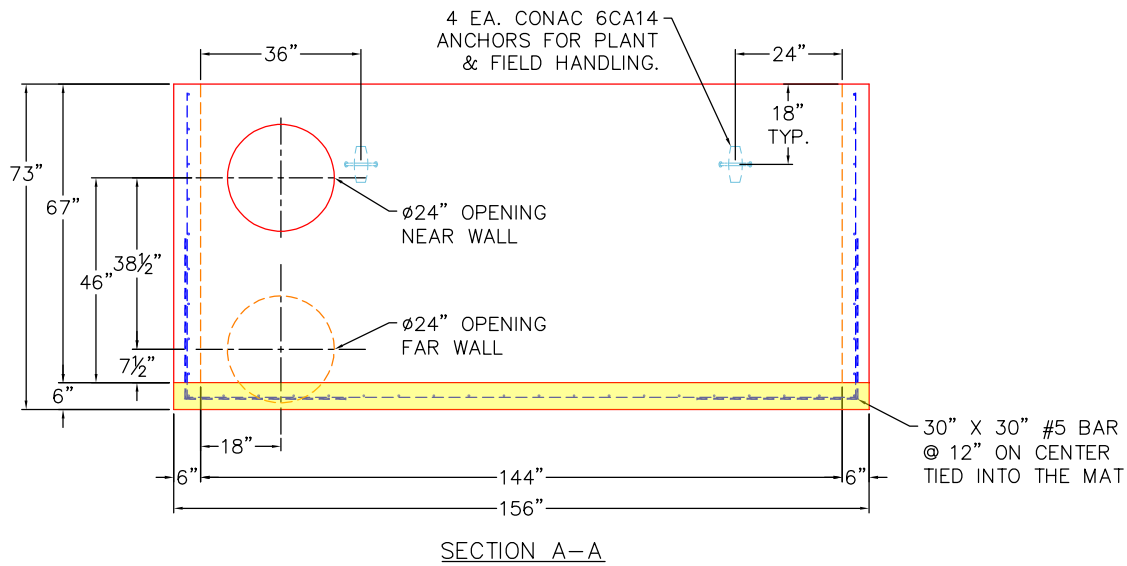


PLAN VIEW

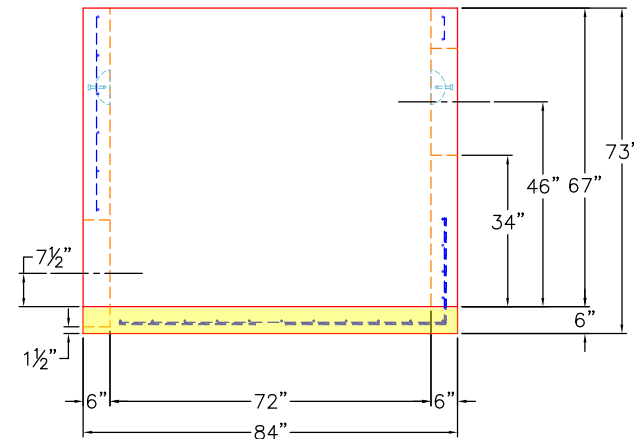
**GENERAL NOTES:**

1. MANUFACTURED TO ASTM C-913 (LATEST REVISION).
2. CONCRETE: 5,000 PSI AT 28 DAYS. CONCRETE.
3. REINFORCING: PER ASTM A615 (GRADE 60). AS PER CONTECH STORMFILTER DRAWINGS
4. WEIGHTS: TOTAL = 21,524 LBS  
**FIRST POUR = 6,820 LBS**  
 SECOND POUR = 14,704 LBS
5. VAULT JOINT TO BE SEALED WITH CONCRETE SEALANTS, INC. CS-102 ROLL BUTYL MASTIC. (SUPPLIED BY ICAST)
8. STRUCTURE TO HAVE INTERNALS INSTALLED BY ICAST.
9. INLET & OUTLET PIPE OPENINGS TO BE STENCILED ONTO THE OUTSIDE OF THE PRODUCT.
10. LIFT ANCHORS TO BE PLACED ON THE OUTSIDE OF THE STRUCTURE.


**FIRST POUR DRAWING**

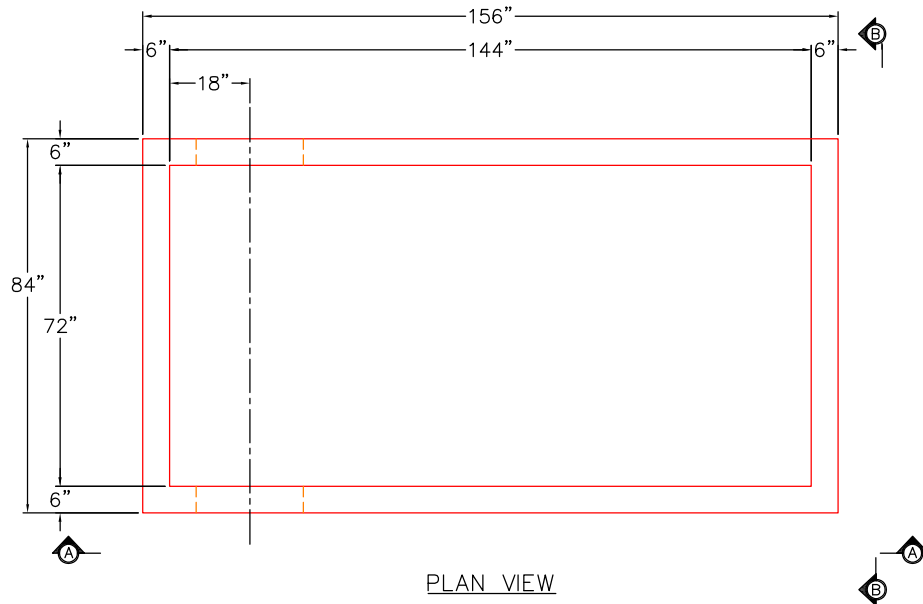


SECTION A-A



SECTION B-B

<p>PRODUCTION WORK ORDER</p>		<p>PRODUCT I.D.: BX072144-06W06F-VFFT</p>	<p>DESCRIPTION: 72" X 144" X 67" TALL VAULT</p>	
	<p>QUALITY CONTROL CHECKLIST</p>	<p>PRODUCT VIEW: RIGHT SIDE UP</p>	<p>CUSTOMER: CONTECH ENGINEERING SOLUTIONS</p>	
	<ul style="list-style-type: none"> <li><input type="checkbox"/> ALL DIMENSIONS CORRECT.</li> <li><input type="checkbox"/> LIFTERS INSTALLED.</li> <li><input type="checkbox"/> OPENING CORRECT LOCATION.</li> <li><input type="checkbox"/> REINFORCING CORRECT.</li> <li><input type="checkbox"/> SURFACE QUALITY ACCEPTABLE.</li> <li><input type="checkbox"/> EDGES CHAMFERED.</li> <li><input type="checkbox"/> ALL PATCHWORK ACCEPTABLE.</li> </ul>	<p>PLANT: BEAVER DAM, KY.</p>	<p>PROJECT: 830197 TSSAA HEADQUARTERS</p>	
		<p>WEIGHT: 21,524 LBS.</p>	<p>STRUCTURE: 20-KFPD0612</p>	
		<p>TOP SECTION JOINT: N/A</p>	<p>ORDER NO: 26-2210</p>	
		<p>BASE SECTION JOINT: N/A</p>	<p>PC: C. GOFF</p>	<p>DRAWING: S. FELLETTA</p>
		<p>QC CHECK INITIALS:</p>	<p>DATE: 05/06/26</p>	<p>SCALE: NTS</p>

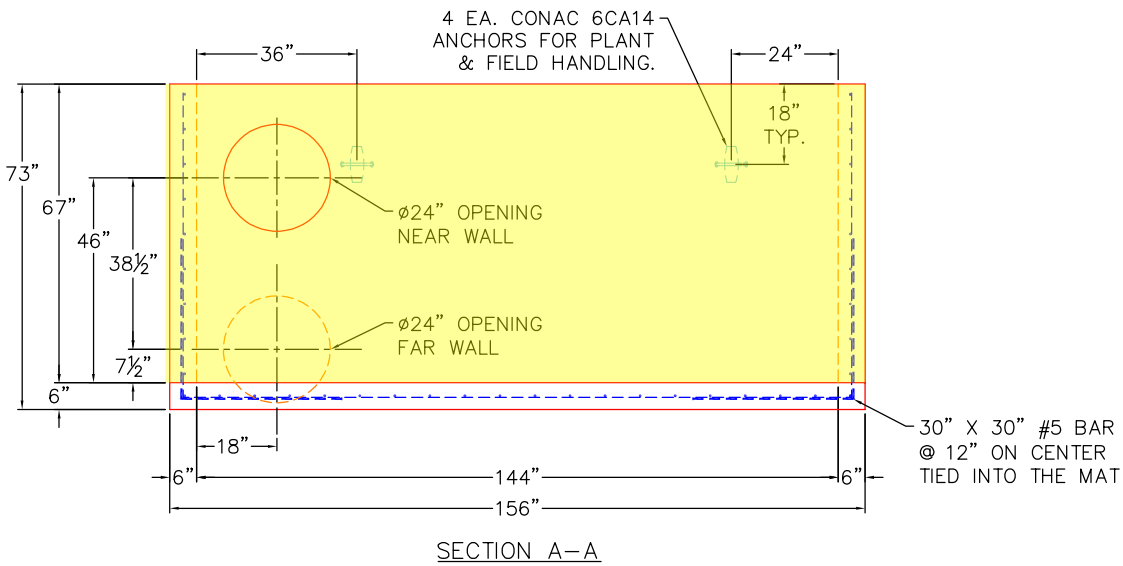


PLAN VIEW

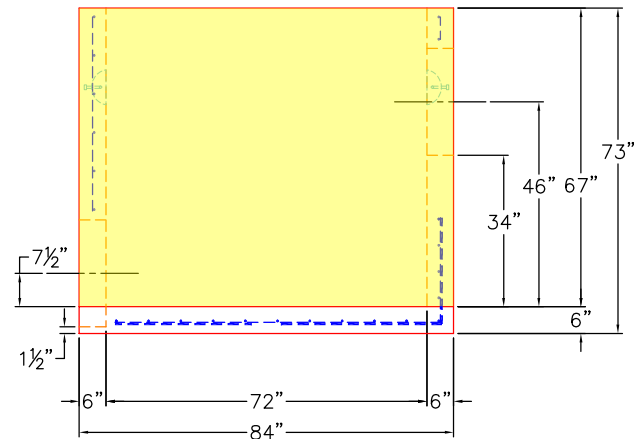
**GENERAL NOTES:**

1. MANUFACTURED TO ASTM C-913 (LATEST REVISION).
2. CONCRETE: 5,000 PSI AT 28 DAYS. CONCRETE.
3. REINFORCING: PER ASTM A615 (GRADE 60). AS PER CONTECH STORMFILTER DRAWINGS
4. WEIGHTS: TOTAL = 21,524 LBS  
FIRST POUR = 6,820 LBS  
**SECOND POUR = 14,704 LBS**
5. VAULT JOINT TO BE SEALED WITH CONCRETE SEALANTS, INC. CS-102 ROLL BUTYL MASTIC. (SUPPLIED BY ICAST)
8. STRUCTURE TO HAVE INTERNALS INSTALLED BY ICAST.
9. INLET & OUTLET PIPE OPENINGS TO BE STENCILED ONTO THE OUTSIDE OF THE PRODUCT.
10. LIFT ANCHORS TO BE PLACED ON THE OUTSIDE OF THE STRUCTURE.


**SECOND POUR DRAWING**



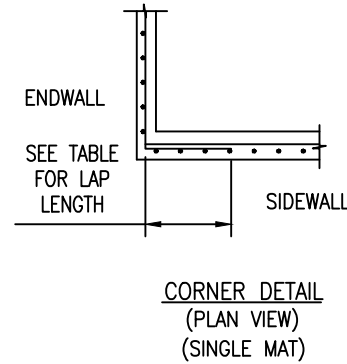
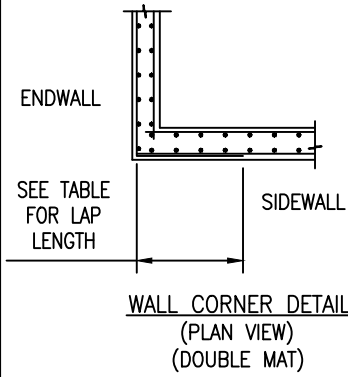
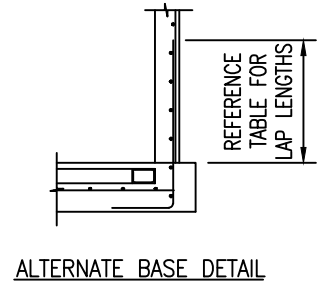
SECTION A-A



SECTION B-B

		<b>PRODUCTION WORK ORDER</b> QUALITY CONTROL CHECKLIST <input type="checkbox"/> ALL DIMENSIONS CORRECT. <input type="checkbox"/> LIFTERS INSTALLED. <input type="checkbox"/> OPENING CORRECT LOCATION. <input type="checkbox"/> REINFORCING CORRECT. <input type="checkbox"/> SURFACE QUALITY ACCEPTABLE. <input type="checkbox"/> EDGES CHAMFERED. <input type="checkbox"/> ALL PATCHWORK ACCEPTABLE.	PRODUCT I.D.: BX072144-06W06F-VFFT PRODUCT VIEW: RIGHT SIDE UP PLANT: BEAVER DAM, KY. WEIGHT: 21,524 LBS. TOP SECTION JOINT: N/A BASE SECTION JOINT: N/A QC CHECK INITIALS:	DESCRIPTION: 72" X 144" X 67" TALL VAULT CUSTOMER: CONTECH ENGINEERING SOLUTIONS PROJECT: 830197 TSSAA HEADQUARTERS STRUCTURE: 20-KFPD0612 ORDER NO: 26-2210 PC: C. GOFF DATE: 05/06/26	DRAWING: S. FELLETTA SCALE: NTS PG. 1 of 1
---	--	--	---	---	--

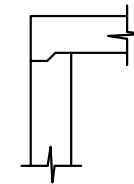
MINIMUM LAP	
BAR SIZE	LAP
#4(10M)	21"[535]
#5(15M)	26"[660]
#6(20M)	31"[790]
#7(25M)	36"[915]
#8(32M)	46"[1170]



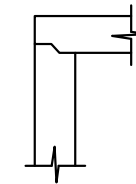
- NOTES:
- DESIGN LOAD = AASHTO HS20-44 (ONE LANE OF TRAFFIC; ONE AXLE)
  - CONCRETE STRENGTH = 5000psi
  - REINFORCING STEEL - GRADE 60
  - CHART BELOW SHOWS MAXIMUM DEPTH OF FILL FOR UNIT CLASS AT VARIOUS WATER TABLE DEPTHS. DRY INDICATED W/T BELOW UNIT. FILL DEPTHS GREATER THAN 10' SHALL REQUIRE SPECIAL DESIGN.
  - PIPE OPENINGS, SIZE AND LOCATION, AS REQUIRED. PROVIDE ADDITIONAL REINFORCING EQUAL TO THE BARS INTERRUPTED, 1/2 EACH SIDE. ADD #4 DIAGONAL TRIM BARS AROUND OPENINGS.
  - FULL HEIGHT MONO BASE UNIT, MUST HAVE TOP SLAB IN PLACE PRIOR TO BACK FILLING.
  - BAR WEIGHTS AND DETAILS BASED ON VISUAL SHOWN.
  - SECONDARY CAST FLOW KIT SHALL BE IN PLACE PRIOR TO BACK FILLING.
  - THE OPENING SIZES AND LOCATIONS MAY VARY. FOR EXACT SIZES AND LOCATIONS SEE CONTECH PROJECT SPECIFIC DRAWINGS.

SECTION	0	3	6	9	DRY
FULL BASE	2.75	4.25	5.75	8.25	10.00

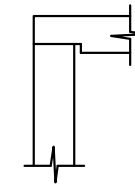
ALT. TOP SLAB  
DETAIL A  
\*SEE BELOW



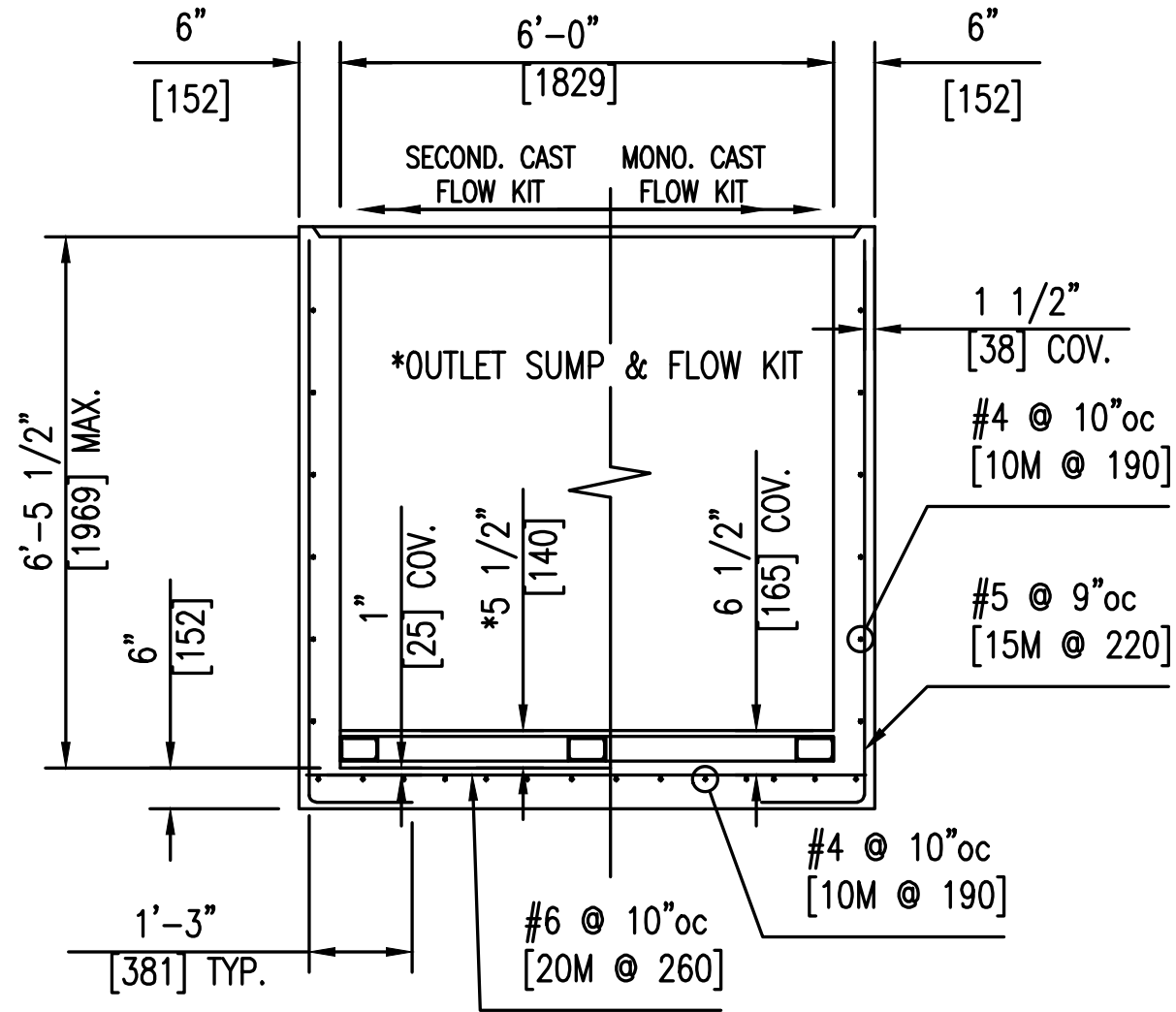
ALT. TOP SLAB  
DETAIL B



ALT. TOP SLAB  
DETAIL C



\* ALTERNATE SLAB DETAIL "A" CANNOT BE USED WITH FULL HEIGHT MONO BASE. SEE NOTE 6 ABOVE.



FULL HEIGHT MONOLITHIC BASE UNIT  
(BAR WEIGHT = 900 LBS.)  
SEE NOTE 6

ALTERNATE WALL DESIGN (HORIZONTAL BARS TO OUTSIDE)			
WALLS	VERT.	HORIZ.	COV. TO HORIZ.
6"	#5 @ 10"	#4 @ 12"	1 1/2"



TITLE: STORMFILTER 6 X 12 - 600 CLASS  
PREPARED BY: PROJECT: STORMFILTER  
DRAWN BY: KMK DATE: 6/2010  
CHECKED BY: SLV JOB No: 2008.025.064  
SCALE: NONE NUMBER: SFCX12



26-2210  
830197 TSSAA Headquarters  
20-KFPD0612

STORMFILTER 6' X 12': 600 CLASS 12'-0" L x 6'-0" W x 6'-0" I.D.