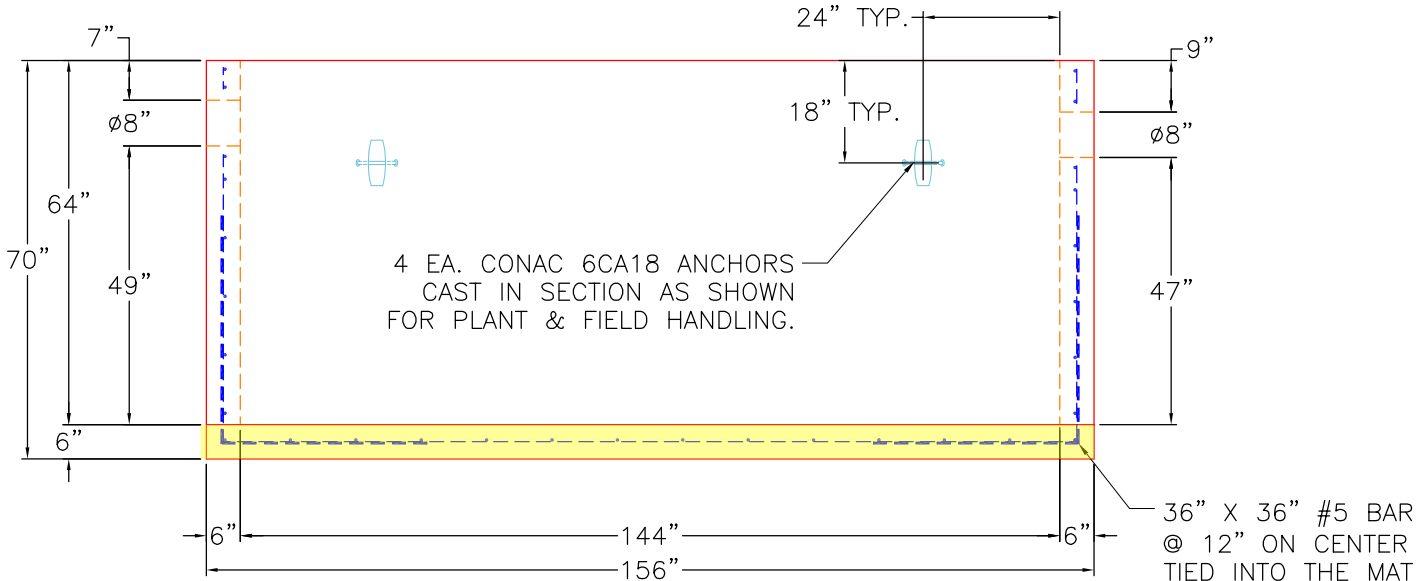


PLAN VIEW



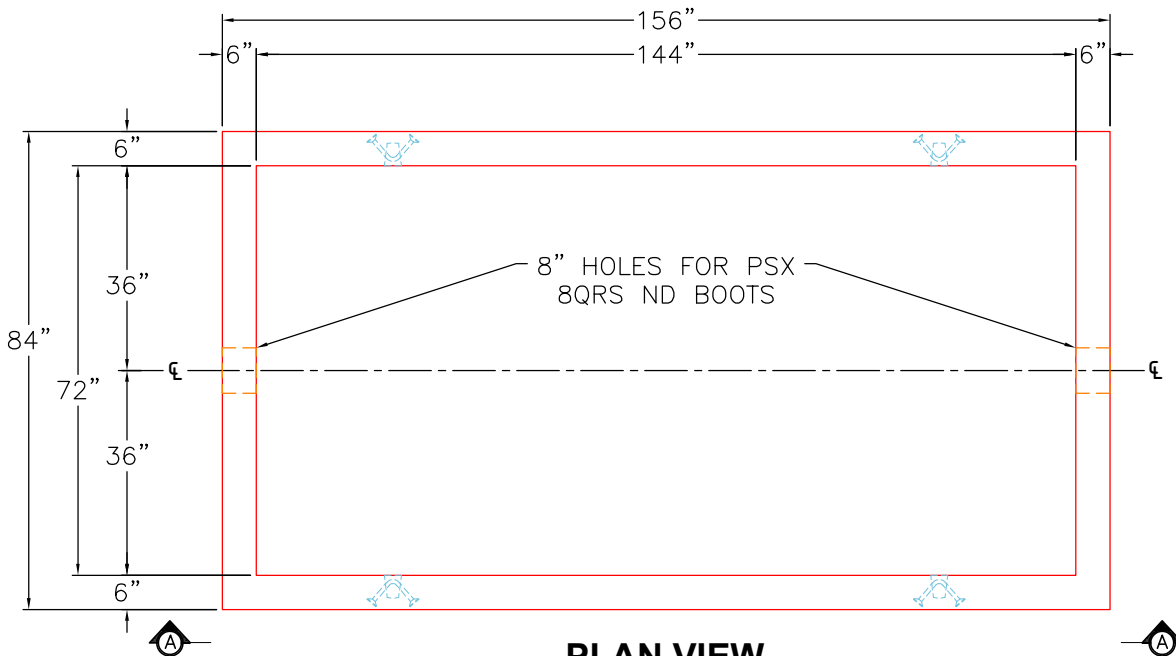
SECTION A-A

GENERAL NOTES:

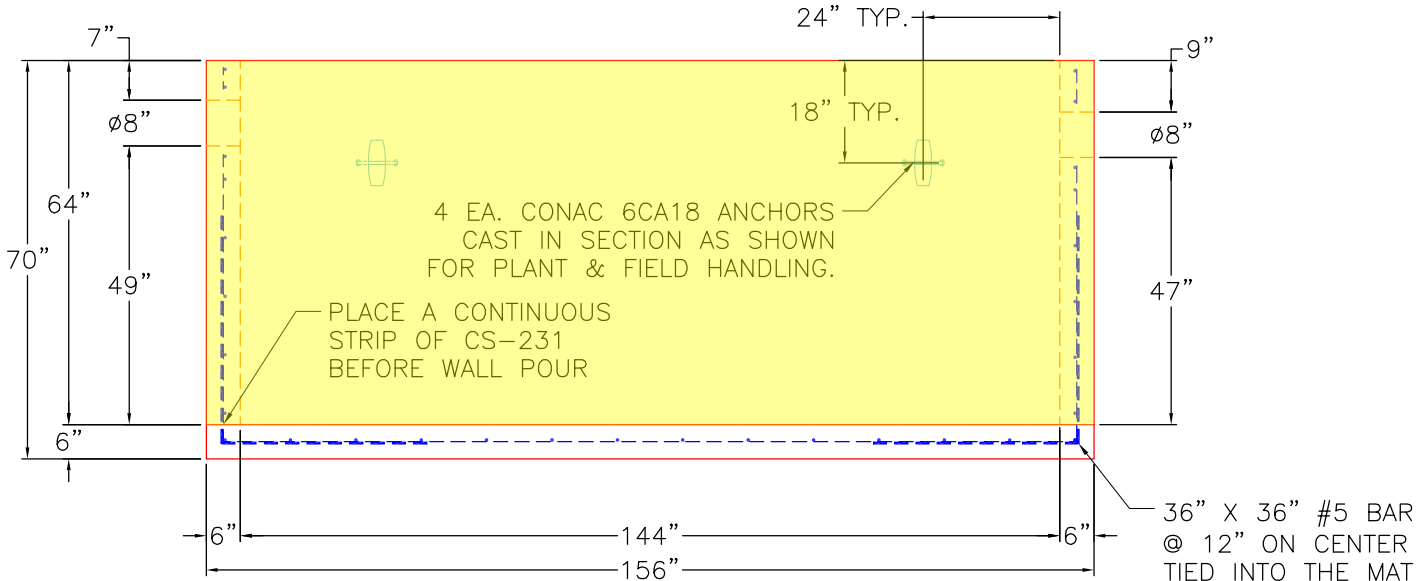
1. MANUFACTURED TO ASTM C-913 (LATEST REVISION).
2. CONCRETE: 4,500 PSI AT 28 DAYS. CONCRETE.
3. REINFORCING: WALLS AND FLOOR #5 BAR @ 12" E.W. O.C. (GRADE 60).
4. WEIGHTS: TOTAL = 23,431 LBS
 FIRST POUR = 6,598 LBS
 SECOND POUR = 14,643 LBS
 THIRD POUR = 2,190 LBS
5. ICAST TO PROVIDE 2X PSX 8QRS DD BOOTS
6. JOINT SEALANT TO BE CONSEAL CS-102, 1".

FIRST POUR DRAWING

PRODUCTION WORK ORDER		PRODUCT I.D.: BX072144-06W06F-VFFT	DESCRIPTION: 72" X 144" X 64" TALL 2,000 GAL GREASE TRAP BASE	
	QUALITY CONTROL CHECKLIST	PRODUCT VIEW: RIGHT SIDE UP	CUSTOMER: CORE & MAIN LP	
	<input type="checkbox"/> ALL DIMENSIONS CORRECT.	PLANT: BEAVER DAM, KY.	PROJECT: METRO CENTER GREASE TRAP	
	<input type="checkbox"/> LIFTERS INSTALLED.	WEIGHT: 23,431 LBS.	STRUCTURE: QL1 GT2000 (3)	
	<input type="checkbox"/> HOLE LOCATION(S) CORRECT.	TOP SECTION JOINT: N/A	ORDER NO: 26-2242	
	<input type="checkbox"/> REINFORCING CORRECT.	BASE SECTION JOINT: N/A	PC: T. RYAN	DRAWING: S. FELLETTER
	<input type="checkbox"/> BAFFLE POURED CORRECTLY. <input type="checkbox"/> BOOTS & BANDS INSTALLED. <input type="checkbox"/> SURFACE QUALITY ACCEPTABLE.	QC CHECK INITIALS:	DATE: 05/07/26	SCALE: NTS PG. 1 of 1



PLAN VIEW



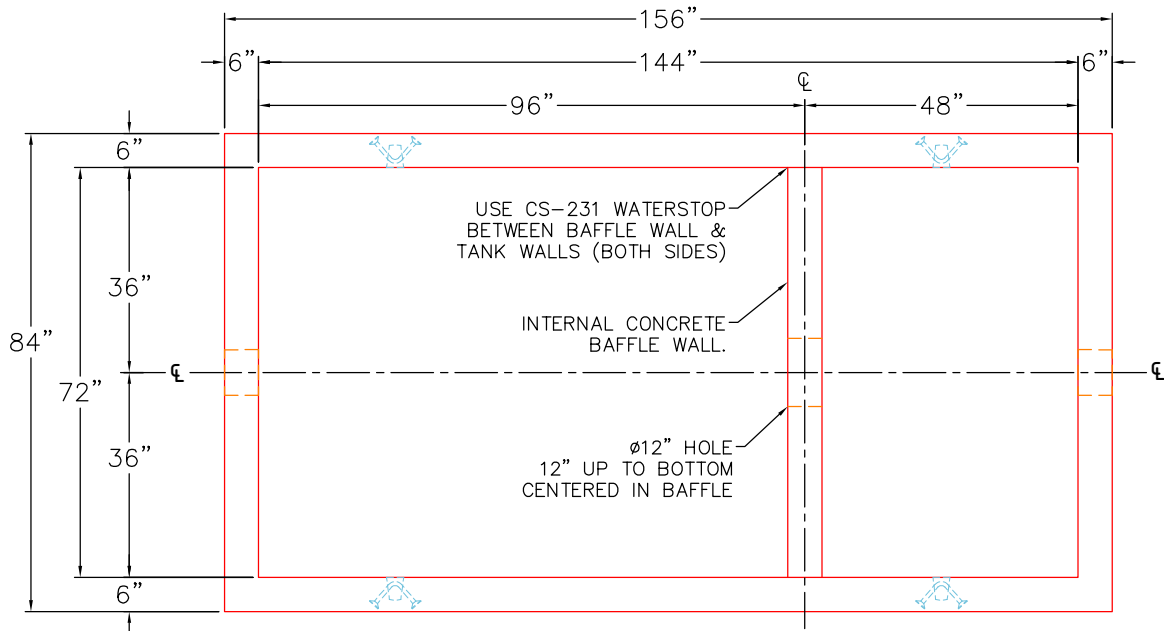
SECTION A-A

GENERAL NOTES:

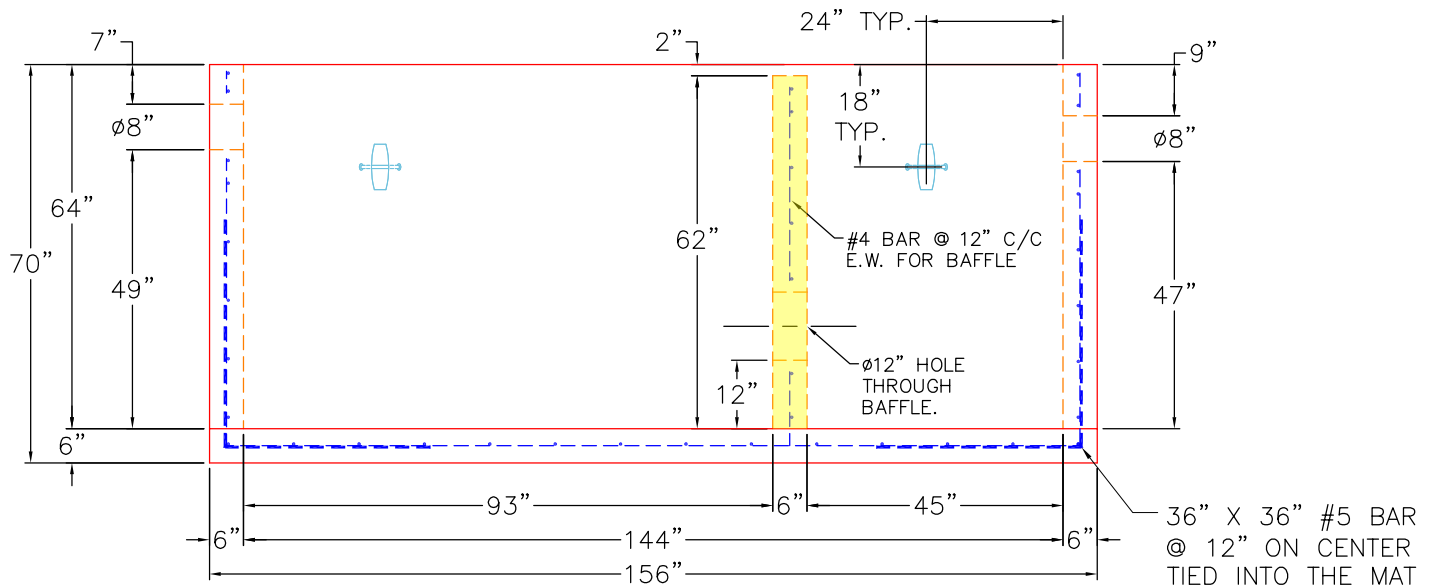
1. MANUFACTURED TO ASTM C-913 (LATEST REVISION).
2. CONCRETE: 4,500 PSI AT 28 DAYS. CONCRETE.
3. REINFORCING: WALLS AND FLOOR #5 BAR @ 12" E.W. O.C. (GRADE 60).
4. WEIGHTS: TOTAL = 23,431 LBS
 FIRST POUR = 6,598 LBS
 SECOND POUR = 14,643 LBS
 THIRD POUR = 2,190 LBS
5. ICAST TO PROVIDE 2X PSX 8QRS DD BOOTS
6. JOINT SEALANT TO BE CONSEAL CS-102, 1".

SECOND POUR DRAWING

PRODUCTION WORK ORDER		PRODUCT I.D.: BX072144-06W06F-VFFT	DESCRIPTION: 72" X 144" X 64" TALL 2,000 GAL GREASE TRAP BASE	
	QUALITY CONTROL CHECKLIST	PRODUCT VIEW: RIGHT SIDE UP	CUSTOMER: CORE & MAIN LP	
	<input type="checkbox"/> ALL DIMENSIONS CORRECT.	PLANT: BEAVER DAM, KY.	PROJECT: METRO CENTER GREASE TRAP	
	<input type="checkbox"/> LIFTERS INSTALLED.	WEIGHT: 23,431 LBS.	STRUCTURE: QL1 GT2000 (3)	
	<input type="checkbox"/> HOLE LOCATION(S) CORRECT.	TOP SECTION JOINT: N/A	ORDER NO: 26-2242	
	<input type="checkbox"/> REINFORCING CORRECT.	BASE SECTION JOINT: N/A	PC: T. RYAN	DRAWING: S. FELLETTER
	<input type="checkbox"/> BAFFLE POURED CORRECTLY. <input type="checkbox"/> BOOTS & BANDS INSTALLED. <input type="checkbox"/> SURFACE QUALITY ACCEPTABLE.	QC CHECK INITIALS:	DATE: 05/07/26	SCALE: NTS PG. 1 of 1



PLAN VIEW




FRONT VIEW

GENERAL NOTES:

1. MANUFACTURED TO ASTM C-913 (LATEST REVISION).
2. CONCRETE: 4,500 PSI AT 28 DAYS. CONCRETE.
3. REINFORCING: WALLS AND FLOOR #5 BAR @ 12" E.W. O.C. (GRADE 60).
4. WEIGHTS: TOTAL = 23,431 LBS
 FIRST POUR = 6,598 LBS
 SECOND POUR = 14,643 LBS
 THIRD POUR = 2,190 LBS
5. ICAST TO PROVIDE 2X PSX 8QRS DD BOOTS
6. JOINT SEALANT TO BE CONSEAL CS-102, 1".

THIRD POUR DRAWING

PRODUCTION WORK ORDER		PRODUCT I.D.: BX072144-06W06F-VFFT	DESCRIPTION: 72" X 144" X 64" TALL 2,000 GAL GREASE TRAP BASE	
	QUALITY CONTROL CHECKLIST		PRODUCT VIEW: RIGHT SIDE UP	
	<input type="checkbox"/> ALL DIMENSIONS CORRECT.		CUSTOMER: CORE & MAIN LP	
	<input type="checkbox"/> LIFTERS INSTALLED.		PROJECT: METRO CENTER GREASE TRAP	
	<input type="checkbox"/> HOLE LOCATION(S) CORRECT.		STRUCTURE: QL1 GT2000 (3)	
	<input type="checkbox"/> REINFORCING CORRECT.		ORDER NO: 26-2242	
	<input type="checkbox"/> BAFFLE POURED CORRECTLY.		PC: T. RYAN	
<input type="checkbox"/> BOOTS & BANDS INSTALLED.		DRAWING: S. FELLETTER		
<input type="checkbox"/> SURFACE QUALITY ACCEPTABLE.		QC CHECK INITIALS:		
		DATE: 05/07/26	SCALE: NTS	PG. 1 of 1