

Job Name: 26-2366 840323 Churchill Downs Skye Terrace Improvements  
 Job Location: Louisville, KY  
 Contractor: Contech Engineering Solutions

Plant: Beaver Dam  
 5/20/2026 10:09:00 AM

Tech: S. Felletter  
 PC: C. Goff



**Structure ID: 10-CS-6**

**P4 MH072LD15-30ECC**

**MH FLAT TOP SPEC. (30" ECC HOLE) F/G**

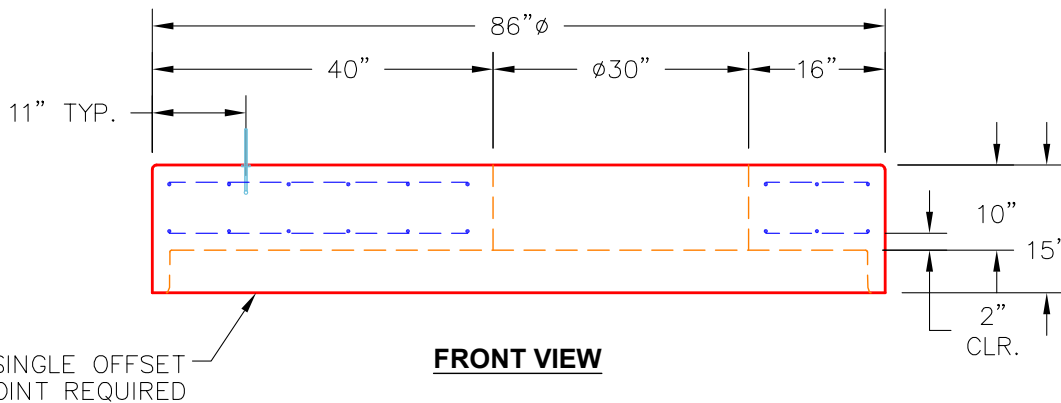
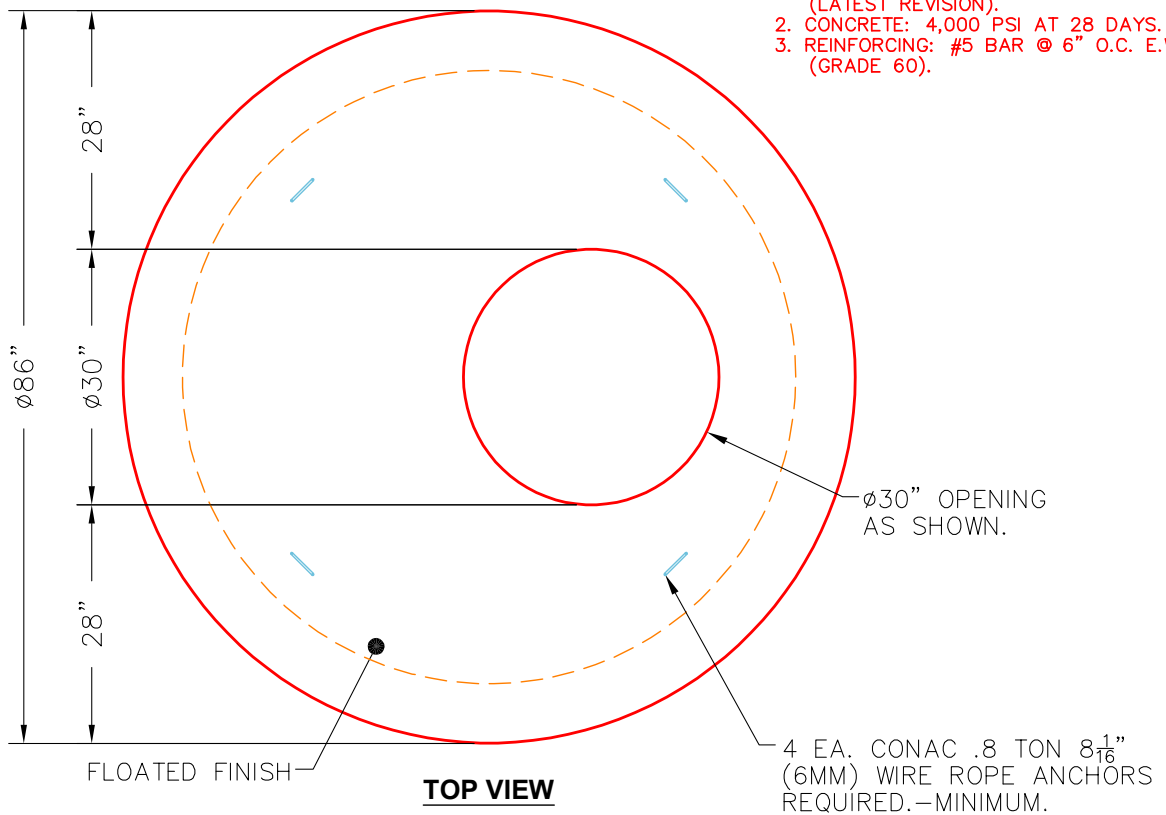
- P5) 30" - CASTING HEIGHT - 4"
- P4) 72" - MH FLAT TOP SPEC. (30" ECC HOLE) F/G - 15"
- P3) 72" - MH RISER T/G - 60"
- P2) 72" - MH RISER T/G - 84"
- P1) 72" - MH BASE T/h - 24"
- 1) ASSEMBLY REQUIRED
- 1) CVSTENCILING
- 3) 72" - Conseal CS-102 1.00"
- 2) Hole - 16

0 lb  
 4661 lb  
 8747 lb  
 12008 lb  
 7398 lb  
 0 lb  
 0 lb  
 0 lb  
 0 lb  
 -----  
 Structure Total: 32814 lb

**Structure Notes:**  
 4" CASTING BY OTHERS  
 .  
 LIFTING ANCHORS TO BE INSTALLED  
 ON THE OUTSIDE OF THE STRUCTURE  
 .  
 ICAST TO INSTALL THE INTERNALS  
 .  
 CONTECH'S LOGO AS WELL AS THE  
 INLET AND OUTLET MUST BE  
 STENCILED ONTO THE STRUCTURE

**NOTES:**

1. MANUFACTURED TO ASTM C-478 (LATEST REVISION).
2. CONCRETE: 4,000 PSI AT 28 DAYS.
3. REINFORCING: #5 BAR @ 6" O.C. E.W. (GRADE 60).



Coating (Int): Coating (Ext):	Seam Up: Flat Seam Dn: Groove	Wall Thickness: 7"	Height (Ext): 15"	Weight (Net): 4661 lb Volume (Net): 1.19cu.yd
----------------------------------	----------------------------------	--------------------	-------------------	--