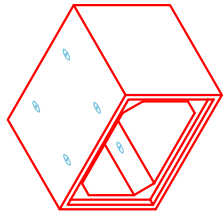




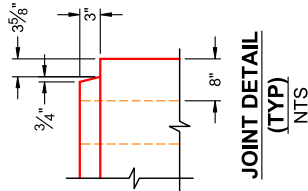
**Structure ID: BC 6 x 4 (Sec C)**

**P1 BC048072-08WLF-9H**

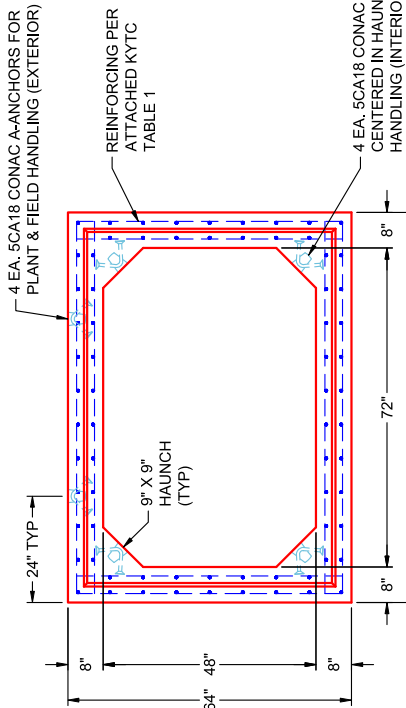
**BOX CULVERT (08W/08F/08T) G/T**



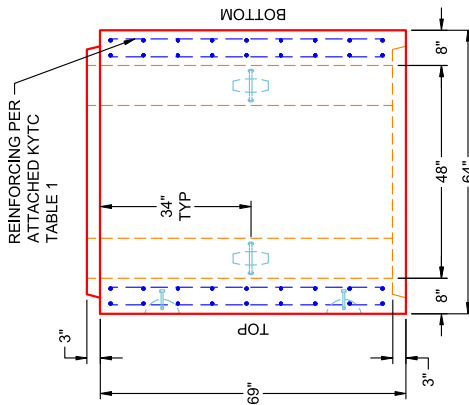
**COMPONENT ISOMETRIC VIEW**



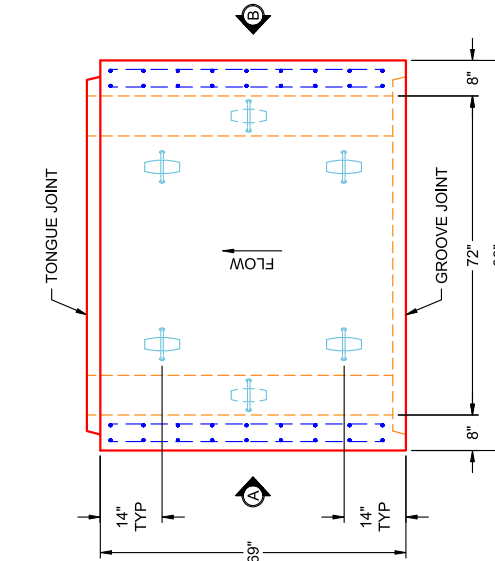
**JOINT DETAIL (TYP) NTS**



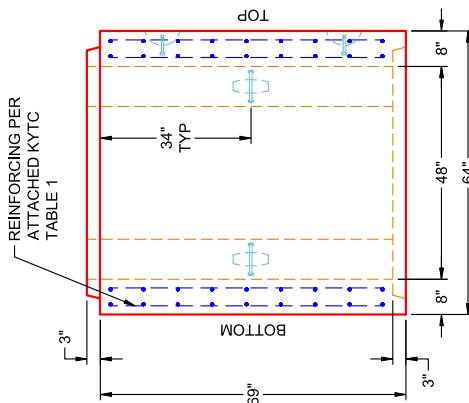
**END VIEW TYPICAL**



**VIEW B SECTION C (UPRIGHT IN MOLD)**



**PLAN VIEW SECTION C (UPRIGHT IN MOLD)**



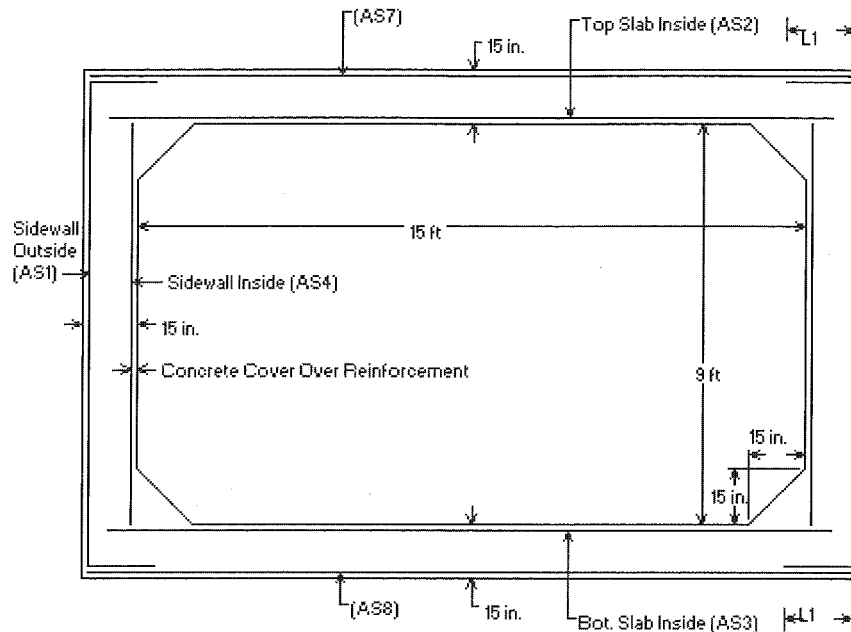
**VIEW A SECTION C (UPRIGHT IN MOLD)**

- GENERAL NOTES:**
- PER SECTION 605 OF KYTC STANDARD SPECS FOR ROAD & BRIDGE CONSTRUCTION
  - LOAD REQUIREMENTS: KY-HL93 (KY TABLE 1)
  - REINFORCEMENT PER ATTACHED KYTC TABLE 1
  - COVER DEPTH: 0' - 4"
  - CONCRETE: 5,000 PSI AT 28 DAYS
  - JOINT SEALANT: 1" BUTYL MASTIC (CS-102) EXTERIOR JOINT WRAP: 12" WIDE (CS-212)
  - WEIGHT: 6' X 4' RCBC = 2,354 LBS / LF (5'-9" LONG SECTION = 13,537 LBS)

PRODUCTION WORK ORDER	
PRODUCT I.D.: BC048072-08WLF-9H	DESCRIPTION: 72" X 48" X 69" BOX CULVERT (8" WALLS & 9" HAUNCH)
PRODUCT VIEW: RIGHT SIDE UP	CUSTOMER: ERNIE DAVIS & SONS MECHANICAL, INC.
PLANT: BEAVER DAM, KY	PROJECT: HUNTER'S RIDGE PH 1
WEIGHT: 13,537 LBS	STRUCTURE: BC 6 X 4 (SEC C)
TOP SECTION JOINT: TONGUE	ORDER NO: 25-2898
BASE SECTION JOINT: GROOVE	PE: J.H. ROSS
QC CHECK INITIALS:	DRAWING: K. CARDWELL
	DATE: 05/29/26
	SCALE: NTS
	PG. 1 OF 1



THIS DRAWING IS THE PROPERTY OF INFRASTRUCTURE PRECAST, INC. ANY USE OR DUPLICATION OF THIS DRAWING WITHOUT PRIOR AUTHORIZATION IS STRICTLY PROHIBITED.



- \*  $\langle L1 \rangle$  is Splice Length
- \* (AS7) is Top Slab Outside
- \* (AS8) is Bottom Slab Outside
- \* See Box Culvert Design Summary Sheet for transverse and distribution reinforcement, as required.
- \* For sidewall thicknesses of 6 in. and above, extend AS2 and AS3 a min. of 4 in. beyond the inside face of the sidewall. For thicknesses less than 6 in., extend AS2 and AS3 at least to within 1-1/2 in. of the outside face of the sidewall.

Notes:

- 1) Other reinforcement schemes that provide the required reinforcement areas at all locations identified in the program output are acceptable.
- 2) Longitudinal reinforcement is not shown for clarity, see AASHTO M259 for longitudinal reinforcement and for additional requirements.

### KY Table 1

Precast Culvert KYHL-93 Design Table

Design Earth Cover, ft		As1	As2	As3	As4	As7	As8	As5	As6
6x4x7	0<2*	0.202	0.421	0.266	0.168	0.192	0.168	0.192	0.192
	2<3	0.251	0.368	0.288	0.168	0.168	0.168		
	3-5	0.19	0.271	0.24	0.168	0.168	0.168		
	10	0.168	0.228	0.234	0.168	0.168	0.168		
	15	0.216	0.306	0.313	0.168	0.168	0.168		
	20	0.275	0.391	0.398	0.168	0.168	0.168		
	25	0.338	0.479	0.487	0.168	0.168	0.168		
	30	0.404	0.571	0.579	0.168	0.168	0.168		
	35	0.473	0.667	0.675	0.168	0.168	0.168		

\*top slab 8"

Design Earth Cover, ft		As1	As2	As3	As4	As7	As8	As5	As6
6x5x7	0<2*	0.192	0.449	0.291	0.168	0.192	0.168	0.192	0.192
	2<3	0.22	0.398	0.316	0.168	0.168	0.168		
	3-5	0.168	0.294	0.262	0.168	0.168	0.168		
	10	0.168	0.243	0.252	0.168	0.168	0.168		
	15	0.188	0.326	0.336	0.168	0.168	0.168		
	20	0.238	0.417	0.427	0.168	0.168	0.168		
	25	0.291	0.512	0.522	0.168	0.168	0.168		
	30	0.347	0.611	0.622	0.168	0.168	0.168		
	35	0.406	0.714	0.725	0.168	0.168	0.168		

\*top slab 8"

Design Earth Cover, ft		As1	As2	As3	As4	As7	As8	As5	As6
6x6x7	0<2*	0.192	0.47	0.311	0.168	0.192	0.168	0.192	0.192
	2<3	0.195	0.421	0.337	0.168	0.168	0.168		
	3-5	0.168	0.311	0.277	0.168	0.168	0.168		
	10	0.168	0.252	0.263	0.168	0.168	0.168		
	15	0.168	0.338	0.349	0.168	0.168	0.168		
	20	0.212	0.432	0.444	0.168	0.168	0.168		
	25	0.259	0.531	0.543	0.168	0.168	0.168		
	30	0.308	0.634	0.647	0.168	0.168	0.168		
	35	0.359	0.741	0.755	0.168	0.168	0.168		

\*top slab 8"

