

Job Name: 25-2898 - Hunter's Ridge Ph.1
 Job Location: Owensboro, KY
 Contractor: Ernie Davis & Sons Mechanical, Inc.

Plant: 100
 5/29/2026 8:45:53 AM

Tech: Jared - A
 PC: A. Chambers



Structure ID: AA-5 - AC-1 - AD-1

P2 MH048LD12ECC

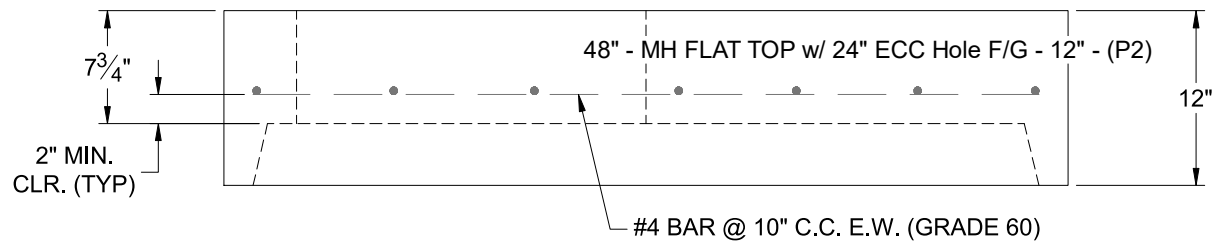
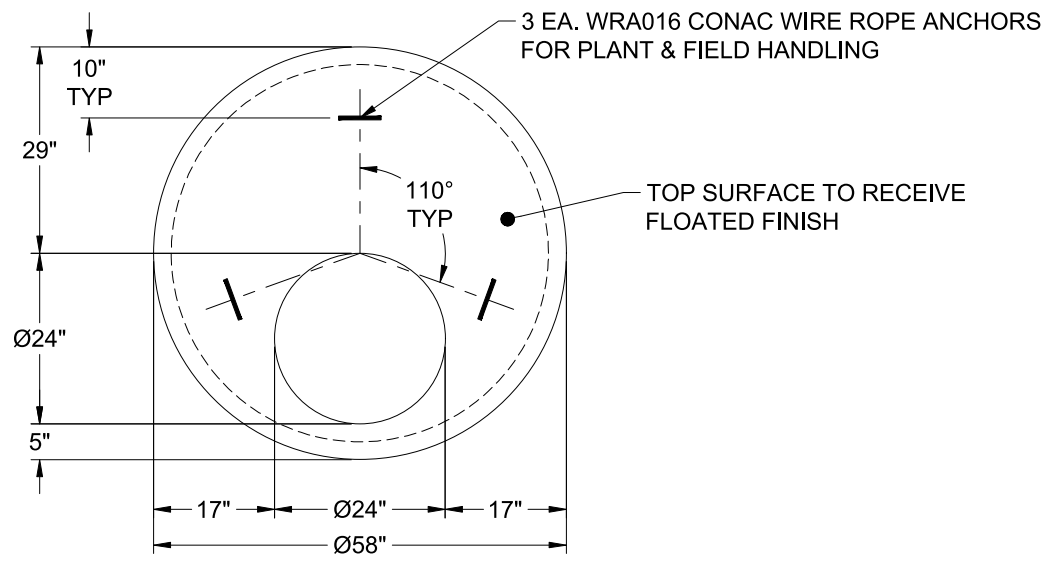
MH FLAT TOP w/ 24" ECC Hole F/G

- P3) 24" - CASTING HEIGHT - 7"
- P2) 48" - MH FLAT TOP w/ 24" ECC Hole F/G - 12"
- P1) 48" - MH BASE Custom Ht T/n - 67"
- 1) 48" - Conseal CS-102 1.00"
- 1) 24" - Conseal CS-102 1.00"
- 2) Hole - 32
- 1) Hole - 22
- 1) Hole - 26
- 5) MH Step ML-10-TDS-NCR - 10"

0 lb
 1561 lb
 4886 lb
 0 lb
 0 lb
 0 lb
 0 lb
 0 lb
 0 lb
 0 lb

 Structure Total: 6447 lb

- Structures Notes:
1. PER ASTM C-478 SPECIFICATIONS
 2. CONCRETE: 4,000 PSI AT 28 DAYS
 3. REINFORCEMENT: #4 BAR @ 10" C.C. E.W. (GRADE 60) - 2" MIN. REBAR CLEARANCE (TYP)
 4. HOE MC-315 FRAME & COVER "STORM" SUPPLIED BY OTHERS
 5. LIFTERS: 3 EA. WRA016 CONAC WIRE ROPE ANCHORS FOR PLANT & FIELD HANDLING
 6. TOP SURFACE TO RECEIVE FLOATED FINISH



Coating (Int): Coating (Ext):	Seam Up: Flat Seam Dn: Groove	Wall Thickness: 5"	Height (Ext): 12"	Weight (Net): 1561 lb Volume (Net): 0.42cu.yd
----------------------------------	----------------------------------	--------------------	-------------------	--------------------------------------------------

Job Name: 25-3579 - Lebanon Rd Clarks Run Trunk Sewer Ph 2
 Job Location: Danville, KY
 Contractor: Hubert Excavating & Contracting

Plant: 100

6/3/2026 3:01:04 PM

Tech: J. Horsley

PC: C. Goff



Structure ID: MH A8

P3 MH048RS72S

MH RISER w/COATING T/G

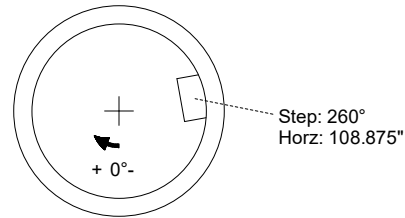
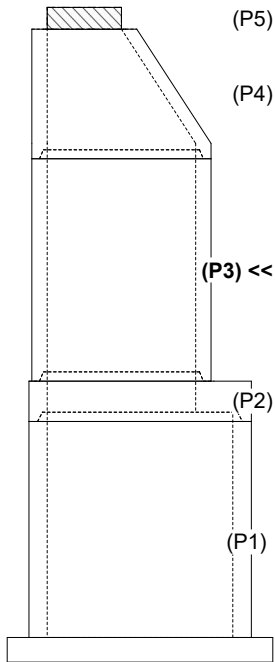
P5) 24" - CASTING HEIGHT - 7"	0 lb
P4) 48" - ECC CONE w/ 24" HOLE, w/Coating F/G - 42"	3116 lb
P3) 48" - MH RISER w/COATING T/G - 72"	5030 lb
P2) 60" - MH Trans. Slab - 48" Hole ECC, w/Coating T/G - 13"	1928 lb
P1) 60" - MH BASE w/FLANGE (08F/07EF) w/Coating T/n - 70"	10274 lb
1) JOINT WRAP - 12" WD x 060" MAC WRAP	0 lb
1) 60" - MH INVERT CHANNEL - FULL HEIGHT	2692 lb
1) SPECIAL EXTERNAL COATING - Carboline 300M	0 lb
1) SECONDARY POUR - Extended Flange	0 lb
2) JOINT WRAP - 12" WD x 048" MAC WRAP	0 lb
1) 60" - Conseal CS-102 1.00" (Double)	0 lb
2) 48" - Conseal CS-102 1.00" (Double)	0 lb
1) 24" - Conseal CS-102 1.00" (Double)	0 lb
2) A-Lok - 1040	2 lb
16) MH Step ML-10-TDS-NCR - 10"	0 lb
308.6 SqFt) Carboline Bitumastic 300M [EXT]	0 lb
Structure Total:	23043 lb

- Structure Notes:**
1. PER ASTM C-478 SPECIFICATIONS
 2. CONCRETE: 4,000 PSI AT 28 DAYS
 3. REINFORCEMENT: PER ASTM A615
 4. CARBOLINE 300M EXTERIOR COATING REQUIRED
 5. STEPS AT 260 DEGREES
 6. HOE MC-375 FRAME & COVER "SANITARY" SUPPLIED BY OTHERS

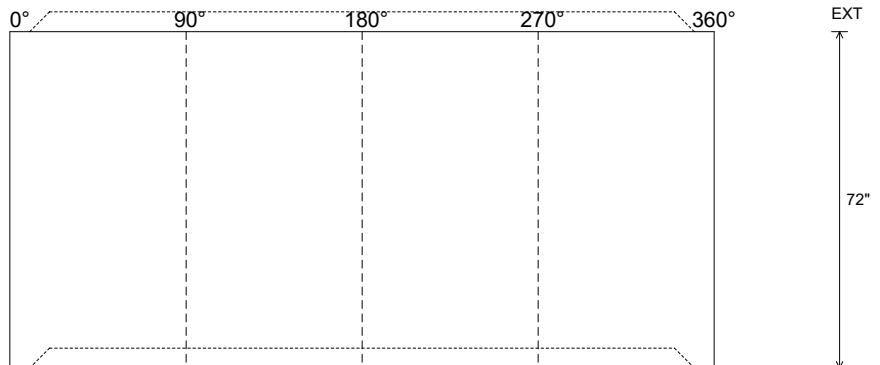
Rim: 905' Rim to Invert: 16.985' Slack: 2.035" Sump: 2.215" Step Position: 260°

Position	Elev	Angle	Ext. (cw)	Pipe	Pipe OD	Connector	Hole	Horz Size	Up ()	Offset
Invert 1										
Invert 2										
Invert 3										
Invert 4										
Invert 5										
Invert 6										
Invert 7										
Invert 8										

RIGHT-SIDE UP VIEW (int. dimensions)



INSIDE WALL DIMENSIONS



Coating (Int):
 Coating (Ext): Carboline Bitumastic 300M

Seam Up: Tongue
 Seam Dn: Groove

Wall Thickness: 5"
 Floor Height: 0"

Height (Int): 72"
 Height (Ext): 72"

Weight (Net): 5030 lb
 Volume (Net): 1.28cu.yd

Job Number:

25-3579

Job Name:

Lebanon Rd Clarks Run Trunk Sewer
Ph 2

Structure:

MH A8

Note:

This Structure Is To Receive An
External Coating of Carboline 300M
(Supplied By iCast)

Job Name: 25-3579 - Lebanon Rd Clarks Run Trunk Sewer Ph 2
 Job Location: Danville, KY
 Contractor: Hubert Excavating & Contracting

Plant: 100

6/3/2026 3:01:27 PM

Tech: J. Horsley

PC: C. Goff



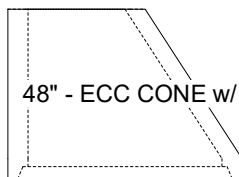
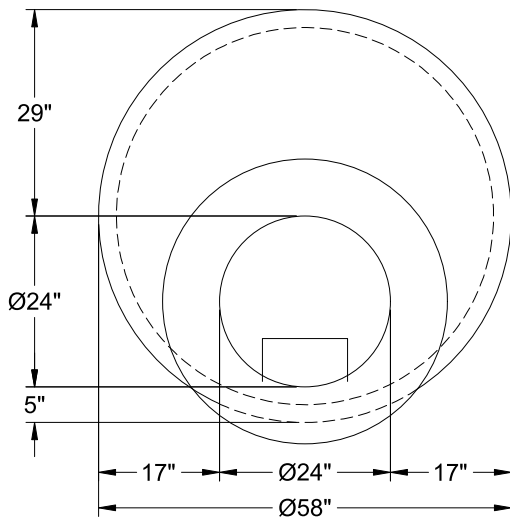
Structure ID: MH A8

P4 MH048CN42SP

ECC CONE w/ 24" HOLE, w/Coating F/G

P5) 24" - CASTING HEIGHT - 7"	0 lb
P4) 48" - ECC CONE w/ 24" HOLE, w/Coating F/G - 42"	3116 lb
P3) 48" - MH RISER w/COATING T/G - 72"	5030 lb
P2) 60" - MH Trans. Slab - 48" Hole ECC, w/Coating T/G - 13"	1928 lb
P1) 60" - MH BASE w/FLANGE (08F/07EF) w/Coating T/n - 70"	10274 lb
1) JOINT WRAP - 12" WD x 060" MAC WRAP	0 lb
1) 60" - MH INVERT CHANNEL - FULL HEIGHT	2692 lb
1) SPECIAL EXTERNAL COATING - Carboline 300M	0 lb
1) SECONDARY POUR - Extended Flange	0 lb
2) JOINT WRAP - 12" WD x 048" MAC WRAP	0 lb
1) 60" - Conseal CS-102 1.00" (Double)	0 lb
2) 48" - Conseal CS-102 1.00" (Double)	0 lb
1) 24" - Conseal CS-102 1.00" (Double)	0 lb
2) A-Lok - 1040	2 lb
16) MH Step ML-10-TDS-NCR - 10"	0 lb
308.6 SqFt) Carboline Bitumastic 300M [EXT]	0 lb
Structure Total:	23043 lb

Structure Notes:
 1. PER ASTM C-478 SPECIFICATIONS
 2. CONCRETE: 4,000 PSI AT 28 DAYS
 3. REINFORCEMENT: PER ASTM A615
 4. CARBOLINE 300M EXTERIOR COATING REQUIRED
 5. STEPS REQUIRED
 6. HOE MC-375 FRAME & COVER "SANITARY" SUPPLIED BY OTHERS



48" - ECC CONE w/ 24" HOLE, w/Coating F/G - 42" - (P4)

Coating (Int): Coating (Ext): Carboline Bitumastic 300M	Seam Up: Flat Seam Dn: Groove	Wall Thickness: 5"	Height (Ext): 42"	Weight (Net): 3116 lb Volume (Net): 0.8cu.yd
------------------------------------------------------------	----------------------------------	--------------------	-------------------	-------------------------------------------------

Job Number:

25-3579

Job Name:

Lebanon Rd Clarks Run Trunk Sewer
Ph 2

Structure:

MH A8

Note:

This Structure Is To Receive An
External Coating of Carboline 300M
(Supplied By iCast)

Job Name: 24-1164 Paddy's Run Flood PS
 Job Location: Louisville, Ky.
 Contractor: Core & Main LP (Lou)

Plant: Beaver Dam, Ky.
 5/18/2026 8:15:55 AM

Tech: S. Felletter
 PC:



Structure ID: Storm MH

P1 MH048LD12S

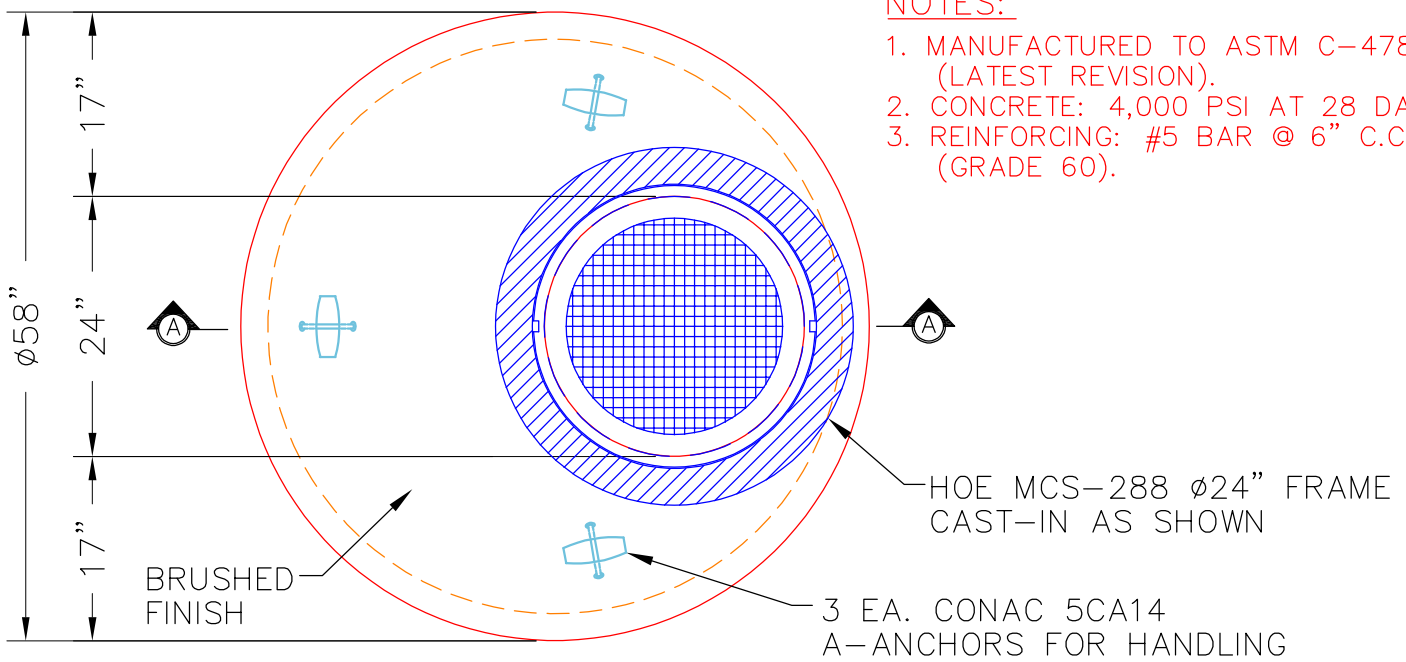
MH FLAT TOP SPECIAL (MCS-288) F/G

- P1) 48" - MH FLAT TOP SPECIAL (MCS-288) F/G - 12"
 1) CASTING - HOE MCS-288 Cover Storm
 1) CASTING - HOE MCS-288 Frame
 1) This Structure Includes a Cast-in Item

1593 lb
 125 lb
 123 lb
 0 lb

 Structure Total: 1841 lb

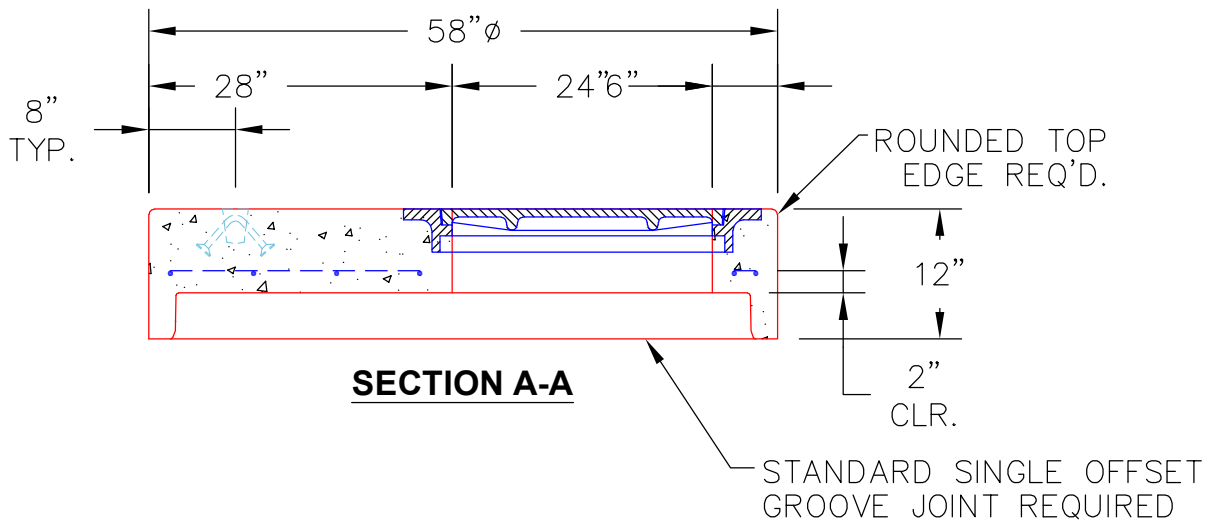
- Structure Notes:** 1. PER ASTM C478 SPECIFICATIONS.
 2. CONCRETE = 4,000 PSI AT 28 DAYS.
 3. NO INVERT CHANNEL.
 4. CASTING BY ICAST (HOE MCS-288). CAST-IN.
 REINFORCING PER ASTM A615 (GRADE 60).
 - TOP SLAB (As .62) #5 BARS AT 6" C.C.E.W.



NOTES:

1. MANUFACTURED TO ASTM C-478 (LATEST REVISION).
2. CONCRETE: 4,000 PSI AT 28 DAYS.
3. REINFORCING: #5 BAR @ 6" C.C. E.W. (GRADE 60).

PLAN VIEW



SECTION A-A

Coating (Int):
 Coating (Ext):

Seam Up: Flat
 Seam Dn: Groove

Wall Thickness: 5"

Height (Ext): 12"

Weight (Net): 1593 lb
 Volume (Net): 0.41cu.yd

Job Name: 24-1164 Paddy's Run Flood PS
 Job Location: Louisville, Ky.
 Contractor: Core & Main LP (Lou)

Plant: Beaver Dam, Ky.
 5/18/2026 8:15:55 AM

Tech: S. Felletter
 PC:



Structure ID: Storm MH

P1 MH048LD12S

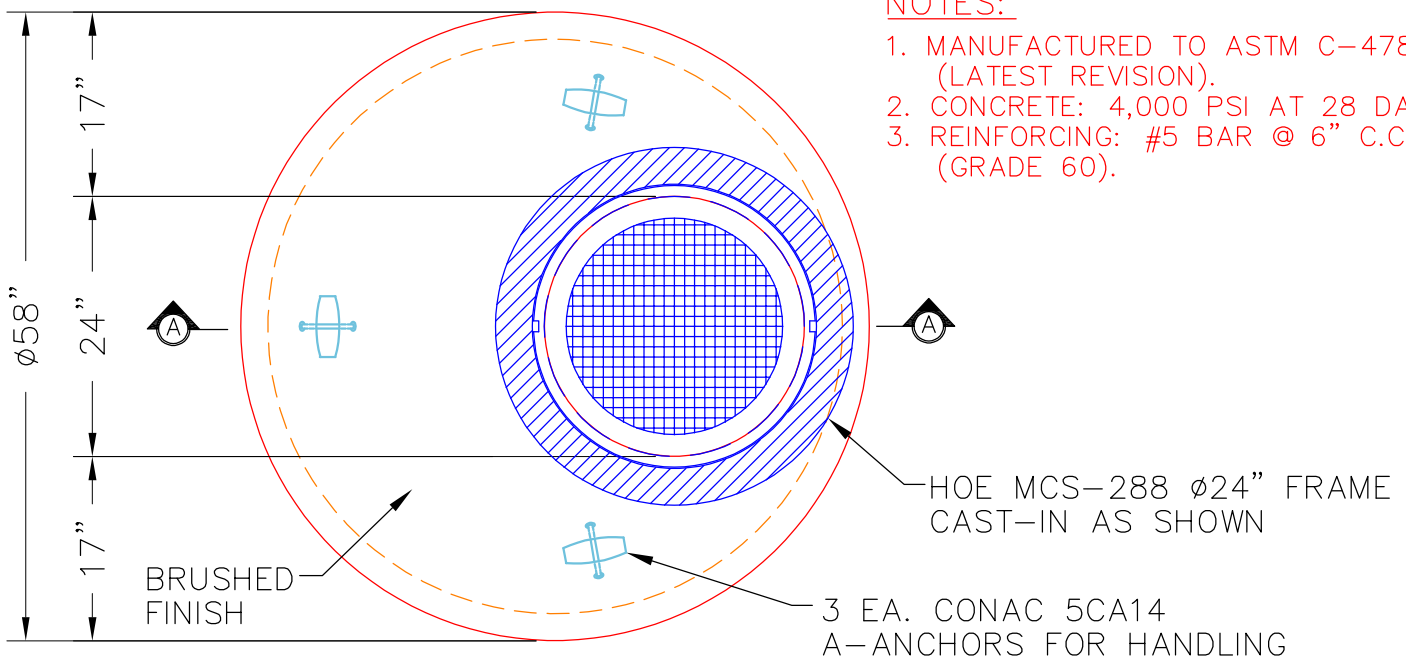
MH FLAT TOP SPECIAL (MCS-288) F/G

- P1) 48" - MH FLAT TOP SPECIAL (MCS-288) F/G - 12"
 1) CASTING - HOE MCS-288 Cover Storm
 1) CASTING - HOE MCS-288 Frame
 1) This Structure Includes a Cast-in Item

1593 lb
 125 lb
 123 lb
 0 lb

 Structure Total: 1841 lb

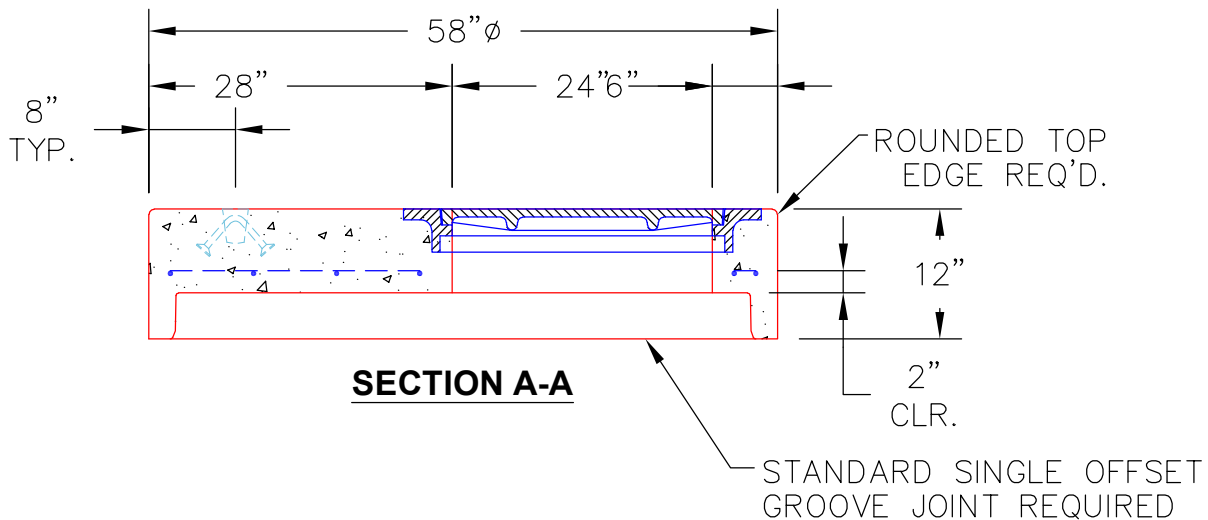
- Structure Notes:** 1. PER ASTM C478 SPECIFICATIONS.
 2. CONCRETE = 4,000 PSI AT 28 DAYS.
 3. NO INVERT CHANNEL.
 4. CASTING BY ICAST (HOE MCS-288). CAST-IN.
 REINFORCING PER ASTM A615 (GRADE 60).
 - TOP SLAB (As .62) #5 BARS AT 6" C.C.E.W.



NOTES:

1. MANUFACTURED TO ASTM C-478 (LATEST REVISION).
2. CONCRETE: 4,000 PSI AT 28 DAYS.
3. REINFORCING: #5 BAR @ 6" C.C. E.W. (GRADE 60).

PLAN VIEW



SECTION A-A

Coating (Int):
 Coating (Ext):

Seam Up: Flat
 Seam Dn: Groove

Wall Thickness: 5"

Height (Ext): 12"

Weight (Net): 1593 lb
 Volume (Net): 0.41cu.yd

Job Name: 24-1164 Paddy's Run Flood PS
 Job Location: Louisville, Ky.
 Contractor: Core & Main LP (Lou)

Plant: Beaver Dam, Ky.
 5/18/2026 8:15:55 AM

Tech: S. Felletter
 PC:



Structure ID: Storm MH

P1 MH048LD12S

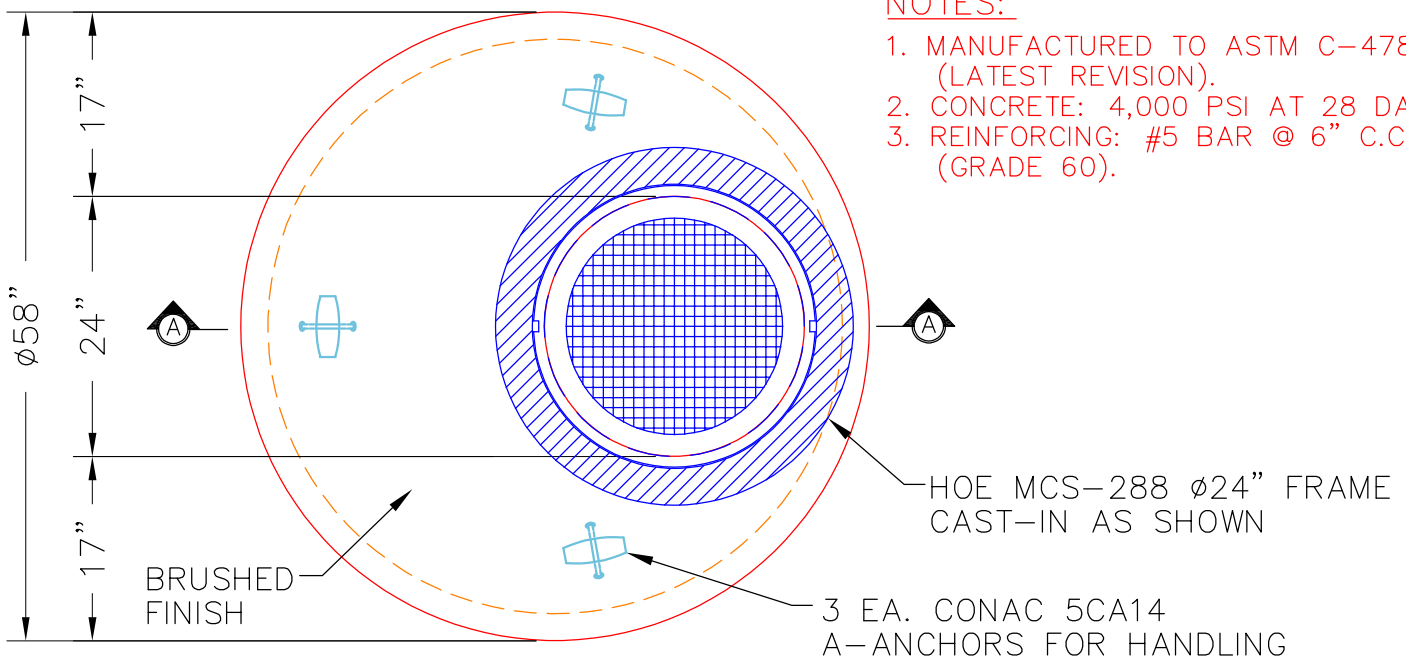
MH FLAT TOP SPECIAL (MCS-288) F/G

- P1) 48" - MH FLAT TOP SPECIAL (MCS-288) F/G - 12"
 1) CASTING - HOE MCS-288 Cover Storm
 1) CASTING - HOE MCS-288 Frame
 1) This Structure Includes a Cast-in Item

1593 lb
 125 lb
 123 lb
 0 lb

 Structure Total: 1841 lb

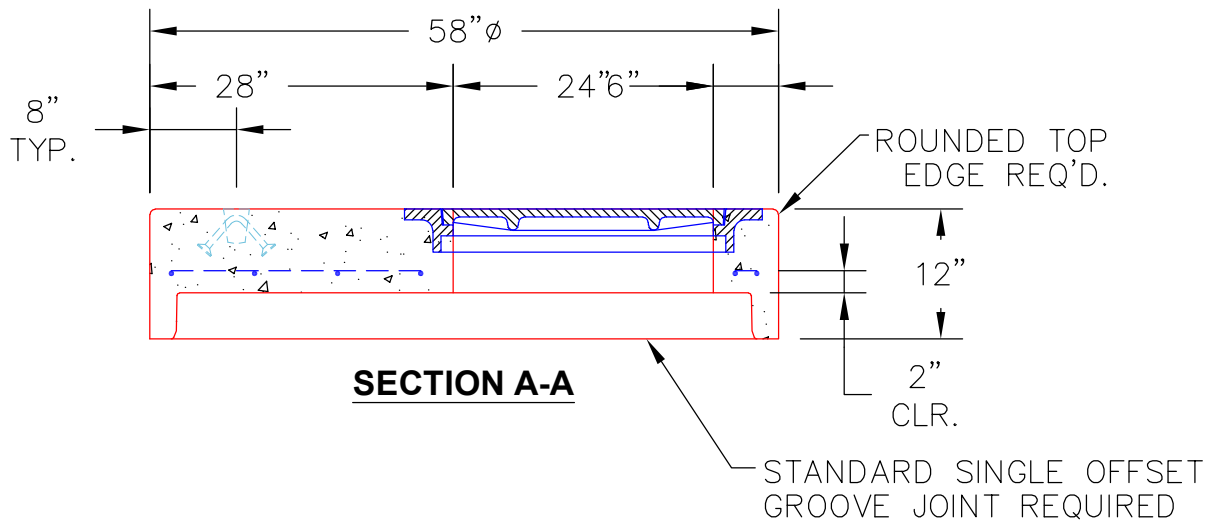
- Structure Notes:** 1. PER ASTM C478 SPECIFICATIONS.
 2. CONCRETE = 4,000 PSI AT 28 DAYS.
 3. NO INVERT CHANNEL.
 4. CASTING BY ICAST (HOE MCS-288). CAST-IN.
 REINFORCING PER ASTM A615 (GRADE 60).
 - TOP SLAB (As .62) #5 BARS AT 6" C.C.E.W.



NOTES:

1. MANUFACTURED TO ASTM C-478 (LATEST REVISION).
2. CONCRETE: 4,000 PSI AT 28 DAYS.
3. REINFORCING: #5 BAR @ 6" C.C. E.W. (GRADE 60).

PLAN VIEW



SECTION A-A

Coating (Int):
 Coating (Ext):

Seam Up: Flat
 Seam Dn: Groove

Wall Thickness: 5"

Height (Ext): 12"

Weight (Net): 1593 lb
 Volume (Net): 0.41cu.yd

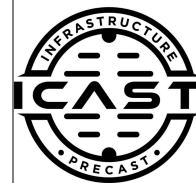
Job Name: 25-3579 - Lebanon Rd Clarks Run Trunk Sewer Ph 2
 Job Location: Danville, KY
 Contractor: Hubert Excavating & Contracting

Plant: 100

6/3/2026 1:48:08 PM

Tech: J. Horsley

PC: C. Goff



Structure ID: MH A7

P1 MH060BAEVF

MH BASE w/FLANGE (08F/07EF) w/Coating T/n

- P6) 24" - CASTING HEIGHT - 7"
- P5) 24" - GRADE RING F/F - 4"
- P4) 48" - ECC CONE w/ 24" HOLE, w/Coating F/G - 42"
- P3) 48" - MH RISER w/COATING T/G - 72"
- P2) 60" - MH Trans. Slab - 48" Hole ECC, w/Coating T/G - 13"
- P1) 60" - MH BASE w/FLANGE (08F/07EF) w/Coating T/n - 60"
- 1) 60" - MH INVERT CHANNEL - FULL HEIGHT
- 1) JOINT WRAP - 12" WD x 060° MAC WRAP
- 1) SPECIAL EXTERNAL COATING - Carboline 300M
- 1) SECONDARY POUR - Extended Flange
- 2) JOINT WRAP - 12" WD x 048" MAC WRAP
- 1) 60" - Conseal CS-102 1.00" (Double)
- 2) 48" - Conseal CS-102 1.00" (Double)
- 2) 24" - Conseal CS-102 1.00" (Double)
- 2) A-Lok - 1040
- 15) MH Step ML-10-TDS-NCR - 10"

- 0 lb
- 270 lb
- 3116 lb
- 5030 lb
- 1928 lb
- 9231 lb
- 2692 lb
- 0 lb
- 0 lb
- 0 lb
- 0 lb
- 0 lb
- 0 lb
- 0 lb
- 2 lb
- 0 lb
- 0 lb
- 0 lb

- Structure Notes:**
1. PER ASTM C-478 SPECIFICATIONS
 2. CONCRETE: 4,000 PSI AT 28 DAYS
 3. REINFORCEMENT: PER ASTM A615
 4. INVERT CHANNEL REQUIRED
 5. CARBOLINE 300M EXTERIOR COATING REQUIRED
 6. STEPS AT 267 DEGREES
 7. HOE MC-375 FRAME & COVER "SANITARY" SUPPLIED BY OTHERS

Structure Total: 22269 lb

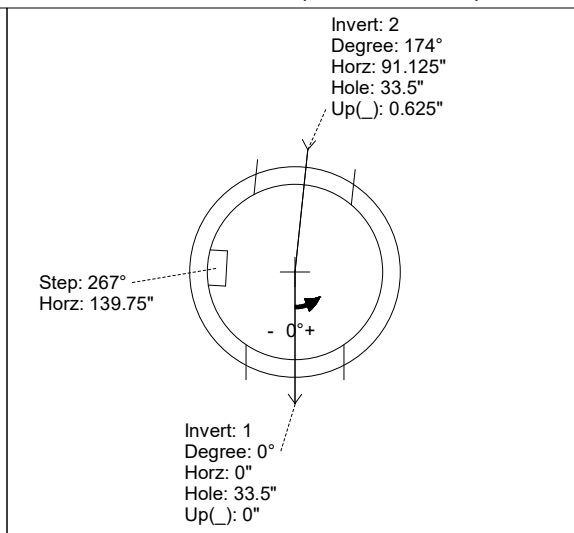
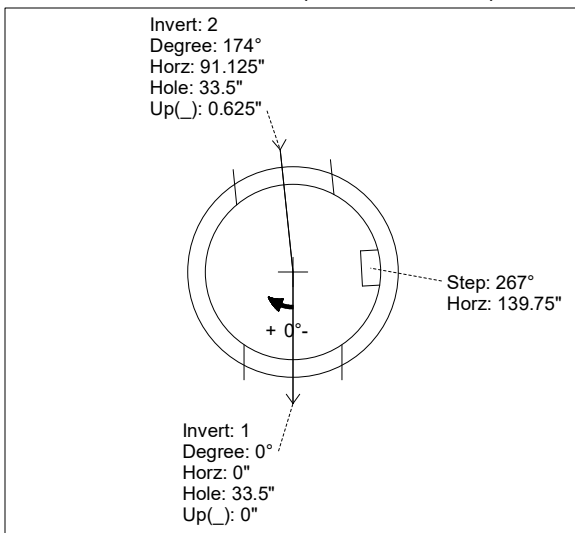
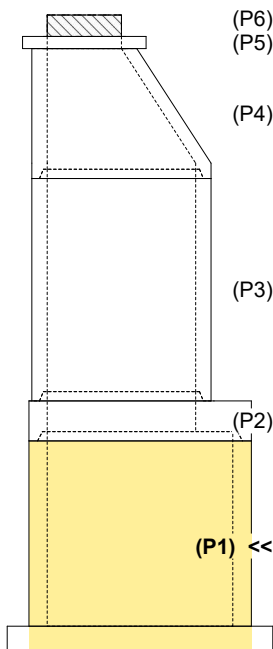
FIRST POUR (BASE): 7,881 LBS
SECOND POUR (FLANGE): 1,350 LBS

Rim: 904.32' Rim to Invert: 16.445' Slack: 1.555" Sump: 2.215" Step Position: 267°

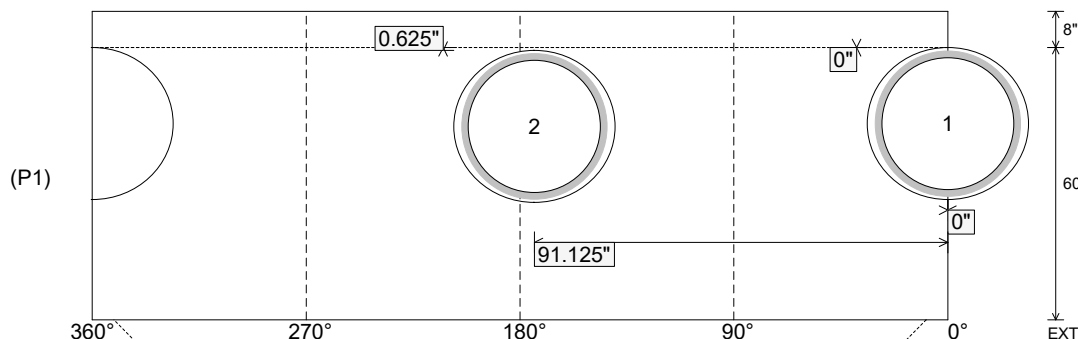
Position	Elev	Angle	Ext. (cw)	Pipe	Pipe OD	Connector	Hole	Horz Size	Up ()	Offset
Invert 1	887.875'	0°	0"	30" PVC F679 (PS115)	32"	A-Lok 1040	33.5"	35.543"	0"	0"
Invert 2	887.925'	174°	109.375"	30" PVC F679 (PS115)	32"	A-Lok 1040	33.5"	35.543"	0.625"	0"
Invert 3										
Invert 4										
Invert 5										
Invert 6										
Invert 7										
Invert 8										

RIGHT-SIDE UP VIEW (int. dimensions)

UPSIDE-DOWN VIEW (int. dimensions)



INSIDE WALL DIMENSIONS



Coating (Int):
Coating (Ext): Carboline Bitumastic 300M

Seam Up: Tongue
Seam Dn: n/a

Wall Thickness: 6"
Floor Height: 8"

Height (Int): 60"
Height (Ext): 68"

Weight (Net): 9231 lb
Volume (Net): 2.36cu.yd

Structure ID: MH A7

P1 MH060BAEVF

MH BASE w/FLANGE (08F/07EF) w/Coating T/n

P6)	24" - CASTING HEIGHT - 7"	0 lb	
P5)	24" - GRADE RING F/F - 4"	270 lb	
P4)	48" - ECC CONE w/ 24" HOLE, w/Coating F/G - 42"	3116 lb	
P3)	48" - MH RISER w/COATING T/G - 72"	5030 lb	
P2)	60" - MH Trans. Slab - 48" Hole ECC, w/Coating T/G - 13"	1928 lb	
P1)	60" - MH BASE w/FLANGE (08F/07EF) w/Coating T/n - 60"	9231 lb	
1)	60" - MH INVERT CHANNEL - FULL HEIGHT	2692 lb	
1)	JOINT WRAP - 12" WD x 060" MAC WRAP	0 lb	
1)	SPECIAL EXTERNAL COATING - Carboline 300M	0 lb	
1)	SECONDARY POUR - Extended Flange	0 lb	
2)	JOINT WRAP - 12" WD x 048" MAC WRAP	0 lb	
1)	60" - Conseal CS-102 1.00" (Double)	0 lb	
2)	48" - Conseal CS-102 1.00" (Double)	0 lb	
2)	24" - Conseal CS-102 1.00" (Double)	0 lb	
2)	A-Lok - 1040	2 lb	
15)	MH Step ML-10-TDS-NCR - 10"	0 lb	
	292.89 SqFt Carboline Bitumastic 300M [EXT]	0 lb	
	Structure Total:	22269 lb	

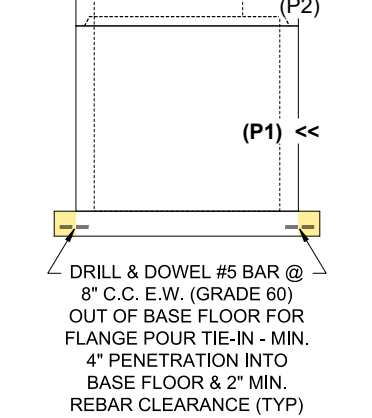
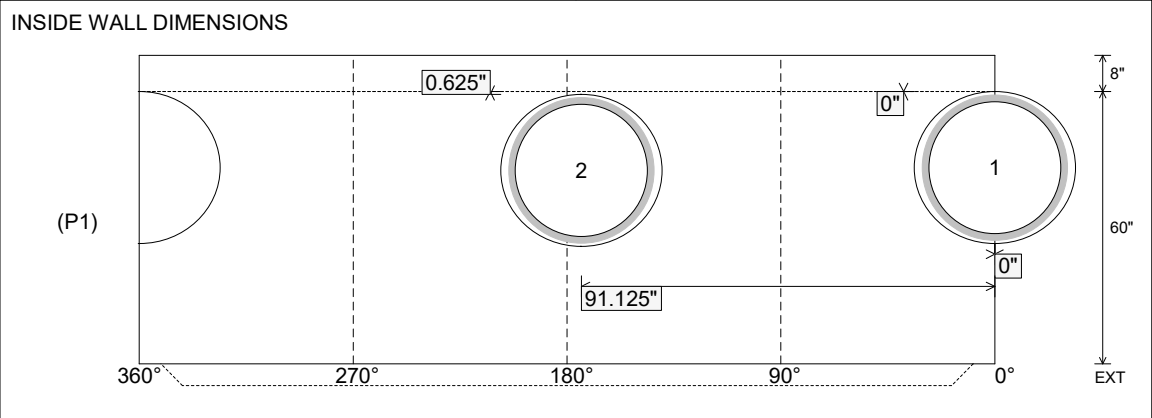
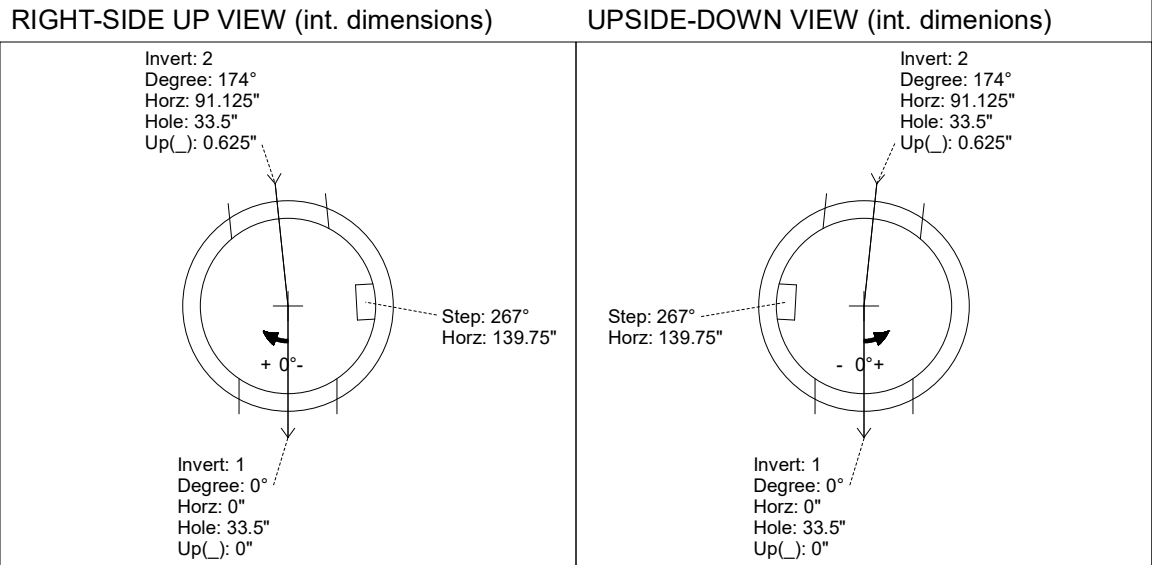
Structure Notes:

- PER ASTM C-478 SPECIFICATIONS
- CONCRETE: 4,000 PSI AT 28 DAYS
- REINFORCEMENT: DRILL & DOWEL #5 BAR @ 8" C.C. E.W. (GRADE 60) FOR FLANGE POUR TIE-IN - 4" MIN. PENETRATION INTO BASE FLOOR & 2" MIN. REBAR CLEARANCE (TYP)
- INVERT CHANNEL REQUIRED
- CARBOLINE 300M EXTERIOR COATING REQUIRED
- STEPS AT 267 DEGREES
- HOE MC-375 FRAME & COVER "SANITARY" SUPPLIED BY OTHERS

FIRST POUR (BASE): 7,881 LBS
SECOND POUR (FLANGE): 1,350 LBS

Rim: 904.32' Rim to Invert: 16.445' Slack: 1.555" Sump: 2.215" Step Position: 267°

Position	Elev	Angle	Ext. (cw)	Pipe	Pipe OD	Connector	Hole	Horz Size	Up ()	Offset
Invert 1	887.875'	0°	0"	30" PVC F679 (PS115)	32"	A-Lok 1040	33.5"	35.543"	0"	0"
Invert 2	887.925'	174°	109.375"	30" PVC F679 (PS115)	32"	A-Lok 1040	33.5"	35.543"	0.625"	0"
Invert 3										
Invert 4										
Invert 5										
Invert 6										
Invert 7										
Invert 8										



Coating (Int): Coating (Ext): Carboline Bitumastic 300M	Seam Up: Tongue Seam Dn: n/a	Wall Thickness: 6" Floor Height: 8"	Height (Int): 60" Height (Ext): 68"	Weight (Net): 9231 lb Volume (Net): 2.36cu.yd
------------------------------------------------------------	---------------------------------	----------------------------------------	----------------------------------------	--------------------------------------------------

Job Name: 25-3579 - Lebanon Rd Clarks Run Trunk Sewer Ph 2
 Job Location: Danville, KY
 Contractor: Hubert Excavating & Contracting

Plant: 100

6/3/2026 1:48:08 PM

Tech: J. Horsley

PC: C. Goff



Structure ID: MH A7

P1 MH060BAEVF

MH BASE w/FLANGE (08F/07EF) w/Coating T/n

P6)	24" - CASTING HEIGHT - 7"	0 lb
P5)	24" - GRADE RING F/F - 4"	270 lb
P4)	48" - ECC CONE w/ 24" HOLE, w/Coating F/G - 42"	3116 lb
P3)	48" - MH RISER w/COATING T/G - 72"	5030 lb
P2)	60" - MH Trans. Slab - 48" Hole ECC, w/Coating T/G - 13"	1928 lb
P1)	60" - MH BASE w/FLANGE (08F/07EF) w/Coating T/n - 60"	9231 lb
1)	60" - MH INVERT CHANNEL - FULL HEIGHT	2692 lb
1)	JOINT WRAP - 12" WD x 060" MAC WRAP	0 lb
1)	SPECIAL EXTERNAL COATING - Carboline 300M	0 lb
1)	SECONDARY POUR - Extended Flange	0 lb
2)	JOINT WRAP - 12" WD x 048" MAC WRAP	0 lb
1)	60" - Conseal CS-102 1.00" (Double)	0 lb
2)	48" - Conseal CS-102 1.00" (Double)	0 lb
2)	24" - Conseal CS-102 1.00" (Double)	0 lb
2)	A-Lok - 1040	2 lb
15)	MH Step ML-10-TDS-NCR - 10"	0 lb
	292.89 SqFt) Carboline Bitumastic 300M [EXT]	0 lb
	Structure Total:	22269 lb

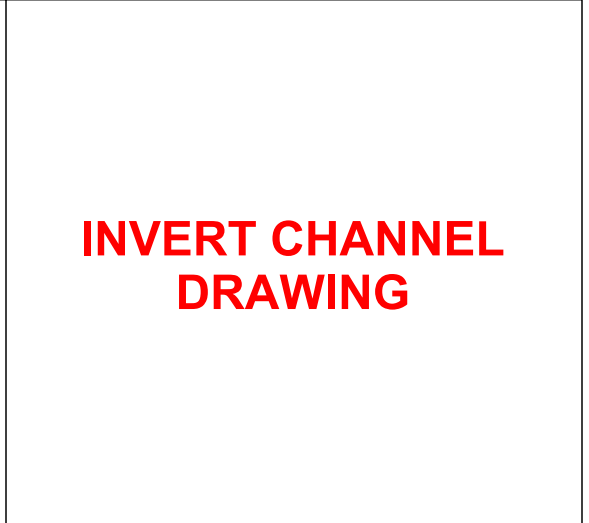
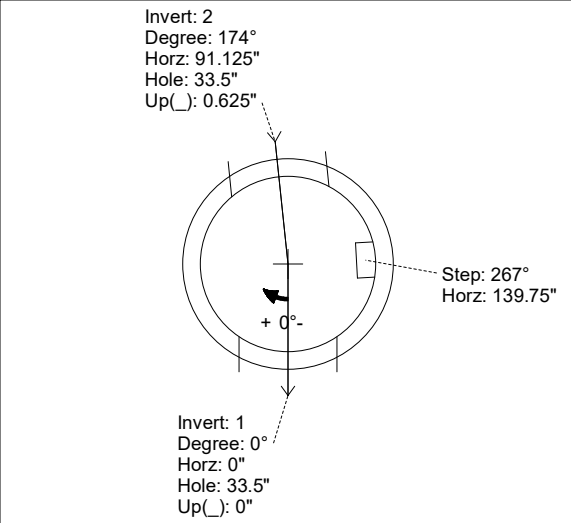
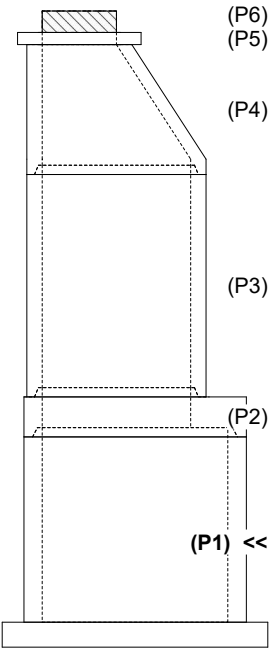
Structure Notes:
 1. PER ASTM C-478 SPECIFICATIONS
 2. CONCRETE: 4,000 PSI AT 28 DAYS
 3. REINFORCEMENT: PER ASTM A615
 4. INVERT CHANNEL REQUIRED
 5. CARBOLINE 300M EXTERIOR COATING REQUIRED
 6. STEPS AT 267 DEGREES
 7. HOE MC-375 FRAME & COVER "SANITARY" SUPPLIED BY OTHERS

Rim: 904.32' Rim to Invert: 16.445' Slack: 1.555" Sump: 2.215" Step Position: 267°

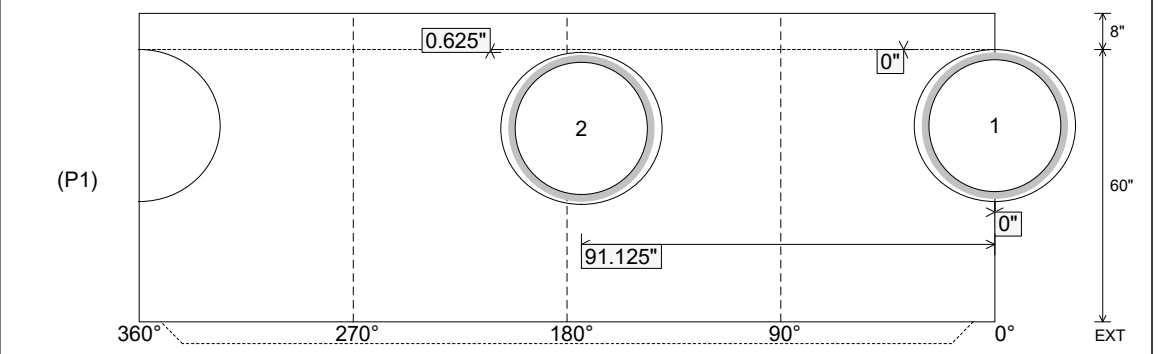
Position	Elev	Angle	Ext. (cw)	Pipe	Pipe OD	Connector	Hole	Horz Size	Up ()	Offset
Invert 1	887.875'	0°	0"	30" PVC F679 (PS115)	32"	A-Lok 1040	33.5"	35.543"	0"	0"
Invert 2	887.925'	174°	109.375"	30" PVC F679 (PS115)	32"	A-Lok 1040	33.5"	35.543"	0.625"	0"
Invert 3										
Invert 4										
Invert 5										
Invert 6										
Invert 7										
Invert 8										

RIGHT-SIDE UP VIEW (int. dimensions)

UPSIDE-DOWN VIEW (int. dimenions)



INSIDE WALL DIMENSIONS



Coating (Int): Coating (Ext): Carboline Bitumastic 300M	Seam Up: Tongue Seam Dn: n/a	Wall Thickness: 6" Floor Height: 8"	Height (Int): 60" Height (Ext): 68"	Weight (Net): 9231 lb Volume (Net): 2.36cu.yd
------------------------------------------------------------	---------------------------------	----------------------------------------	----------------------------------------	--------------------------------------------------

Job Number:

25-3579

Job Name:

Lebanon Rd Clarks Run Trunk Sewer
Ph 2

Structure:

MH A7

Note:

This Structure Is To Receive An
External Coating of Carboline 300M
(Supplied By iCast)

Structure ID: MH A8

P1 MH060BAEVF

MH BASE w/FLANGE (08F/07EF) w/Coating T/n

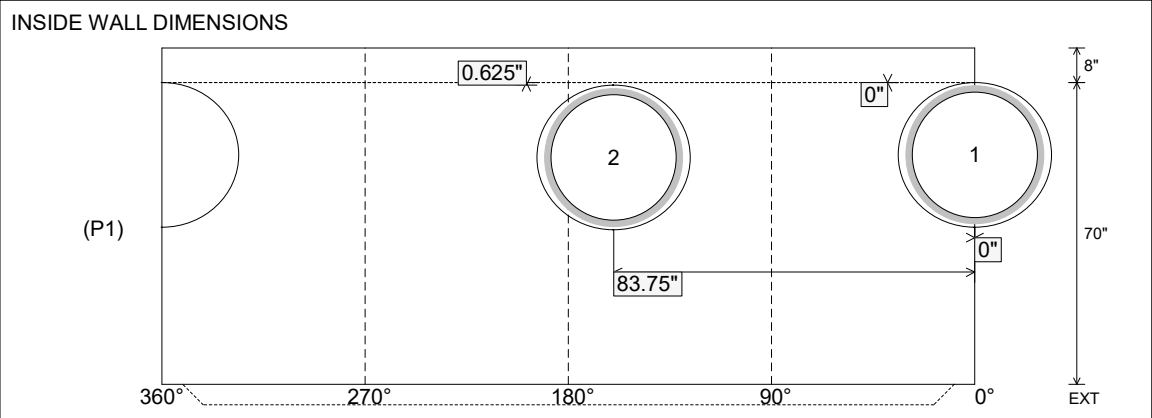
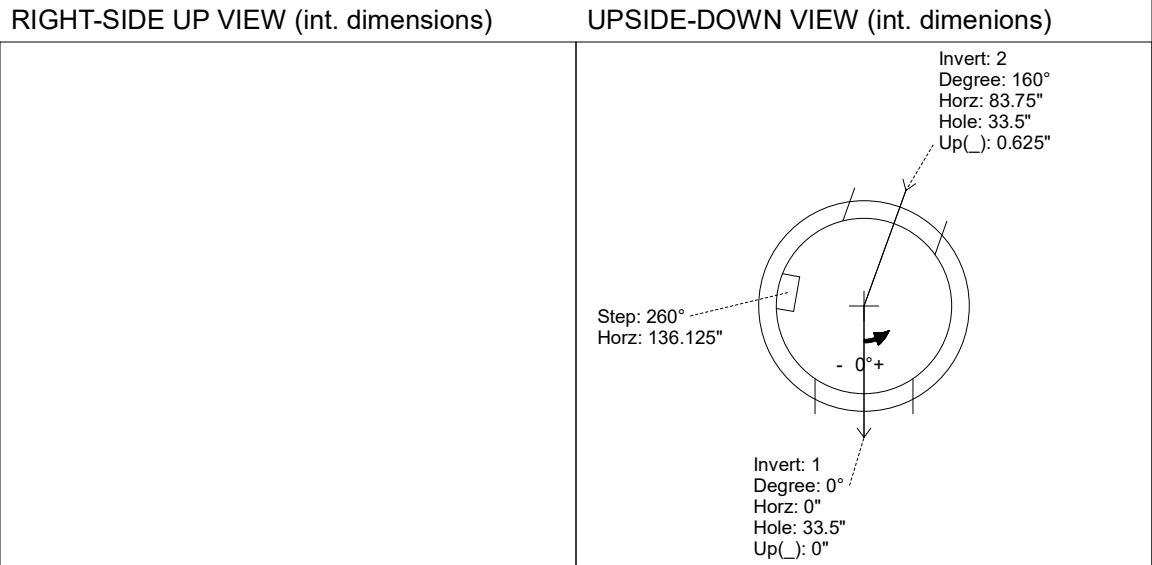
P5) 24" - CASTING HEIGHT - 7" P4) 48" - ECC CONE w/ 24" HOLE, w/Coating F/G - 42" P3) 48" - MH RISER w/COATING T/G - 72" P2) 60" - MH Trans. Slab - 48" Hole ECC, w/Coating T/G - 13" P1) 60" - MH BASE w/FLANGE (08F/07EF) w/Coating T/n - 70" 1) JOINT WRAP - 12" WD x 060" MAC WRAP 1) 60" - MH INVERT CHANNEL - FULL HEIGHT 1) SPECIAL EXTERNAL COATING - Carboline 300M 1) SECONDARY POUR - Extended Flange 2) JOINT WRAP - 12" WD x 048" MAC WRAP 1) 60" - Conseal CS-102 1.00" (Double) 2) 48" - Conseal CS-102 1.00" (Double) 1) 24" - Conseal CS-102 1.00" (Double) 2) A-Lok - 1040 16) MH Step ML-10-TDS-NCR - 10" 308.6 SqFt) Carboline Bitumastic 300M [EXT]	0 lb 3116 lb 5030 lb 1928 lb 10274 lb 0 lb 2692 lb 0 lb 0 lb 0 lb 0 lb 0 lb 0 lb 0 lb 0 lb 2 lb 0 lb 0 lb ----- Structure Total: 23043 lb
-----------------------------------------------------------------------------------------------------------------------------------------------------------------------------------------------------------------------------------------------------------------------------------------------------------------------------------------------------------------------------------------------------------------------------------------------------------------------------------------------------------------------------------------------------------------------------------------------------------------------------------------------------------------------------------------------------------------------	----------------------------------------------------------------------------------------------------------------------------------------------------------------------------------------------------

- Structure Notes:**
1. PER ASTM C-478 SPECIFICATIONS
 2. CONCRETE: 4,000 PSI AT 28 DAYS
 3. REINFORCEMENT: PER ASTM A615
 4. INVERT CHANNEL REQUIRED
 5. CARBOLINE 300M EXTERIOR COATING REQUIRED
 6. STEPS AT 260 DEGREES
 7. HOE MC-375 FRAME & COVER "SANITARY" SUPPLIED BY OTHERS

FIRST POUR (BASE): 8,924 LBS
SECOND POUR (FLANGE): 1,350 LBS

Rim: 905' Rim to Invert: 16.985' Slack: 2.035" Sump: 2.215" Step Position: 260°

Position	Elev	Angle	Ext. (cw)	Pipe	Pipe OD	Connector	Hole	Horz Size	Up ()	Offset
Invert 1	888.015'	0°	0"	30" PVC F679 (PS115)	32"	A-Lok 1040	33.5"	35.543"	0"	0"
Invert 2	888.065'	160°	100.5"	30" PVC F679 (PS115)	32"	A-Lok 1040	33.5"	35.543"	0.625"	0"
Invert 3										
Invert 4										
Invert 5										
Invert 6										
Invert 7										
Invert 8										



Coating (Int): Coating (Ext): Carboline Bitumastic 300M	Seam Up: Tongue Seam Dn: n/a	Wall Thickness: 6" Floor Height: 8"	Height (Int): 70" Height (Ext): 78"	Weight (Net): 10274 lb Volume (Net): 2.62cu.yd
------------------------------------------------------------	---------------------------------	----------------------------------------	----------------------------------------	---------------------------------------------------

Job Name: 25-3579 - Lebanon Rd Clarks Run Trunk Sewer Ph 2
 Job Location: Danville, KY
 Contractor: Hubert Excavating & Contracting

Plant: 100

6/3/2026 1:48:09 PM

Tech: J. Horsley

PC: C. Goff



Structure ID: MH A8

P1 MH060BAEVF

MH BASE w/FLANGE (08F/07EF) w/Coating T/n

- P5) 24" - CASTING HEIGHT - 7"
- P4) 48" - ECC CONE w/ 24" HOLE, w/Coating F/G - 42"
- P3) 48" - MH RISER w/COATING T/G - 72"
- P2) 60" - MH Trans. Slab - 48" Hole ECC, w/Coating T/G - 13"
- P1) 60" - MH BASE w/FLANGE (08F/07EF) w/Coating T/n - 70"
- 1) JOINT WRAP - 12" WD x 060" MAC WRAP
- 1) 60" - MH INVERT CHANNEL - FULL HEIGHT
- 1) SPECIAL EXTERNAL COATING - Carboline 300M
- 1) SECONDARY POUR - Extended Flange
- 2) JOINT WRAP - 12" WD x 048" MAC WRAP
- 1) 60" - Conseal CS-102 1.00" (Double)
- 2) 48" - Conseal CS-102 1.00" (Double)
- 1) 24" - Conseal CS-102 1.00" (Double)
- 2) A-Lok - 1040
- 16) MH Step ML-10-TDS-NCR - 10"
- 308.6 SqFt) Carboline Bitumastic 300M [EXT]

0 lb
 3116 lb
 5030 lb
 1928 lb
 10274 lb
 0 lb
 2692 lb
 0 lb
 0 lb
 0 lb
 0 lb
 0 lb
 0 lb
 0 lb
 2 lb
 0 lb
 0 lb

 Structure Total: 23043 lb

- Structure Notes:**
1. PER ASTM C-478 SPECIFICATIONS
 2. CONCRETE: 4,000 PSI AT 28 DAYS
 3. REINFORCEMENT: DRILL & DOWEL #5 BAR @ 8" C.C. E.W. (GRADE 60) FOR FLANGE POUR TIE-IN - 4" MIN. PENETRATION INTO BASE FLOOR & 2" MIN. REBAR CLEARANCE (TYP)
 4. INVERT CHANNEL REQUIRED
 5. CARBOLINE 300M EXTERIOR COATING REQUIRED
 6. STEPS AT 260 DEGREES
 7. HOE MC-375 FRAME & COVER "SANITARY" SUPPLIED BY OTHERS

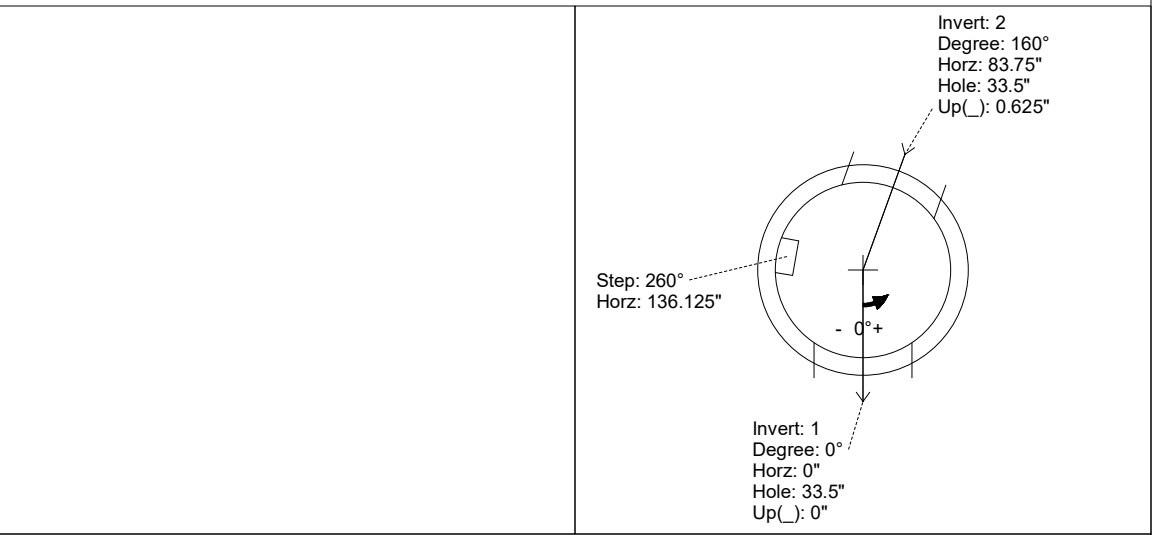
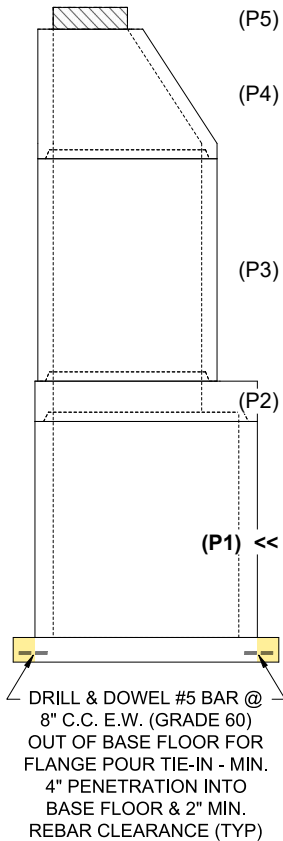
FIRST POUR (BASE): 8,924 LBS
SECOND POUR (FLANGE): 1,350 LBS

Rim: 905' Rim to Invert: 16.985' Slack: 2.035' Sump: 2.215' Step Position: 260°

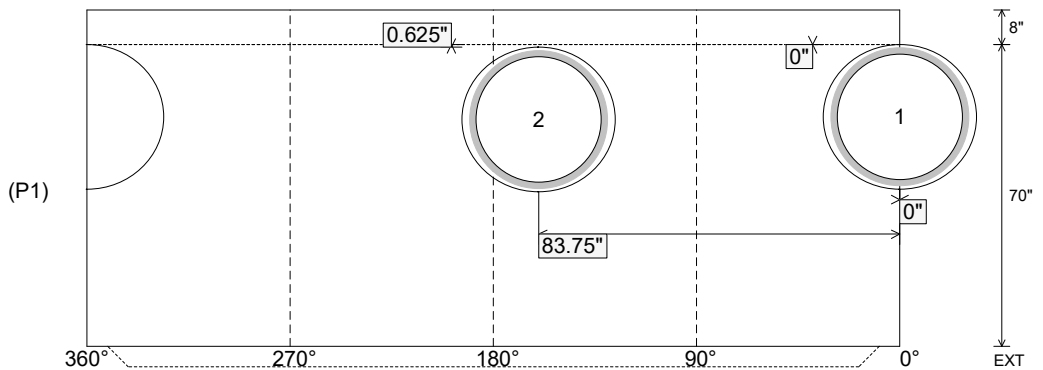
Position	Elev	Angle	Ext. (cw)	Pipe	Pipe OD	Connector	Hole	Horz Size	Up ()	Offset
Invert 1	888.015'	0°	0"	30" PVC F679 (PS115)	32"	A-Lok 1040	33.5"	35.543"	0"	0"
Invert 2	888.065'	160°	100.5"	30" PVC F679 (PS115)	32"	A-Lok 1040	33.5"	35.543"	0.625"	0"
Invert 3										
Invert 4										
Invert 5										
Invert 6										
Invert 7										
Invert 8										

RIGHT-SIDE UP VIEW (int. dimensions)

UPSIDE-DOWN VIEW (int. dimensions)



INSIDE WALL DIMENSIONS



Coating (Int):
 Coating (Ext): Carboline Bitumastic 300M

Seam Up: Tongue
 Seam Dn: n/a

Wall Thickness: 6"
 Floor Height: 8"

Height (Int): 70"
 Height (Ext): 78"

Weight (Net): 10274 lb
 Volume (Net): 2.62cu.yd

Job Name: 25-3579 - Lebanon Rd Clarks Run Trunk Sewer Ph 2
 Job Location: Danville, KY
 Contractor: Hubert Excavating & Contracting

Plant: 100

Tech: J. Horsley

6/3/2026 1:48:09 PM

PC: C. Goff



Structure ID: MH A8

P1 MH060BAEVF

MH BASE w/FLANGE (08F/07EF) w/Coating T/n

P5) 24" - CASTING HEIGHT - 7"	0 lb
P4) 48" - ECC CONE w/ 24" HOLE, w/Coating F/G - 42"	3116 lb
P3) 48" - MH RISER w/COATING T/G - 72"	5030 lb
P2) 60" - MH Trans. Slab - 48" Hole ECC, w/Coating T/G - 13"	1928 lb
P1) 60" - MH BASE w/FLANGE (08F/07EF) w/Coating T/n - 70"	10274 lb
1) JOINT WRAP - 12" WD x 060" MAC WRAP	0 lb
1) 60" - MH INVERT CHANNEL - FULL HEIGHT	2692 lb
1) SPECIAL EXTERNAL COATING - Carboline 300M	0 lb
1) SECONDARY POUR - Extended Flange	0 lb
2) JOINT WRAP - 12" WD x 048" MAC WRAP	0 lb
1) 60" - Conseal CS-102 1.00" (Double)	0 lb
2) 48" - Conseal CS-102 1.00" (Double)	0 lb
1) 24" - Conseal CS-102 1.00" (Double)	0 lb
2) A-Lok - 1040	2 lb
16) MH Step ML-10-TDS-NCR - 10"	0 lb
308.6 SqFt) Carboline Bitumastic 300M [EXT]	0 lb
Structure Total:	23043 lb

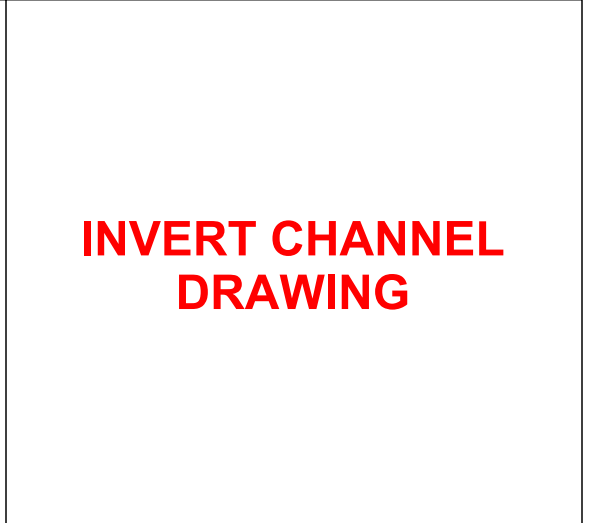
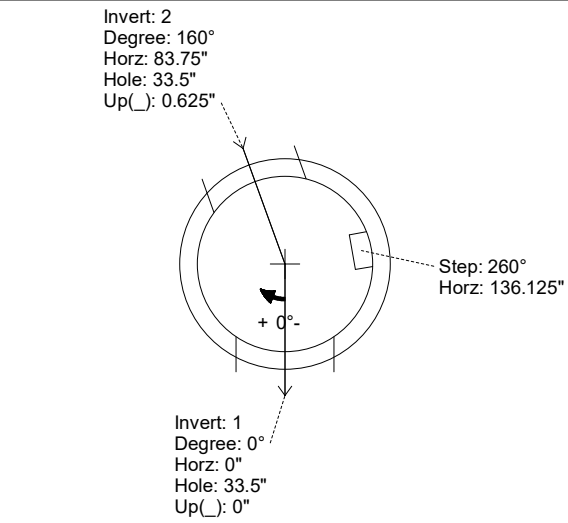
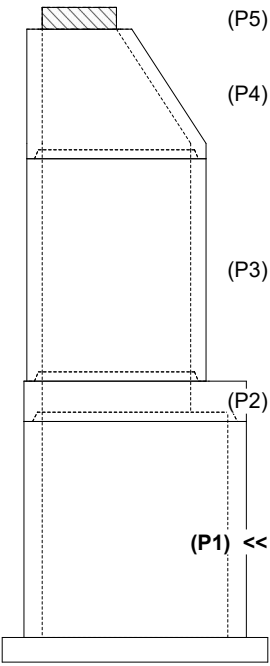
- Structure Notes:**
1. PER ASTM C-478 SPECIFICATIONS
 2. CONCRETE: 4,000 PSI AT 28 DAYS
 3. REINFORCEMENT: PER ASTM A615
 4. INVERT CHANNEL REQUIRED
 5. CARBOLINE 300M EXTERIOR COATING REQUIRED
 6. STEPS AT 260 DEGREES
 7. HOE MC-375 FRAME & COVER "SANITARY" SUPPLIED BY OTHERS

Rim: 905' Rim to Invert: 16.985' Slack: 2.035" Sump: 2.215" Step Position: 260°

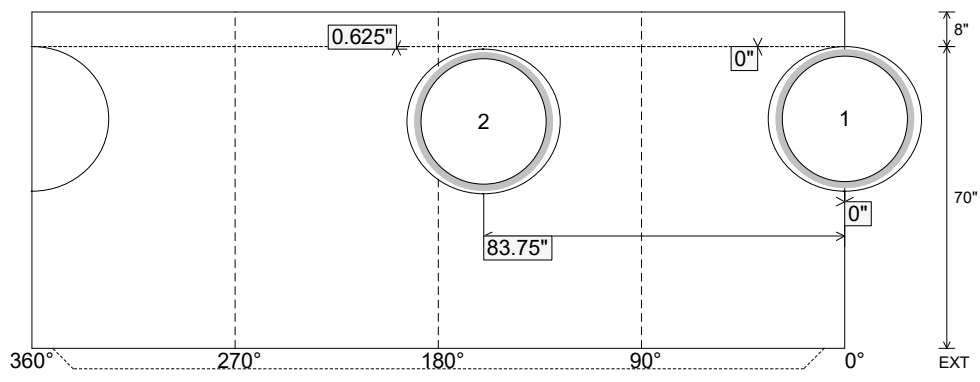
Position	Elev	Angle	Ext. (cw)	Pipe	Pipe OD	Connector	Hole	Horz Size	Up ()	Offset
Invert 1	888.015'	0°	0"	30" PVC F679 (PS115)	32"	A-Lok 1040	33.5"	35.543"	0"	0"
Invert 2	888.065'	160°	100.5"	30" PVC F679 (PS115)	32"	A-Lok 1040	33.5"	35.543"	0.625"	0"
Invert 3										
Invert 4										
Invert 5										
Invert 6										
Invert 7										
Invert 8										

RIGHT-SIDE UP VIEW (int. dimensions)

UPSIDE-DOWN VIEW (int. dimenions)



INSIDE WALL DIMENSIONS



Coating (Int): Coating (Ext): Carboline Bitumastic 300M	Seam Up: Tongue Seam Dn: n/a	Wall Thickness: 6" Floor Height: 8"	Height (Int): 70" Height (Ext): 78"	Weight (Net): 10274 lb Volume (Net): 2.62cu.yd
------------------------------------------------------------	---------------------------------	----------------------------------------	----------------------------------------	---------------------------------------------------

Job Number:

25-3579

Job Name:

Lebanon Rd Clarks Run Trunk Sewer
Ph 2

Structure:

MH A8

Note:

This Structure Is To Receive An
External Coating of Carboline 300M
(Supplied By iCast)

Job Name: 25-3579 - Lebanon Rd Clarks Run Trunk Sewer Ph 2
 Job Location: Danville, KY
 Contractor: Hubert Excavating & Contracting

Plant: 100

6/3/2026 3:01:27 PM

Tech: J. Horsley

PC: C. Goff



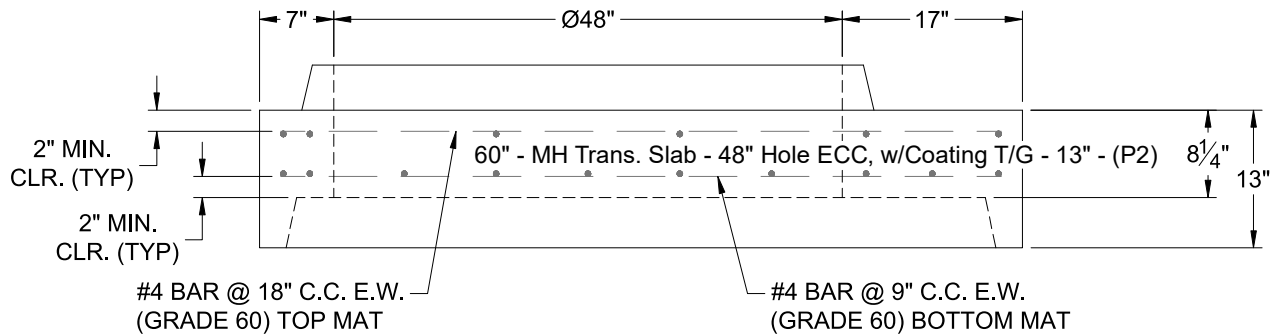
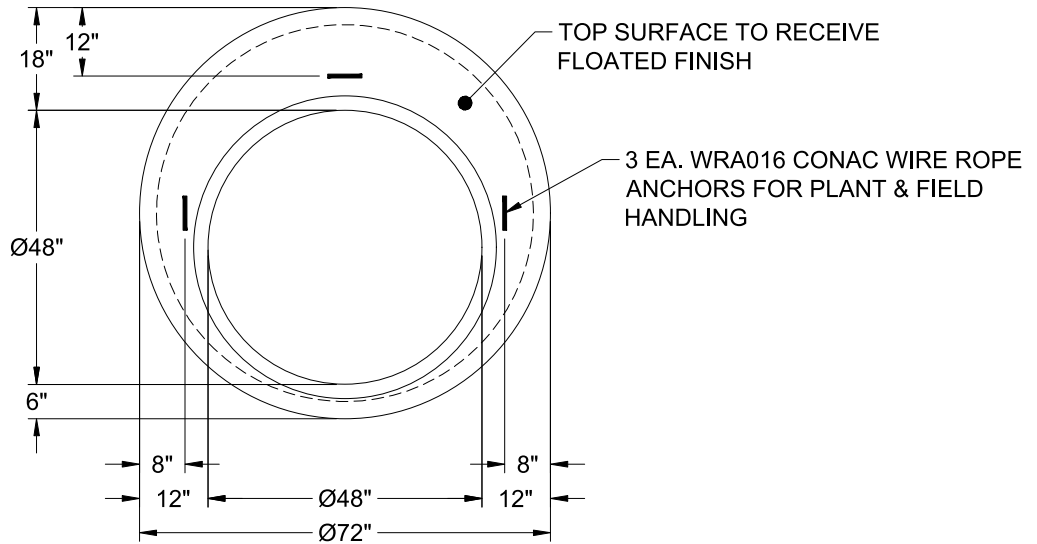
Structure ID: MH A8

P2 MH060TS13-48ECC

MH Trans. Slab - 48" Hole ECC, w/Coating T/G

P5) 24" - CASTING HEIGHT - 7"	0 lb
P4) 48" - ECC CONE w/ 24" HOLE, w/Coating F/G - 42"	3116 lb
P3) 48" - MH RISER w/COATING T/G - 72"	5030 lb
P2) 60" - MH Trans. Slab - 48" Hole ECC, w/Coating T/G - 13"	1928 lb
P1) 60" - MH BASE w/FLANGE (08F/07EF) w/Coating T/n - 70"	10274 lb
1) JOINT WRAP - 12" WD x 060" MAC WRAP	0 lb
1) 60" - MH INVERT CHANNEL - FULL HEIGHT	2692 lb
1) SPECIAL EXTERNAL COATING - Carboline 300M	0 lb
1) SECONDARY POUR - Extended Flange	0 lb
2) JOINT WRAP - 12" WD x 048" MAC WRAP	0 lb
1) 60" - Conseal CS-102 1.00" (Double)	0 lb
2) 48" - Conseal CS-102 1.00" (Double)	0 lb
1) 24" - Conseal CS-102 1.00" (Double)	0 lb
2) A-Lok - 1040	2 lb
16) MH Step ML-10-TDS-NCR - 10"	0 lb
308.6 SqFt) Carboline Bitumastic 300M [EXT]	0 lb
Structure Total:	23043 lb

- Structure Notes:**
- PER ASTM C-478 SPECIFICATIONS
 - CONCRETE: 4,000 PSI AT 28 DAYS
 - REINFORCEMENT - 2" MIN. REBAR CLEARANCE (TYP):
 - TOP MAT: #4 BAR @ 18" C.C. E.W. (GRADE 60)
 - BOTTOM MAT: #4 BAR @ 9" C.C. E.W. (GRADE 60)
 - CARBOLINE 300M EXTERIOR COATING REQUIRED
 - HOE MC-375 FRAME & COVER "SANITARY" SUPPLIED BY OTHERS
 - LIFTERS: 3 EA. WRA016 CONAC WIRE ROPE ANCHORS FOR PLANT & FIELD HANDLING
 - TOP SURFACE TO RECEIVE FLOATED FINISH



Coating (Int): Coating (Ext): Carboline Bitumastic 300M	Seam Up: Tongue Seam Dn: Groove	Wall Thickness: 6"	Height (Ext): 13"	Weight (Net): 1928 lb Volume (Net): 0.49cu.yd
------------------------------------------------------------	------------------------------------	--------------------	-------------------	--------------------------------------------------

Job Number:

25-3579

Job Name:

Lebanon Rd Clarks Run Trunk Sewer
Ph 2

Structure:

MH A8

Note:

This Structure Is To Receive An
External Coating of Carboline 300M
(Supplied By iCast)

Job Name: 25-4508 - Georgetown Commons Target
 Job Location: Georgetown, KY
 Contractor: Winwater Hartford KY Co.

Plant: 100
 5/28/2026 11:25:31 AM

Tech: Jared - F
 PC: A. Chambers



Structure ID: 8 (11)

P1 MH060BAVF

MH BASE Custom Ht T/n

- P3) 24" x 36" - CASTING HEIGHT - 6"
- P2) 60" - MH FLAT TOP w/24"x36" Hole F/G - 13"
- P1) 60" - MH BASE Custom Ht T/n - 47"
- 1) CASTING - HOE 470 SET LV (F/G/H)
- 1) 60" - Conseal CS-102 1.00"
- 1) 24" x 36" - Conseal CS-102 1.00"
- 1) Hole - 38
- 1) Hole - 30

0 lb
 3499 lb
 6660 lb
 394 lb
 0 lb
 0 lb
 0 lb
 0 lb
 0 lb
 Structure Total: 10553 lb

Structure Notes:
 1. PER ASTM C478 SPECIFICATIONS.
 2. CONCRETE = 4,000 PSI AT 28 DAYS.
 3. NO STEPS AND NO INVERT CHANNEL.
 4. CASTING BY ICAST (HOE 470 SET LV (F/G/H)).

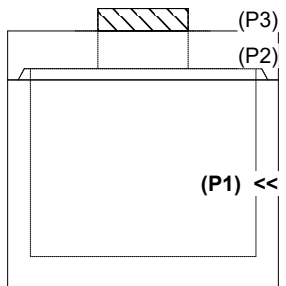
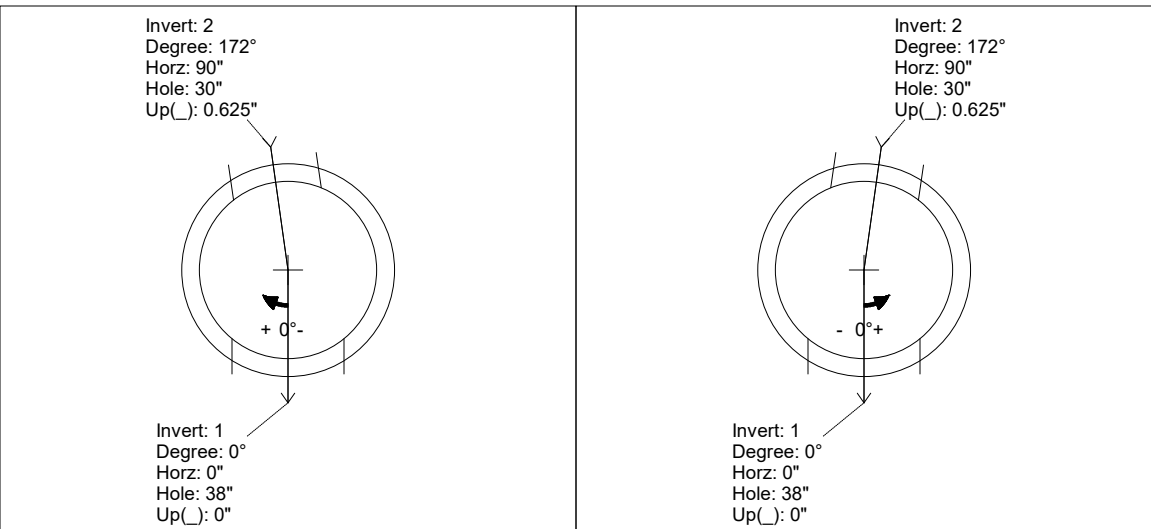
REINFORCING PER ASTM A615 (GRADE 60).
 - TOP SLAB (As .62) #5 BARS AT 6" C.C.E.W..
 - RISER/WALLS (As .18)
 - FLOOR (As .37) #5 BARS AT 10" C.C.E.W.

Rim: 870.9' Rim to Invert: 5.3' Slack: 0.15" Sump: 2.55" Step Position:

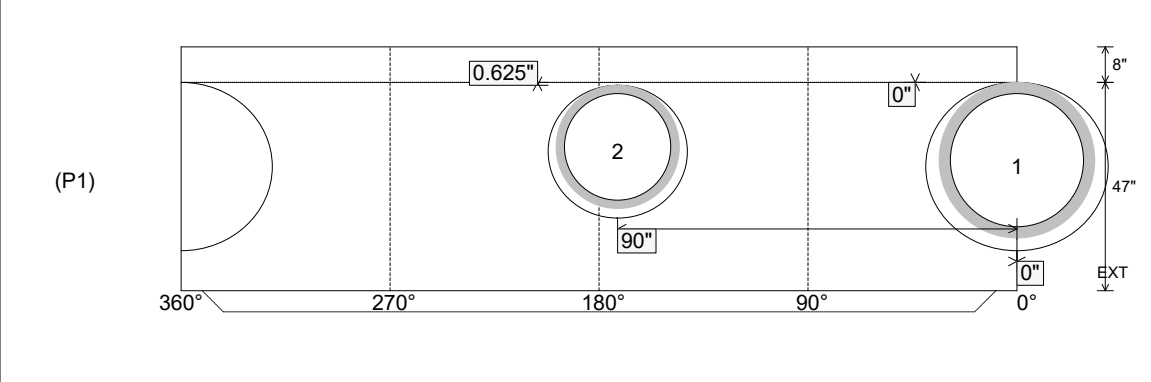
Position	Elev	Angle	Ext. (cw)	Pipe	Pipe OD	Connector	Hole	Horz Size	Up ()	Offset
Invert 1	865.6'	0°	0"	30" HDPE	35.1"	Hole 38	38"	41.151"	0"	0"
Invert 2	865.6'	172°	108.125"	24" HDPE	27.8"	Hole 30	30"	31.416"	0.625"	0"
Invert 3										
Invert 4										
Invert 5										
Invert 6										
Invert 7										
Invert 8										

RIGHT-SIDE UP VIEW (int. dimensions)

UPSIDE-DOWN VIEW (int. dimensions)



INSIDE WALL DIMENSIONS



Coating (Int): Coating (Ext):	Seam Up: Tongue Seam Dn: n/a	Wall Thickness: 6" Floor Height: 8"	Height (Int): 47" Height (Ext): 55"	Weight (Net): 6660 lb Volume (Net): 1.7cu.yd
----------------------------------	---------------------------------	----------------------------------------	----------------------------------------	-------------------------------------------------

Job Name: 25-4508 - Georgetown Commons Target
 Job Location: Georgetown, KY
 Contractor: Winwater Hartford KY Co.

Plant: 100
 5/28/2026 11:25:33 AM

Tech: Jared - F
 PC: A. Chambers



Structure ID: 13

P1 MH072BAVF

MH BASE Custom Ht T/n

- P3) 24" x 36" - CASTING HEIGHT - 6"
- P2) 72" - MH FLAT TOP w/24"x36" Hole F/G - 15"
- P1) 72" - MH BASE Custom Ht T/n - 67"
- 1) CASTING - HOE 470 SET LV (F/G/H)
- 1) 72" - Conseal CS-102 1.00"
- 1) 24" x 36" - Conseal CS-102 1.00"
- 1) Hole - 30
- 1) Hole - 20
- 2) Hole - 38

0 lb
 4530 lb
 11662 lb
 394 lb
 0 lb
 0 lb
 0 lb
 0 lb
 0 lb
 0 lb
 Structure Total: 16586 lb

Structure Notes:
 1. PER ASTM C478 SPECIFICATIONS.
 2. CONCRETE = 4,000 PSI AT 28 DAYS.
 3. NO STEPS AND NO INVERT CHANNEL.
 4. CASTING BY ICAST (HOE 470 SET LV (F/G/H)).

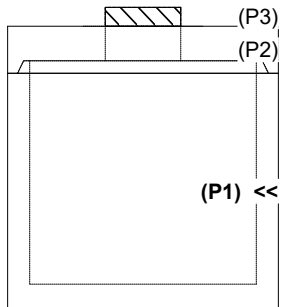
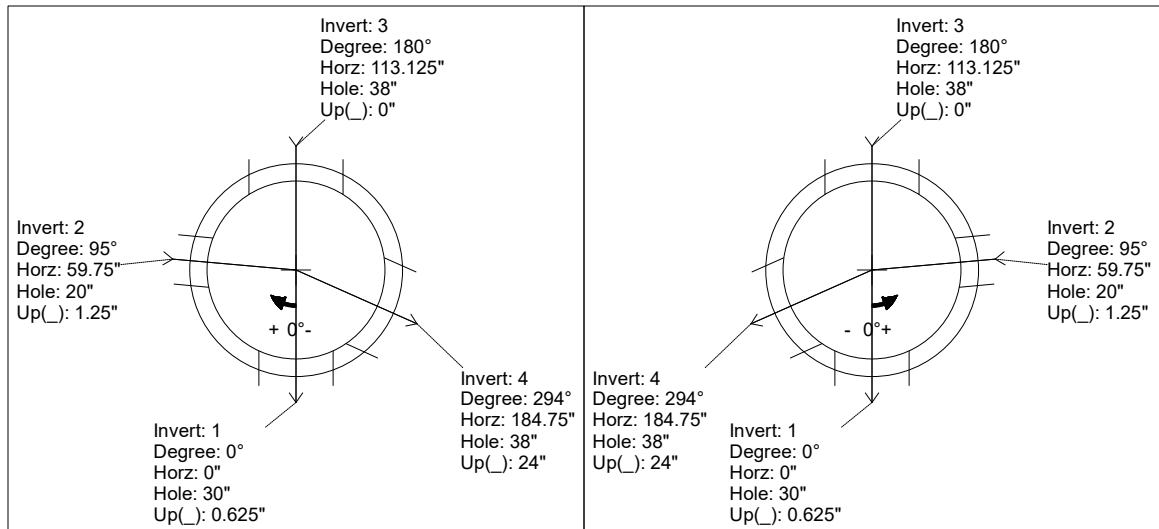
REINFORCING PER ASTM A615 (GRADE 60).
 - TOP SLAB (As .62) #5 BARS AT 6" C.C.E.W..
 - RISER/WALLS (As .18)
 - FLOOR (As .37) #5 BARS AT 10" C.C.E.W.

Rim: 871' Rim to Invert: 7.15' Slack: 0.35" Sump: 2.55" Step Position:

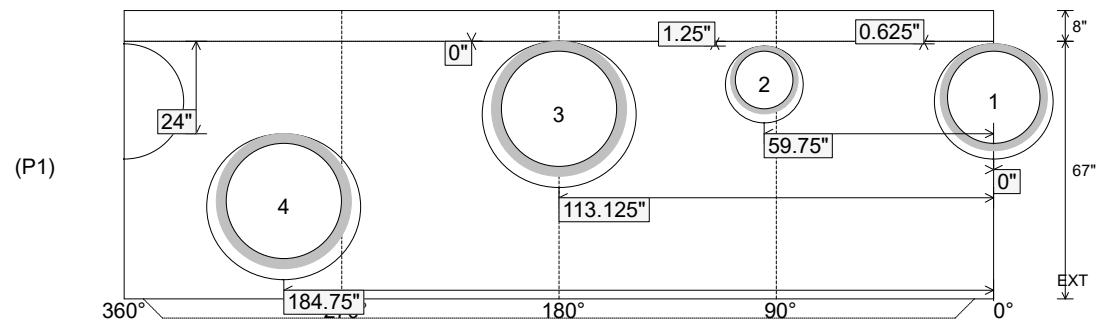
Position	Elev	Angle	Ext. (cw)	Pipe	Pipe OD	Connector	Hole	Horz Size	Up ()	Offset
Invert 1	863.85'	0°	0"	24" HDPE	27.8"	Hole 30	30"	30.944"	0.625"	0"
Invert 2	863.85'	95°	71.25"	15" HDPE	17.6"	Hole 20	20"	20.267"	1.25"	0"
Invert 3	863.85'	180°	135.125"	30" HDPE	35.1"	Hole 38	38"	40.031"	0"	0"
Invert 4	865.85'	294°	220.625"	30" HDPE	35.1"	Hole 38	38"	40.031"	24"	0"
Invert 5										
Invert 6										
Invert 7										
Invert 8										

RIGHT-SIDE UP VIEW (int. dimensions)

UPSIDE-DOWN VIEW (int. dimensions)



INSIDE WALL DIMENSIONS



Coating (Int): Coating (Ext):	Seam Up: Tongue Seam Dn: n/a	Wall Thickness: 7" Floor Height: 8"	Height (Int): 67" Height (Ext): 75"	Weight (Net): 11662 lb Volume (Net): 2.98cu.yd
----------------------------------	---------------------------------	----------------------------------------	----------------------------------------	---------------------------------------------------

Job Name: 26-2366 840323 Churchill Downs Skye Terrace Improvements
 Job Location: Louisville, KY
 Contractor: Contech Engineering Solutions

Plant: Beaver Dam
 5/20/2026 10:09:00 AM

Tech: S. Felletter
 PC: C. Goff



Structure ID: 10-CS-6

P4 MH072LD15-30ECC

MH FLAT TOP SPEC. (30" ECC HOLE) F/G

- P5) 30" - CASTING HEIGHT - 4"
- P4) 72" - MH FLAT TOP SPEC. (30" ECC HOLE) F/G - 15"
- P3) 72" - MH RISER T/G - 60"
- P2) 72" - MH RISER T/G - 84"
- P1) 72" - MH BASE T/h - 24"
- 1) ASSEMBLY REQUIRED
- 1) CVSTENCILING
- 3) 72" - Conseal CS-102 1.00"
- 2) Hole - 16

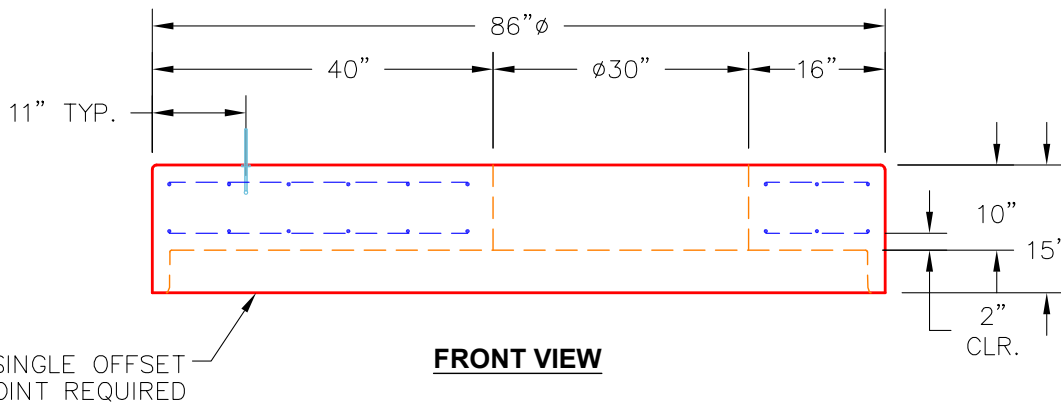
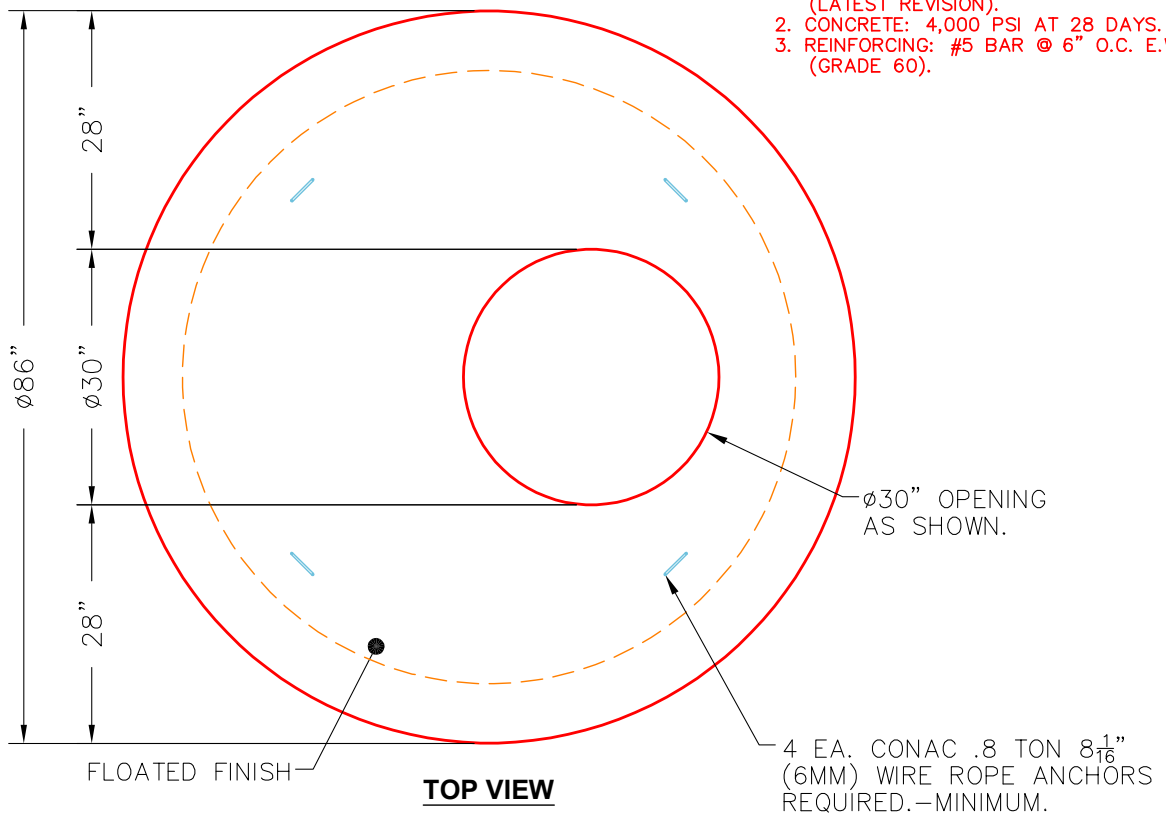
0 lb
 4661 lb
 8747 lb
 12008 lb
 7398 lb
 0 lb
 0 lb
 0 lb
 0 lb

 Structure Total: 32814 lb

Structure Notes:
 4" CASTING BY OTHERS
 LIFTING ANCHORS TO BE INSTALLED ON THE OUTSIDE OF THE STRUCTURE
 ICAST TO INSTALL THE INTERNALS
 CONTECH'S LOGO AS WELL AS THE INLET AND OUTLET MUST BE STENCILED ONTO THE STRUCTURE

NOTES:

1. MANUFACTURED TO ASTM C-478 (LATEST REVISION).
2. CONCRETE: 4,000 PSI AT 28 DAYS.
3. REINFORCING: #5 BAR @ 6" O.C. E.W. (GRADE 60).



Coating (Int): Coating (Ext):	Seam Up: Flat Seam Dn: Groove	Wall Thickness: 7"	Height (Ext): 15"	Weight (Net): 4661 lb Volume (Net): 1.19cu.yd
----------------------------------	----------------------------------	--------------------	-------------------	--------------------------------------------------

Job Name: 25-4508 - Georgetown Commons Target
 Job Location: Georgetown, KY
 Contractor: Winwater Hartford KY Co.

Plant: 100
 5/28/2026 6:53:44 PM

Tech: Jared - F
 PC: A. Chambers



Structure ID: 117 (34)

P2 BX2424-08R24

BOX RISER 8inW F/G

- P3) 24" x 24" - CASTING HEIGHT - 4"
- P2) 24" x 24" - BOX RISER 8inW F/G - 24"
- P1) 24" x 24" - BOX BASE 8inW, 8inF, Variable Ht T/n - 47"
- 1) CASTING - HOE 280T F/G
- 2) 24" x 24" - Conseal CS-102 1.00"
- 1) Hole - 16

0 lb
 2062 lb
 4978 lb
 182 lb
 0 lb
 0 lb

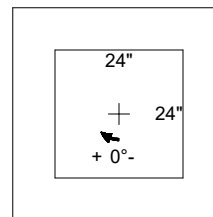
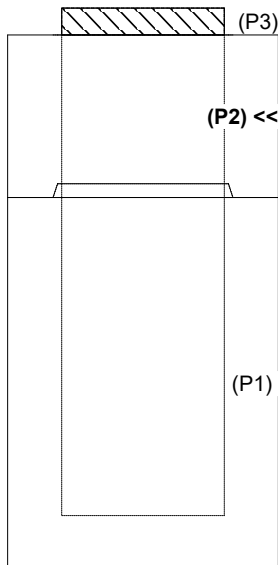
 Structure Total: 7222 lb

Structure Notes: 1. PER ASTM C913 SPECIFICATIONS.
 2. CONCRETE = 4,000 PSI AT 28 DAYS.
 3. NO STEPS AND NO INVERT CHANNEL.
 4. CASTING BY ICAST (HOE 280T F/G)
 REINFORCING PER ASTM A615 (GRADE 60).
 - WALLS (As .12) #5 BARS AT 12" C.C.E.W.
 - FLOOR (As .12) #5 BARS AT 12" C.C.E.W.

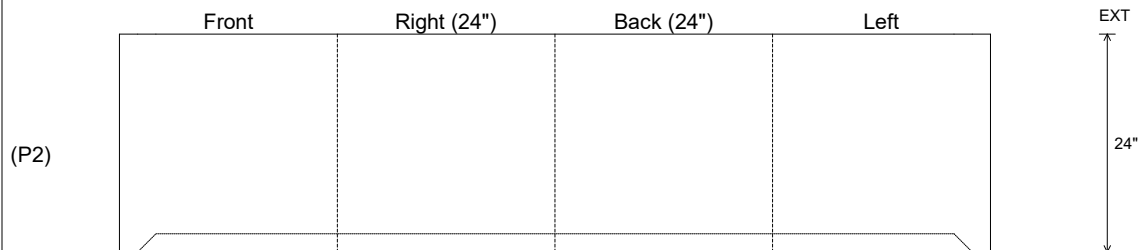
Rim: 874.6' Rim to Invert: 6.2' Slack: 0.65" Sump: 1.25" Step Position:

Position	Elev	Angle	Ext. (cw)	Pipe	Pipe OD	Connector	Hole	Horz Size	Up (L)	Offset
Invert 1										
Invert 2										
Invert 3										
Invert 4										
Invert 5										
Invert 6										
Invert 7										
Invert 8										

RIGHT-SIDE UP VIEW (int. dimensions)



INSIDE WALL DIMENSIONS



Coating (Int): Coating (Ext):	Seam Up: Flat Seam Dn: Groove	Wall Thickness: 8" Floor Height: 0"	Height (Int): 24" Height (Ext): 24"	Weight (Net): 2062 lb Volume (Net): 0.53cu.yd
----------------------------------	----------------------------------	----------------------------------------	----------------------------------------	--------------------------------------------------

Job Name: 25-2898 - Hunter's Ridge Ph.1	Plant: 100	Tech: Jared - A	
Job Location: Owensboro, KY	5/29/2026 8:44:09 AM	PC: A. Chambers	
Contractor: Ernie Davis & Sons Mechanical, Inc.			

Structure ID: BB-2

P1 BX2436-08BVF

BOX BASE 8inW, 8inF, Variable Ht F/n

P2) 24" x 36" - CASTING HEIGHT - 6"
P1) 24" x 36" - BOX BASE 8inW, 8inF, Variable Ht F/n - 32"
1) 24" x 36" - Conseal CS-102 1.00"
1) Hole - 22

0 lb
4406 lb
0 lb
0 lb

Structure Total: 4406 lb

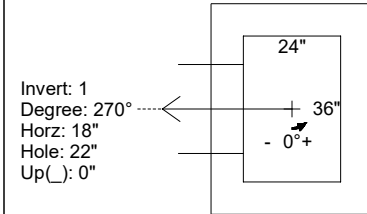
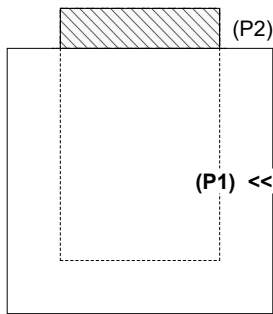
Structures Notes:
1. PER ASTM C-913 SPECIFICATIONS
2. CONCRETE: 4,000 PSI AT 28 DAYS
3. REINFORCEMENT: #5 BAR @ 12" C.C. E.W. (GRADE 60) - 2" MIN. REBAR CLEARANCE (TYP)
4. NO STORM INVERT
5. NO STEPS
6. HOE-525 FRAME, GRATE, & CURB HOOD SUPPLIED BY OTHERS

Rim: 428.19' Rim to Invert: 3' Slack: 0.25" Sump: 2.25" Step Position:

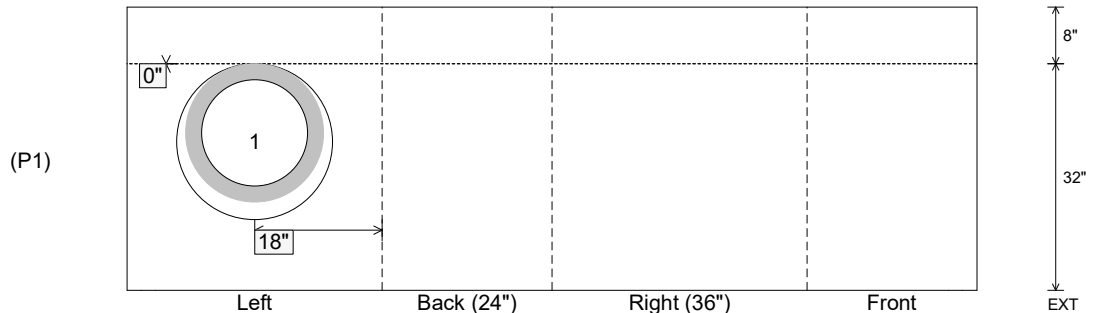
Position	Elev	Angle	Ext. (cw)	Pipe	Pipe OD	Connector	Hole	Horz Size	Up ()	Offset
Invert 1	425.19'	270°	26"	15" RCP B WALL	19.5"	Hole 22	22"	22"	0"	0"
Invert 2										
Invert 3										
Invert 4										
Invert 5										
Invert 6										
Invert 7										
Invert 8										

RIGHT-SIDE UP VIEW (int. dimensions)

UPSIDE-DOWN VIEW (int. dimenions)



INSIDE WALL DIMENSIONS



Coating (Int): Coating (Ext):	Seam Up: Flat Seam Dn: n/a	Wall Thickness: 8" Floor Height: 8"	Height (Int): 32" Height (Ext): 40"	Weight (Net): 4406 lb Volume (Net): 1.12cu.yd
----------------------------------	-------------------------------	----------------------------------------	----------------------------------------	--------------------------------------------------

Job Name: 25-2898 - Hunter's Ridge Ph.1	Plant: 100	Tech: Jared - A	
Job Location: Owensboro, KY	5/29/2026 8:44:07 AM	PC: A. Chambers	
Contractor: Ernie Davis & Sons Mechanical, Inc.			

Structure ID: AC-2

P1 BX2436-08BVF

BOX BASE 8inW, 8inF, Variable Ht F/n

P2) 24" x 36" - CASTING HEIGHT - 6"
P1) 24" x 36" - BOX BASE 8inW, 8inF, Variable Ht F/n - 32"
1) 24" x 36" - Conseal CS-102 1.00"
1) Hole - 22

0 lb
4406 lb
0 lb
0 lb

Structure Total: 4406 lb

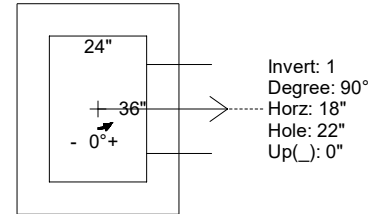
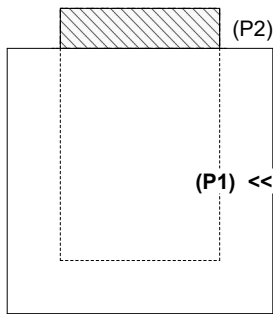
- Structures Notes:**
- PER ASTM C-913 SPECIFICATIONS
 - CONCRETE: 4,000 PSI AT 28 DAYS
 - REINFORCEMENT: #5 BAR @ 12" C.C. E.W. (GRADE 60) - 2" MIN. REBAR CLEARANCE (TYP)
 - NO STORM INVERT
 - NO STEPS
 - HOE-525 FRAME, GRATE, & CURB HOOD SUPPLIED BY OTHERS

Rim: 442.42' Rim to Invert: 3' Slack: 0.25" Sump: 2.25" Step Position:

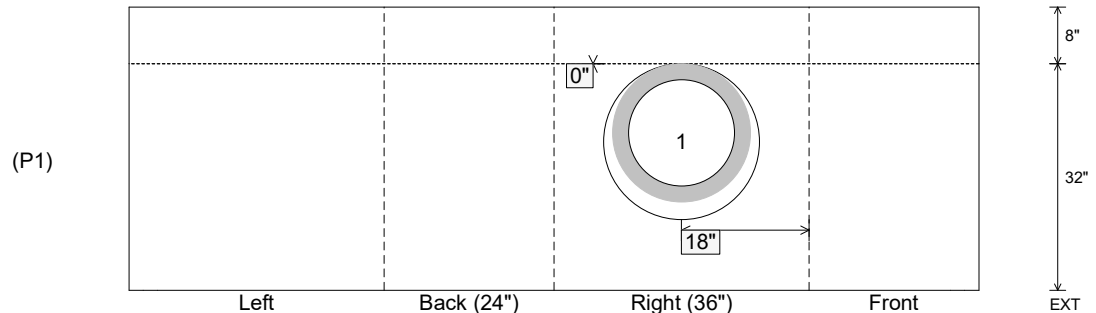
Position	Elev	Angle	Ext. (cw)	Pipe	Pipe OD	Connector	Hole	Horz Size	Up ()	Offset
Invert 1	439.42'	90°	26"	15" RCP B WALL	19.5"	Hole 22	22"	22"	0"	0"
Invert 2										
Invert 3										
Invert 4										
Invert 5										
Invert 6										
Invert 7										
Invert 8										

RIGHT-SIDE UP VIEW (int. dimensions)

UPSIDE-DOWN VIEW (int. dimenions)



INSIDE WALL DIMENSIONS



Coating (Int): Coating (Ext):	Seam Up: Flat Seam Dn: n/a	Wall Thickness: 8" Floor Height: 8"	Height (Int): 32" Height (Ext): 40"	Weight (Net): 4406 lb Volume (Net): 1.12cu.yd
----------------------------------	-------------------------------	----------------------------------------	----------------------------------------	--------------------------------------------------

Job Name: 25-4508 - Georgetown Commons Target
 Job Location: Georgetown, KY
 Contractor: Winwater Hartford KY Co.

Plant: 100
 5/28/2026 11:25:41 AM

Tech: Jared - F
 PC: A. Chambers



Structure ID: 115 (31)

P1 BX24300808VF

BOX BASE 8inW, 8inF, Variable Ht F/n

- P2) 24" x 30" - CASTING HEIGHT - 6"
- P1) 24" x 30" - BOX BASE 8inW, 8inF, Variable Ht F/n - 25"
- 1) CASTING - HOE 360 Set (F/G/H)
- 1) 24" x 30" - Conseal CS-102 1.00"
- 1) Hole - 16

0 lb
 3445 lb
 362 lb
 0 lb
 0 lb

 0 lb
 Structure Total: 3807 lb

- Structure Notes:
1. PER ASTM C913 SPECIFICATIONS.
 2. CONCRETE = 4,000 PSI AT 28 DAYS.
 3. NO STEPS AND NO INVERT CHANNEL.
 4. CASTING BY ICAST (HOE 360 SET (F/G/H)).

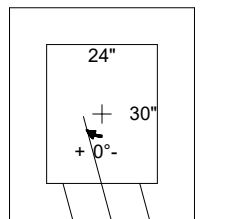
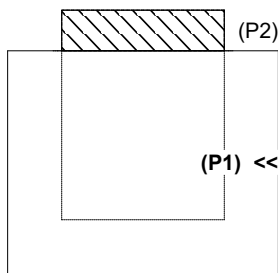
REINFORCING PER ASTM A615 (GRADE 60).
 - WALLS (As .12) #5 BARS AT 12" C.C.E.W.
 - FLOOR (As .12) #5 BARS AT 12" C.C.E.W.

Rim: 872.05' Rim to Invert: 2.55' Slack: 0.85" Sump: 1.25" Step Position:

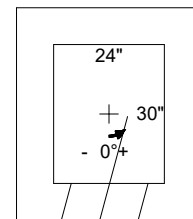
Position	Elev	Angle	Ext. (cw)	Pipe	Pipe OD	Connector	Hole	Horz Size	Up (⌋)	Offset
Invert 1	869.5'	345°	18"	12" HDPE	14.5"	Hole 16	16"	16.564"	0"	4"
Invert 2										
Invert 3										
Invert 4										
Invert 5										
Invert 6										
Invert 7										
Invert 8										

RIGHT-SIDE UP VIEW (int. dimensions)

UPSIDE-DOWN VIEW (int. dimensions)



Invert: 1
 Degree: 345°
 Horz: 12.125"
 Hole: 16"
 Up(⌋): 0"



Invert: 1
 Degree: 345°
 Horz: 12.125"
 Hole: 16"
 Up(⌋): 0"

INSIDE WALL DIMENSIONS



Coating (Int):
 Coating (Ext):

Seam Up: Flat
 Seam Dn: n/a

Wall Thickness: 8"
 Floor Height: 8"

Height (Int): 25"
 Height (Ext): 33"

Weight (Net): 3445 lb
 Volume (Net): 0.88cu.yd

Job Name: 26-1368 Freeman Lake Park Parking Lot Project	Plant: Beaver Dam	Tech: S. Felletter	
Job Location: Elizabethtown, KY Contractor: Kauffeld Brothers Construction	5/29/2026 8:39:17 AM	PC: T. Ryan	

Structure ID: CI #4-5 CBIF

P2 BX2424-08R30

BOX RISER 8inW F/G

P3) 24" x 24" - CASTING HEIGHT - 5"	0 lb
P2) 24" x 24" - BOX RISER 8inW F/G - 30"	2578 lb
P1) 24" x 24" - BOX BASE 8inW, 8inF, Variable Ht T/n - 37"	4029 lb
1) CASTING - HOE KY-465 SET (CBI TY F)	465 lb
2) 24" x 24" - Conseal CS-102 1.00"	0 lb
1) Hole - 20	0 lb
Structure Total:	7072 lb

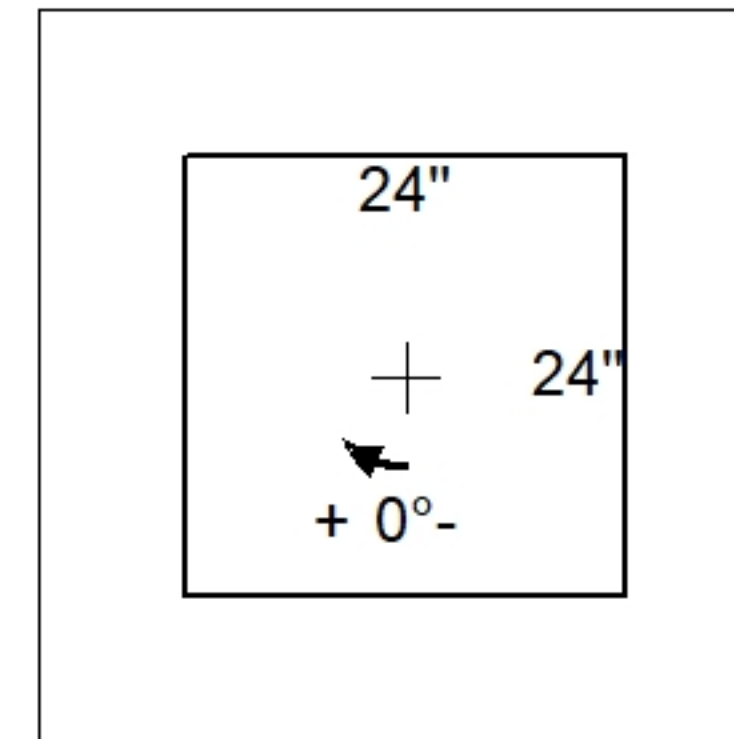
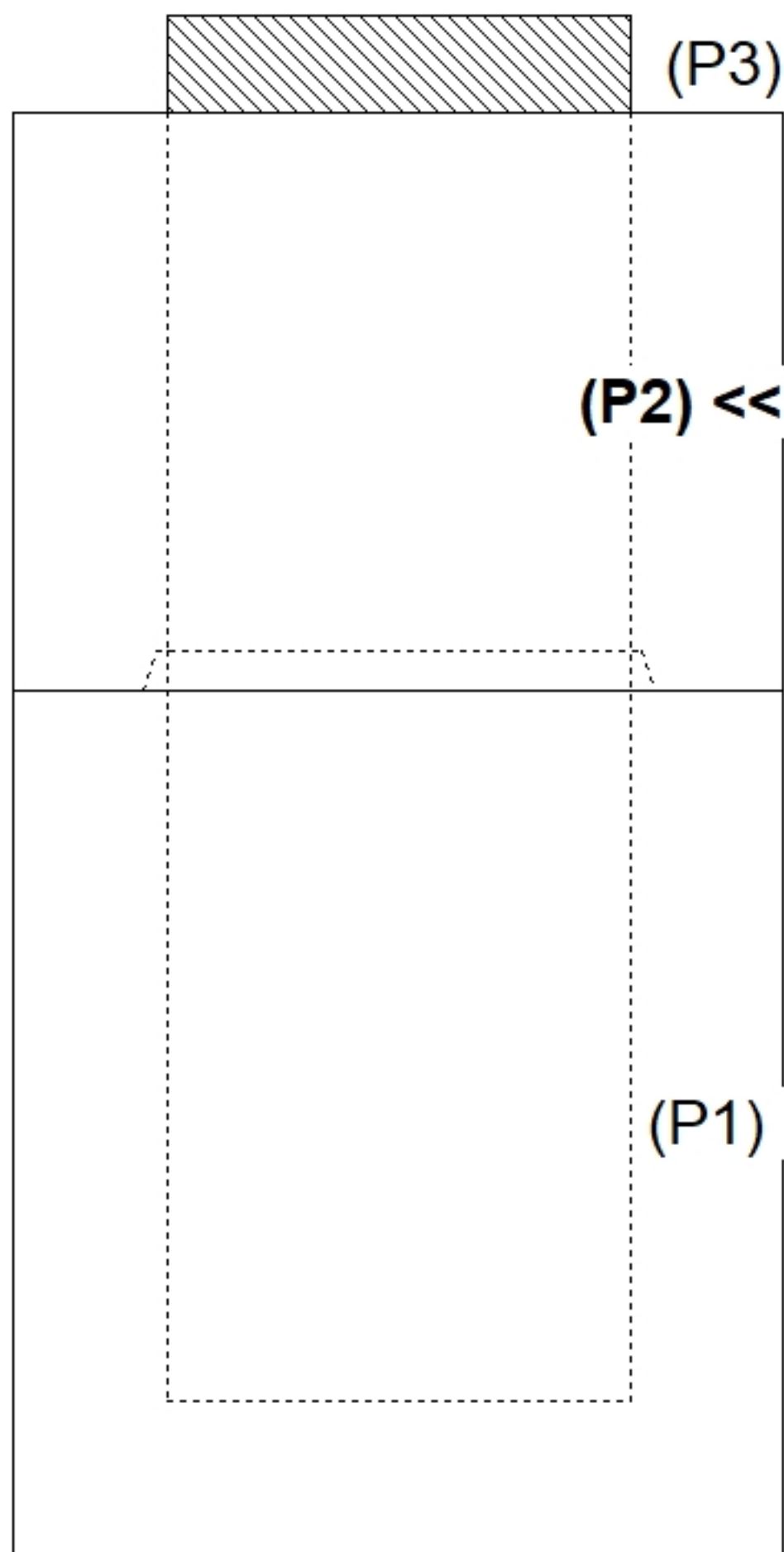
Structure Notes:
 1. KYTC CBI TYPE F / ASTM C913 SPECIFICATIONS.
 2. CONCRETE = 4,000 PSI AT 28 DAYS.
 3. CASTING BY ICAST (HOE KY-465 SET)

REINFORCING PER ASTM A615 (GRADE 60).
 - WALLS (As .31) #5 BARS AT 12" C.C.E.W.
 - FLOOR (As .31) #5 BARS AT 12" C.C.E.W.

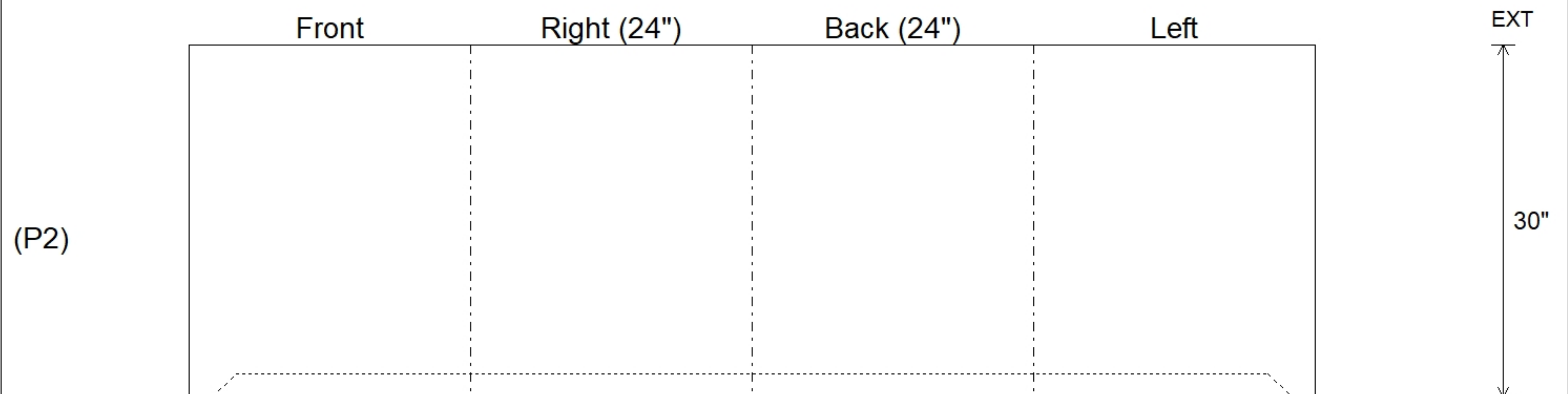
Rim: 772.25' Rim to Invert: 6' Slack: 0" Sump: 0" Step Position:

Position	Elev	Angle	Ext. (cw)	Pipe	Pipe OD	Connector	Hole	Horz Size	Up (L)	Offset
Invert 1										
Invert 2										
Invert 3										
Invert 4										
Invert 5										
Invert 6										
Invert 7										
Invert 8										

RIGHT-SIDE UP VIEW (int. dimensions)



INSIDE WALL DIMENSIONS



Coating (Int):	Seam Up: Flat	Wall Thickness: 8"	Height (Int): 30"	Weight (Net): 2578 lb
Coating (Ext):	Seam Dn: Groove	Floor Height: 0"	Height (Ext): 30"	Volume (Net): 0.66cu.yd

Job Name: 23-2792 - Teal Dr. Development
 Job Location: Gallatin, TN
 Contractor: Stewart Richey

Plant: 100
 3/25/2026 1:41:45 PM

Tech: J. Horsley - F
 PC: C. Goff



Structure ID: STM-G3

P1 BX2828-06BA30

BOX BASE 6inW, 6inF F/n

- P2) 28" x 28" - CASTING HEIGHT - 6"
- P1) 28" x 28" - BOX BASE 6inW, 6inF F/n - 30"
- 1) CASTING - JBS 3101 Single Set (F/G/H)
- 1) 28" x 28" - Conseal CS-102 1.00"
- 2) Hole - 22

0 lb
 2477 lb
 619 lb
 0 lb
 0 lb

 Structure Total: 3096 lb

Structure Notes:
 1. PER ASTM C913 SPECIFICATIONS.
 2. CONCRETE = 4,000 PSI AT 28 DAYS.
 3. NO STEPS AND NO INVERT CHANNEL.
 4. CASTING BY ICAST (JBS 3101 SINGLE SET (F/G/H)).

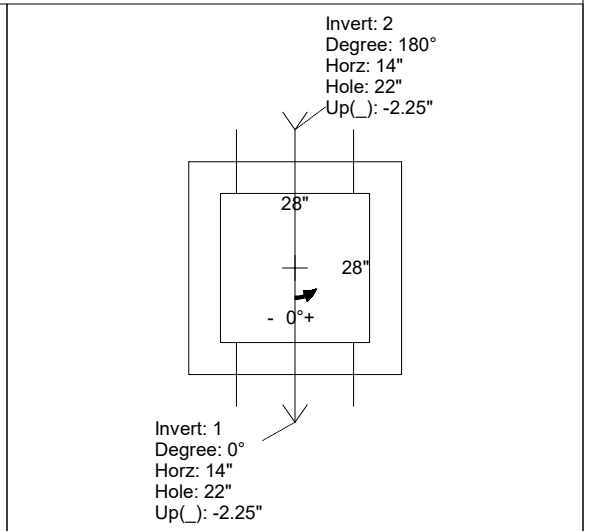
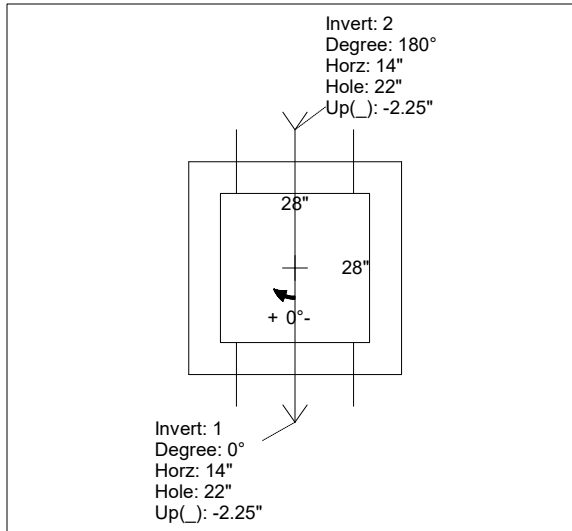
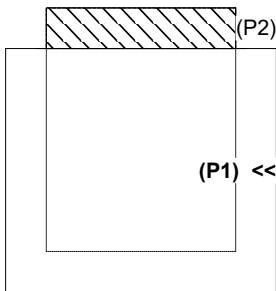
REINFORCING PER ASTM A615 (GRADE 60).
 - WALLS (As .31) #5 BARS AT 12" C.C.E.W.
 - FLOOR (As .31) #5 BARS AT 12" C.C.E.W.

Rim: 469.88' Rim to Invert: 3.01' Slack: 0.12" Sump: 0" Step Position:

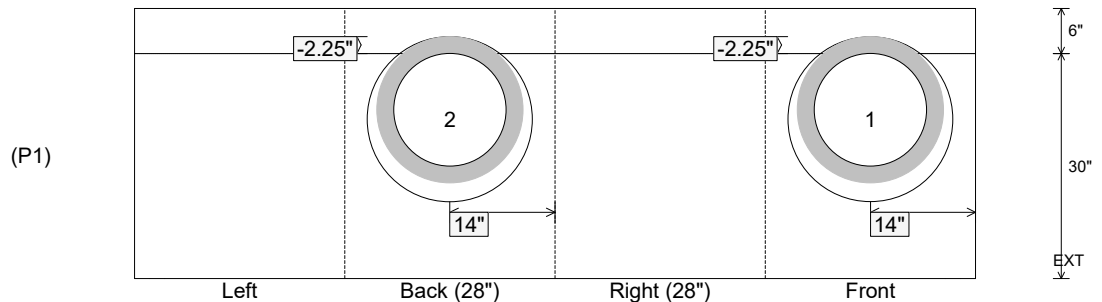
Position	Elev	Angle	Ext. (cw)	Pipe	Pipe OD	Connector	Hole	Horz Size	Up ()	Offset
Invert 1	466.87'	0°	20"	15" RCP B WALL	19.5"	Hole 22	22"	22"	-2.25"	0"
Invert 2	466.87'	180°	20"	15" RCP B WALL	19.5"	Hole 22	22"	22"	-2.25"	0"
Invert 3										
Invert 4										
Invert 5										
Invert 6										
Invert 7										
Invert 8										

RIGHT-SIDE UP VIEW (int. dimensions)

UPSIDE-DOWN VIEW (int. dimensions)



INSIDE WALL DIMENSIONS



Coating (Int):
 Coating (Ext):

Seam Up: Flat
 Seam Dn: n/a

Wall Thickness: 6"
 Floor Height: 6"

Height (Int): 30"
 Height (Ext): 36"

Weight (Net): 2477 lb
 Volume (Net): 0.63cu.yd

Job Name: 23-2792 - Teal Dr. Development
 Job Location: Gallatin, TN
 Contractor: Stewart Richey

Plant: 100
 3/25/2026 1:41:39 PM

Tech: J. Horsley - F
 PC: C. Goff



Structure ID: STM-D4

P1 BX3030-06VH

BOX BASE 6inW, 6inF, Variable Ht F/n

- P2) 30" x 30" - CASTING HEIGHT - 4"
- P1) 30" x 30" - BOX BASE 6inW, 6inF, Variable Ht F/n - 37"
- 1) CASTING - JBS 4315 F/G
- 1) 30" x 30" - Conseal CS-102 1.00"
- 2) Hole - 32"

0 lb
 2963 lb
 500 lb
 0 lb
 0 lb

 3463 lb

Structure Total: 3463 lb

Structure Notes:

1. PER ASTM C913 SPECIFICATIONS.
2. CONCRETE = 4,000 PSI AT 28 DAYS.
3. NO STEPS AND NO INVERT CHANNEL.
4. CASTING BY ICAST (JBS 4315 F/G).

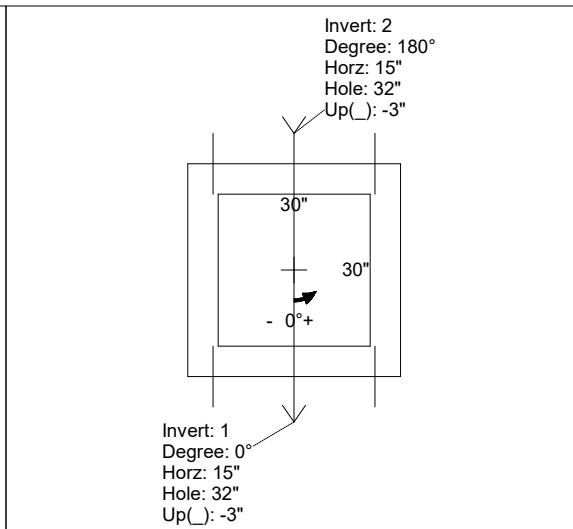
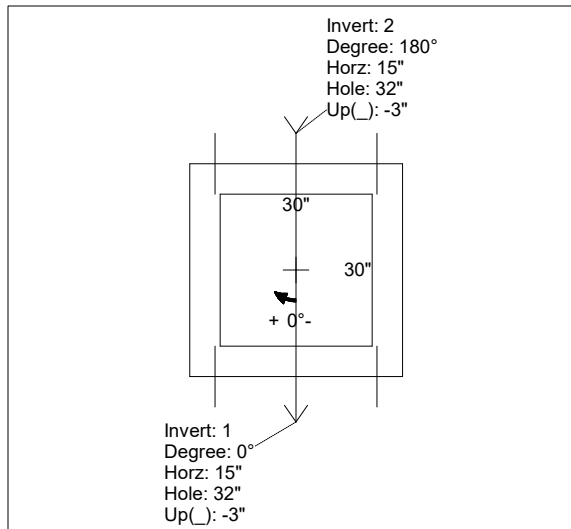
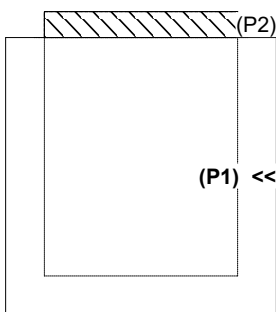
REINFORCING PER ASTM A615 (GRADE 60).
 - WALLS (As .12) #5 BARS AT 12" C.C.E.W.
 - FLOOR (As .12) #5 BARS AT 12" C.C.E.W.

Rim: 470.23' Rim to Invert: 3.46' Slack: 0.52" Sump: 0" Step Position:

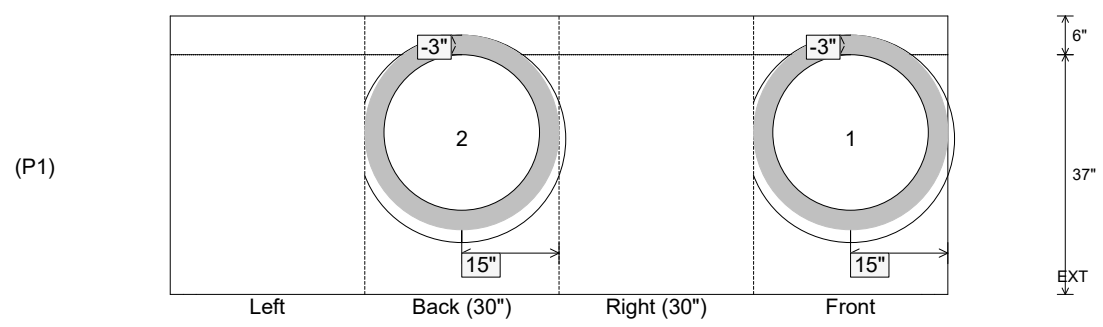
Position	Elev	Angle	Ext. (cw)	Pipe	Pipe OD	Connector	Hole	Horz Size	Up ()	Offset
Invert 1	466.77'	0°	21"	24" RCP B WALL	30"	Hole 32	32"	31"	-3"	0"
Invert 2	466.77'	180°	21"	24" RCP B WALL	30"	Hole 32	32"	31"	-3"	0"
Invert 3										
Invert 4										
Invert 5										
Invert 6										
Invert 7										
Invert 8										

RIGHT-SIDE UP VIEW (int. dimensions)

UPSIDE-DOWN VIEW (int. dimensions)



INSIDE WALL DIMENSIONS



Coating (Int):
 Coating (Ext):

Seam Up: Flat
 Seam Dn: n/a

Wall Thickness: 6"
 Floor Height: 6"

Height (Int): 37"
 Height (Ext): 43"

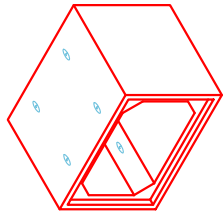
Weight (Net): 2963 lb
 Volume (Net): 0.76cu.yd



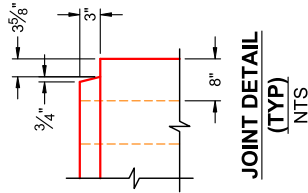
Structure ID: BC 6 x 4 (Sec C)

P1 BC048072-08WLF-9H

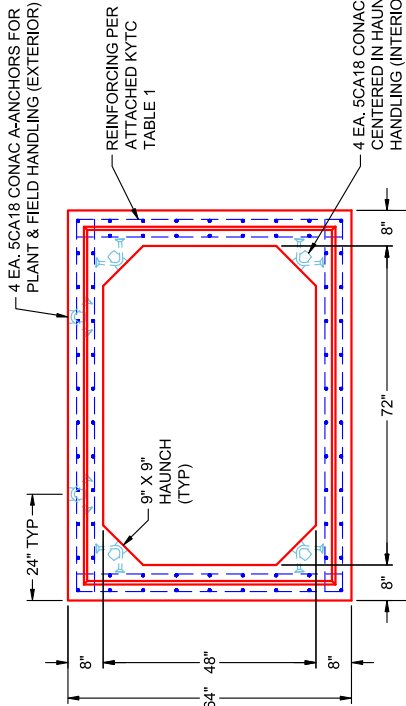
BOX CULVERT (08W/08F/08T) G/T



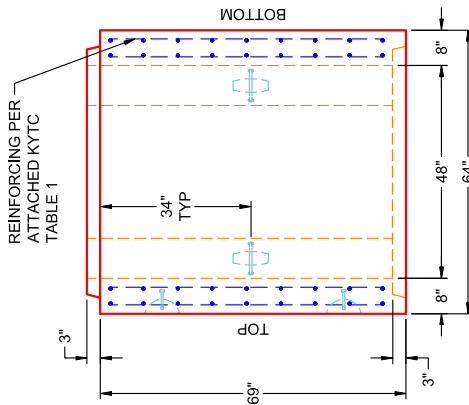
COMPONENT ISOMETRIC VIEW



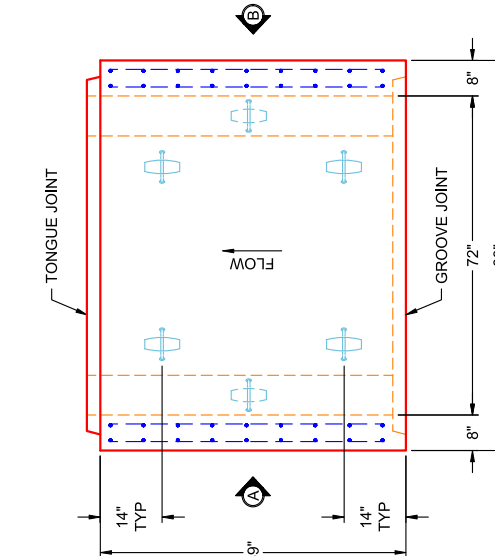
JOINT DETAIL (TYP) NTS



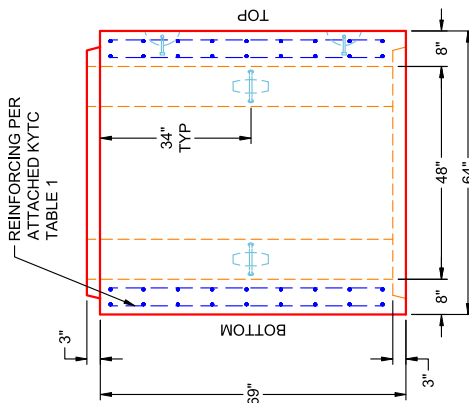
END VIEW TYPICAL



VIEW B SECTION C (UPRIGHT IN MOLD)



PLAN VIEW SECTION C (UPRIGHT IN MOLD)



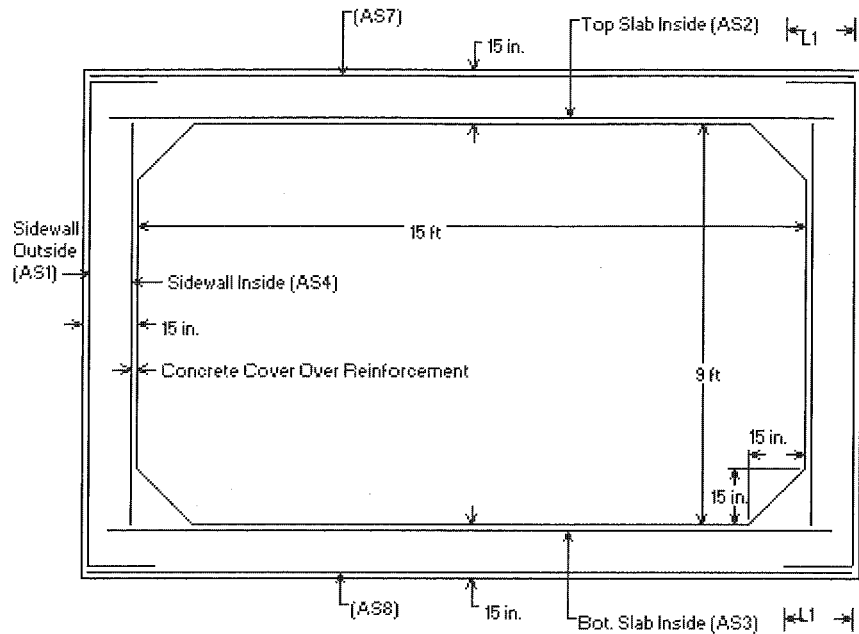
VIEW A SECTION C (UPRIGHT IN MOLD)

- GENERAL NOTES:**
- PER SECTION 605 OF KYTC STANDARD SPECS FOR ROAD & BRIDGE CONSTRUCTION
 - LOAD REQUIREMENTS: KY-HL93 (KY TABLE 1)
 - REINFORCEMENT PER ATTACHED KYTC TABLE 1
 - COVER DEPTH: 0' - 4"
 - CONCRETE: 5,000 PSI AT 28 DAYS
 - JOINT SEALANT: 1" BUTYL MASTIC (CS-102) EXTERIOR JOINT WRAP: 12" WIDE (CS-212)
 - WEIGHT: 6' X 4' RCBC = 2,354 LBS / LF (5'-9" LONG SECTION = 13,537 LBS)

PRODUCTION WORK ORDER	
PRODUCT I.D.: BC048072-08WLF-9H	DESCRIPTION: 72" X 48" X 69" BOX CULVERT (8" WALLS & 9" HAUNCH)
PRODUCT VIEW: RIGHT SIDE UP	CUSTOMER: ERNIE DAVIS & SONS MECHANICAL, INC.
PLANT: BEAVER DAM, KY	PROJECT: HUNTER'S RIDGE PH 1
WEIGHT: 13,537 LBS	STRUCTURE: BC 6 X 4 (SEC C)
TOP SECTION JOINT: TONGUE	ORDER NO: 25-2898
BASE SECTION JOINT: GROOVE	PE: J.H. ROSS
QC CHECK INITIALS:	DRAWING: K. CARDWELL
	DATE: 05/29/26
	SCALE: NTS
	PG. 1 OF 1



THIS DRAWING IS THE PROPERTY OF INFRASTRUCTURE PRECAST, INC. ANY USE OR DUPLICATION OF THIS DRAWING WITHOUT PRIOR AUTHORIZATION IS STRICTLY PROHIBITED.



- * <L1> is Splice Length
- * (AS7) is Top Slab Outside
- * (AS8) is Bottom Slab Outside
- * See Box Culvert Design Summary Sheet for transverse and distribution reinforcement, as required.
- * For sidewall thicknesses of 6 in. and above, extend AS2 and AS3 a min. of 4 in. beyond the inside face of the sidewall. For thicknesses less than 6 in., extend AS2 and AS3 at least to within 1-1/2 in. of the outside face of the sidewall.

Notes:

- 1) Other reinforcement schemes that provide the required reinforcement areas at all locations identified in the program output are acceptable.
- 2) Longitudinal reinforcement is not shown for clarity, see AASHTO M259 for longitudinal reinforcement and for additional requirements.

KY Table 1

Precast Culvert KYHL-93 Design Table

Design Earth Cover, ft		As1	As2	As3	As4	As7	As8	As5	As6
6x4x7	0<2*	0.202	0.421	0.266	0.168	0.192	0.168	0.192	0.192
	2<3	0.251	0.368	0.288	0.168	0.168	0.168		
	3-5	0.19	0.271	0.24	0.168	0.168	0.168		
	10	0.168	0.228	0.234	0.168	0.168	0.168		
	15	0.216	0.306	0.313	0.168	0.168	0.168		
	20	0.275	0.391	0.398	0.168	0.168	0.168		
	25	0.338	0.479	0.487	0.168	0.168	0.168		
	30	0.404	0.571	0.579	0.168	0.168	0.168		
	35	0.473	0.667	0.675	0.168	0.168	0.168		

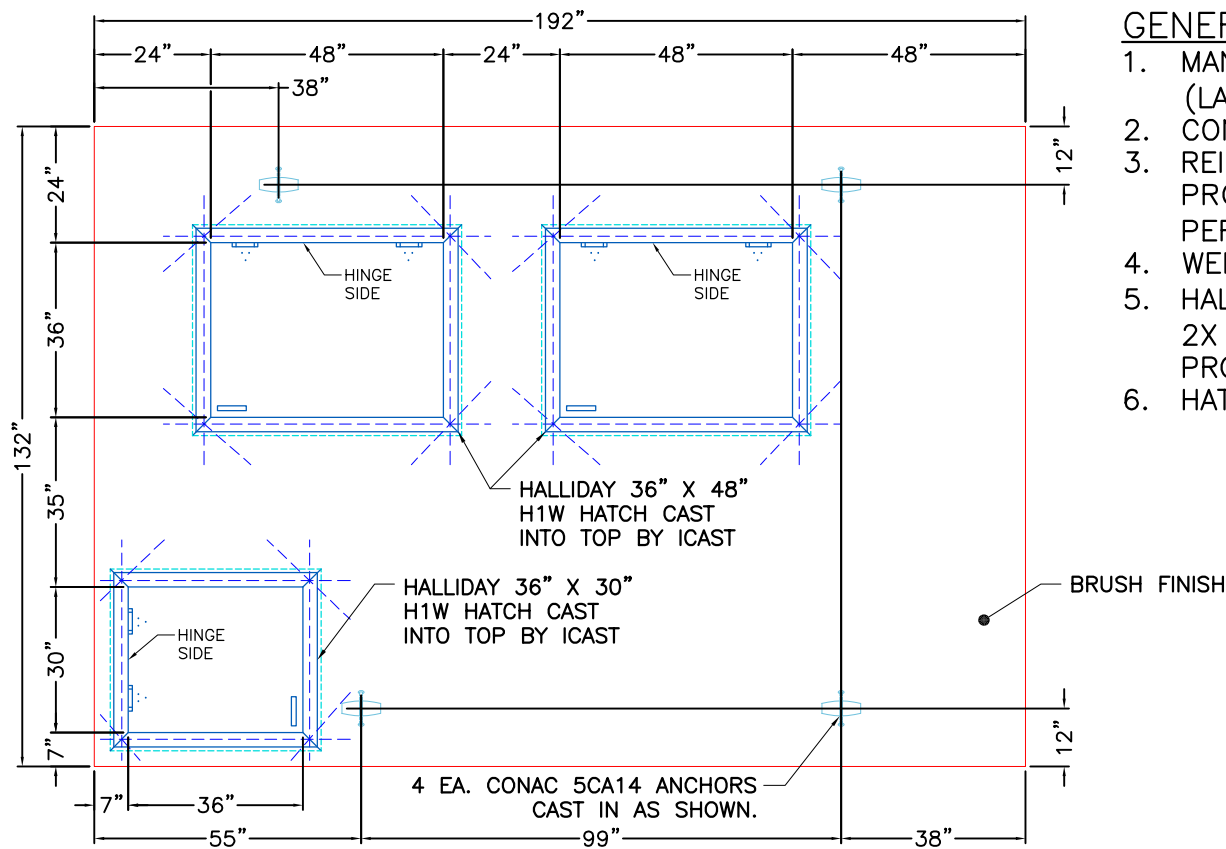
*top slab 8"

Design Earth Cover, ft		As1	As2	As3	As4	As7	As8	As5	As6
6x5x7	0<2*	0.192	0.449	0.291	0.168	0.192	0.168	0.192	0.192
	2<3	0.22	0.398	0.316	0.168	0.168	0.168		
	3-5	0.168	0.294	0.262	0.168	0.168	0.168		
	10	0.168	0.243	0.252	0.168	0.168	0.168		
	15	0.188	0.326	0.336	0.168	0.168	0.168		
	20	0.238	0.417	0.427	0.168	0.168	0.168		
	25	0.291	0.512	0.522	0.168	0.168	0.168		
	30	0.347	0.611	0.622	0.168	0.168	0.168		
	35	0.406	0.714	0.725	0.168	0.168	0.168		

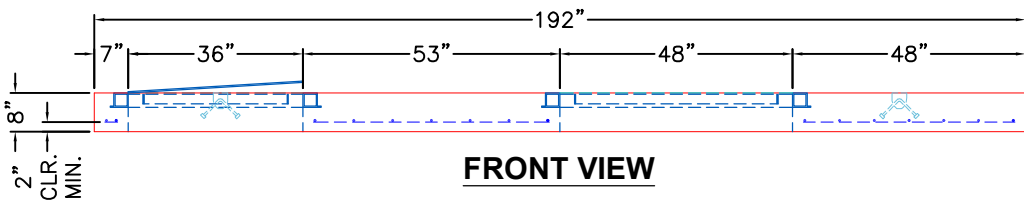
*top slab 8"

Design Earth Cover, ft		As1	As2	As3	As4	As7	As8	As5	As6
6x6x7	0<2*	0.192	0.47	0.311	0.168	0.192	0.168	0.192	0.192
	2<3	0.195	0.421	0.337	0.168	0.168	0.168		
	3-5	0.168	0.311	0.277	0.168	0.168	0.168		
	10	0.168	0.252	0.263	0.168	0.168	0.168		
	15	0.168	0.338	0.349	0.168	0.168	0.168		
	20	0.212	0.432	0.444	0.168	0.168	0.168		
	25	0.259	0.531	0.543	0.168	0.168	0.168		
	30	0.308	0.634	0.647	0.168	0.168	0.168		
	35	0.359	0.741	0.755	0.168	0.168	0.168		

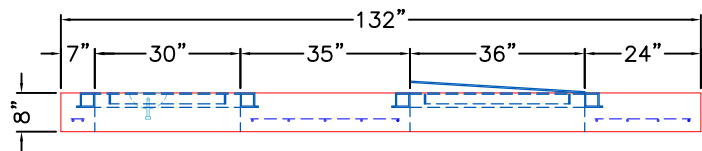
*top slab 8"



PLAN VIEW




FRONT VIEW



RIGHT VIEW

GENERAL NOTES:

1. MANUFACTURED TO ASTM C-913 (LATEST REVISION).
2. CONCRETE: 5,000 PSI AT 28 DAYS.
3. REINFORCING: SEE REINFORCEMENT DESIGN PROVIDED BY MATT CHILDS ENGINEERING PER ASTM A615 (GRADE 60).
4. WEIGHT: 13,968 LBS
5. HALLIDAY 36" X 30" H1W HATCH AND 2X HALLIDAY 36" X 48" H1W HATCHES PROVIDED BY ICAST.
6. HATCHES TO BE CAST IN TOP SLAB.

		PRODUCTION WORK ORDER QUALITY CONTROL CHECKLIST <input type="checkbox"/> ALL DIMENSIONS CORRECT. <input type="checkbox"/> LIFTERS INSTALLED. <input type="checkbox"/> HATCHES CORRECT LOCATION. <input type="checkbox"/> REINFORCING CORRECT. <input type="checkbox"/> SURFACE QUALITY ACCEPTABLE. <input type="checkbox"/> EDGES CHAMFERED. <input type="checkbox"/> ALL PATCHWORK ACCEPTABLE.	PRODUCT I.D.: CTS PRODUCT VIEW: RIGHT SIDE UP PLANT: BEAVER DAM, KY. WEIGHT: 13,968 LBS. TOP SECTION JOINT: N/A BASE SECTION JOINT: N/A QC CHECK INITIALS:	DESCRIPTION: 132" X 192" TOP SLAB FOR 120" X 180" VAULT CUSTOMER: CLEARLY CONSTRUCTION PROJECT: WCWD FLOW FOR OUR FUTURE METER VAULTS STRUCTURE: WATER MAIN MASTER METER VAULT ORDER NO: 25-1706 PE: C. GOFF DATE: 10/2/25	DRAWING: J. COPPAGE SCALE: NTS PG. 1 of 1
-------------------------------------------------------------------------------------	--	--------------------------------------------------------------------------------------------------------------------------------------------------------------------------------------------------------------------------------------------------------------------------------------------------------------------------------------------------------------------------------------------------------------------------------	------------------------------------------------------------------------------------------------------------------------------------------------------------------------------	----------------------------------------------------------------------------------------------------------------------------------------------------------------------------------------------------------------------------------------------	-------------------------------------------------

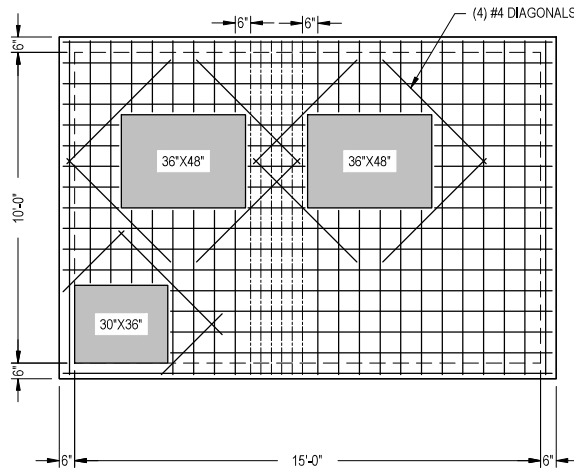
DESIGN NOTE:

HS20 LOADING (OFF-STREET) - ASTM C857
 CONCRETE 28 DAY COMPRESSIVE STRENGTH - 5000 PSI
 REINFORCEMENT STEEL - 60,000 PSI
 REBAR MIN SPLICE LENGTHS: #4-22" #5-28" #6-33"
 PLACE 4-#4 BAR DIAGONAL AROUND OPENING(S)

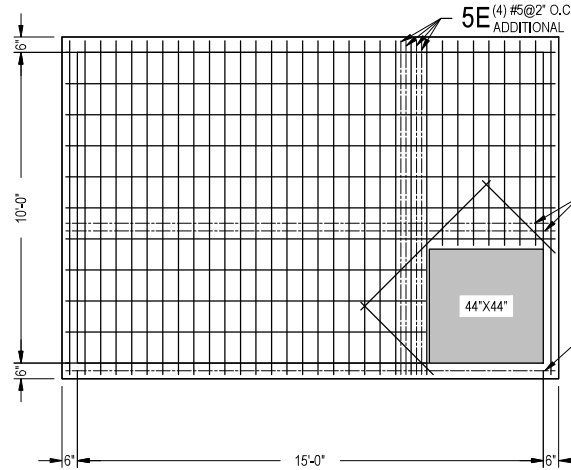
25-1706 WATER MAIN MASTER METER VAULT

REINFORCING STEEL SCHEDULE

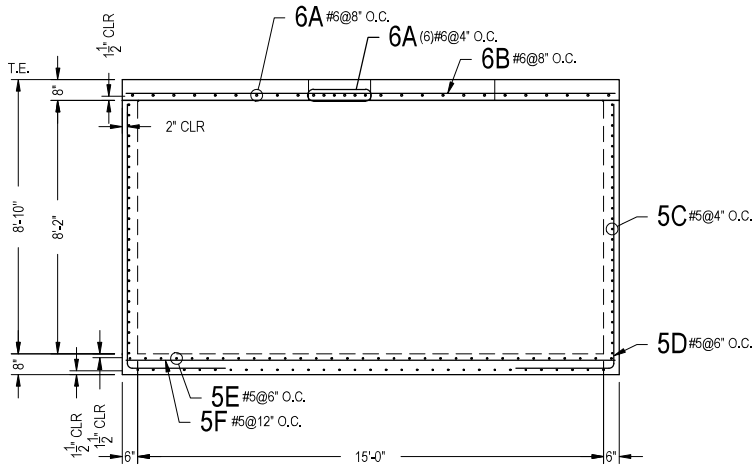
MARK	NO.	LENGTH	TYPE	lb/EA.	TOTAL LB	BENDING DIAGRAM
6A	27	10'-9"	STR.	16,1465	435,9555	
6B	17	15'-9"	STR.	23,6565	402,1605	
5C	25	28'-7" (2)	BENT	29,8124	1490,6200	
5D	104	11'-7"	BENT	12,0814	1258,4656	
5E	36	10'-10"	STR.	11,2992	406,7712	
5F	14	15'-10"	STR.	16,5142	231,1988	



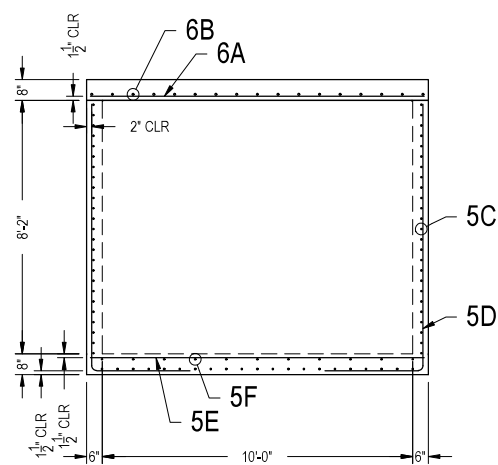
PLAN VIEW
(TOP SLAB)



PLAN VIEW
(BASE SECTION - TOP MAT)



FRONT VIEW



RIGHT VIEW

**WATER MAIN MASTER
METER VAULT**



MATT CHILDS ENGINEERING P.L.L.C.
 519 E. INTERSTATE 30, #1017
 ROCKWALL, TX 75087

METER VAULTS 10'-0" x 15'-0"		REVISIONS	DRAWN BY: MBJ	DATE: 6/20/2025
CLEARLY CONSTRUCTION WCWD FLOW FOR OUR FUTURE		A	SCALE: 1/4" = 1'	PAGE: 1 OF 1
B		C		
D				