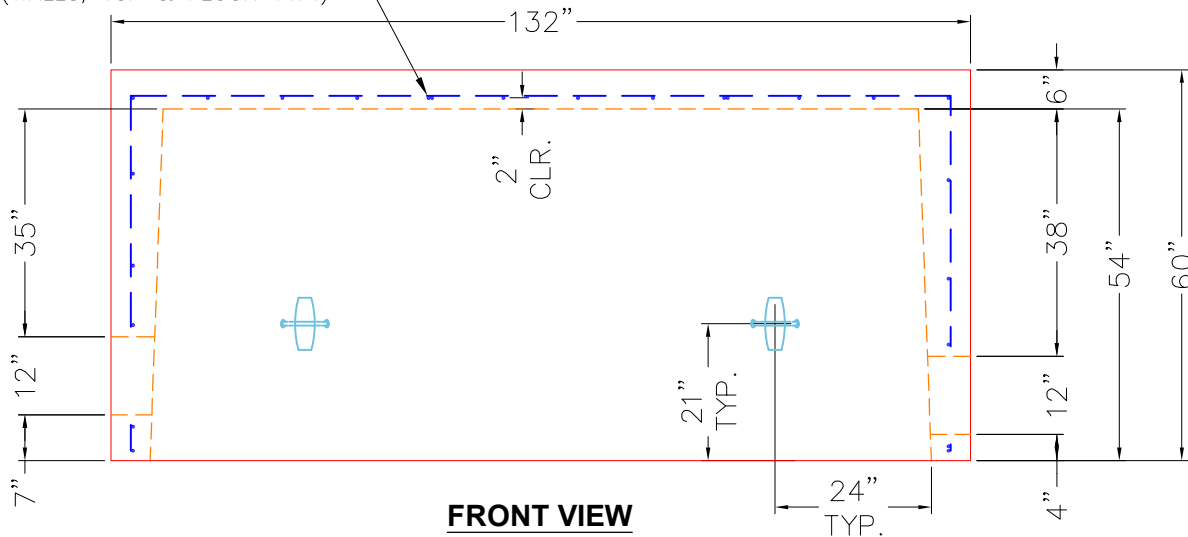


**TOP VIEW**  
(UPSIDE-DOWN)

FIRST POUR (MONO BASE) = 16,602 LBS


#5 BAR @ 8" C/C E.W.  
1 1/2" CONCRETE COVER MIN.  
(WALLS, TOP & FLOOR TYP.)

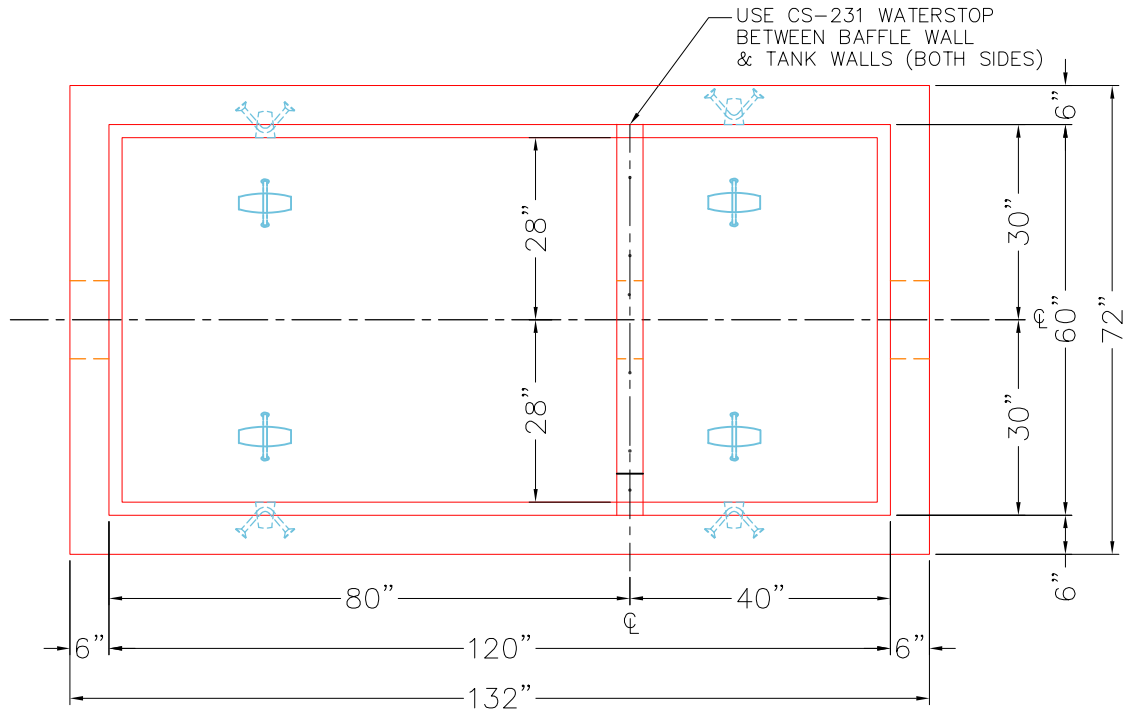


**FRONT VIEW**  
(UPSIDE-DOWN)

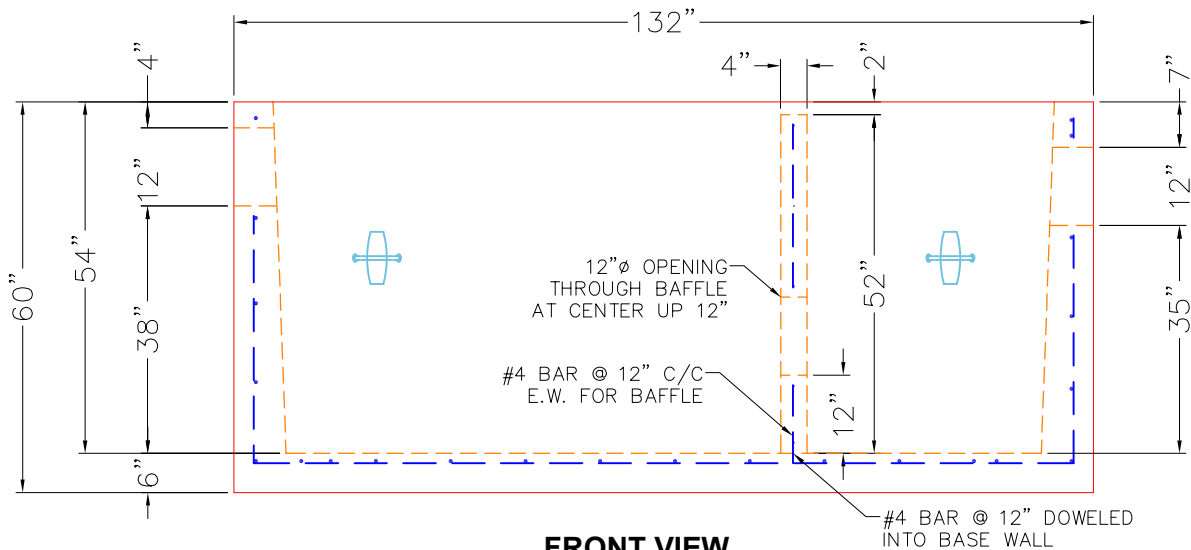
**NOTES:**

1. PER ASTM C-890-13 LATEST REVISION.  
(H-20 TRAFFIC RATED DESIGN)
2. CONCRETE = 4,500 PSI AT 28 DAYS.
3. REINFORCING PER ASTM A615 (GRADE 60).
5. POUR BASE, THEN POUR INTERIOR BAFFLE--SEE PAGE 2 OF 2.
6. WEIGHT WITHOUT WEIR WALL 16,602 LBS  
WEIGHT WITH WEIR WALL 17,675 LBS

PRODUCTION WORK ORDER		PRODUCT I.D.: BX060120-06W06F-BA54	DESCRIPTION: 60" X 120" X 54" TALL 1,000 GAL GREASE TRAP BASE		
	QUALITY CONTROL CHECKLIST	PRODUCT VIEW: UPSIDE-DOWN	CUSTOMER: INFINITY PIPELINE INC		
	<input type="checkbox"/> ALL DIMENSIONS CORRECT.	PLANT: BEAVER DAM, KY.	PROJECT: 1,000 GAL GREASE TRAP		
	<input type="checkbox"/> LIFTERS INSTALLED.	WEIGHT: 16,602 LBS	STRUCTURE: QL1 OW1000		
	<input type="checkbox"/> HOLE LOCATION(S) CORRECT.	TOP SECTION JOINT: N/A	ORDER NO: 26-1790		
	<input type="checkbox"/> REINFORCING CORRECT.	BASE SECTION JOINT: N/A	PE: E. BRADLEY	DRAWING: S. FELLETTER	
	<input type="checkbox"/> BAFFLE POURED CORRECTLY. <input type="checkbox"/> BOOTS & BANDS INSTALLED. <input type="checkbox"/> SURFACE QUALITY ACCEPTABLE.	QC CHECK INITIALS:	DATE: 05/12/26	SCALE: NTS	PG. 1 of 2



**TOP VIEW**  
(RIGHT-SIDE UP)




**FRONT VIEW**  
(RIGHT-SIDE UP)

**SECOND POUR (BAFFLE WALL) = 1,073 LBS**

**NOTES:**

1. PER ASTM C-890-13 LATEST REVISION. (H-20 TRAFFIC RATED DESIGN)
2. CONCRETE = 5,000 PSI AT 28 DAYS.
3. REINFORCING PER ASTM A615 (GRADE 60).
5. THIS DRAWING USED FOR POURING BAFFLE WALL.
6. WEIGHT WITHOUT WEIR WALL 16,602 LBS  
WEIGHT WITH WEIR WALL 17,675 LBS

PRODUCTION WORK ORDER		PRODUCT I.D.: BW	DESCRIPTION: 60" X 120" X 54" TALL 1,000 GAL GT ADD BAFFLE		
	QUALITY CONTROL CHECKLIST	PRODUCT VIEW: RIGHT SIDE UP	CUSTOMER: INFINITY PIPELINE INC		
	<input type="checkbox"/> ALL DIMENSIONS CORRECT.	PLANT: BEAVER DAM, KY.	PROJECT: 1,000 GAL GREASE TRAP		
	<input type="checkbox"/> LIFTERS INSTALLED.	WEIGHT: 1,073 LBS.	STRUCTURE: QL1 OW1000		
	<input type="checkbox"/> HOLE LOCATION(S) CORRECT.	TOP SECTION JOINT: N/A	ORDER NO: 26-1790		
	<input type="checkbox"/> REINFORCING CORRECT.	BASE SECTION JOINT: N/A	PC: E. BRADLEY	DRAWING: S. FELLETTER	
	<input type="checkbox"/> BAFFLE POURED CORRECTLY.	QC CHECK INITIALS:	DATE: 05/12/26	SCALE: NTS	PG. 2 of 2