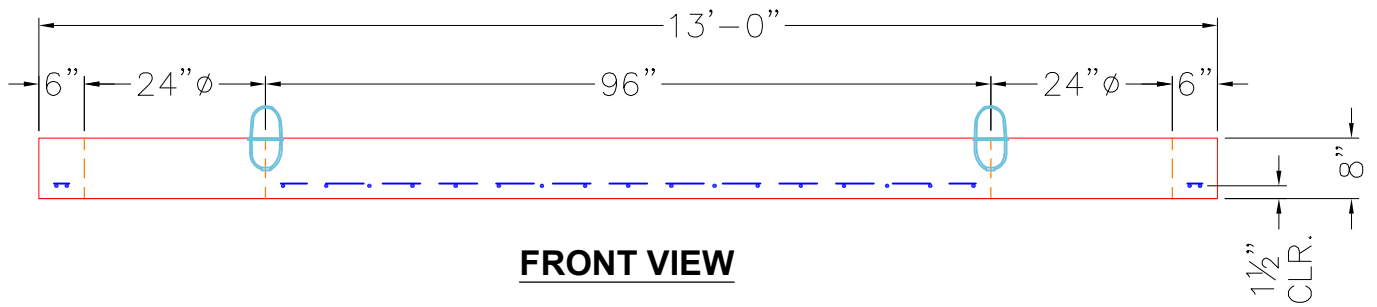



TOP VIEW



FRONT VIEW

NOTES:

1. PER ASTM C-890-13 LATEST REVISION.
(H-20 TRAFFIC RATED DESIGN)
2. CONCRETE = 5,000 PSI AT 28 DAYS.
3. REINFORCING: #5 BAR @ 8" C/C E.W. (GRADE 60).
PER ASTM A615

PRODUCTION WORK ORDER		PRODUCT I.D.: BX072177-08LD06S	DESCRIPTION: 84" X 156" X 8" GREASE TRAP TOP SLAB	
	QUALITY CONTROL CHECKLIST	PRODUCT VIEW: RIGHT SIDE UP	CUSTOMER: CORE & MAIN LP	
	<input type="checkbox"/> ALL DIMENSIONS CORRECT.	PLANT: BEAVER DAM, KY.	PROJECT: GUTHRIE KY. CONVENIENCE STORE	
	<input type="checkbox"/> LIFTERS INSTALLED.	WEIGHT: 8,475 LBS.	STRUCTURE: 1,500 GAL GREASE TRAP	
	<input type="checkbox"/> HOLE LOCATION(S) CORRECT.	TOP SECTION JOINT: N/A	ORDER NO: 25-2023	
	<input type="checkbox"/> REINFORCING CORRECT.	BASE SECTION JOINT: N/A	PC: T. LEWIS	DRAWING: S. FELLETTTER
	<input type="checkbox"/> FLAT ON BOTTOM OF SLAB. <input type="checkbox"/> LIGHT BRUSHED FINISH. <input type="checkbox"/> SURFACE QUALITY ACCEPTABLE.	QC CHECK INITIALS:	DATE: 05/05/26	SCALE: NTS
			PG. 1 of 1	