

Job Name: 25-3310 - Mammoth Cave NP-MACA 12  
 Job Location: Mammoth Cave, KY  
 Contractor: Phillips Brothers

Plant: 100

5/5/2026 5:09:25 PM

Tech: J. Horsley - F

PC: C. Goff



**Structure ID: ICAST LI40**

**P2 BX60120-06LD08**

**CB FLAT TOP 6"W w/(2) 24" HOLES (Grease Trap) Fit**

- P3) 24" - CASTING HEIGHT - 7"
- P2) 60" x 120" - CB FLAT TOP 6"W w/(2) 24" HOLES (Grease Trap) - 8"
- P1) 60" x 120" - BOX BASE 6inW, 6inF, Variable Ht - 72"
- 2) CASTING - HOE MC-315 F/C Grease
- 1) 60" x 70" - BAFFLE WALL (GT-1000 GAL.) - 4"
- 1) SECONDARY POUR - WALLS
- 1) 60" x 120" - Conseal CS-102 1.00"
- 3) Hole - 8

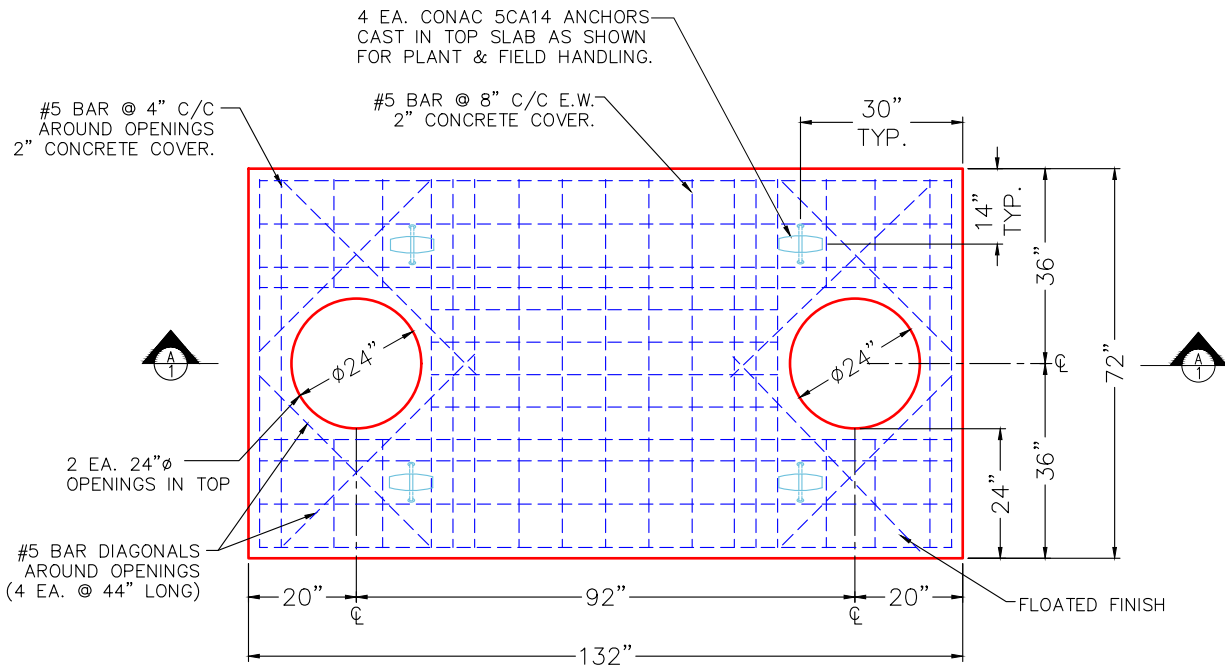
0 lb  
 6076 lb  
 18629 lb  
 516 lb  
 1372 lb  
 0 lb  
 0 lb  
 0 lb

Structure Total: 26593 lb

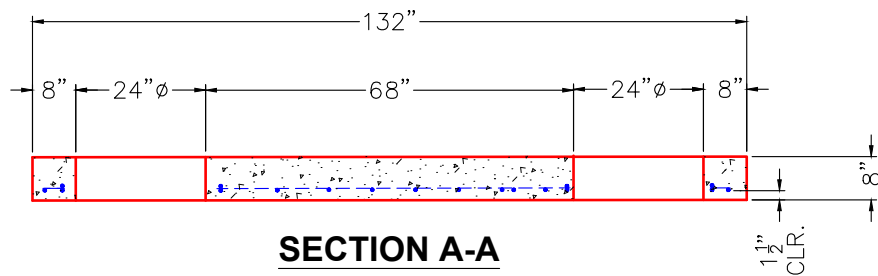
**Structure Notes:**

1. PER ASTM C-890-13 SPECIFICATIONS.
2. CONCRETE = 5,000 PSI AT 28 DAYS.
3. NO STEPS AND NO FLOW CHANNEL.
4. HOE MC-315 F/C GREASE - SHIPPED LOOSE.
5. THIRD POUR REQ'D - BAFFLE WALL.

REINFORCING PER ASTM A615 (GRADE 60).  
 - TOP SLAB (As .47) #5 BARS AT 8" C.C.E.W.  
 - WALLS (As .47) #5 BARS AT 8" C.C.E.W.  
 - FLOOR (As .47) #5 BARS AT 8" C.C.E.W.



**PLAN VIEW**



**SECTION A-A**

**NOTES:**

1. PER ASTM C-890-13 LATEST REVISION.
2. CONCRETE = 5,000 PSI AT 28 DAYS.
3. REINFORCING: #5 BAR @ 8" C/C E.W. (GRADE 60). (H-20 TRAFFIC RATED DESIGN)
4. SEALED WITH 1" CS-102 (DOUBLE). (6 EA. 14.5' ROLLS REQ'D.)
5. TOP SLAB WEIGHT = 5,775 LBS.

Coating (Int):  
 Coating (Ext):

Seam Up: Flat  
 Seam Dn: Flat

Wall Thickness: 6"

Height (Ext): 8"

Weight (Net): 6076 lb  
 Volume (Net): 1.55cu.yd