

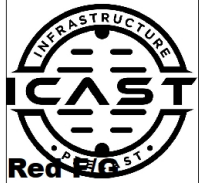
Job Name: 26-1952 - HCWD 2 Fire Station Sanitary Sewer Extension
 Job Location: Glendale, KY
 Contractor: Phillips Bros. Construction, LLC

Plant: 100

5/27/2026 10:50:12 AM

Tech: J. Horsley

PC: T. Ryan



Structure ID: A SS-MHD

P4 MH048LD12CDARED

MH FLAT TOP w/24" Hole ECC w/ConBlock-CDA Red F/G

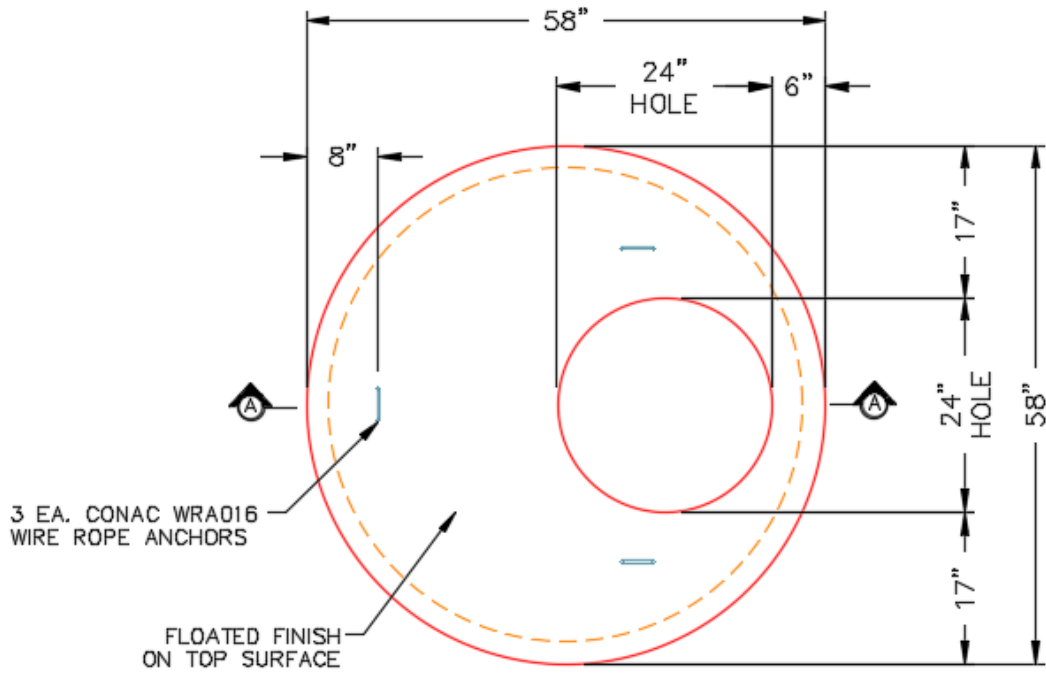
- P6) 24" - CASTING HEIGHT - 7"
- P5) 24" - GRADE RING w/ConBlock-CDA Red F/F - 4"
- P4) 48" - MH FLAT TOP w/24" Hole ECC w/ConBlock-CDA Red F/G - 12"
- P3) 48" - MH RISER w/DROP/ConBlock-CDA Red T/G - 36"
- P2) 48" - MH RISER w/DROP/ConBlock-CDA Red T/G - 48"
- P1) 48" - MH BASE w/DROP/ConBlock-CDA Red T/n - 30"
- 1) JOINT WRAP - 0.065"x12"x50' CONSEAL CS212
- 1) JOINT WRAP PRIMER - CONSEAL CS-75 (1 gal.)
- 1) 48" - MH INVERT CHANNEL w/ConBlock-CDA Red - FULL HEIGHT
- 1) CASTING - HOE MC-315 F/C Sanitary
- 3) 48" - Conseal CS-102 1.00" (Double)
- 1) PSX - 12-08 NYLO
- 1) Drop Elbow - 8" PVC
- 1) Drop Tee - 8" PVC
- 9) MH Step ML-10-TDS-NCR - 10"

0 lb
 270 lb
 1580 lb
 2491 lb
 3353 lb
 3354 lb
 0 lb
 0 lb
 1440 lb
 258 lb
 0 lb
 8 lb
 0 lb
 0 lb
 0 lb

Structure Notes:
 1. PER ASTM C478 SPECIFICATIONS.
 2. CONCRETE = 4,000 PSI AT 28 DAYS.
 3. CASTING BY OTHERS (HOE MC-315 F/C SANITARY).
 4. EXTERERIOR DROPE ASSEMBLY AT 190°

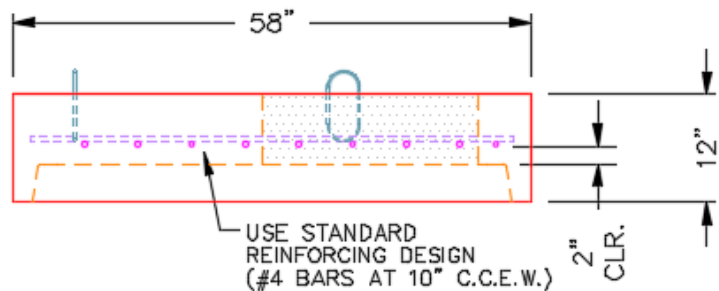
REINFORCING PER ASTM A615 (GRADE 60).
 - TOP SLAB = H20 LOADING.
 - RISER/WALLS (As .12)
 - FLOOR (As .31) #5 BARS AT 12" C.C.E.W.

Structure Total: 12754 lb



PLAN VIEW

CONBLOCK-CDA RED ADMIXTURE REQUIRED



SECTION A-A

Coating (Int): Coating (Ext):	Seam Up: Flat Seam Dn: Groove	Wall Thickness: 5"	Height (Ext): 12"	Weight (Net): 1580 lb Volume (Net): 0.39cu.yd
----------------------------------	----------------------------------	--------------------	-------------------	--------------------------------------------------