

Job Name: 26-1227 - Project Colt
 Job Location: Evansville, IN
 Contractor: Russell's Excavating

Plant: 100
 5/12/2026 11:30:52 AM

Tech: Jared - F
 PC: A. Chambers



Structure ID: 301-8 MHC

P2 MH048LD12ECC

MH FLAT LID w/24in ECC Hole F/G

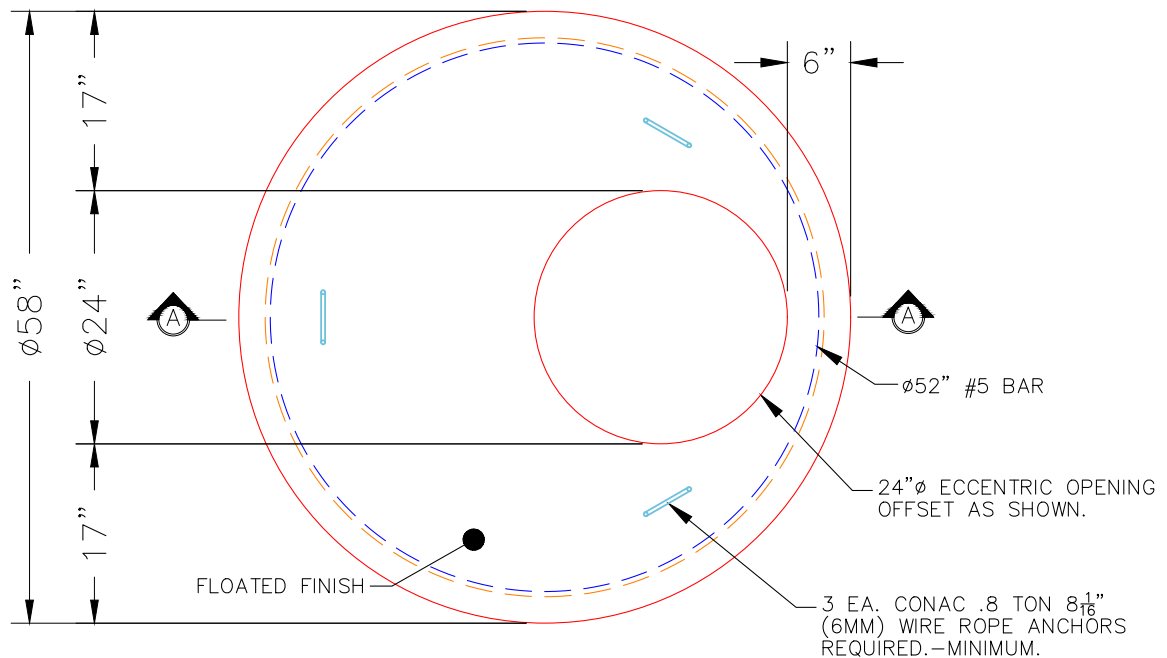
- P3) 24" - CASTING HEIGHT - 7"
- P2) 48" - MH FLAT LID w/24in ECC Hole F/G - 12"
- P1) 48" - MH BASE T/n - 36"
- 1) CASTING - HOE MC-315 F/C Storm
- 1) 48" - Conseal CS-102 1.00"
- 2) Hole - 24"
- 3) MH Step ML-10-TDS-NCR - 10"

0 lb
 1561 lb
 3451 lb
 258 lb
 0 lb
 0 lb
 0 lb

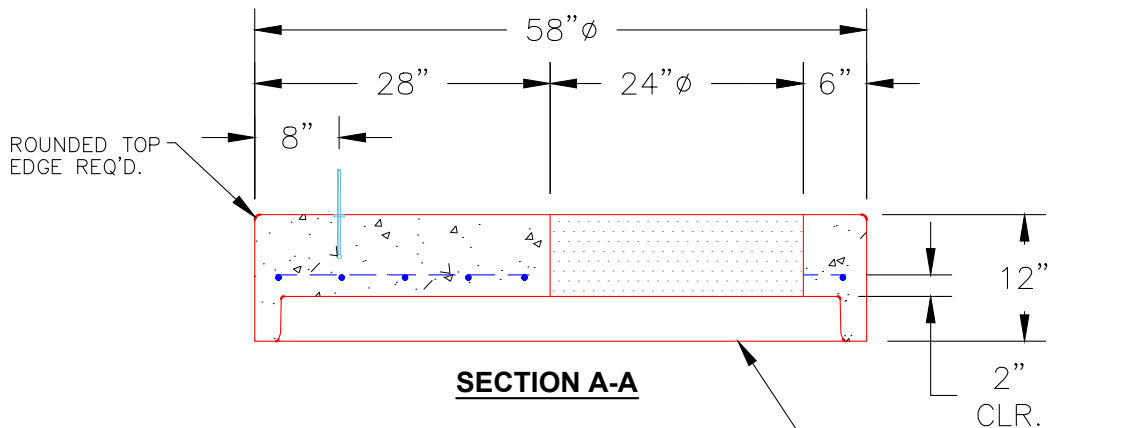
 Structure Total: 5270 lb

- Structure Notes:**
1. INDOT MH TYPE C / ASTM C478 SPEC'S.
 2. CONCRETE = 4,000 PSI AT 28 DAYS.
 3. NO INVERT CHANNEL.
 4. CASTING BY ICAST (HOE MC-315 F/C STORM).

REINFORCING PER ASTM A615 (GRADE 60).
 - TOP SLAB (As .62) #5 BARS AT 6" C.C.E.W..
 - RISER/WALLS (As .12)
 - FLOOR (As .62) #5 BARS AT 6" C.C.E.W.



PLAN VIEW



SECTION A-A

NOTES:

1. MANUFACTURED TO ASTM C-478 (LATEST REVISION).
2. CONCRETE: 4,000 PSI AT 28 DAYS.
3. REINFORCING: #5 BAR @ 6" O.C. E.W. (GRADE 60).

Coating (Int): Coating (Ext):	Seam Up: Flat Seam Dn: Groove	Wall Thickness: 5"	Height (Ext): 12"	Weight (Net): 1561 lb Volume (Net): 0.4cu.yd
----------------------------------	----------------------------------	--------------------	-------------------	---