

Job Name: 25-4508 - Georgetown Commons Target  
 Job Location: Georgetown, KY  
 Contractor: Winwater Hartford KY Co.

Plant: 100  
 5/28/2026 11:25:42 AM

Tech: Jared - F  
 PC: A. Chambers



**Structure ID: 116 (32)**

**P1 BX2436-08BVF**

**BOX BASE 8inW, 8inF, Variable Ht F/n**

- P2) 24" x 36" - CASTING HEIGHT - 6"
- P1) 24" x 36" - BOX BASE 8inW, 8inF, Variable Ht F/n - 44"
- 1) CASTING - HOE 470 SET LV (F/G/H)
- 1) 24" x 36" - Conseal CS-102 1.00"
- 1) Hole - 20
- 1) Hole - 16

0 lb  
 5535 lb  
 394 lb  
 0 lb  
 0 lb  
 0 lb  
 -----  
 Structure Total: 5929 lb

- Structure Notes:**
1. PER ASTM C913 SPECIFICATIONS.
  2. CONCRETE = 4,000 PSI AT 28 DAYS.
  3. NO STEPS AND NO INVERT CHANNEL.
  4. CASTING BY ICAST (HOE 470 SET LV (F/G/H)).

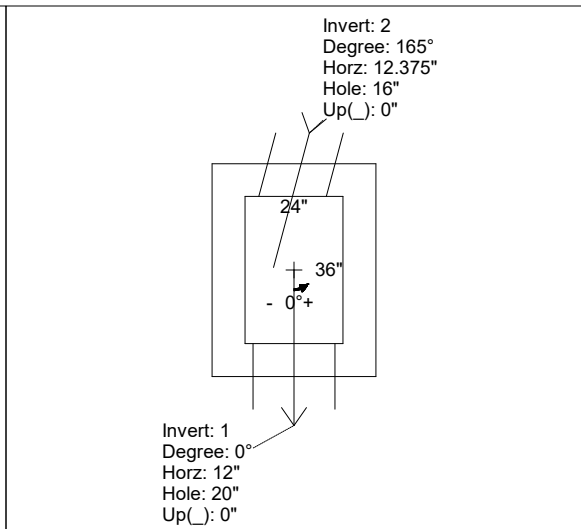
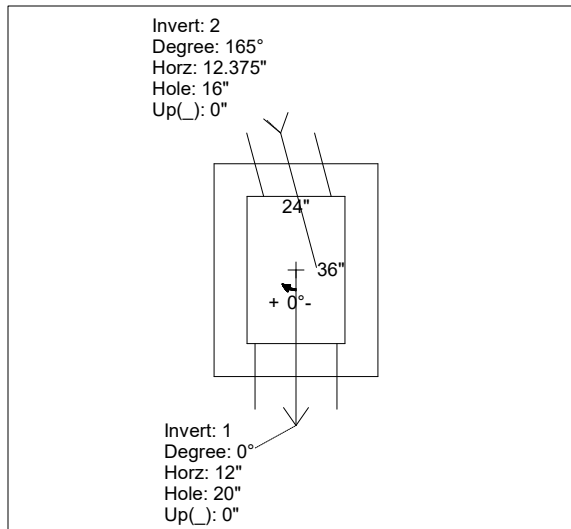
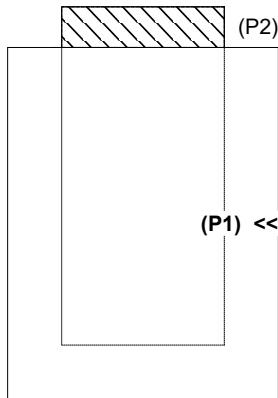
REINFORCING PER ASTM A615 (GRADE 60).  
 - WALLS (As .12) #5 BARS AT 12" C.C.E.W.  
 - FLOOR (As .12) #5 BARS AT 12" C.C.E.W.

Rim: 872.85' Rim to Invert: 4.1' Slack: 0.45" Sump: 1.25" Step Position:

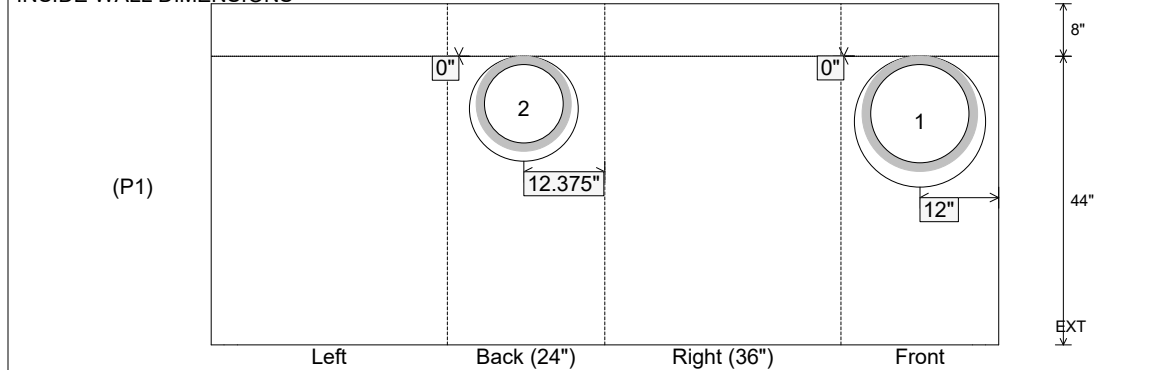
Position	Elev	Angle	Ext. (cw)	Pipe	Pipe OD	Connector	Hole	Horz Size	Up ( )	Offset
Invert 1	868.75'	0°	20"	15" HDPE	17.6"	Hole 20	20"	20"	0"	0"
Invert 2	868.75'	165°	18.25"	12" HDPE	14.5"	Hole 16	16"	16.564"	0"	5"
Invert 3										
Invert 4										
Invert 5										
Invert 6										
Invert 7										
Invert 8										

RIGHT-SIDE UP VIEW (int. dimensions)

UPSIDE-DOWN VIEW (int. dimensions)



INSIDE WALL DIMENSIONS



Coating (Int):  
 Coating (Ext):

Seam Up: Flat  
 Seam Dn: n/a

Wall Thickness: 8"  
 Floor Height: 8"

Height (Int): 44"  
 Height (Ext): 52"

Weight (Net): 5535 lb  
 Volume (Net): 1.41cu.yd