

Job Name: 26-1763 - MSU Commons Vault
 Job Location: Murray, KY
 Contractor: West Kentucky Industrial & Plumbing

Plant: 100
 5/22/2026 5:04:04 PM

Tech: Jared - F
 PC: T. Lewis



Structure ID: QL2 MV

P2 BX048108-08LD08S

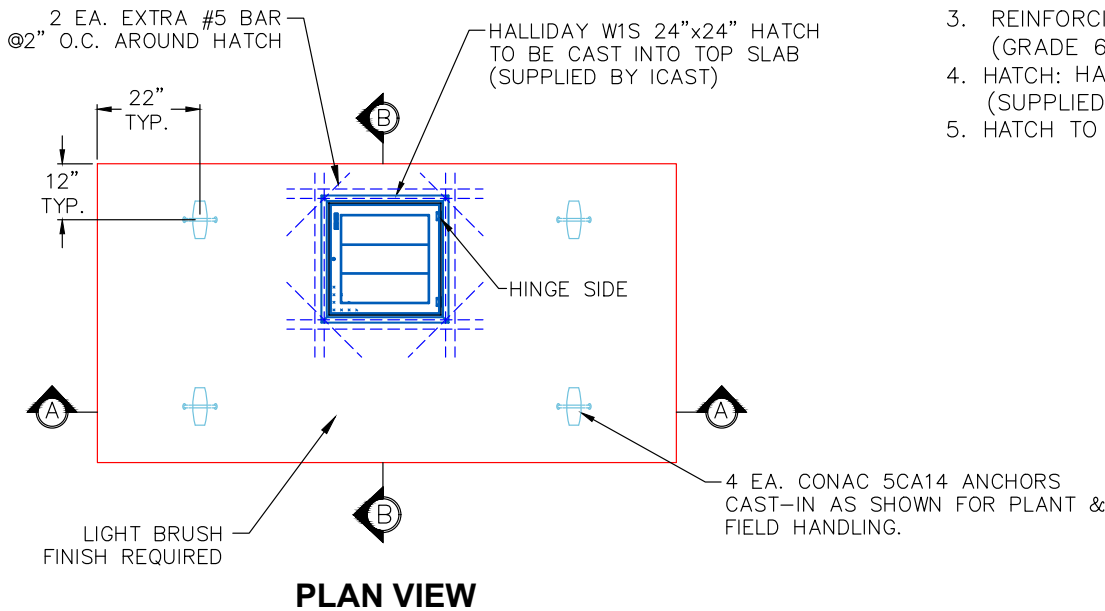
BX FLAT TOP 8"W w/24"x24" HATCH F/F

- P3) 24" x 24" - HATCH (CAST FLUSH) - 3"
- P2) 48" x 108" - BX FLAT TOP 8"W w/24"x24" HATCH - 8"
- P1) 48" x 108" - BOX BASE 8inW, 8inF, Variable Ht - 72"
- 1) JOINT WRAP - 0.065"x6"x50' CONSEAL CS212
- 1) JOINT WRAP PRIMER - CONSEAL CS-75 (1 gal.)
- 1) HATCH (Alum.) - HALLIDAY W1S 24"x24"
- 1) SECONDARY POUR - WALLS
- 1) 24" x 24" - Conseal CS-102 1.00" (Double)
- 2) Hole - 8

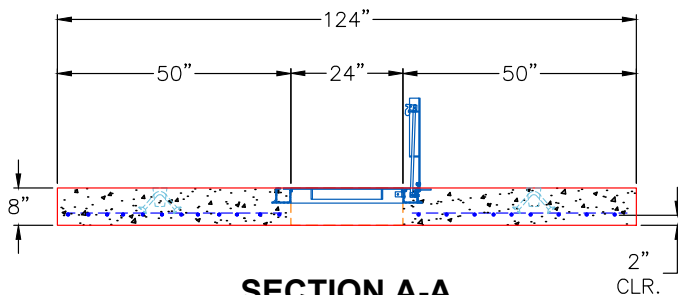
100 lb
 4941 lb
 21887 lb
 0 lb
 0 lb
 46 lb
 0 lb
 0 lb
 0 lb

Structure Total: 26973 lb

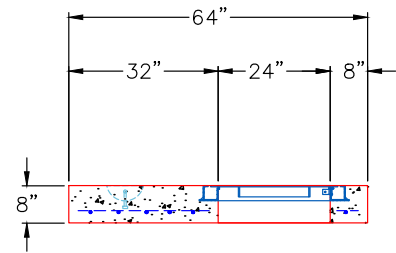
- Structure Notes:**
1. PER ASTM C913 SPECIFICATIONS.
 2. CONCRETE = 4,000 PSI AT 28 DAYS.
 3. HATCH PROVIDED BY ICAST (HALLIDAY W1S 24"x24")
 - REINFORCING PER ASTM A615 (GRADE 60).
 - TOP SLAB #5 BAR @ 6" C.C.E.W.
 - WALLS #5 BAR @ 12" C.C.E.W.
 - FLOOR #5 BAR @ 12" C.C.E.W.



- GENERAL NOTES:**
1. MANUFACTURED TO ASTM C-913 (LATEST REVISION).
 2. CONCRETE: 4,000 PSI AT 28 DAYS.
 3. REINFORCING: #5 BAR @ 6" E.W. O.C. (GRADE 60).
 4. HATCH: HALLIDAY W1S 24"x24" HATCH (SUPPLIED BY ICAST)
 5. HATCH TO BE CAST INTO TOP OF LID.



SECTION A-A
 (RIGHT SIDE-UP VIEW)



SECTION B-B
 (RIGHT SIDE-UP VIEW)

Coating (Int):
 Coating (Ext):

Seam Up: Flat
 Seam Dn: Flat

Wall Thickness: 8"

Height (Ext): 8"

Weight (Net): 4941 lb
 Volume (Net): 1.26cu.yd