

Job Name: 26-1230 - Wheelwright WWTP & LS Improvements
 Job Location: Wheelwright, KY
 Contractor: Endesol, Inc.

Plant: 100

5/7/2026 6:25:32 PM

Tech: Jared - F

PC: E. Bradley



Structure ID: 6

P1 BX3072-06BAVF

BOX BASE 6inW, 6inF, Variable Ht F/n

- P1) 30" x 72" - BOX BASE 6inW, 6inF, Variable Ht - 24"
- 1) SECONDARY POUR - WALLS
- 1) SECONDARY POUR - INTERNAL WALL
- 2) Hole - 12

4417 lb
 0 lb
 0 lb
 0 lb

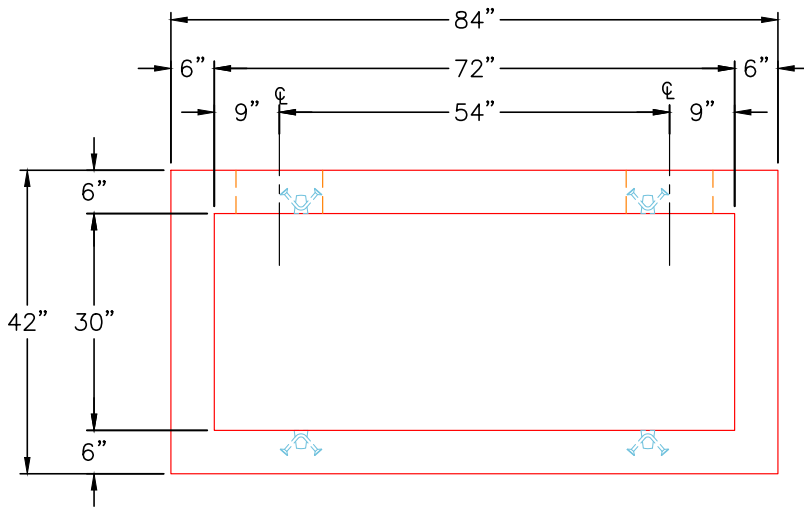
 Structure Total: 4417 lb

Structure Notes:

- 1. PER ASTM C913 SPECIFICATIONS.
- 2. CONCRETE = 4,000 PSI AT 28 DAYS.

REINFORCING PER ASTM A615 (GRADE 60).
 - WALLS (As .12) #4 BARS AT 12" C.C.E.W. (DOUBLE MAT)
 - FLOOR (As .12) #4 BARS AT 12" C.C.E.W. (DOUBLE MAT)

Rim: 2' Rim to Invert: 2' Slack: 0" Sump: 2" Step Position:

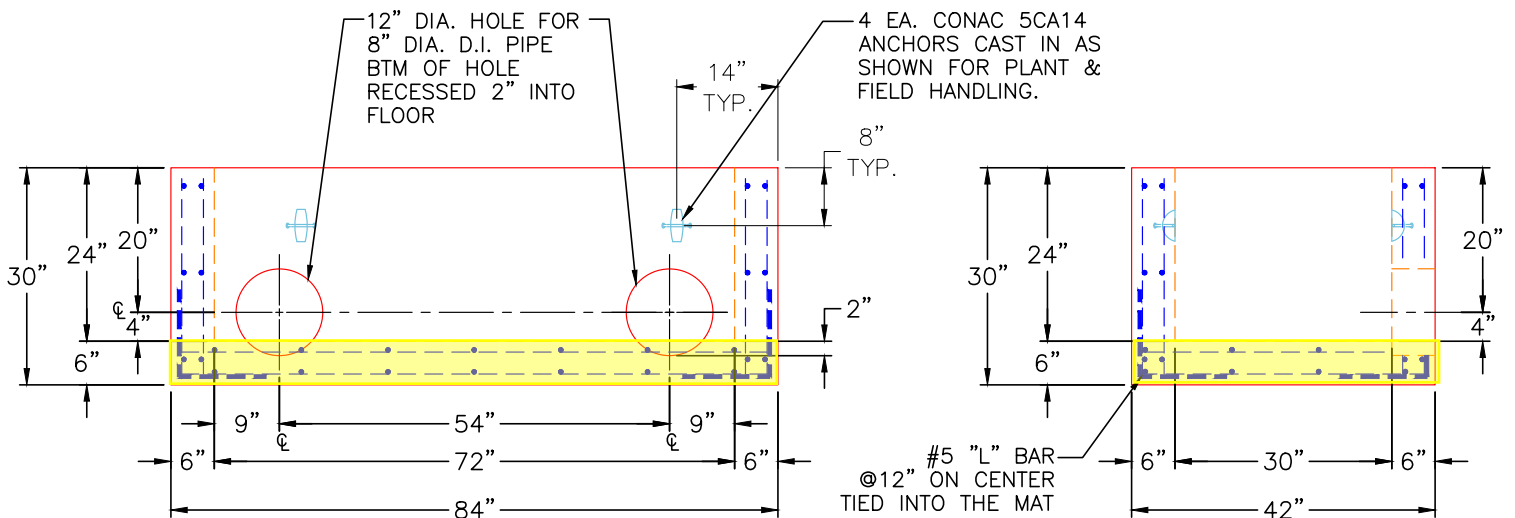


PLAN VIEW

GENERAL NOTES:

- 1. MANUFACTURED TO ASTM C-913 (LATEST REVISION).
- 2. CONCRETE: 4,000 PSI AT 28 DAYS.
- 3. REINFORCING: #4 BAR @ 12" E.W. O.C. DOUBLE MAT (GRADE 60).
- 4. WEIGHT:
 FIRST POUR - 1,763 LBS.
 SECOND POUR - 2,653 LBS.
 THIRD POUR - 821 LBS.
 TOTAL - 5,237 LBS.

FIRST POUR DRAWING



FRONT VIEW

RIGHT VIEW

Coating (Int):
 Coating (Ext):

Seam Up: Flat
 Seam Dn: n/a

Wall Thickness: 6"
 Floor Height: 6"

Height (Int): 26"
 Height (Ext): 32"

Weight (Net): 4647 lb
 Volume (Net): 1.19cu.yd

Job Name: 26-1230 - Wheelwright WWTP & LS Improvements
 Job Location: Wheelwright, KY
 Contractor: Endesol, Inc.

Plant: 100

5/7/2026 6:25:32 PM

Tech: Jared - F

PC: E. Bradley



Structure ID: 6

P1 BX3072-06BAVF

BOX BASE 6inW, 6inF, Variable Ht F/n

- P1) 30" x 72" - BOX BASE 6inW, 6inF, Variable Ht - 24"
- 1) SECONDARY POUR - WALLS
- 1) SECONDARY POUR - INTERNAL WALL
- 2) Hole - 12

4417 lb
 0 lb
 0 lb
 0 lb

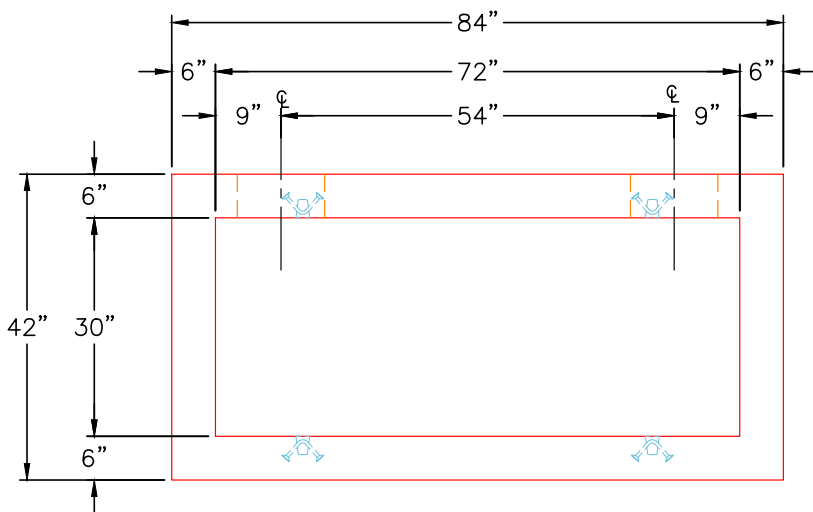
 Structure Total: 4417 lb

Structure Notes:

- 1. PER ASTM C913 SPECIFICATIONS.
- 2. CONCRETE = 4,000 PSI AT 28 DAYS.

REINFORCING PER ASTM A615 (GRADE 60).
 - WALLS (As .12) #4 BARS AT 12" C.C.E.W. (DOUBLE MAT)
 - FLOOR (As .12) #4 BARS AT 12" C.C.E.W. (DOUBLE MAT)

Rim: 2' Rim to Invert: 2' Slack: 0" Sump: 2" Step Position:

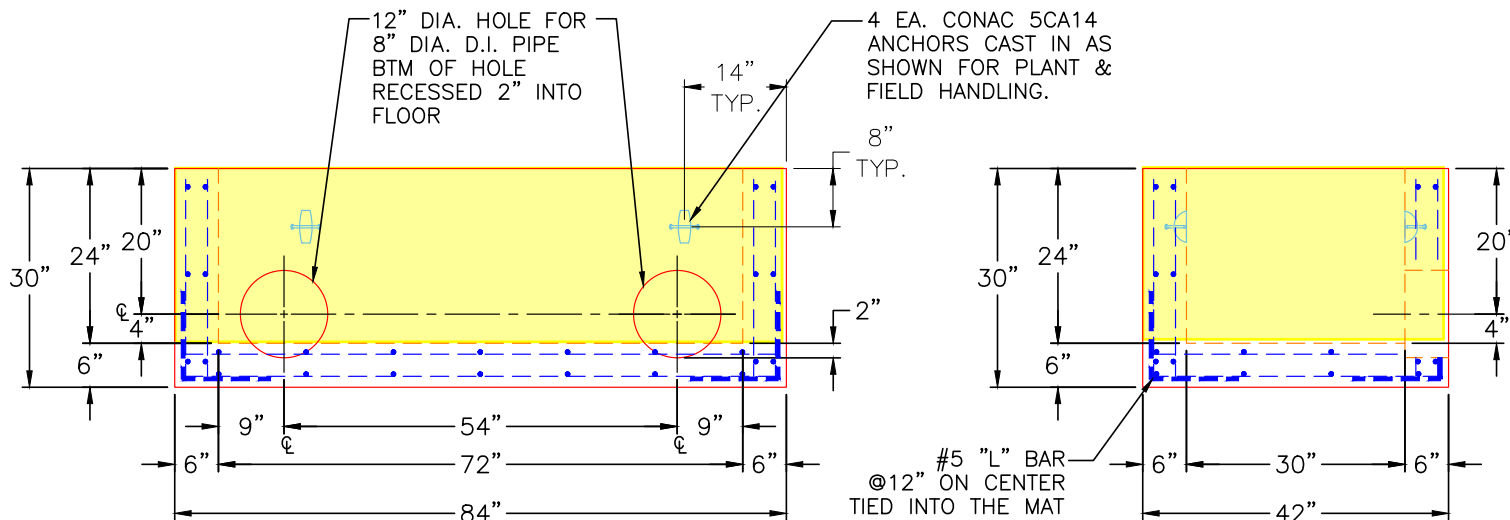


PLAN VIEW

GENERAL NOTES:

- 1. MANUFACTURED TO ASTM C-913 (LATEST REVISION).
- 2. CONCRETE: 4,000 PSI AT 28 DAYS.
- 3. REINFORCING: #4 BAR @ 12" E.W. O.C. DOUBLE MAT (GRADE 60).
- 4. WEIGHT:
 FIRST POUR - 1,763 LBS.
 SECOND POUR - 2,653 LBS.
 THIRD POUR - 821 LBS.
 TOTAL - 5,237 LBS.

SECOND POUR DRAWING



FRONT VIEW

RIGHT VIEW

Coating (Int):
 Coating (Ext):

Seam Up: Flat
 Seam Dn: n/a

Wall Thickness: 6"
 Floor Height: 6"

Height (Int): 26"
 Height (Ext): 32"

Weight (Net): 4647 lb
 Volume (Net): 1.19cu.yd

Job Name: 26-1230 - Wheelwright WWTP & LS Improvements
 Job Location: Wheelwright, KY
 Contractor: Endesol, Inc.

Plant: 100

5/7/2026 6:25:32 PM

Tech: Jared - F

PC: E. Bradley



Structure ID: 6

P1 BX3072-06BAVF

BOX BASE 6inW, 6inF, Variable Ht F/n

- P1) 30" x 72" - BOX BASE 6inW, 6inF, Variable Ht - 24"
- 1) SECONDARY POUR - WALLS
- 1) SECONDARY POUR - INTERNAL WALL
- 2) Hole - 12

4417 lb
 0 lb
 0 lb
 0 lb

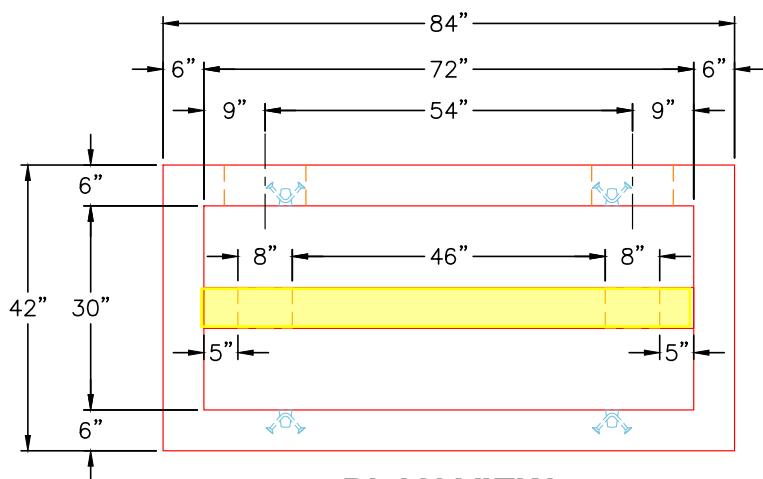
 Structure Total: 4417 lb

Structure Notes:

- 1. PER ASTM C913 SPECIFICATIONS.
- 2. CONCRETE = 4,000 PSI AT 28 DAYS.

REINFORCING PER ASTM A615 (GRADE 60).
 - WALLS (As .12) #4 BARS AT 12" C.C.E.W. (DOUBLE MAT)
 - FLOOR (As .12) #4 BARS AT 12" C.C.E.W. (DOUBLE MAT)

Rim: 2' Rim to Invert: 2' Slack: 0" Sump: 2" Step Position:

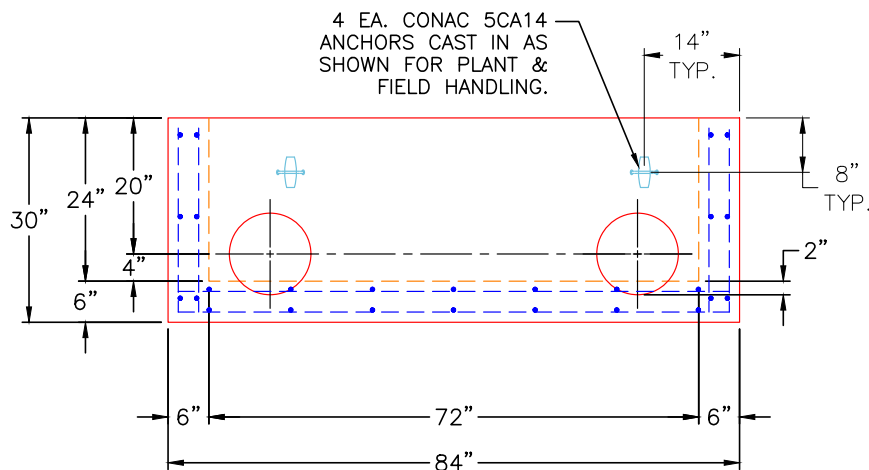


PLAN VIEW

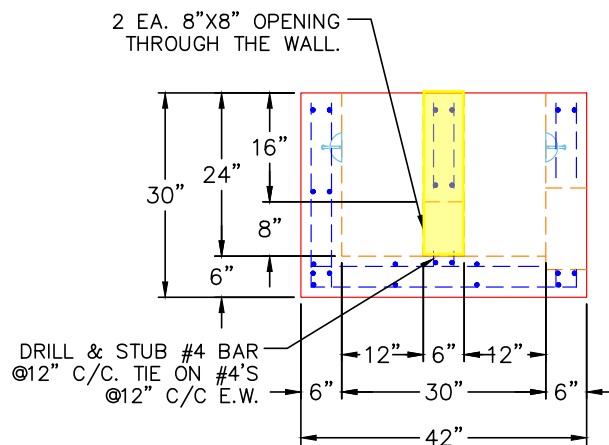
GENERAL NOTES:

- 1. MANUFACTURED TO ASTM C-913 (LATEST REVISION).
- 2. CONCRETE: 4,000 PSI AT 28 DAYS.
- 3. REINFORCING: #4 BAR @ 12" E.W. O.C. DOUBLE MAT (GRADE 60).
- 4. WEIGHT:
 FIRST POUR - 1,763 LBS.
 SECOND POUR - 2,653 LBS.
 THIRD POUR - 821 LBS.
 TOTAL - 5,237 LBS.

THIRD POUR DRAWING



FRONT VIEW



RIGHT VIEW

Coating (Int):
 Coating (Ext):

Seam Up: Flat
 Seam Dn: n/a

Wall Thickness: 6"
 Floor Height: 6"

Height (Int): 26"
 Height (Ext): 32"

Weight (Net): 4647 lb
 Volume (Net): 1.19cu.yd