

Job Name: 26-1227 - Project Colt
 Job Location: Evansville, IN
 Contractor: Russell's Excavating

Plant: 100
 5/12/2026 11:30:55 AM

Tech: Jared - F
 PC: A. Chambers



Structure ID: 103-13 MHJ

P2 MH060LD08

MH FLAT LID w/24in ECC Hole F/F

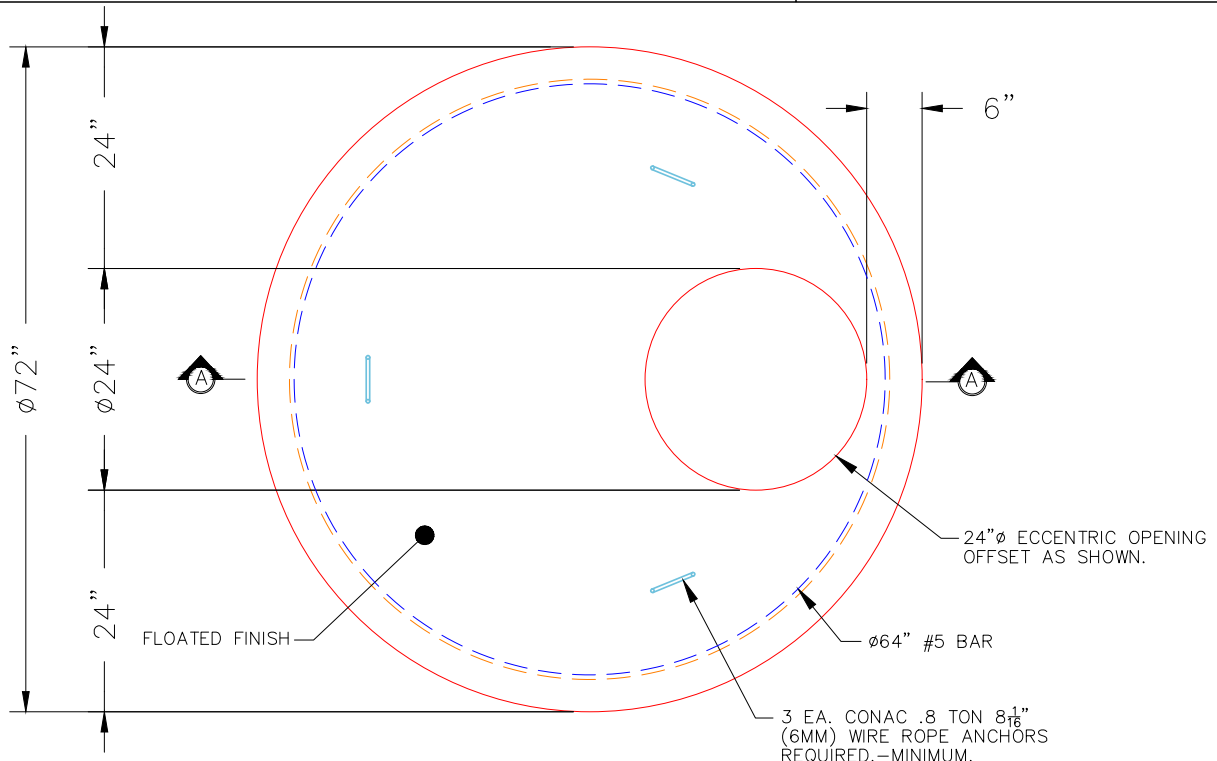
- P3) 24" - CASTING HEIGHT - 1"
- P2) 60" - MH FLAT LID w/24in ECC Hole F/F - 8"
- P1) 60" - MH BASE Custom Ht F/n - 61"
- 1) EJ 6489 GRATE
- 1) 60" - Conseal CS-102 1.00"
- 2) Hole - 44
- 2) Hole - 6
- 5) MH Step ML-10-TDS-NCR - 10"

0 lb
 2429 lb
 7390 lb
 0 lb
 0 lb
 0 lb
 0 lb
 0 lb

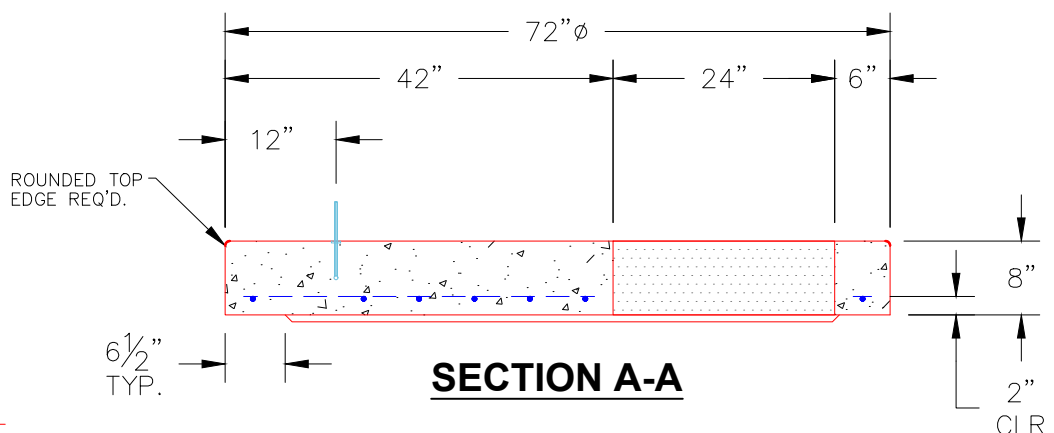
 Structure Total: 9819 lb

Structure Notes:
 1. INDOT MH TYPE J / ASTM C478 SPEC'S.
 2. CONCRETE = 4,000 PSI AT 28 DAYS.
 3. NO INVERT CHANNEL.
 4. CASTING BY ICAST (EJ 6489 GRATE).

 REINFORCING PER ASTM A615 (GRADE 60).
 - TOP SLAB (As .62) #5 BARS AT 6" C.C.E.W..
 - RISER/WALLS (As .12)
 - FLOOR (As .62) #5 BARS AT 6" C.C.E.W.



PLAN VIEW



SECTION A-A

- NOTES:**
1. MANUFACTURED TO ASTM C-478 (LATEST REVISION).
 2. CONCRETE: 4,000 PSI AT 28 DAYS.
 3. REINFORCING: #5 BAR @ 6" O.C. E.W. (GRADE 60).

Coating (Int): Coating (Ext):	Seam Up: Flat Seam Dn: Flat	Wall Thickness: 6"	Height (Ext): 8"	Weight (Net): 2429 lb Volume (Net): 0.62cu.yd
----------------------------------	--------------------------------	--------------------	------------------	--