

Job Name: 26-1699 - ECTC Culinary Kitchen
 Job Location: Elizabethtown, KY
 Contractor: Advanced Mechanical LLC

Plant: 100

5/20/2026 11:09:08 AM

Tech: Jared - A

PC: M. Sullivan



Structure ID: 1 GT2500

P2 BX072144-08LD06S

CB FLAT TOP 6"W w/(2) 24" HOLES (Grease Trap) F/F

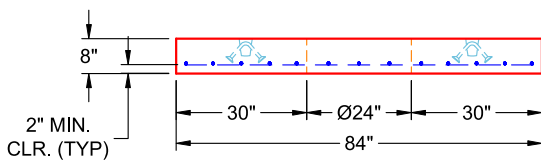
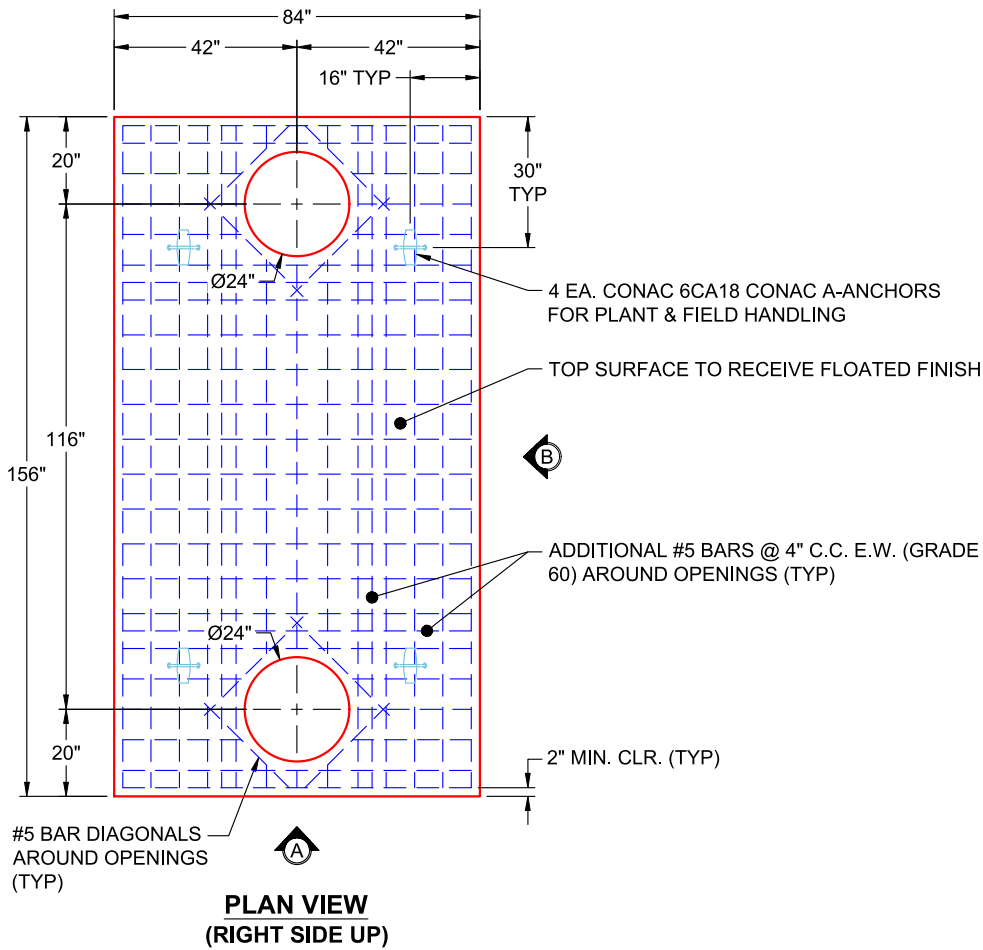
- P3) 24" - CASTING HEIGHT - 7"
- P2) 72" x 144" - CB FLAT TOP 6"W w/(2) 24" HOLES (Grease Trap) F/F - 8"
- P1) 72" x 144" - BOX BASE 6inW, 6inF, Variable Ht F/n - 72"
- 1) SECONDARY POUR - Base Walls
- 1) SECONDARY POUR - 6" Thick Baffle Wall
- 2) CASTING - HOE MC-375 F/C Grease
- 1) 72" x 144" - Conseal CS-102 1.00" (Double)
- 1) 24" - Conseal CS-102 1.00" (Double)
- 2) PSX - 16M NYLO

0 lb
 8190 lb
 22925 lb
 0 lb
 2481 lb
 542 lb
 0 lb
 0 lb
 16 lb

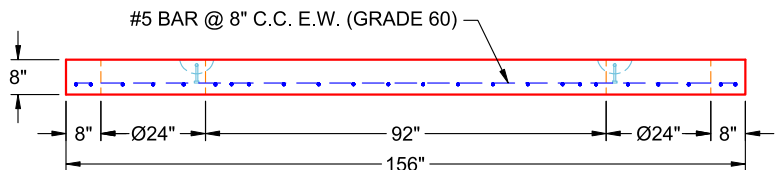
 Structure Total: 34154 lb

Structure Notes:

1. PER ASTM C-890-13 SPECIFICATIONS
2. CONCRETE: 4,500 PSI AT 28 DAYS
3. REINFORCEMENT: #5 BAR @ 8" C.C. E.W. (GRADE 60) - 2" MIN. REBAR CLEARANCE (TYP)
4. 2 EA. HOE MC-375 FRAMES & COVERS "GREASE" SUPPLIED BY ICAST
5. LIFTERS: 4 EA. 6CA18 CONAC A-ANCHORS FOR PLANT & FIELD HANDLING - INSTALLED AS SHOWN
6. TOP SURFACE TO RECEIVE FLOATED FINISH



**VIEW A
(RIGHT SIDE UP)**



**VIEW B
(RIGHT SIDE UP)**

Coating (Int):
 Coating (Ext):

Seam Up: Flat
 Seam Dn: Flat

Wall Thickness: 6"

Height (Ext): 8"

Weight (Net): 8190 lb
 Volume (Net): 2.09cu.yd