

Job Name: 26-1227 - Project Colt  
 Job Location: Evansville, IN  
 Contractor: Russell's Excavating

Plant: 100  
 5/12/2026 11:30:54 AM

Tech: Jared - F  
 PC: A. Chambers



**Structure ID: 102-12 MHJ**

**P2 MH060TS15-48ECC**

**MH Transition Slab 48" Hole T/G**

- P5) 24" - CASTING HEIGHT - 8"
- P4) 48" - MH FLAT LID w/24in ECC Hole F/G - 12"
- P3) 48" - MH RISER T/G - 72"
- P2) 60" - MH Transition Slab 48" Hole T/G - 15"
- P1) 60" - MH BASE T/n - 66"
- 1) HOE R-3472 INDOT Type 2 Frame & Grate
- 1) 60" - Conseal CS-102 1.00"
- 2) 48" - Conseal CS-102 1.00"
- 2) Hole - 44
- 2) Hole - 6
- 11) MH Step ML-10-TDS-NCR - 10"

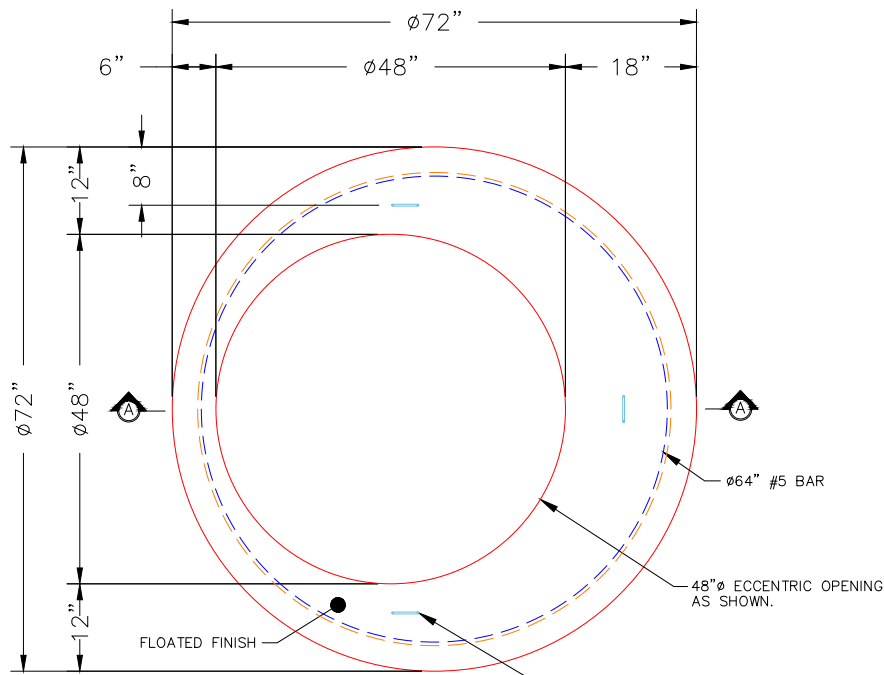
0 lb  
 1561 lb  
 5006 lb  
 2204 lb  
 7940 lb  
 250 lb  
 0 lb  
 0 lb  
 0 lb  
 0 lb  
 0 lb  
 0 lb  
 -----  
 Structure Total: 16961 lb

**Structure Notes:**

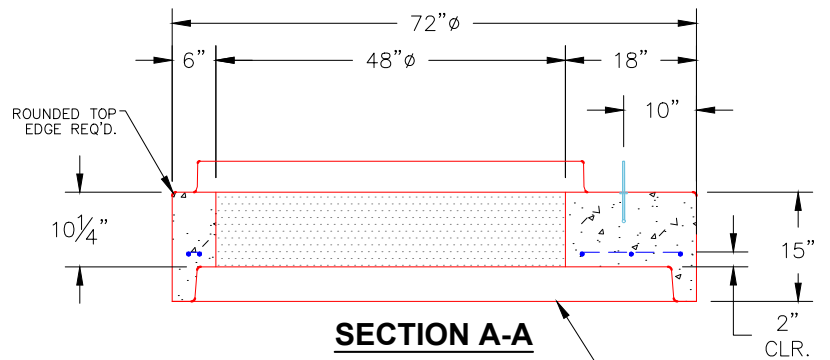
1. INDOT MH TYPE J / ASTM C478 SPEC'S.
2. CONCRETE = 4,000 PSI AT 28 DAYS.
3. NO INVERT CHANNEL.
4. CASTING BY ICAST (HOE R-3472 INDOT TYPE 2 FRAME & GRATE).

**REINFORCING PER ASTM A615 (GRADE 60).**

- TOP SLAB (As .62) #5 BARS AT 6" C.C.E.W..
- RISER/WALLS (As .12)
- TRANS. SLAB (As .62) #5 BARS AT 6" C.C.E.W..
- RISER/WALLS (As .18)
- FLOOR (As .62) #5 BARS AT 6" C.C.E.W.



**PLAN VIEW**



**SECTION A-A**

**NOTES:**

1. MANUFACTURED TO ASTM C-478 (LATEST REVISION).
2. CONCRETE: 4,000 PSI AT 28 DAYS.
3. REINFORCING: #5 BAR @ 6" O.C. E.W. (GRADE 60).

Coating (Int):  
 Coating (Ext):

Seam Up: Tongue  
 Seam Dn: Groove

Wall Thickness: 6"

Height (Ext): 15"

Weight (Net): 2204 lb  
 Volume (Net): 0.56cu.yd