

Job Name: 26-1582 - Wyelea Commons Water Vault
 Job Location: Franklin, TN
 Contractor: Core & Main LP

Plant: 100

5/1/2026 1:12:54 PM

Tech: Jared - A

PC: T. Lewis



Structure ID: 2 (3)

P1 BX7296-06W06F-BA42

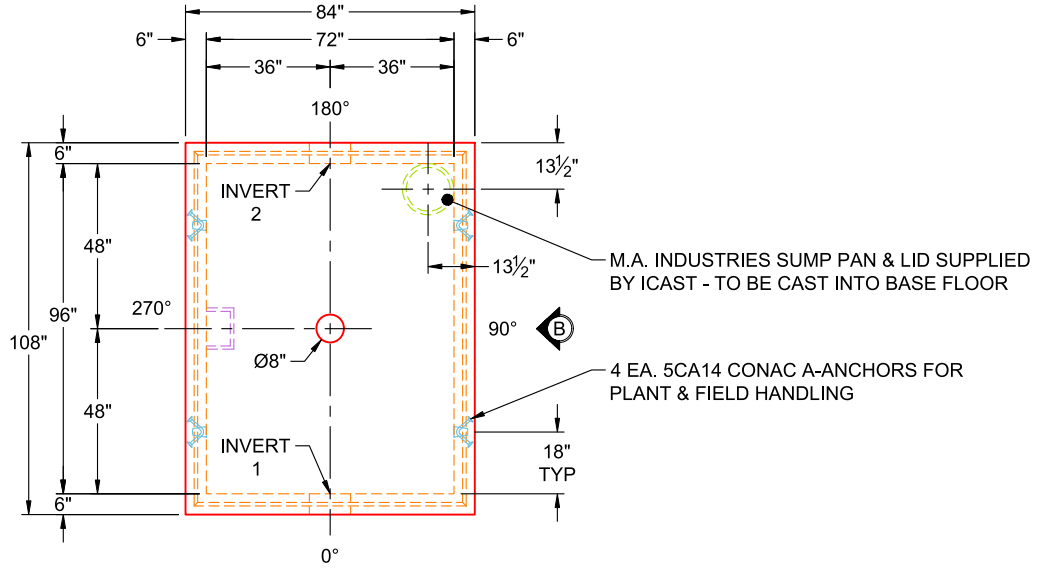
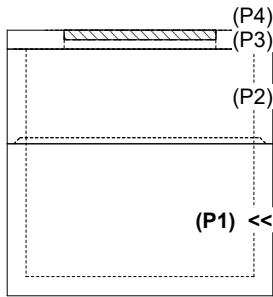
BOX BASE 6inW, 6inF T/n

P4) 48" x 72" - HATCH (CAST FLUSH) - 3"	0 lb
P3) 72" x 96" - CB FLAT TOP 6"W w/48"x72" HATCH F/F - 6"	3000 lb
P2) 72" x 96" - BOX RISER 6inW, Variable Ht FT F/G - 30"	5437 lb
P1) 72" x 96" - BOX BASE 6inW, 6inF T/n - 42"	12041 lb
1) This Structure Includes a Cast-in Item - 48" X 72" Hatch (Supplied by Others)	0 lb
1) This Structure Includes a Cast-in Item - M.A. Industries Sump Pan & Lid (Supplied by iCast)	0 lb
1) SUMP DISH - M.A. Industries Sump Pan & Lid	0 lb
2) 72" x 96" - Conseal CS-102 1.00" (Double)	0 lb
2) Hole - 12	0 lb
6) MH Step ML-10-TDS-NCR - 10"	0 lb
Structure Total:	20478 lb

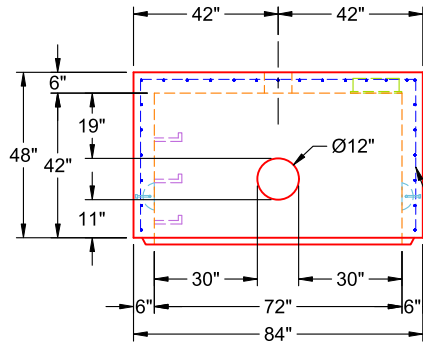
- Structure Notes:**
- PER ASTM C-913 SPECIFICATIONS
 - CONCRETE: 5,000 PSI AT 28 DAYS
 - REINFORCEMENT: #4 BAR @ 8" C.C. E.W. (GRADE 60) - 2" MIN. REBAR CLEARANCE (TYP)
 - STEPS AT 270 DEGREES
 - M.A. INDUSTRIES SUMP PAN & LID SUPPLIED BY ICAS - TO BE CAST INTO BASE FLOOR
 - 8" DIA. OPENING REQUIRED IN BASE FLOOR FOR 4" PVC FLOOR DRAIN
 - LIFTERS: 4 EA. 5CA14 CONAC A-ANCHORS FOR PLANT & FIELD HANDLING - INSTALLED AS SHOWN

Rim: 6.5' Rim to Invert: 4.75' Slack: 0" Sump: 21" Step Position: 270°

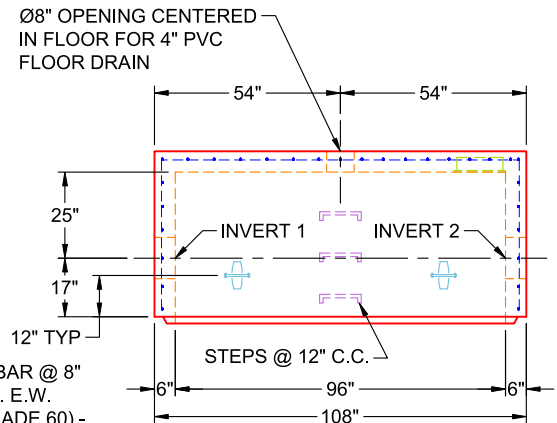
Position	Elev	Angle	Ext. (cw)	Pipe	Pipe OD	Connector	Hole	Horz Size	Up (L)	Offset
Invert 1	1.75'	0°	42"	8" DI	9"	Hole 12	12"	12"	19"	0"
Invert 2	1.75'	180°	42"	8" DI	9"	Hole 12	12"	12"	19"	0"
Invert 3										



PLAN VIEW (UPSIDE DOWN)



VIEW A (UPSIDE DOWN)



VIEW B (UPSIDE DOWN)

Coating (Int):
Coating (Ext):

Seam Up: Tongue
Seam Dn: n/a

Wall Thickness: 6"
Floor Height: 6"

Height (Int): 42"
Height (Ext): 48"

Weight (Net): 12041 lb
Volume (Net): 3.08cu.yd

Job Number:

26-1582

Job Name:

Wyelea Commons Water Vault

Structure:

2 (3)

Note:

M.A. Industries Sump Pan & Lid
Supplied By iCast To Be Cast Into
Base Floor